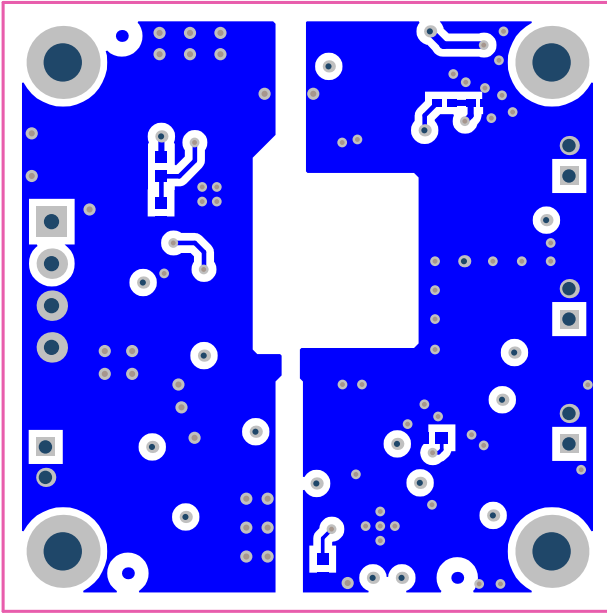
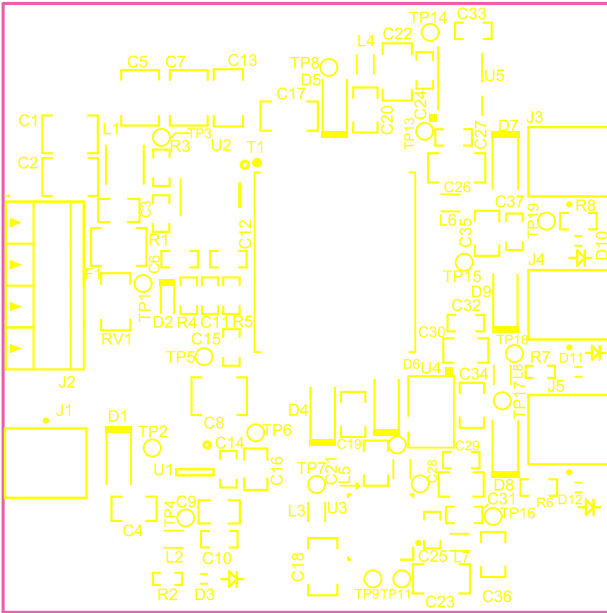


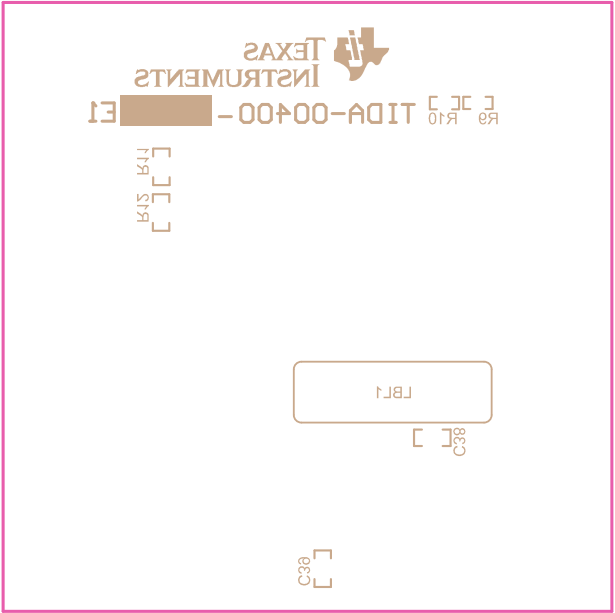
MopBlayerOutline



Bottom Layer



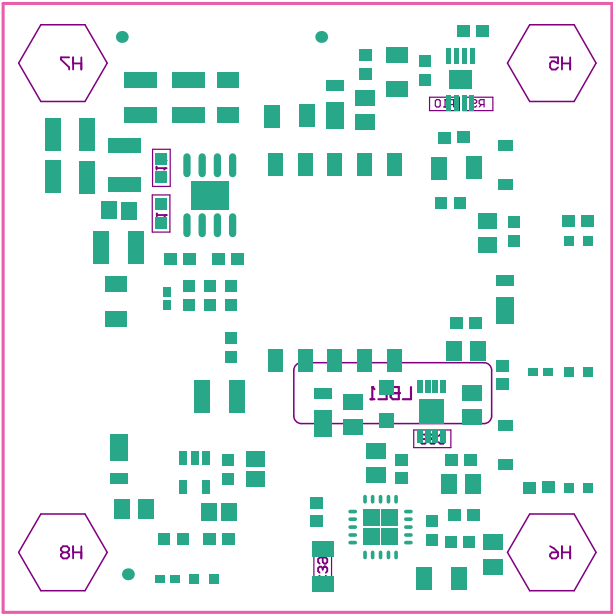
100MHz Board Outline

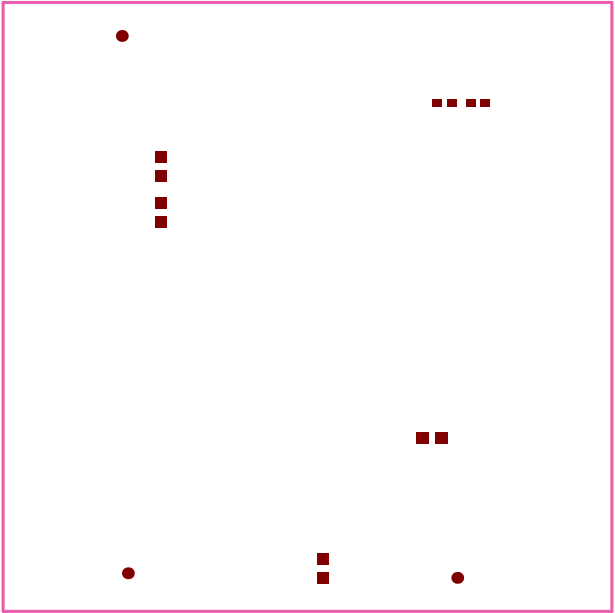


Get Board Outline

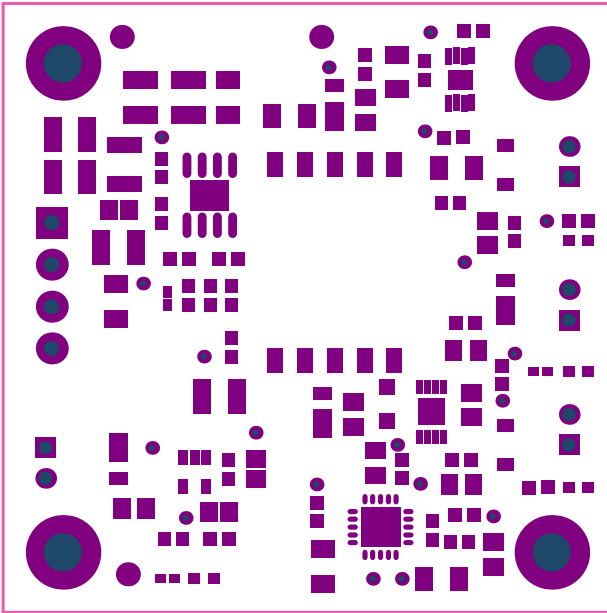
ASSEMBLY VARIANT: [No Variations]  
COMPONENTS MARKED 'DNP' SHOULD NOT BE POPULATED.

|                                  |  |                                       |  |            |                                |                   |
|----------------------------------|--|---------------------------------------|--|------------|--------------------------------|-------------------|
| PCB VIEWED FROM BOTTOM SIDE      |  | BOARD # : TIDA-00400                  |  | REV: E1    | SVN REV: Not In VersionControl |                   |
|                                  |  | IGNORE -> <div>Top PasteOutline</div> |  |            |                                |                   |
| PLOT NAME = Top Paste Mask Print |  | GENERATED : 3/10/2015                 |  | 2:10:00 PM |                                | TEXAS INSTRUMENTS |

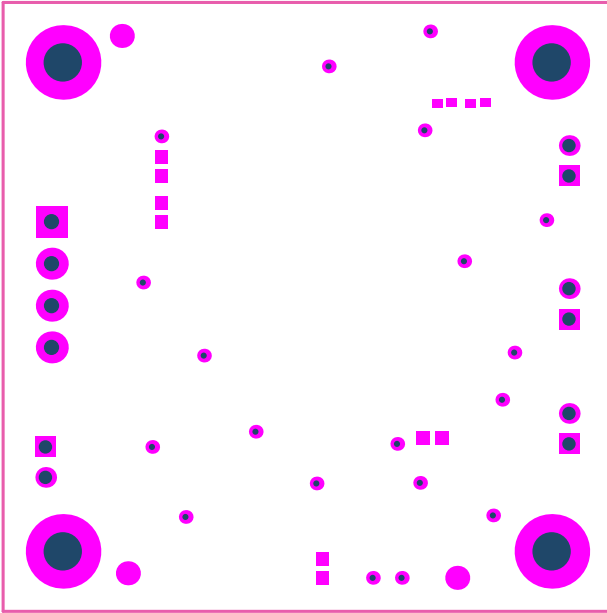




Bottom Paste line

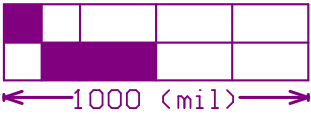
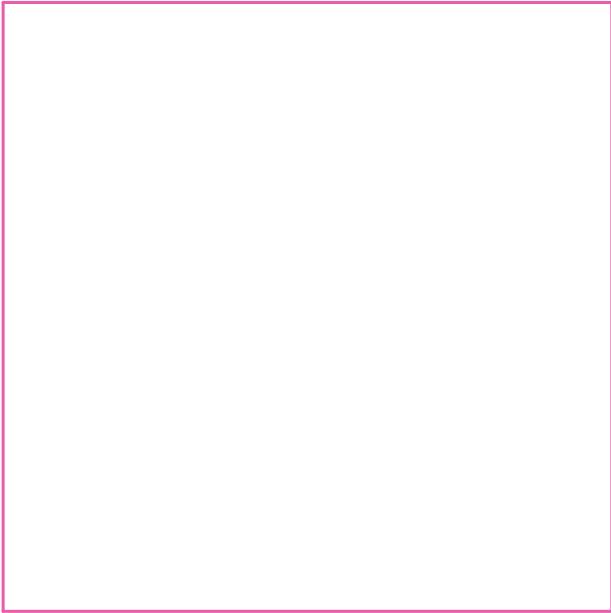


Top Side Outline



Hot Board Outline





M2 Board Dimensions

| Comment               | Description  | Designator  | Footprint          | LibRef               | Quantity |
|-----------------------|--|---|--------------------|----------------------|----------|
| Printed Circuit Board | Printed Circuit Board  | PCB1  |                    | PCB                  | 1        |
| GRM32ER7H106KAT2L     | Cap, CERAM, 100pF, +/-10%, X7R, 1210   | C1, C2  | 1210               | GRM32ER7H106KAT2L    | 2        |
| C0805C104K1RACTU      | Cap, CERAM, 0.1uF, 100V, +/-10%, X7R, 0805   | C3  | 0805               | C0805C104K1RACTU     | 1        |
| C2012ASR1TH75K125AB   | Cap, CERAM, 4.7uF, 50V, +/-10%, X5R, 0805  | C4, C30, C35, C36   | 0805_HV            | C2012ASR1TH75K125AB  | 4        |
| GRM32ER72A225KA35L    | Cap, CERAM, 2.2uF, 100V, +/-10%, X7R, 1210   | C5, C7  | 1210               | GRM32ER72A225KA35L   | 2        |
| GRM188R61H105KA0ALD   | Cap, CERAM, 100pF, 50V, +/-10%, X5R, 0603  | C6  | 0603               | GRM188R61H105KA0ALD  | 1        |
| GMK325AB7106MM-T      | Cap, CERAM, 100pF, 35V, +/-20%, X7R, 1210  | C8  | 1210               | GMK325AB7106MM-T     | 1        |
| 0805YD106MAT2A        | Cap, CERAM, 100pF, 16V, +/-20%, X5R, 0805  | C9  | 0805               | 0805YD106MAT2A       | 1        |
| C0603C104K5RACTU      | Cap, CERAM, 0.1uF, 50V, +/-10%, X7R, 0603  | C10, C14  | 0603               | C0603C104K5RACTU     | 2        |
| GRM188R72A104KA35D    | Cap, CERAM, 0.1uF, 100V, +/-10%, X7R, 0603   | C11   | 0603               | GRM188R72A104KA35D   | 1        |
| 06031C103JAT2A        | Cap, CERAM, 0.01uF, 100V, +/-5%, X7R, 0603   | C12, C27, C33   | 0603               | 06031C103JAT2A       | 3        |
| GRM31MR72A474KA35L    | Cap, CERAM, 0.47uF, 100V, +/-10%, X7R, 1206  | C13   | 1206               | GRM31MR72A474KA35L   | 1        |
| 06031C332JAT2A        | Cap, CERAM, 3300pF, 100V, +/-5%, X7R, 0603   | C15   | 0603               | 06031C332JAT2A       | 1        |
| 0805C105KAT2A         | Cap, CERAM, 10uF, 50V, +/-10%, X7R, 0805   | C16   | 0805               | 0805C105KAT2A        | 1        |
| 203R18W102KV4E        | Cap, CERAM, 10000pF, 2kV, 10%, X7R, 1206   | C17   | 1206               | 203R18W102KV4E       | 1        |
| GRM03CR71H75KA12L     | Cap, CERAM, 4.7uF, 50V, +/-10%, X7R, 1206  | C18   | 1206               | GRM03CR71H75KA12L    | 1        |
| GRM21BR71E225KA73L    | Cap, CERAM, 2.2uF, 25V, +/-10%, X7R, 0805  | C19, C20, C21   | 0805_HV            | GRM21BR71E225KA73L   | 3        |
| GRM31CR71E106KA12L    | Cap, CERAM, 100pF, 50V, +/-10%, X7R, 1206  | C22, C23, C26   | 1206               | GRM31CR71E106KA12L   | 3        |
| 06035C104KAT2A        | Cap, CERAM, 0.1uF, 50V, +/-10%, X7R, 0603  | C24, C25, C26, C31, C32, C37  | 0603               | 06035C104KAT2A       | 6        |
| GRM21BR61C226ME44     | Cap, CERAM, 2.2uF, 16V, +/-20%, X5R, 0805  | C28, C34  | 0805_HV            | GRM21BR61C226ME44    | 2        |
| 06031C102JAT2A        | Cap, CERAM, 1000pF, 100V, +/-5%, X7R, 0603   | C38   | 0603               | 06031C102JAT2A       | 1        |
| C1608K7R1E105K080AB   | Cap, CERAM, 1uF, 25V, +/-10%, X7R, 0603  | C39   | 0603               | C1608K7R1E105K080AB  | 1        |
| PTZTE255.6B           | DIODE, ZENER, 3.5W, 1W, PMDS, DIODE ZENER 5.9V 1W PMDS                               | D1, D9  | powerDI123         | PTZTE255.6B          | 2        |
| SDM10U45-7-F          | DIODE, Schottky, 45V, 0.1A, SOD-523  | D2  | SOD-523            | SDM10U45-7-F         | 1        |
| LED_LU_L29K4321-24-Z  | LED, SMD, Green, 570NM   | D3, D10, D11, D12   | LED0603AA          | LED_LU_L29K4321-24-Z | 4        |
| DFLS1200-7            | DIODE, Schottky, 200V, 1A, PowerDI123  | D4, D5  | powerDI123         | DFLS1200-7           | 2        |
| PMEG6010CEH,115       | DIODE, Schottky, 60V, 1A, SOD-123F   | D6  | SOD-123F           | PMEG6010CEH,115      | 1        |
| DZ2W18000L            | DIODE, Zener, 18V, 1W, SOD-123   | D7, D8  | SOD-123            | DZ2W18000L           | 2        |
| OZC80020PF2E          | PIEZO, CREST, 100V, 0.2A, 60V CHIP, 1210   | F1  | 1210               | 37215000001          | 1        |
| Fiducial              | Fiducial mark. There is nothing to buy or mount.                                     | FID1, FID2, FID3, FID4, FID5, FID6  | Fiducial10-20      | Fiducial             | 6        |
| NY PMS 440 0025 PH    | Master Series, Round, #4-40 x 1/4, Nylon, Philips panhead                            | H1, H2, H3, H4  | NY PMS 440 0025 PH | NY PMS 440 0025 PH   | 4        |
| 1902C                 | TERMINAL BLOCK, 2x1, 40 Nylon  | H5, H6, H7, H8  | Keystone_1902C     | 1902C                | 4        |
| 282834-2              | TERMINAL BLOCK, 2x1, 2.54mm, TH  | J1, J3, J4, J5  | TEC_282834-2       | 282834-2             | 4        |
| ED565/4DS             | TERMINAL BLOCK, 6x3, 5.5mm Pitch, 4-Pin, TH  | J2  | TERM_BLK_ED565-4DS | ED565/4DS            | 1        |
| 3.3uH                 | Inductor, Chip, +/-10%   | L1  | IND_B8242H         | IND_ELUEA_SERIES     | 1        |
| 1000 OHM              | TERMINAL BLOCK, 1000 OHM 300MA 0603  | L2, L3, L4, L5, L6, L7, L8  | FB0603             | MMZ1608B102C         | 7        |
| Size: 0.65" x 0.20"   | Printer's marks: Printable Labels, 0.650" W x 0.200" H - 10,000 per roll             | LBL1  | Label_650x200      | THT-14-423-10        | 1        |
| RC0603FR-0727KL       | RES, 27.0k OHM, 1%, 0.1W, 0603   | R1  | 0603               | RC0603FR-0727KL      | 1        |
| CRCW04021K20JNED      | RES, 1.2k OHM, 5%, 0.063W, 0402  | R2, R7  | 0402               | CRCW04021K20JNED     | 2        |
| CRCW0603100KFKEA      | RES, 100k OHM, 1%, 0.1W, 0603  | R3  | 0603               | CRCW0603100KFKEA     | 1        |
| CRCW0603187KFKEA      | RES, 187k OHM, 1%, 0.1W, 0603  | R4  | 0603               | CRCW0603187KFKEA     | 1        |
| RT0603BRD0756K2L      | RES, 362k OHM, 0.1%, 0.1W, 0603  | R5  | 0603               | RT0603BRD0756K2L     | 1        |
| CRCW06034K70JNEA      | RES, 4.7k OHM, 5%, 0.1W, 0603  | R6, R8  | 0603               | CRCW06034K70JNEA     | 2        |
| TNPW04029K42BEED      | RES, 9.42k OHM, 1%, 0.063W, 0402   | R9  | 0402               | CRCW04029K31FKED     | 1        |
| CRCW0402110KFKEA      | RES, 110k OHM, 1%, 0.063W, 0402  | R10   | 0402               | CRCW0402110KFKEA     | 1        |
| RT0603BRD0760K4L      | RES, 362k OHM, 0.1%, 0.1W, 0603  | R11   | 0603               | RT0603BRD0760K4L     | 1        |
| RC0603FR-074K87L      | RES, 4.87k OHM, 1%, 0.1W, 0603   | R12   | 0603               | RC0603FR-074K87L     | 1        |
| VC1065030A650DP       | VARIABLE RES, 36.9V, 30A, 0805   | RV1   | 1206               | VC120648D101DP       | 1        |
| 750342178             | Transformer, 50uH, SMT   | T1  | WURTH_750313995    | 750313995            | 1        |
| TP1_PD40_D0.5_S50     | Test Point 40mil pad 20mil drill   | TP1, TP2, TP3, TP4, TP5, TP6, TP7, TP8, TP9, TP10, TP11, TP12, TP13, TP14, TP15, TP17 | TP1_PD40_D0.5_S50  | TP-040_RND           | 16       |
| TP-038                | Test Point 40mil pad 20mil drill   | TP16, TP18, TP19  | TP1_PD40_D0.5_S50  | TP-038               | 3        |
| TPS70933DBVT          | IC, REG, LDO, 3.3V, 0.15A, SOT23-5   | U1  | DBV0005A_N         | TPS70933DBVT         | 1        |
| LM5017MRE/NOPB        | 100V, 800mA Constant On-Time Synchronous Buck Regulator, DDA00008B                   | U2  | DDA00008_N         | LM5017MRE/NOPB       | 1        |
| TPS7A4700RGW          | 36V, 1mA, 1.7V, 100mA, RF LDO Voltage Regulator, RGW0020A                            | U3  | RGW0020A           | TPS7A4700RGW         | 1        |
| TPS7A1650DGNR         | IC, 60-V, 6-A IQ, 100-mA, LDO Voltage Regulator with Enable and Power-Good Functions | U4  | DGN_8P             | TPS7A16X0DGN         | 1        |
| TPS7A3001DGNR         | -36V, -200mA, Ultralow Noise   | U5  | MSOP8(DGN)         | TPS7A3001DGNR        | 1        |