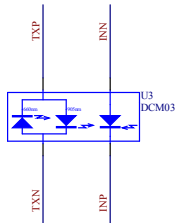
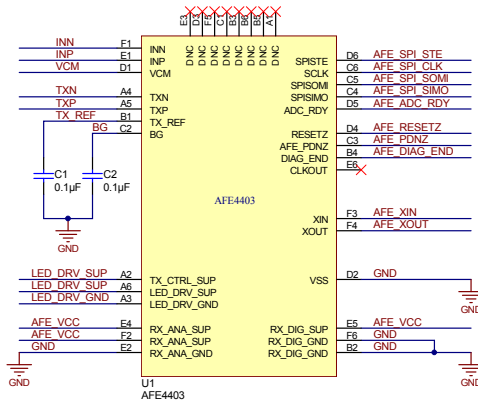


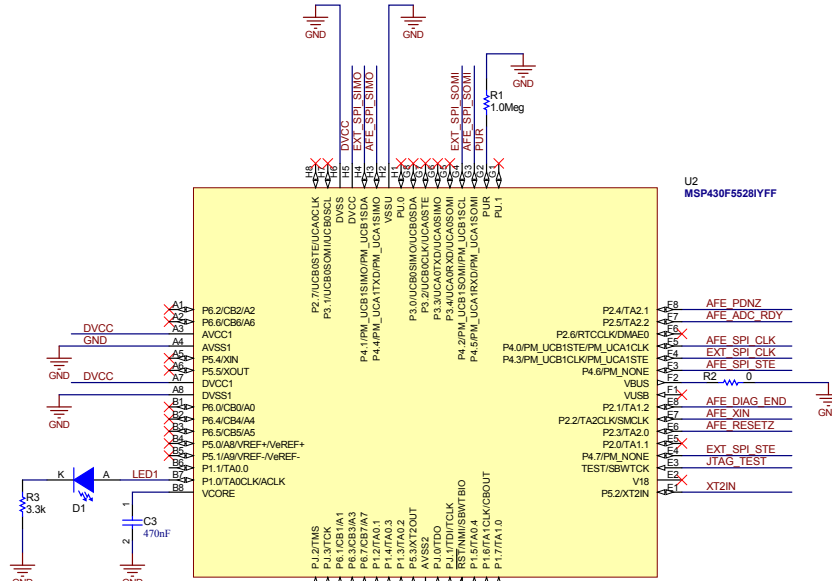
DCM03 Sensor



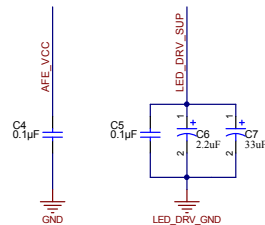
AFE4403



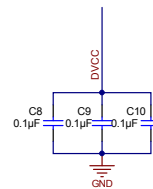
MSP430F5528



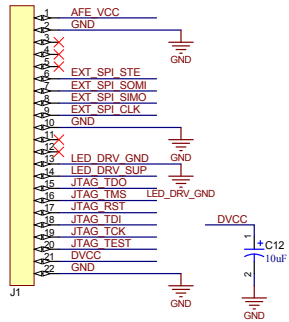
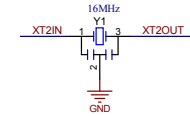
U2  
MSP430F5528IYFF



Decoupling Caps  
Close to AFE



Decoupling Caps  
Close to MSP430



Texas Instruments and/or its licensors do not warrant the accuracy or completeness of this specification or any information contained therein. Texas Instruments and/or its licensors do not warrant that this design will meet the specifications, or will operate in an implementation. Texas Instruments and/or its licensors do not warrant that the design is production worthy. You should completely validate and test your design implementation to confirm the system functionality for your application.

|                                      |  |  |                       |
|--------------------------------------|--|--|-----------------------|
| Number: XX###                        | Rev: E1  | Designed for: Public Release                             | Mod. Date: 11/25/2013 |
| SVN Rev: Not in version control      | Assembly Variant: Variant name not interpreted | Project Title: Change in menu Project/Options/Parameters | Sheet: 1 of 1         |
| Drawn By: Enter name of project lead | File: DCM03 AFE4403 MCU SchDoc                 | Contact: http://www.ti.com/support                       | Size: B               |
| Engineer: Enter name of project lead |  |  |                       |

