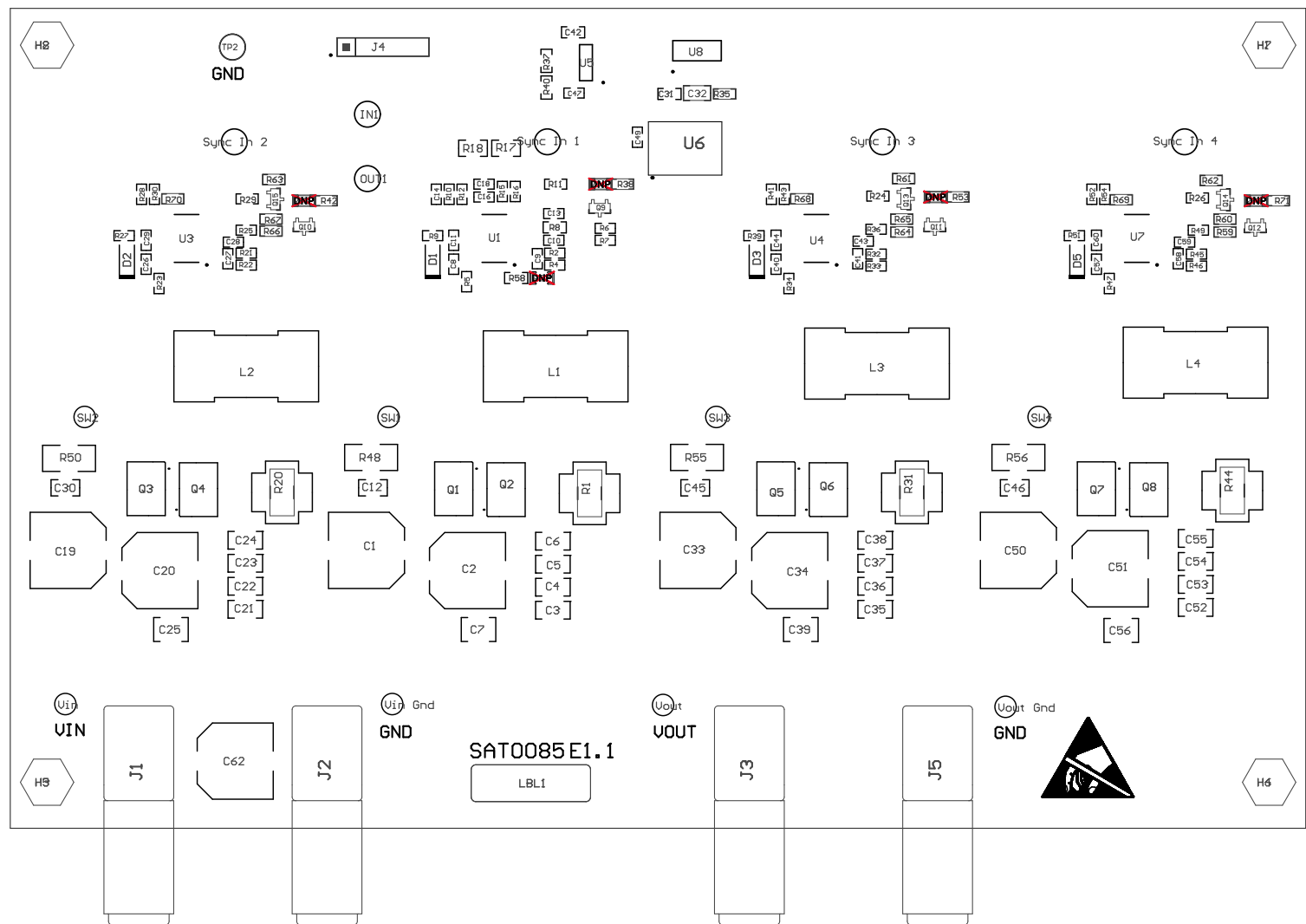


Z21 ■Install label in silkscreened box after final wash. Text shall be 8 pt font. Text shall be per the Label Table in the PDF schematic.
 Z22 ■These assemblies are ESD sensitive, ESD precautions shall be observed.
 Z23 ■These assemblies must be clean and free from flux and all contaminants. Use of no clean flux is not acceptable.
 Z24 ■These assemblies must comply with workmanship standards IPC-A-610 Class 2., unless otherwise specified.
 Z25 ■When installing J1, J2, J3, and J5, solder AND bolt them.



COMPONENTS MARKED 'DNP' SHOULD NOT BE POPULATED, AND MAY NOT BE IN BILL OF MATERIALS
 ASSEMBLY VARIANT: 001

PCB VIEWED FROM TOP SIDE	BOARD #: SAT0085	REV: E1.1	SUN REV: Not In VersionControl
IGNORE -> Top Overlay			
PLOT NAME = Top Assembly Drawing	GENERATED : 7/10/2014 2:48:04 PM	TEXAS INSTRUMENTS	



COMPONENTS MARKED 'DNP' SHOULD NOT BE POPULATED, AND MAY NOT BE IN BILL OF MATERIALS
ASSEMBLY VARIANT: 001

PCB VIEWED FROM BOTTOM SIDE	BOARD #: SAT0085	REV: E1.1	SUN REV: Not In VersionControl
	IGNORE -> Bottom Overlay		
PLOT NAME = Bottom Assembly Drawing	GENERATED : 7/10/2014 2:48:04 PM		TEXAS INSTRUMENTS