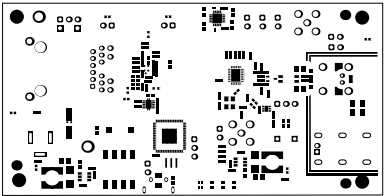
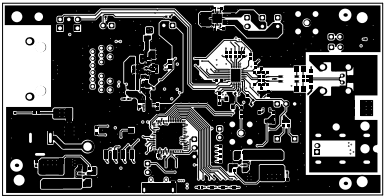


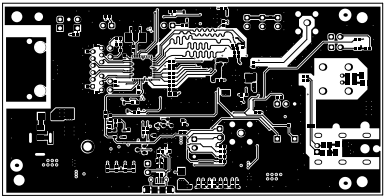
ALL ARTWORK VIEWED FROM TOP SIDE	BOARD #: HSDC123	REV: A	SUN REV: Not In VersionControl
LAYER NAME = Top Overlay	TID #: N/A		
PLOT NAME = Top Overlay	GENERATED : 4/19/2022 3:14:51 PM		TEXAS INSTRUMENTS



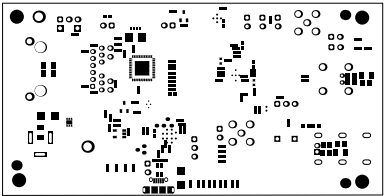
ALL ARTWORK VIEWED FROM TOP SIDE	BOARD #: HSDC123	REV: A	SUN REV: Not In VersionControl
LAYER NAME = Top Solder	TID #: N/A		
PLOT NAME = Top Solder Mask	GENERATED : 4/19/2022 3:14:51 PM	TEXAS INSTRUMENTS	



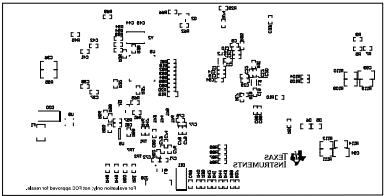
ALL ARTWORK VIEWED FROM TOP SIDE	BOARD #: HSDC123	REV: A	SUN REV: Not In VersionControl
LAYER NAME = Top Layer	TID #: N/A		
PLOT NAME = Top Layer	GENERATED : 4/19/2022 3:14:51 PM		TEXAS INSTRUMENTS



ALL ARTWORK VIEWED FROM TOP SIDE	BOARD #: HSDC123	REV: A	SUN REV: Not In VersionControl
LAYER NAME = Bottom Layer	TID #: N/A		
PLOT NAME = Bottom Layer	GENERATED : 4/19/2022 3:14:51 PM	TEXAS INSTRUMENTS	

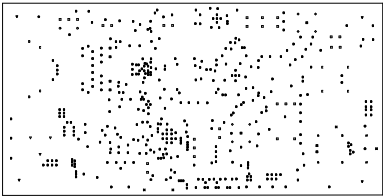


ALL ARTWORK VIEWED FROM TOP SIDE	BOARD #: HSDC123	REV: A	SUN REV: Not In VersionControl
LAYER NAME = Bottom Solder	TID #: N/A		
PLOT NAME = Bottom Solder Mask	GENERATED : 4/19/2022 3:14:51 PM	TEXAS INSTRUMENTS	

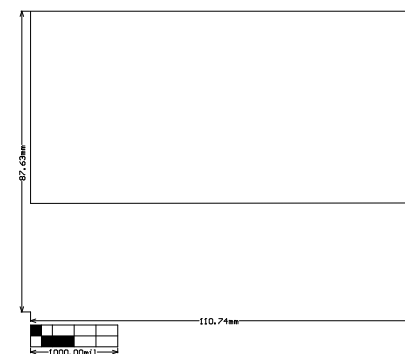


ALL ARTWORK VIEWED FROM TOP SIDE	BOARD #: HSDC123	REV: A	SUN REV: Not In VersionControl
LAYER NAME = Bottom Overlay	TID #: N/A		
PLOT NAME = Bottom Overlay	GENERATED : 4/19/2022 3:14:51 PM		TEXAS INSTRUMENTS

Net definitions: Routed Path Length = C_{net} (calculated from $\text{net}(\text{start node position to last end node position})$)
 Net Length = Routed Path Length + Tool Size = S_{net} (length as defined in the PCB layer)



ALL ARTWORK VIEWED FROM TOP SIDE	BOARD #: HSDC123	REV: A	SUN REV: Not In VersionControl
LAYER NAME = Drill Drawing	TID #: N/A		
PLOT NAME = Drill Drawing	GENERATED : 4/19/2022 3:14:51 PM		TEXAS INSTRUMENTS



ALL ARTWORK VIEWED FROM TOP SIDE	BOARD #: HSDC123	REV: A	SUN REV: Not In VersionControl
LAYER NAME =	TID #: N/A		
PLOT NAME = Board Dimensions	GENERATED : 4/19/2022 3:14:52 PM	TEXAS INSTRUMENTS	