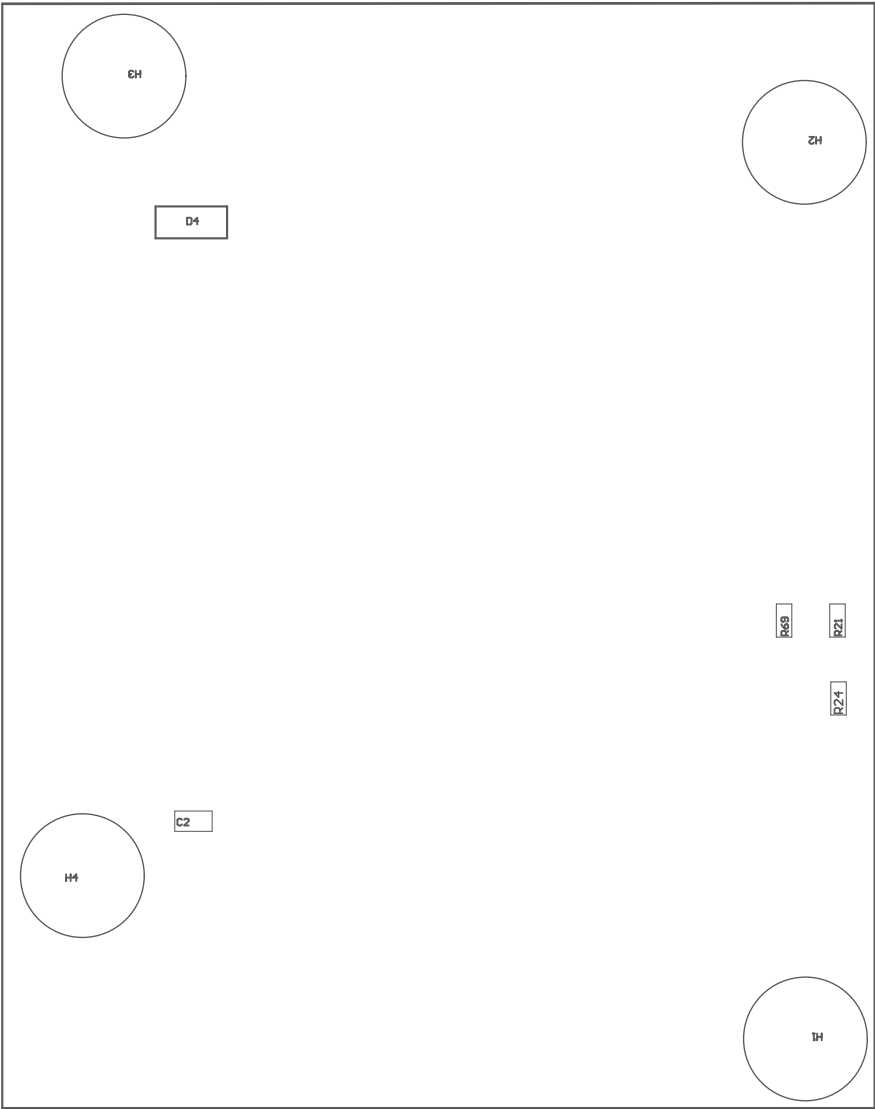


224 ■ These assemblies must comply with workmanship standards IPC-A-610 Class 2, unless otherwise specified.



PCB VIEWED FROM TOP SIDE	BOARD #: MD074	REV: A	SUN REV: c31e3f6dcfc7dba06a978d01e673944bddc0afe0 [Locally Modified]
	TID #: N/A		
PLOT NAME = Top Assembly Drawing	GENERATED : 11/17/2023 1:09:46 PM		TEXAS INSTRUMENTS



COMPONENTS MARKED 'DNP' SHOULD NOT BE POPULATED.

ASSEMBLY VARIANT: 001

PCB VIEWED FROM BOTTOM SIDE	BOARD #1MDD74	REV1A	SUN REV1c3fe3f6dcfc7dba06a878d01e673944bddc0afe0 [Locally Modified]
	TID #1N/A		
PLOT NAME =Bottom Assembly Drawing	GENERATED :11/17/20231:09:46 PM	TEXAS INSTRUMENTS	