

1

2

3

4

5

6

A

B

C

D

Revision History

| Rev | ECN # | Approved Date | Approved by | Notes |
|-----|-------|---------------|-------------|-------|
| N/A | N/A | N/A | N/A | N/A |

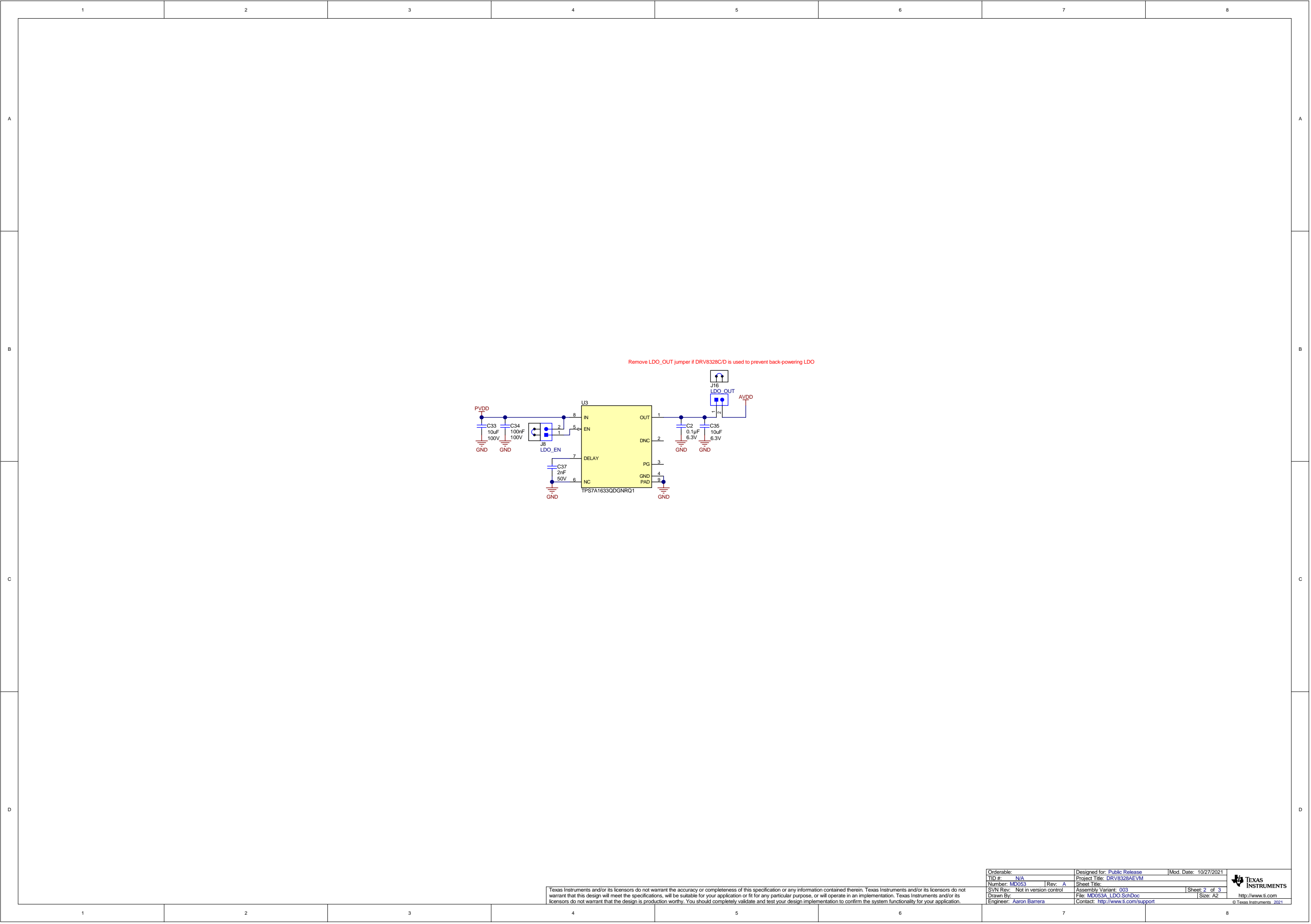
Place Block Diagram here (if appropriate) or delete this text box.
If using a block diagram from another tool, save the picture as a .bmp file.
Then, use menu Place|Drawing Tools|Graphic to insert the .png/.svg/.bmp file on the schematic.

| | | | | | |
|---|--|--|--|---|--|
| Orderable: | | Designed for: Public Release | | Mod. Date: 5/6/2021 | |
| TID #: N/A | | Project Title: DRV8328AEVM | | | |
| Number: MD053 | | Rev: A | | Sheet Title: | |
| SVN Rev: Not in version control | | Assembly Variant: 003 | | Sheet: 1 of 5 | |
| Drawn By: | | File: MD053A_BlockDiagram.SchDoc | | Size: B | |
| Engineer: Aaron Barrera | | Contact: http://www.ti.com/support | | http://www.ti.com | |

Texas Instruments and/or its licensors do not warrant the accuracy or completeness of this specification or any information contained therein. Texas Instruments and/or its licensors do not warrant that this design will meet the specifications, will be suitable for your application or fit for any particular purpose, or will operate in an implementation. Texas Instruments and/or its licensors do not warrant that the design is production worthy. You should completely validate and test your design implementation to confirm the system functionality for your application.

© Texas Instruments

2021



[illegible]

DRV8328C/D VARIANT PIN SELECT

Populate R1-R10 for C/D variants

AVDD

INLA R1 0 P25

INHC R2 0 P20

INLC R3 0 P23

INHA R4 0 P19

DRVOFF R5 0 P22

INHB R6 0 P18

INLB R7 0 P21

nFAULT R8 0 P24

nSLEEP R9 0 P27

R10 0 P26

C1 1µF 6.3V

GND

Spare C1 cap for DRV8328C/D

STATUS LEDS

3.3V LED

AVDD

J1

D1 Green

R22 820

GND

nFAULT LED

AVDD

J2

D2 Red

R23 820

nFAULT

PVDD LED

PVDD

J3

D3 Green

R24 2.00k

GND

Launchpad LED

AVDD

J4

D4 Orange

R25 820

MCU_LED

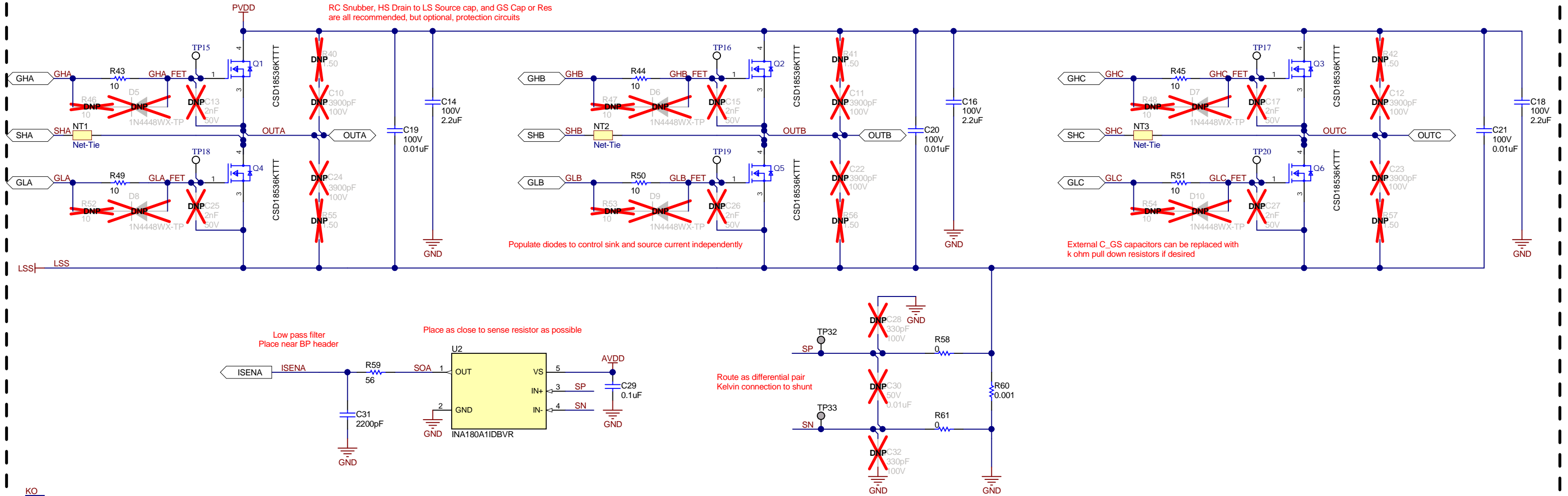
[illegible]

POWER STAGE AND FETS

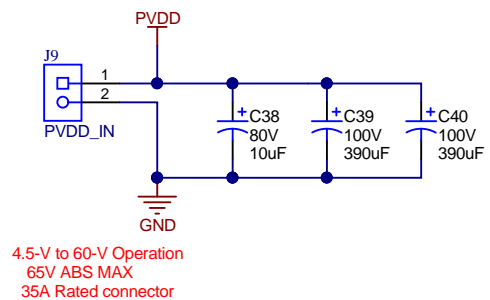
PHASE A

PHASE B

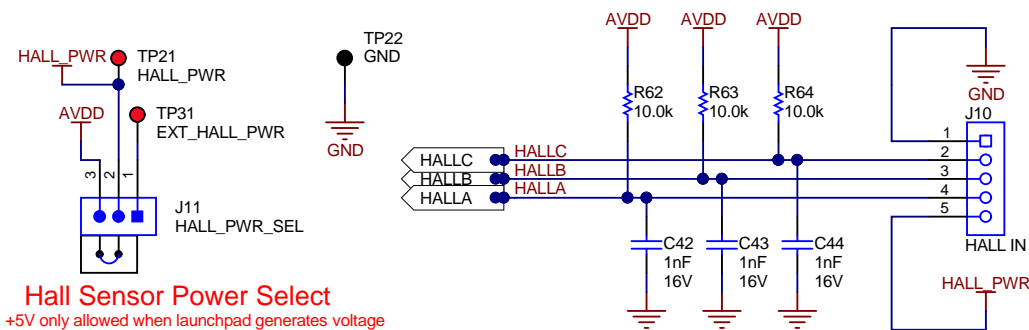
PHASE C



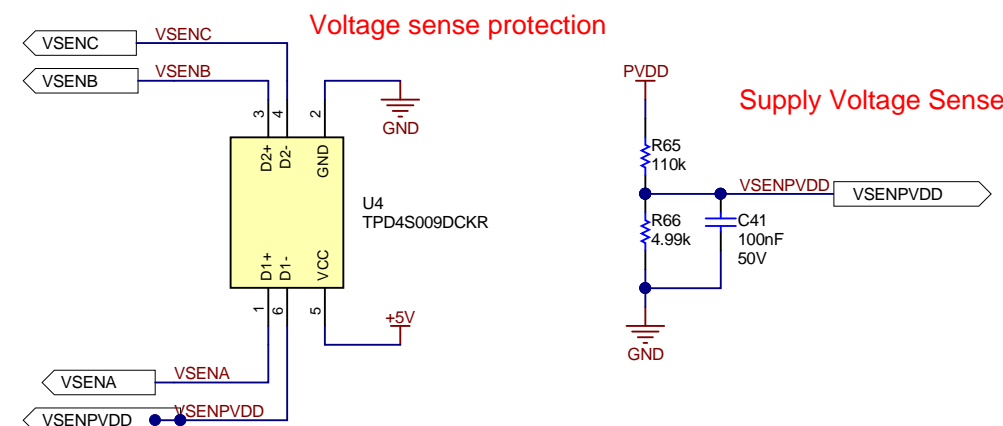
MAIN SUPPLY INPUT



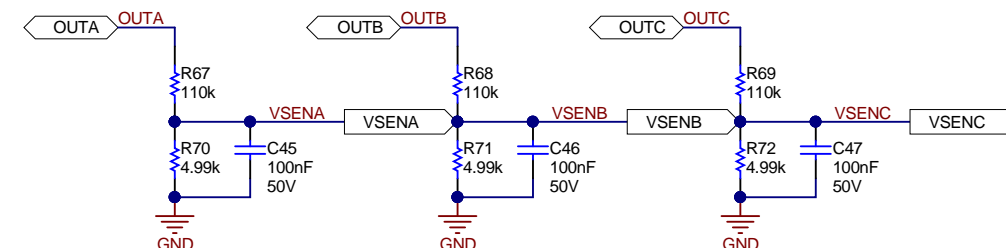
HALL SENSOR INPUT AND POWER



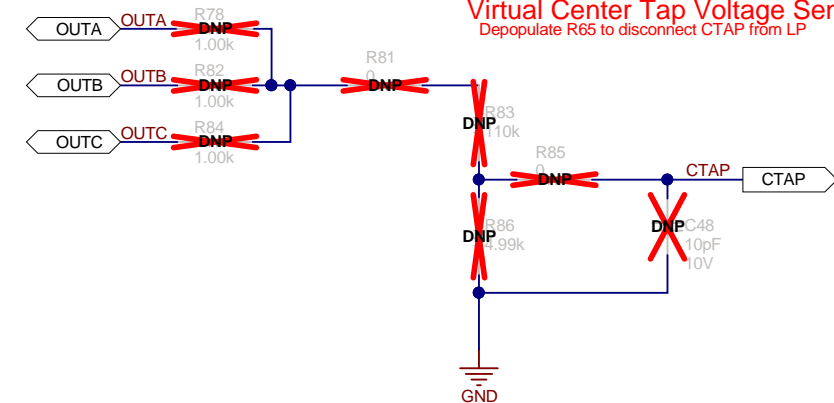
VOLTAGE SENSE & PROTECTION



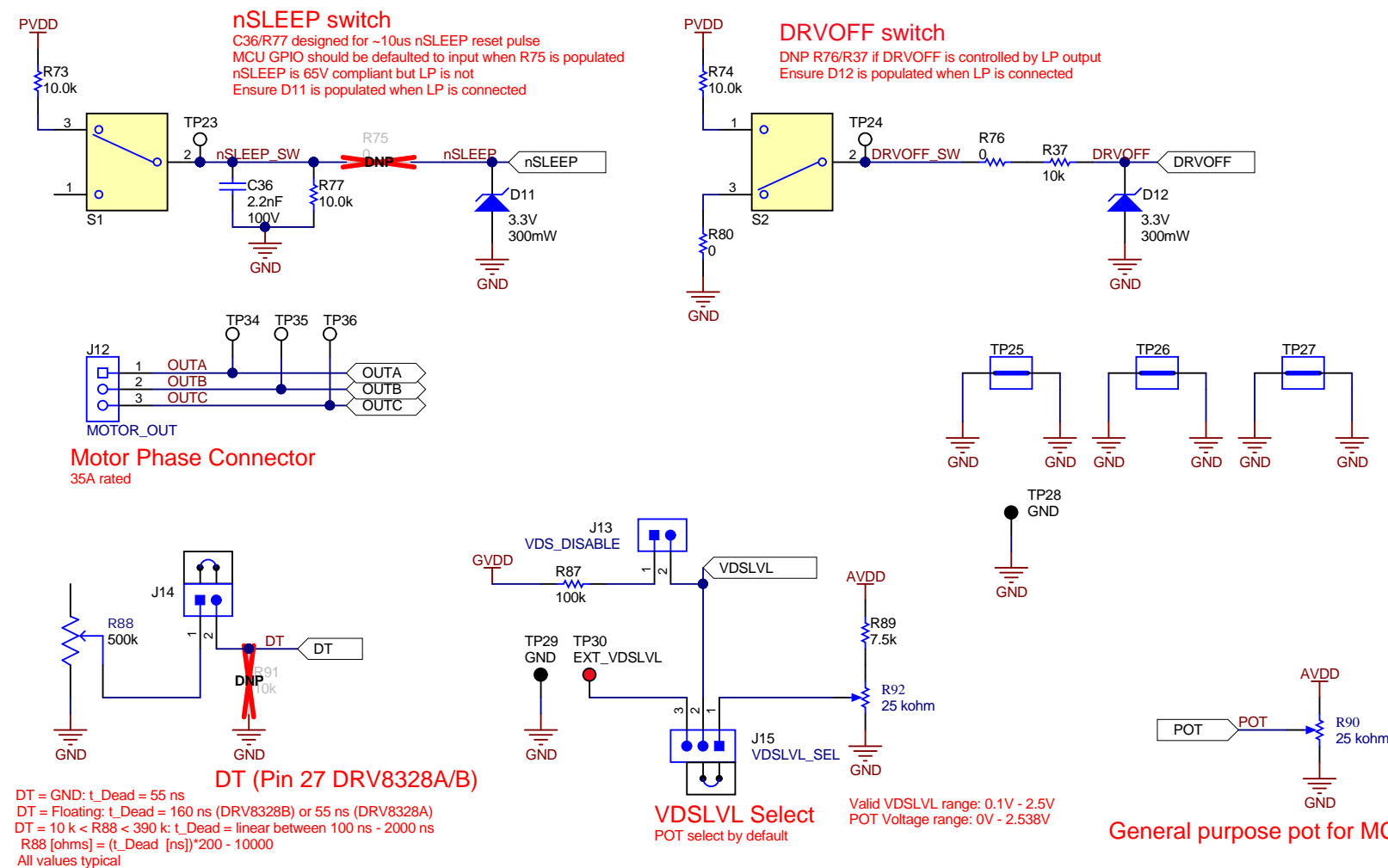
Phase Voltage Sense



Virtual Center Tap Voltage Sense



CONNECTORS, SELECTORS, & ANALOG CONTROL INTERFACE



| | | |
|---------------------------------|--|-----------------------|
| Orderable: | Designed for: Public Release | Mod. Date: 10/28/2021 |
| TID #: N/A | Project Title: DRV8328AEVM | |
| Number: MD053 | Rev: A | Sheet Title: |
| SVN Rev: Not in version control | Assembly Variant: 003 | Sheet: 4 of 5 |
| Drawn By: | File: MD053A_POWER_AND_CONNECTORS.SchDoc | Size: B |
| Engineer: Aaron Barrera | Contact: http://www.ti.com/support | |

Texas Instruments and/or its licensors do not warrant the accuracy or completeness of this specification or any information contained therein. Texas Instruments and/or its licensors do not warrant that this design will meet the specifications, will be suitable for your application or fit for any particular purpose, or will operate in an implementation. Texas Instruments and/or its licensors do not warrant that the design is production worthy. You should completely validate and test your design implementation to confirm the system functionality for your application.

