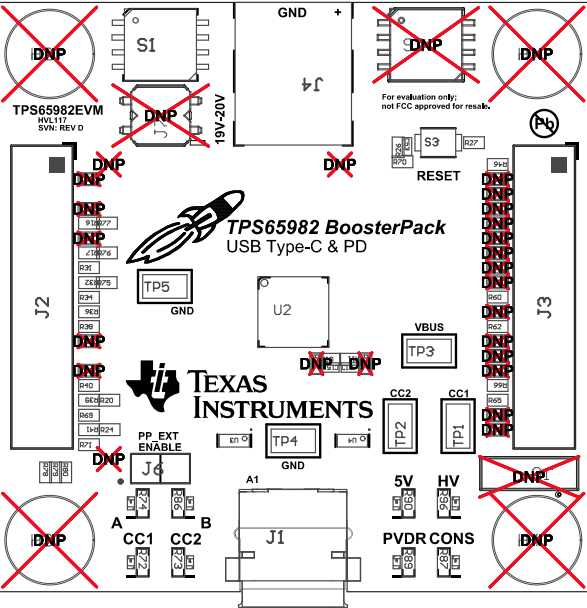


- Z22 ■These assemblies are ESD sensitive, ESD precautions shall be observed.
- Z23 ■These assemblies must be clean and free from flux and all contaminants. Use of no clean flux is not acceptable.
- Z24 ■These assemblies must comply with workmanship standards IPC-A-610 Class 2, unless otherwise specified.

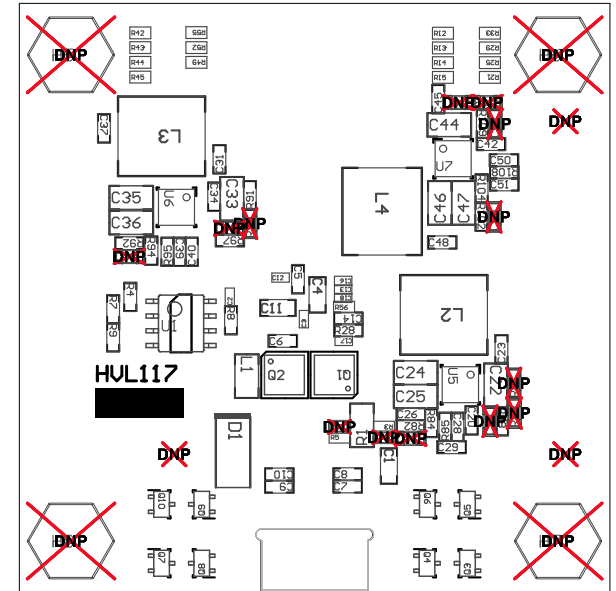
*****ATTENTION*****

J2 and J3 are to be placed on bottom side of board



COMPONENTS MARKED 'DNP' SHOULD NOT BE POPULATED.
ASSEMBLY VARIANT: -001

PCB VIEWED FROM TOP SIDE	BOARD #: HVL117	REV: D	SVN REV: Not In VersionControl
IGNORE -> Top Overlay			
PLOT NAME = Top Assembly Drawing	GENERATED : 6/22/2015 6:40:43 PM	TEXAS INSTRUMENTS	



COMPONENTS MARKED 'DNP' SHOULD NOT BE POPULATED.
 ASSEMBLY VARIANT: -001

PCB VIEWED FROM BOTTOM SIDE	BOARD #: HVL117	REV: D	SUN REV: Not In VersionControl
	IGNORE -> Bottom Overlay		
PLOT NAME = Bottom Assembly Drawing	GENERATED : 6/22/2015 6:40:44 PM		TEXAS INSTRUMENTS