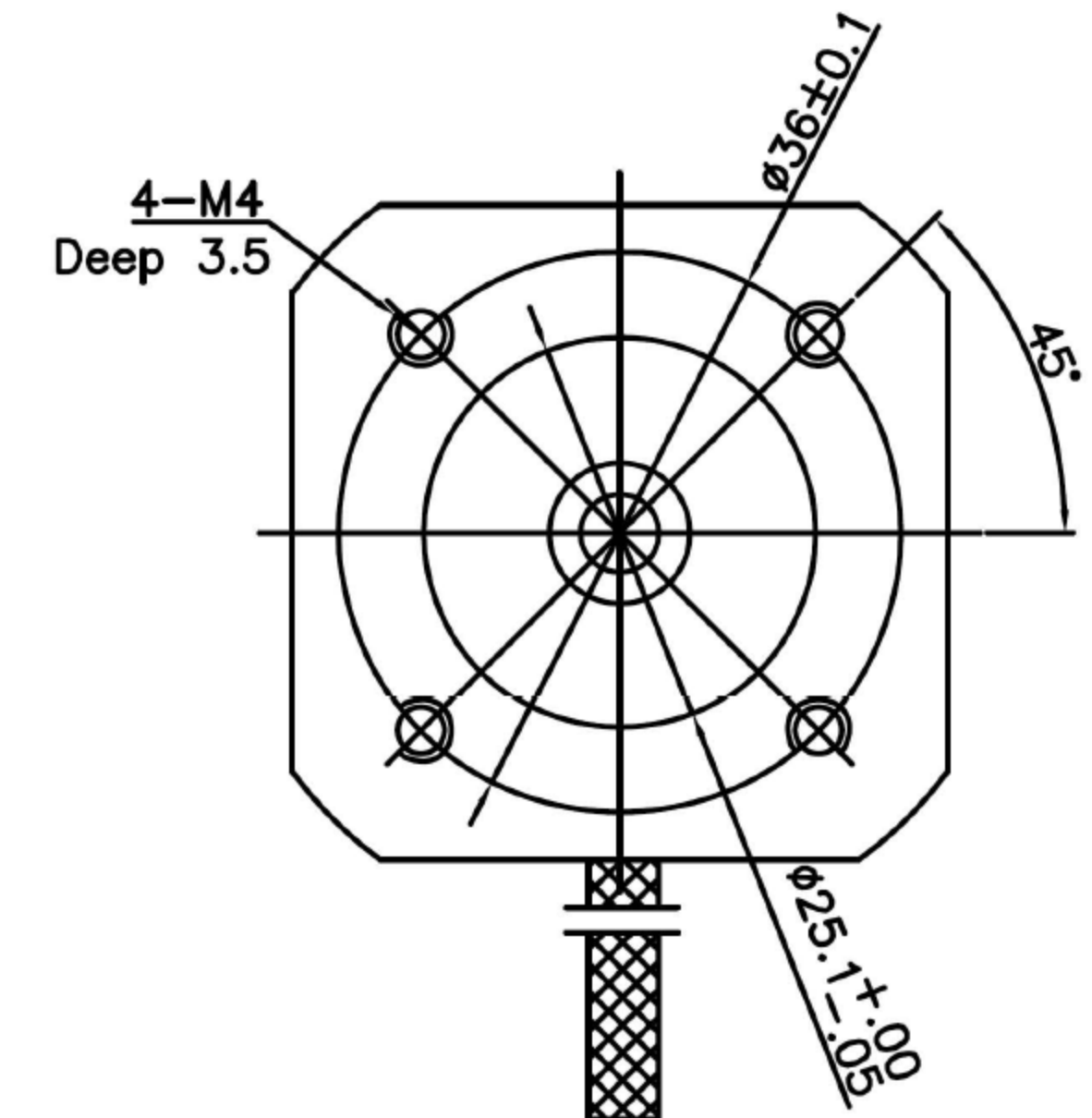
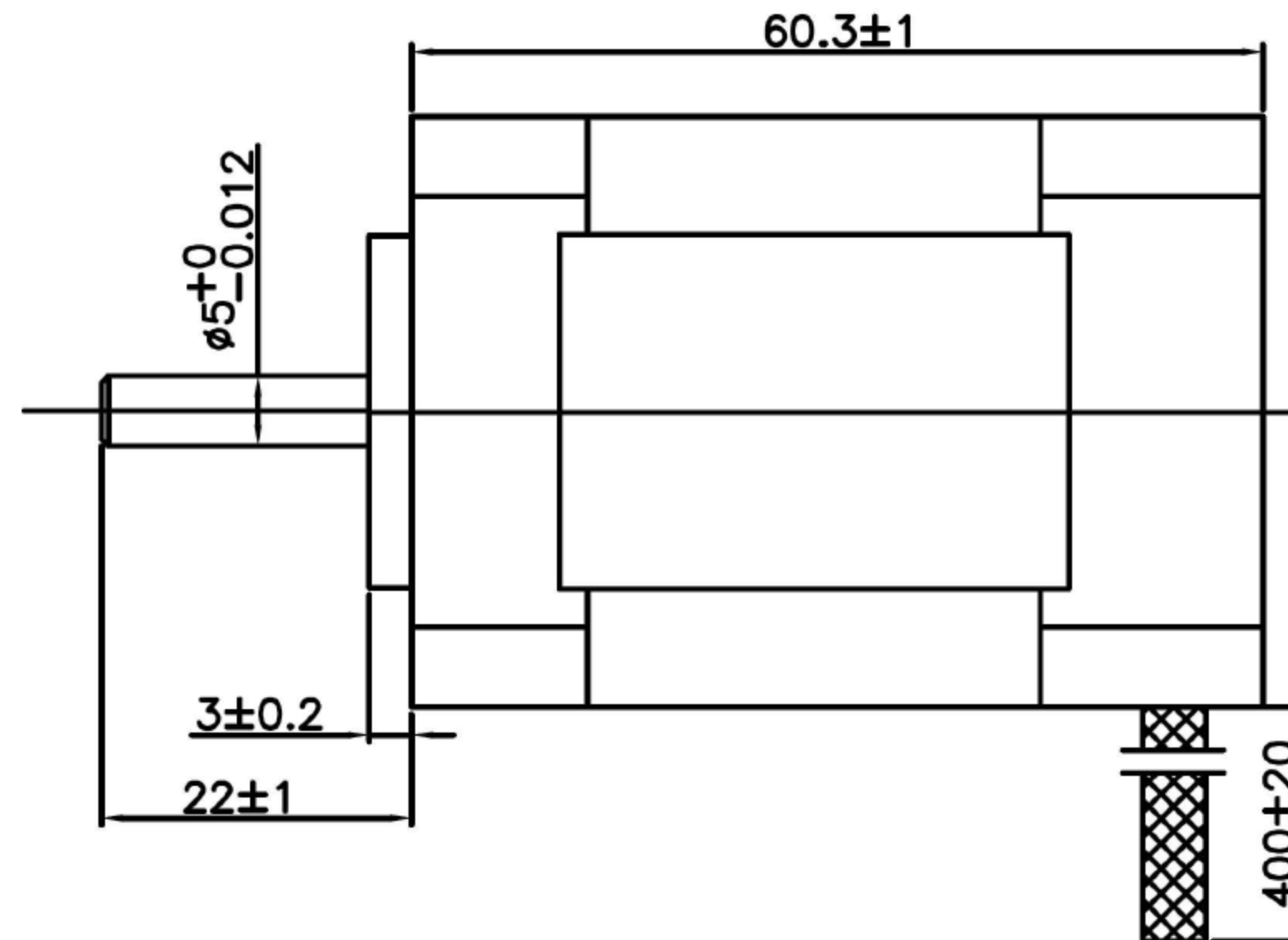
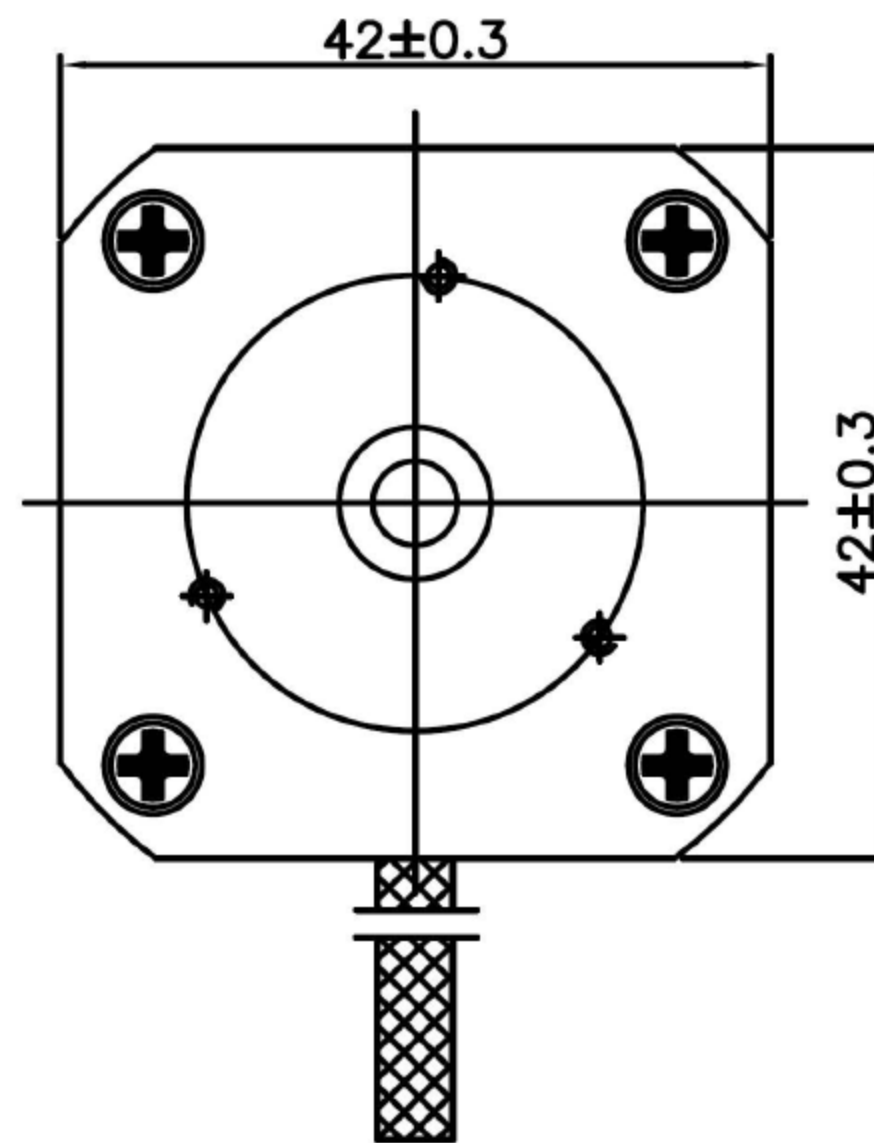
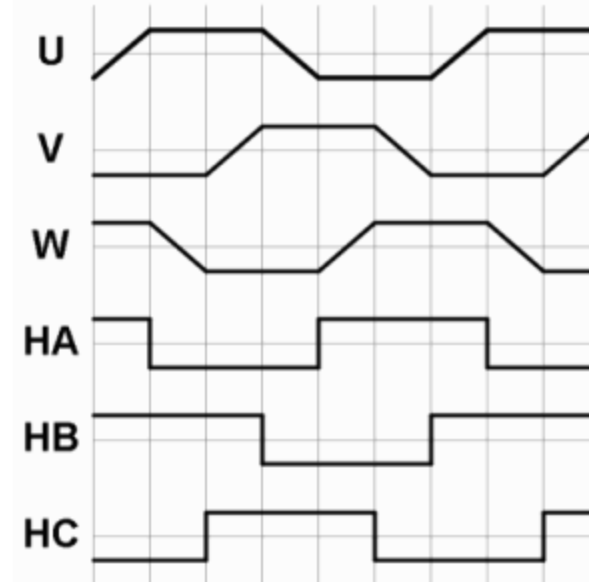


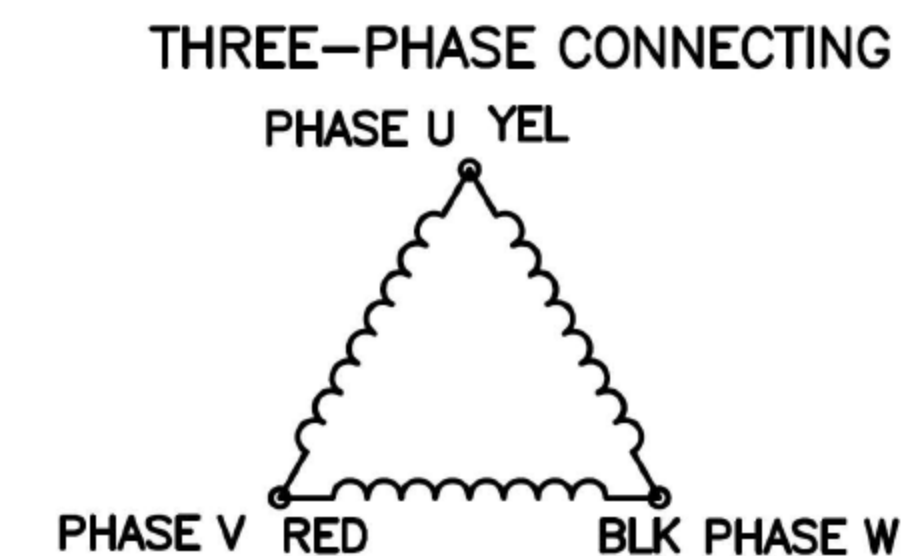
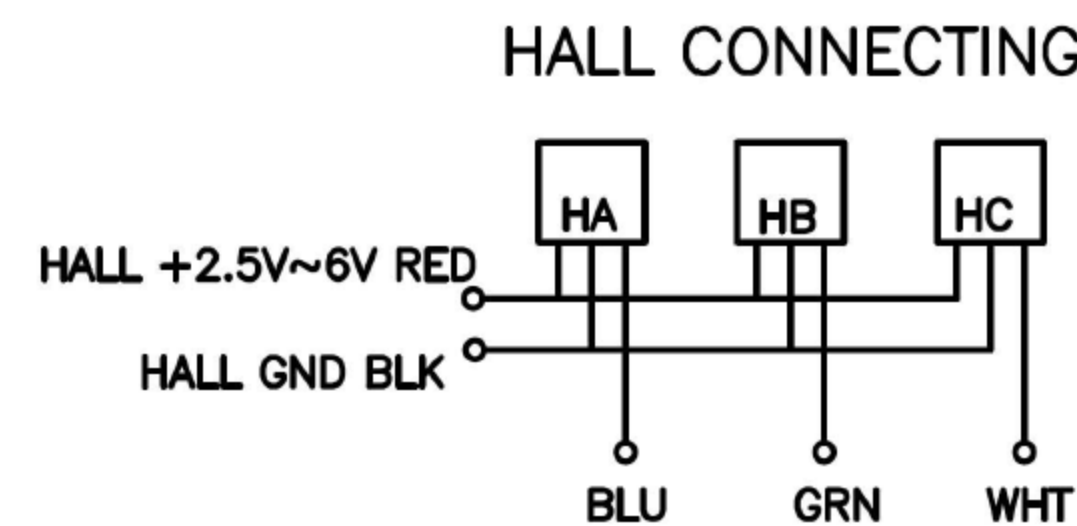
REV	DESCRIPTION	BY	DATE
A	Update hall sensor voltage	Jim	02/18/14



CCW COMMUTATION: VIEWED FROM OUTPUT SHAFT



HALL SENSORS: DRV5013AD  
(CUSTOMER SUPPLIED MATERIAL)





NUMBER OF POLES	8
LINE TO LINE RESISTANCE	0.8±10%ohms @20°C
LINE TO LINE INDUCTANCE	1.2±20% mH
NOMINAL VOLTAGE	24V
NOLOAD SPEED	6000±10%RPM
NOLOAD CURRENT	< 0.5A @25°C
RATED TORQUE	0.125N.m
RATED SPEED	4000±10%RPM
PEAK TORQUE	0.38N.m
TORQUE CONSTANT	0.0355N.m/A
BACK EMF	2.71±10%Vrms/Krpm
ROTOR INERTIA	48 g.cm <sup>2</sup>
WEIGHT	0.45 Kg
WIRING DIAGRAM	
UL1430 AWG20#	
PHASE U	PHASE V
PHASE W	HALL +2.5~6V
HALL A	HALL B
HALL C	HALL GND
YEL	RED
BLK	RED
BLU	GRN
WHT	BLK

Approved by(print): Ross Eisenbeis

Signature: Ross Eisenbeis

Title: TI Applications Eng.

Date: 4/24/2014

UNLESS OTHERWISE SPECIFIED:		NAME	DATE	<div></div>				
TOLERANCES : DECIMALS: .X        ±0.5        ANGULAR: .XX      ±0.25      ±0°30' .XXX     ±0.1  UNIT: mm DO NOT SCALE DRAWING		DRAWN						
		REVIEW	J.C.				02/18/14	
		ENG APPR.	J.C.	02/18/14	TITLE:  NEMA 17 BLDC			
MATERIAL:		PROPRIETARY AND CONFIDENTIAL THE INFORMATION CONTAINED IN THIS DRAWING IS THE SOLE PROPERTY OF <TELCO INTERCONTINENTAL CORP>. ANY REPRODUCTION IN PART OR AS A WHOLE WITHOUT THE WRITTEN PERMISSION OF <TELCO INTERCONTINENTALCORP> IS PROHIBITED						
WEIGHT:					SIZE	PART. NO.  DT4260-24-055-04H-TI		REV  A
PROJECTION: THIRD ANGLE 					SCALE:		STAGE:	SHEET:1 OF 1