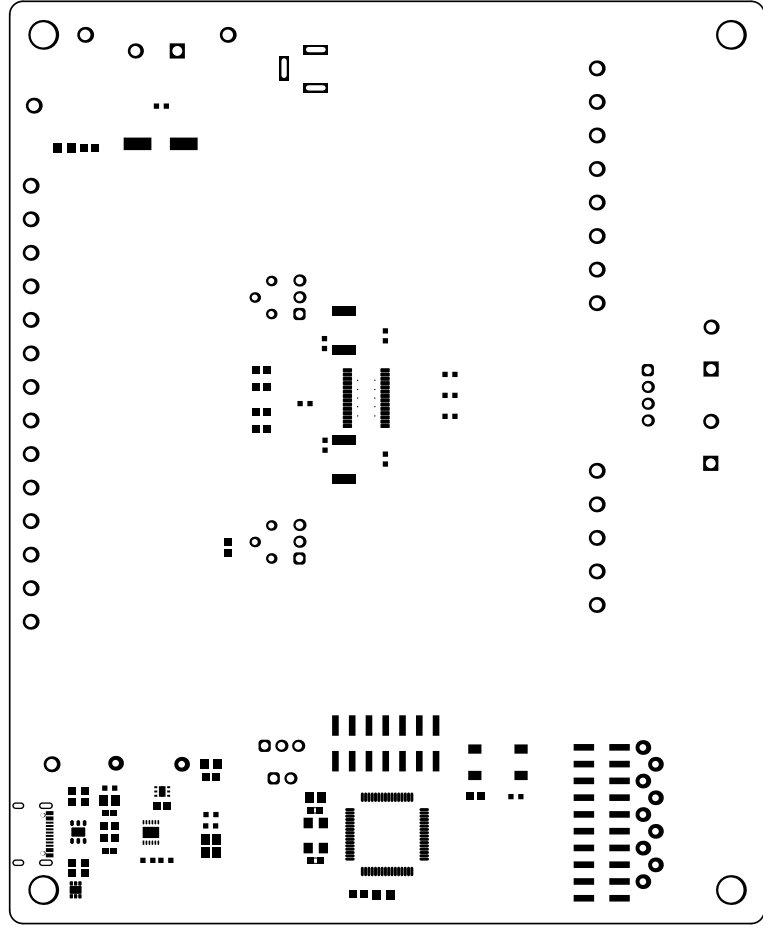
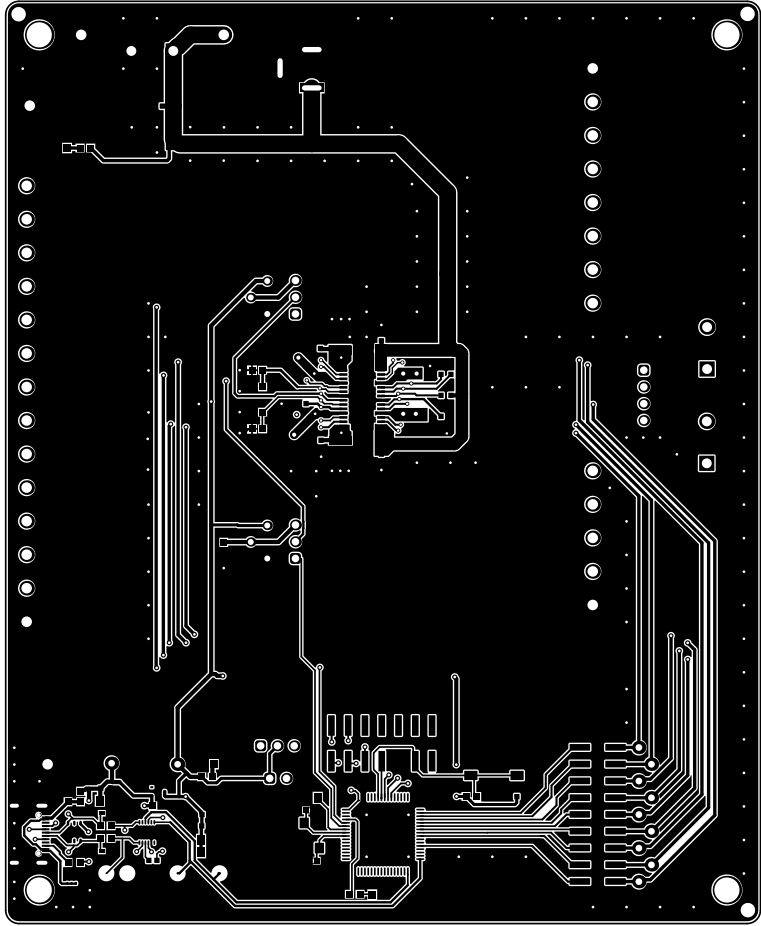


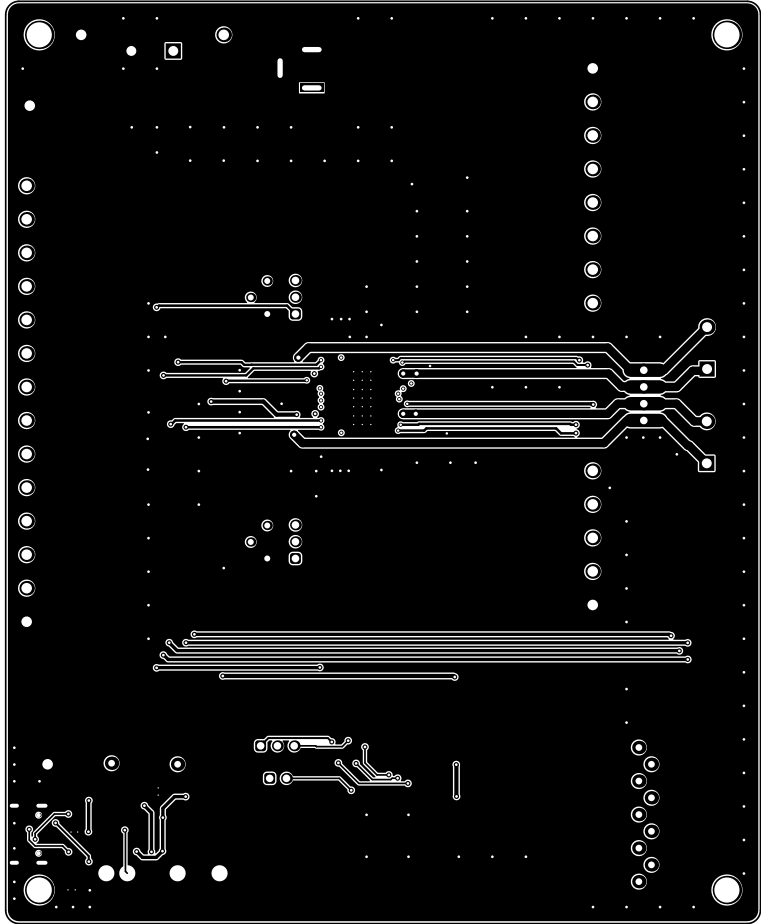
Layer Stack Up Detail for: DRV8818EVM

Layer Name

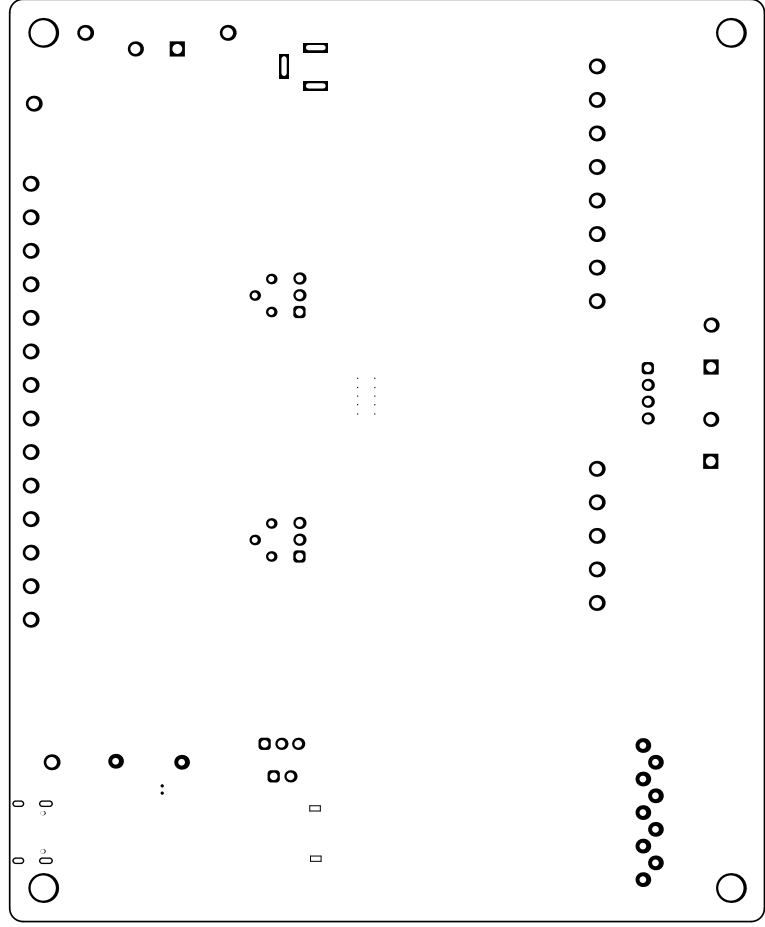




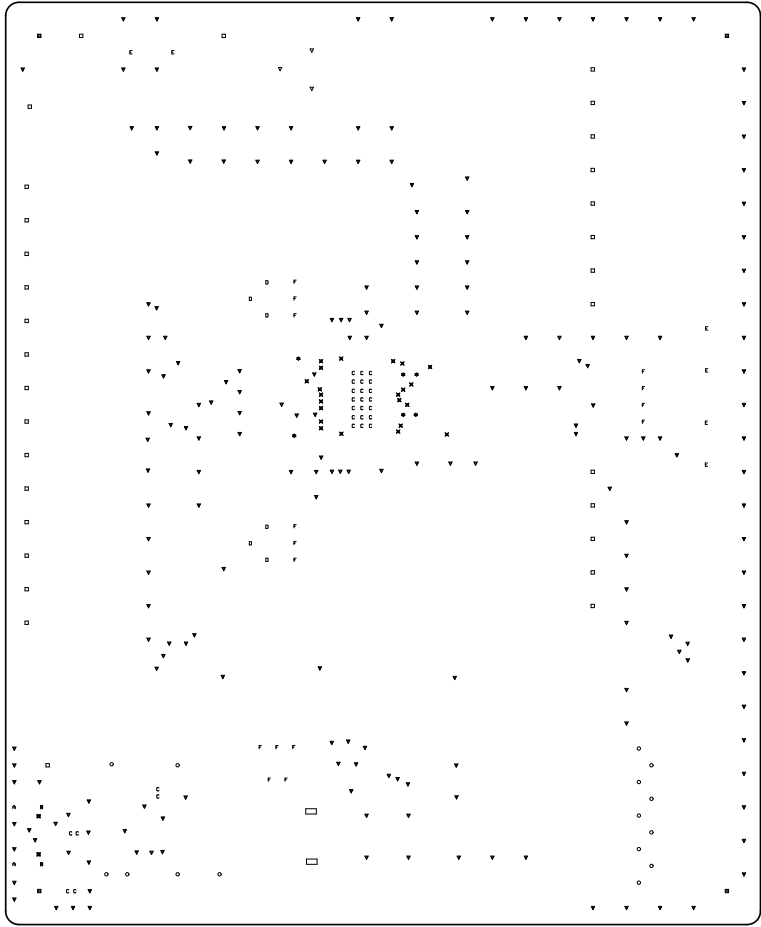
Top Layer



BottomLayer







- Notes:
1. NUMBER OF FINISHED LAYERS: 4
 2. BOARD MATERIAL AND CONSTRUCTION TO BE UL
APPROVED AND MARKED ON THE FINISHED BOARD.
 3. LAMINATE MATERIAL: COPPER-CLAD FR-4
 4. COPPER WEIGHT: 1oz FINISHED
 5. FINISHED THICKNESS: .062 +/- .010
 6. MIN PLATING THICKNESS IN THROUGH HOLES: .001"
 7. Gold Plating
 8. LPI SOLDERMASK BOTH SIDES USING APPROPRIATE
LAYER ARTWORK: COLOR = RED
 9. LPI SILKSCREEN AS REQUIRED: COLOR - WHITE
 10. VENDOR INFORMATION TO BE INCORPORATED
ON BACK SIDE WHENEVER POSSIBLE
 11. MINIMUM COPPER CONDUCTOR WIDTH IS: 8 MILS
 12. MINIMUM CONDUCTOR SPACING IS: 8 MILS

Symbol	Count	Hole Size	Hole Length	Routed Path Length	Plated	Hole Type
⌘	2	25.59mil (0.650mm)	-	-	NPTH	Round
A	2	55.12mil (1.400mm)	23.62mil (0.600mm)	-31.50mil (-0.800mm)	PTH	Slot
B	2	66.93mil (1.700mm)	23.62mil (0.600mm)	-43.31mil (-1.100mm)	PTH	Slot
▽	3	31.50mil (0.800mm)	118.11mil (3.000mm)	86.61mil (2.200mm)	PTH	Slot
■	4	150.00mil (3.810mm)	-	-	PTH	Round
✱	6	25.00mil (0.635mm)	-	-	PTH	Round
D	6	35.43mil (0.900mm)	-	-	PTH	Round
E	6	59.06mil (1.500mm)	-	-	PTH	Round
O	15	40.00mil (1.016mm)	-	-	PTH	Round
F	15	45.28mil (1.150mm)	-	-	PTH	Round
⌘	22	15.00mil (0.381mm)	-	-	PTH	Round
C	27	7.87mil (0.200mm)	-	-	PTH	Round
□	31	63.00mil (1.600mm)	-	-	PTH	Round
▽	203	16.00mil (0.406mm)	-	-	PTH	Round
Drill Drawings Total						

Slot definitions : Routed Path Length = Calculated from tool start centre position to tool end centre position.
Hole Length = Routed Path Length + Tool Size = Slot length as defined in the PCB layout

