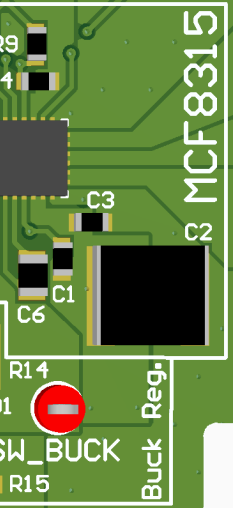
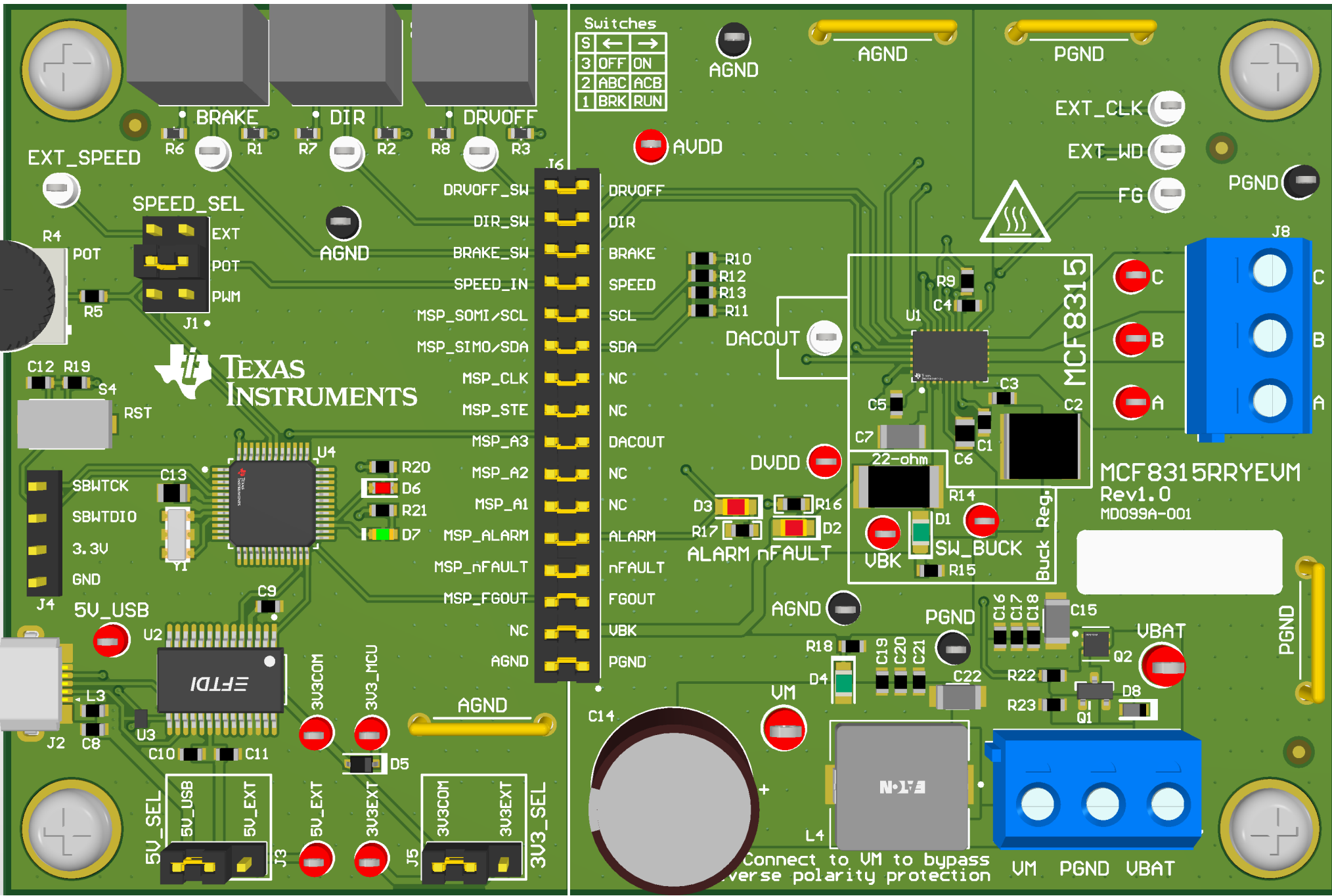


Switches

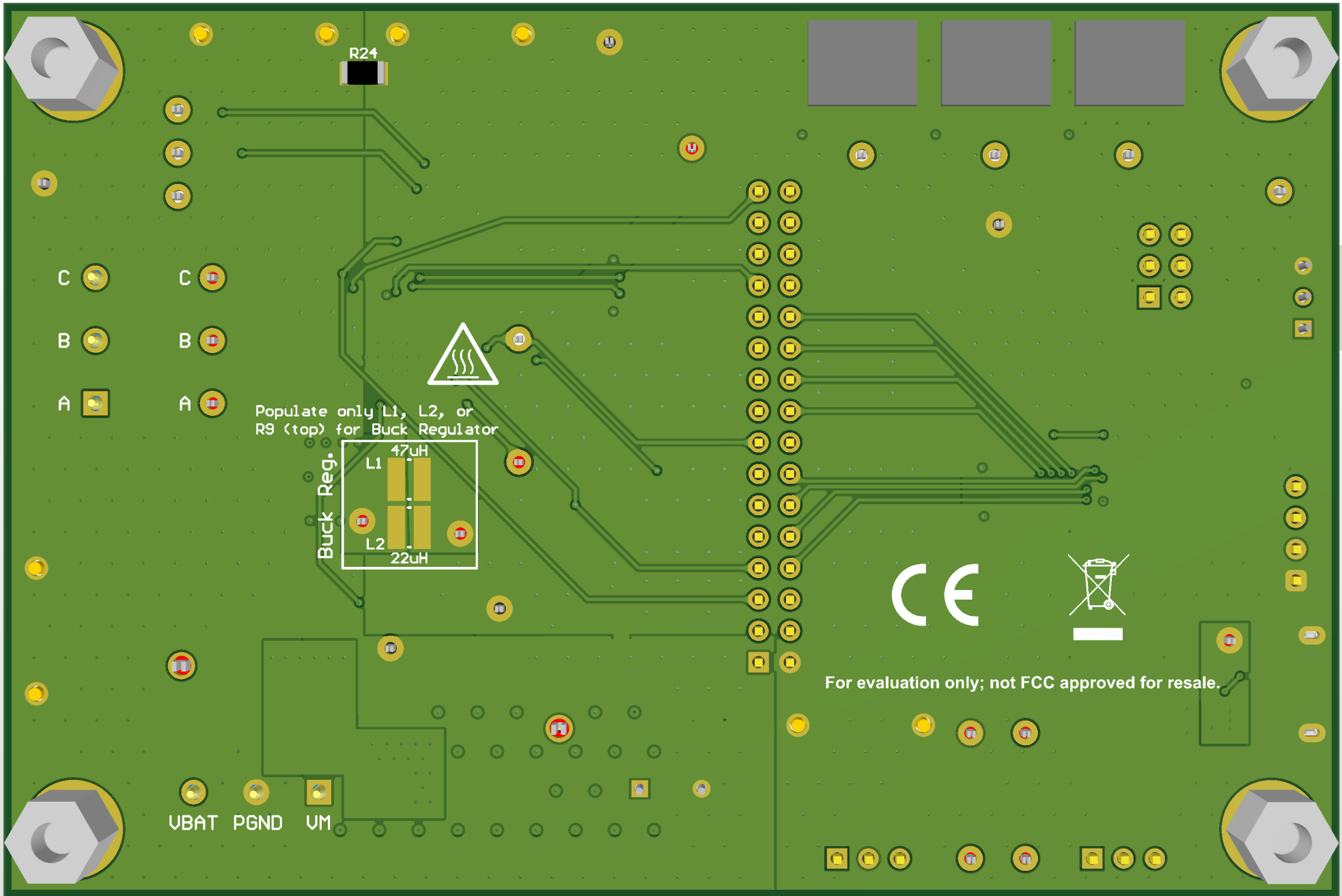
S	←	→
3	OFF	ON
2	ABC	ACB
1	BRK	RUN



MCF8315RREVM  
Rev1.0  
MD099A-001

Connect to UM to bypass  
reverse polarity protection

UM PGND VBAT



Populate only L1, L2, or  
R9 (top) for Buck Regulator

Buck Reg.

L1 47uH  
L2 22uH

CE



For evaluation only; not FCC approved for resale.

UBAT PGND VM