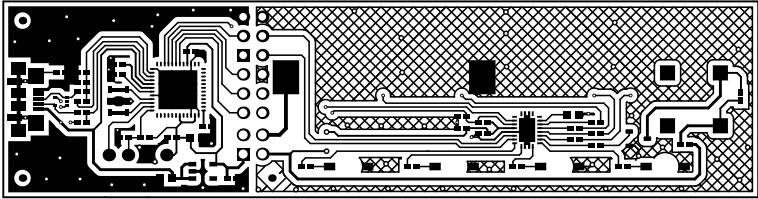
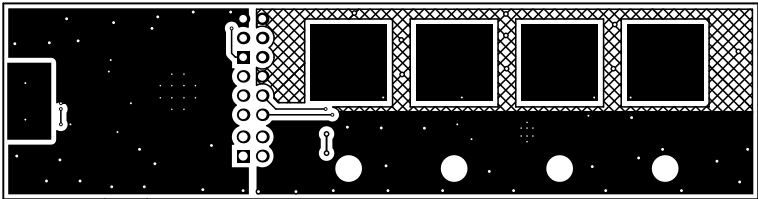


ALL ARTWORK VIEWED FROM TOP SIDE	BOARD #: MCU043	REV: A	SUN REV: Not In VersionControl
LAYER NAME = Top Solder	TID #: N/A		
PLOT NAME = Top Solder Mask	GENERATED : 4/9/2018	10:56:37 AM	TEXAS INSTRUMENTS



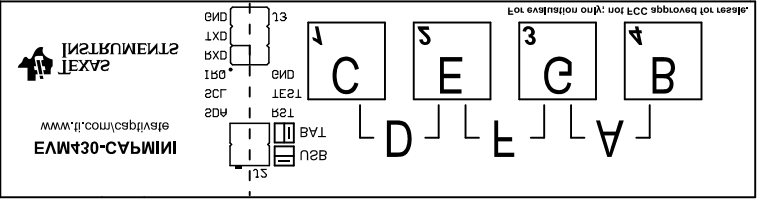
ALL ARTWORK VIEWED FROM TOP SIDE	BOARD #: MCU043	REV: A	SUN REV: Not In VersionControl
LAYER NAME = Top Layer	TID #: N/A		
PLOT NAME = Top Layer	GENERATED : 4/9/2018	10:56:39 AM	TEXAS INSTRUMENTS



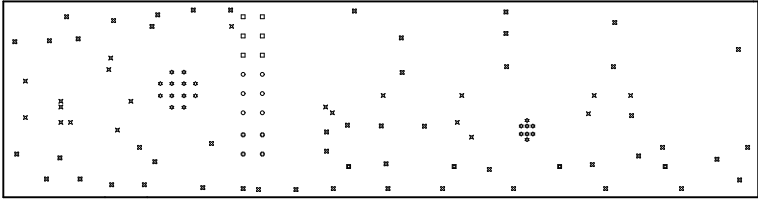
ALL ARTWORK VIEWED FROM TOP SIDE	BOARD #: MCU043	REV: A	SUN REV: Not In VersionControl
LAYER NAME = Bottom Layer	TID #: N/A		
PLOT NAME = Bottom Layer	GENERATED : 4/9/2018	10:56:41 AM	TEXAS INSTRUMENTS



ALL ARTWORK VIEWED FROM TOP SIDE	BOARD #: MCU043	REV: A	SUN REV: Not In VersionControl
LAYER NAME = Bottom Solder	TID #: N/A		
PLOT NAME = Bottom Solder Mask	GENERATED : 4/9/2018 10:56:43 AM		TEXAS INSTRUMENTS

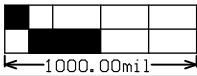
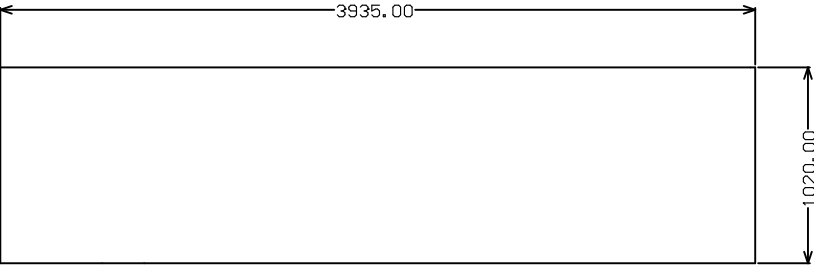


ALL ARTWORK VIEWED FROM TOP SIDE	BOARD #: MCU043	REV: A	SUN REV: Not In VersionControl
LAYER NAME = Bottom Overlay	TID #: N/A		
PLOT NAME = Bottom Overlay	GENERATED : 4/9/2018 10:56:44 AM	TEXAS INSTRUMENTS	



Symbol	Quantity	Finished Hole Size	Plated	Hole Type	Drill Layer Pair	Hole Tolerance
■	4	88.58mil (2.250mm)	NPTH	Round	Top Layer - Bottom Layer	
☆	20	7.87mil (0.200mm)	PTH	Round	Top Layer - Bottom Layer	
⊠	20	10.00mil (0.254mm)	PTH	Round	Top Layer - Bottom Layer	
⊗	51	15.00mil (0.381mm)	PTH	Round	Top Layer - Bottom Layer	
□	6	40.00mil (1.016mm)	PTH	Round	Top Layer - Bottom Layer	
○	6	45.00mil (1.143mm)	PTH	Round	Top Layer - Bottom Layer	
⊙	4	47.24mil (1.200mm)	PTH	Round	Top Layer - Bottom Layer	
	111 Total					

ALL ARTWORK VIEWED FROM TOP SIDE	BOARD #: MCU043	REV: A	SUN REV: Not In VersionControl
LAYER NAME = Drill Drawing	TID #: N/A		
PLOT NAME = Drill Drawing	GENERATED : 4/9/2018	10:56:46 AM	TEXAS INSTRUMENTS



ALL ARTWORK VIEWED FROM TOP SIDE	BOARD #: MCU043	REV: A	SUN REV: Not In VersionControl
LAYER NAME = M2 Board Dimensions	TID #: N/A		
PLOT NAME = Board Dimensions	GENERATED : 4/9/2018 10:56:48 AM		TEXAS INSTRUMENTS