

ZZ1 ■Install label in silkscreened box after final wash. Text shall be 8 pt font. Text shall be per the Label Table in the PDF schematic.

ZZ2 ■These assemblies are ESD sensitive, ESD precautions shall be observed.

ZZ3 ■These assemblies must be clean and free from flux and all contaminants. Use of no clean flux is not acceptable.

ZZ4 ■These assemblies must comply with workmanship standards IPC-A-610 Class 2, unless otherwise specified.

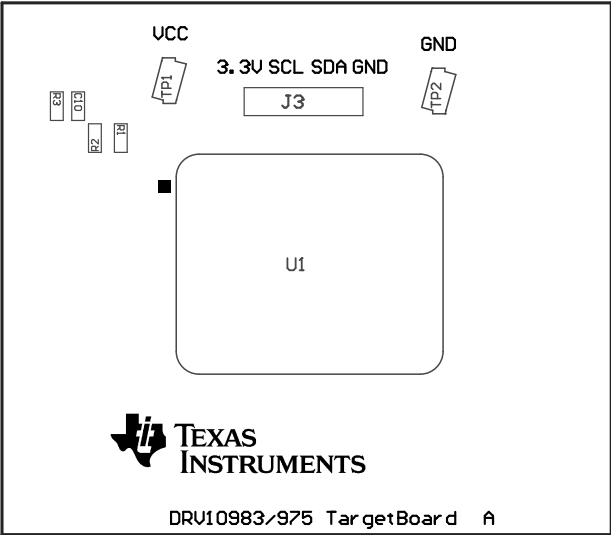
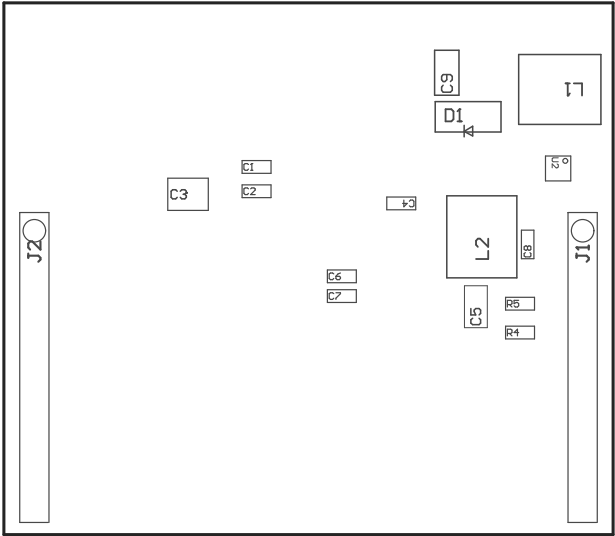


TABLE 1

Variant	Label text
001	ChangeMe!
002	ChangeMe!

COMPONENTS MARKED 'DNP' SHOULD NOT BE POPULATED.  
ASSEMBLY VARIANT: 001

PCB VIEWED FROM TOP SIDE	BOARD #: DRV10983/975 TargetBoard	SUN REV: Not In VersionControl
IGNORE -> Top Overlay		
PLOT NAME = Top Assembly Drawing	GENERATED : 8/21/2014 11:43:43 AM	TEXAS INSTRUMENTS



COMPONENTS MARKED 'DNP' SHOULD NOT BE POPULATED.  
ASSEMBLY VARIANT: 001

PCB VIEWED FROM BOTTOM SIDE	BOARD #: DRV10983/975 Target Board	SUN REV: Not In VersionControl
	IGNORE -> Bottom Overlay	
PLOT NAME = Bottom Assembly Drawing	GENERATED : 8/21/2014 11:43:43 AM	TEXAS INSTRUMENTS