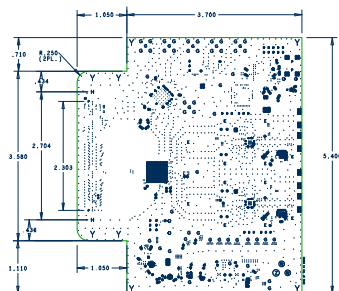


REVISIONS		DATE	APPROVED
ZONE	LTR	DESCRIPTION	

13. ALL OUTER LAYERS USING A 5.5 mil TRACE WIDTH SHALL BE 50ohms SINGLE ENDED, +/- 10% TOLERANCE.
ALL OUTER LAYERS USING A N/A mil TRACE WIDTH SHALL BE 100ohms SINGLE ENDED, +/- 10% TOLERANCE.
ALL OUTER LAYERS USING A 7.5 mil TRACE WIDTH AND 6.0 mil SPACING SHALL BE 100 ohms DIFFERENTIAL, +/- 10% TOLERANCE.
ALL INNER LAYERS USING A 4.0 mil TRACE WIDTH AND 6.5 mil SPACING SHALL BE 100 ohms DIFFERENTIAL, +/- 10% TOLERANCE.
14. MINIMUM COPPER CONDUCTOR WIDTH IS: 5MIL.
MINIMUM COPPER SPACING IS: 4.5MIL.
15. SMOBC/IMMERSION GOLD: 3-8 uIN OVER 100-200 uIN NICKEL PLATING.
16. GROUND ETCH ON ALL LAYERS TO BOARD EDGE IS INTENTIONAL. DO NOT PULL BACK.
17. NO CHANGES TO ANY ARTWORK ARE PERMITTED WITHOUT WRITTEN AUTHORIZATION.
18. HOLES SIZE APPLIES AFTER PLATING. TOLERANCE TO BE +.003/- .010.
19. FILL ALL VIA-IN-PADS WITH NON CONDUCTIVE MATERIAL.
20. FINISHED BOARDS MUST BE RoHS COMPLIANT AND SURVIVE A LEAD FREE ASSEMBLY, MAXIMUM REFLOW TEMPERATURE OF 260 DEGREE C (6 PASSES).

Layer	Material / Description
LAYER 1	Copper Foil 0.5oz / Plate to 1.0oz min Layer 1
LAYER 2	FR-370HR Pre-preg 0.011" (material)
LAYER 3	Core 0.006 1.0oz / 1.0oz Layer 2 & 3
LAYER 4	FR-370HR Pre-preg 0.0054" (material)
LAYER 5	Core 0.006" 1.0oz / 1.0oz Layer 4 & 5
LAYER 6	FR-370HR Pre-preg 0.0054" (material)
LAYER 7	Core 0.006" 1.0oz / 1.0oz Layer 6 & 7
LAYER 8	FR-370HR Pre-preg 0.011" (material)
	Copper Foil 0.5oz / Plate to 1.0oz min Layer 8

18



UNLESS OTHERWISE SPECIFIED DIMENSIONS ARE IN INCHES TOLERANCES ARE: FRACTIONS DECIMALS ANGLES				CONTRACT NO.		TEXAS INSTRUMENTS INC.	
+/- .005				APPROVALS		DATE	
				DRAWN L. NGUYEN		09-01-11	
MATERIAL				ENGR. K. KUSA		FABRICATION DRAWING TSW30H/SH84EYM	
SEE NOTE 5							
FINISH				SIZE			
SEE NOTES 7, 8, 9				CODE IDENT NO. DRAWING NO.			
DO NOT SCALE DRAWING				B			
				SCALE NONE 1			
				SHEET 1 OF 1			
				REV. C			