

(ADC32J4X Channel A)
ADC34J4X
Channel A and D Input
Sheet 2

(ADC32J4X Channel B)
ADC34J4X
Channel B and C Input
Sheet 3

ADC32J4X / ADC34J4X
Sheet 4

AMPLIFIER
Sheet 5

LMK04828
Clock Input
Sheet 6

LMK04828
Inputs & Outputs
Sheet 7

LMK04828
Power & Config
Sheet 8

FMC Connector
Sheet 9

POWER SUPPLY
Sheet 10

POWER SUPPLY
Sheet 11

USB Interface
Sheet 12

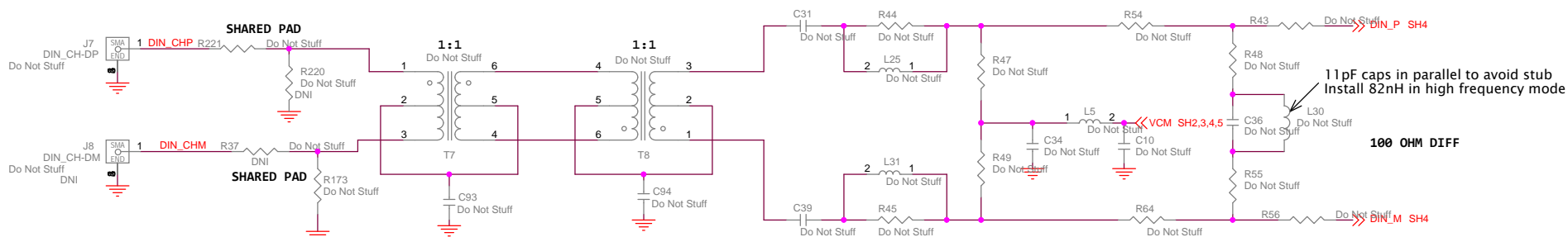
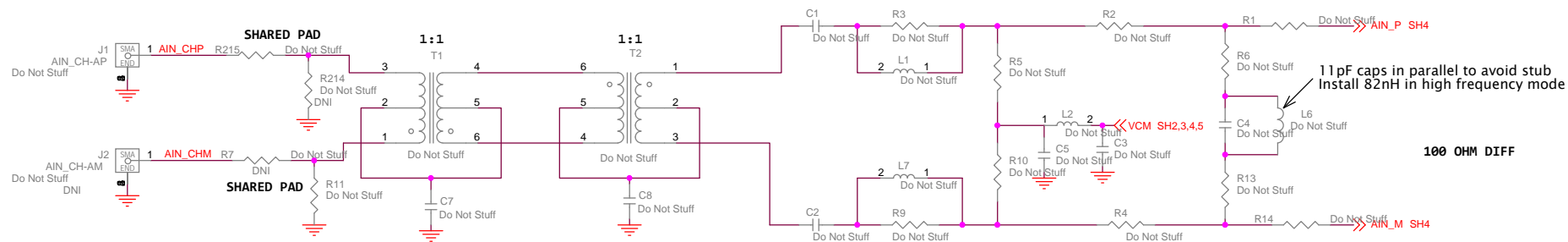


TEXAS INSTRUMENTS

Title ADC32JXX/ADC34JXX		
Size B	Document Number ADC3XJXX EVM	Rev C
Date: Tuesday, July 08, 2014		
Sheet 1 of 12		

Engineer: Chan Ken
PCB: Kim Le

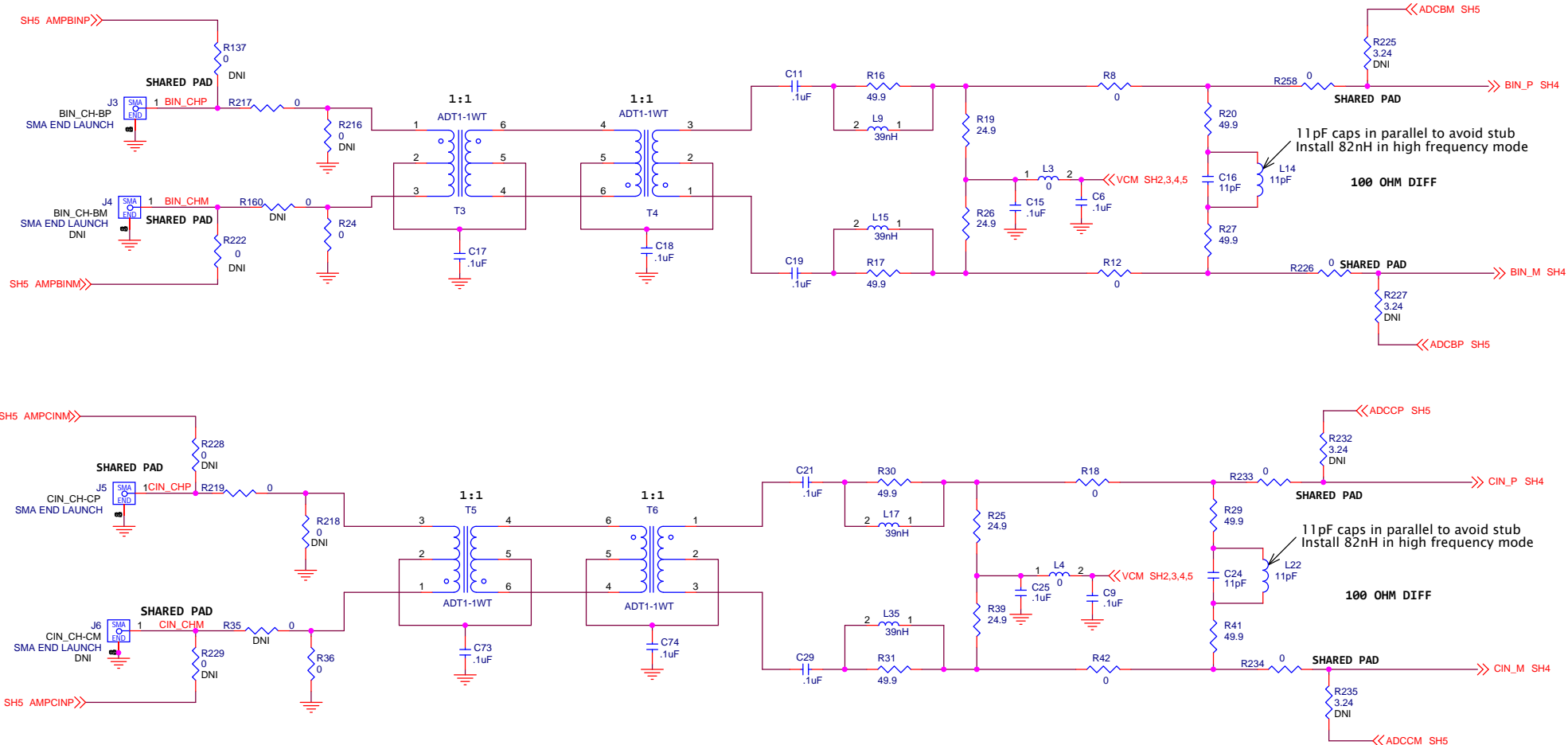
DNI this page for ADC32JXX



ADC34J4X CHANNEL A, D INPUT



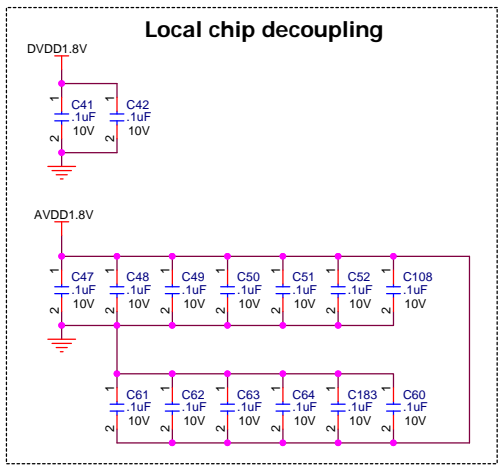
Title		
Size B	Document Number	Rev C
ADC3XJXX EVM		
Date:	Monday, July 07, 2014	Sheet 2 of 12



ADC34J4X CHANNEL B, C INPUT
ADC32J4X CHANNEL A, B INPUT

TEXAS INSTRUMENTS

Title		
Size B	Document Number ADC3XJXX EVM	Rev C
Date: Monday, July 07, 2014	Sheet 3 of 12	

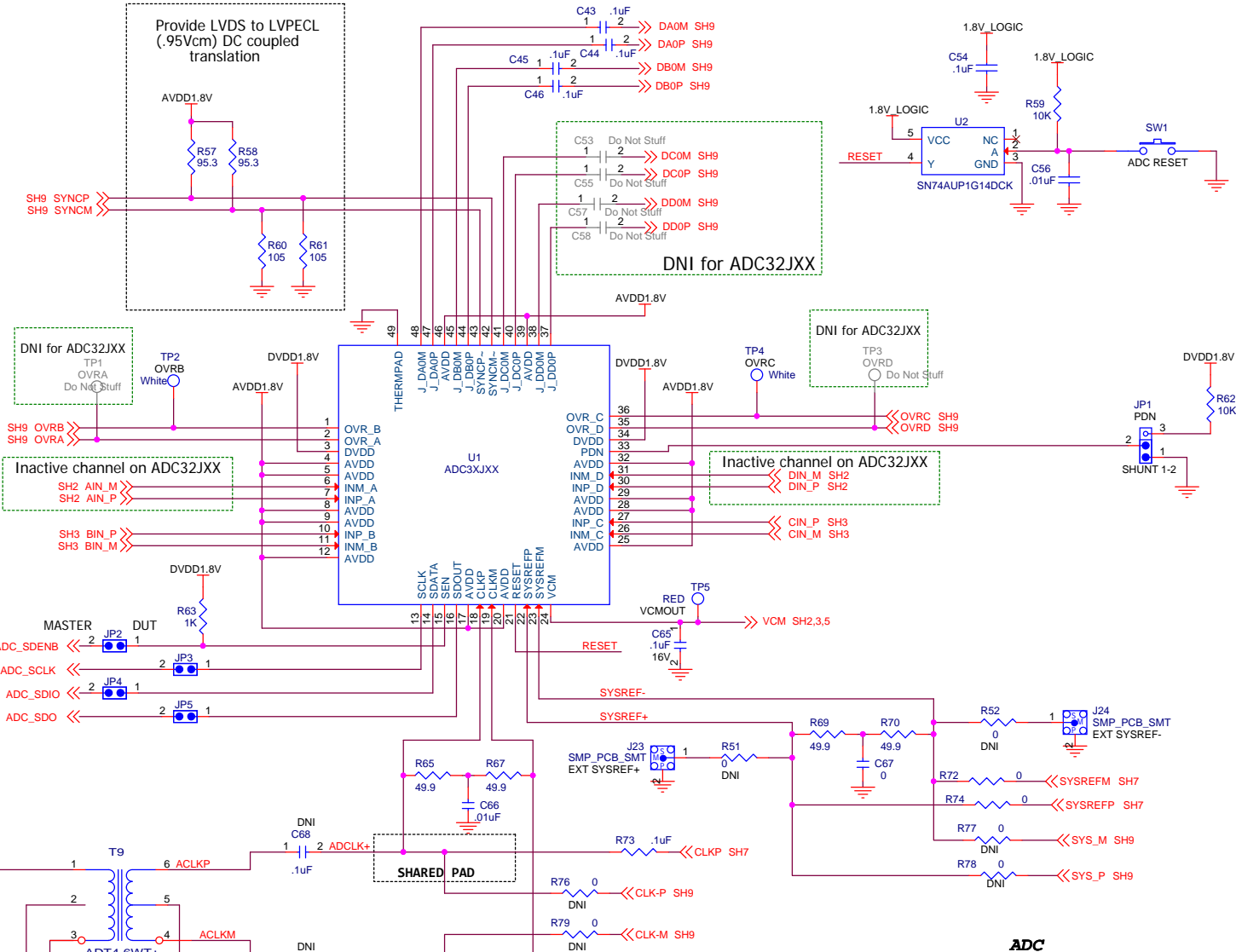
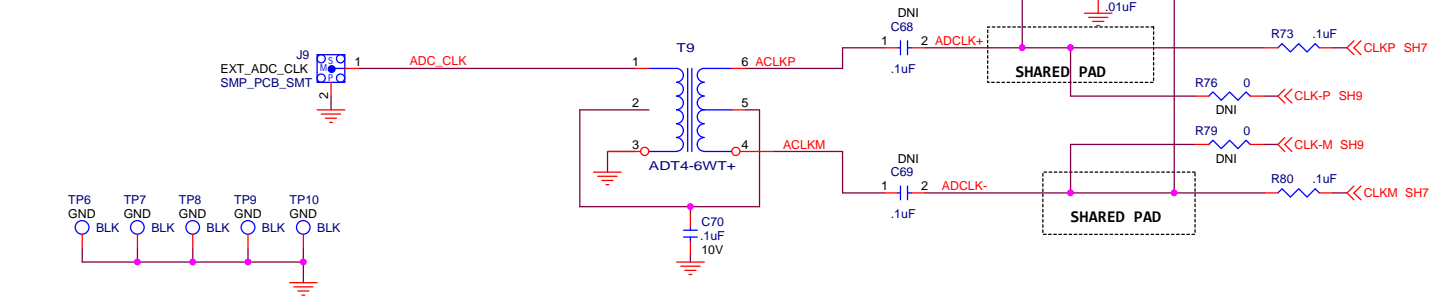


ADC CLK

	LVPECL AC (default):	LCPECL	XFMR
R200, R201 (sh6)	0 ohm	7.5 ohm	
R204, R205 (sh6)	240 ohm	DNI	
R65, R67	50 ohm	50 ohm	100 ohm
R76, R79	DNI	DNI	DNI
R73, R80	0.1uF	0 ohm	DNI
C68, C69	DNI	DNI	0.1uF
C66	0.1uF	DNI	0.1uF

ADC SYSREF

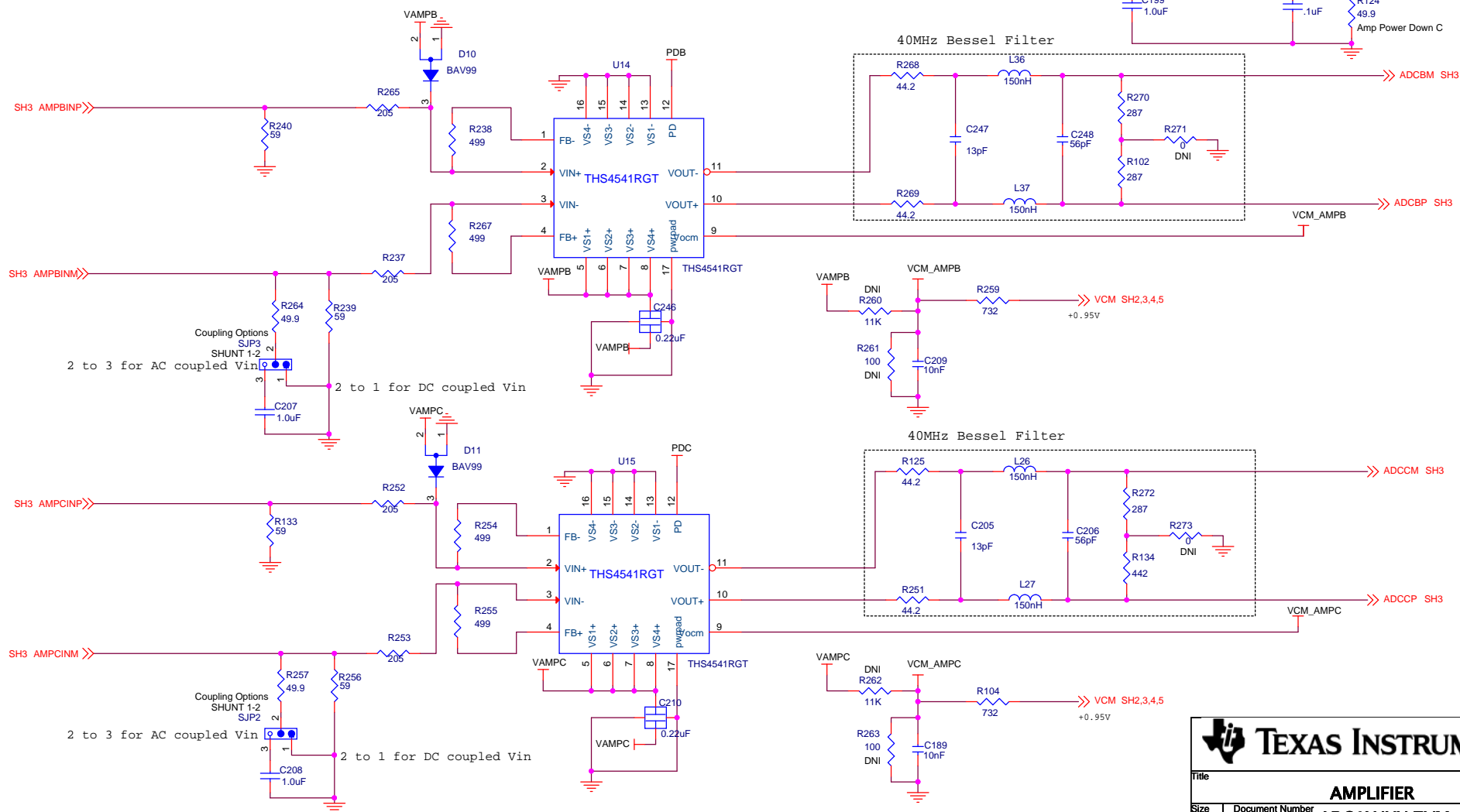
	LVPECL AC	LCPECL (default):
R202, R203 (sh6)	0 ohm	7.5 ohm
R106, R107 (sh6)	240 ohm	DNI
R69, R70	50 ohm	50 ohm
R77, R78	DNI	DNI
R72, R74	0.1uF	0 ohm
C67	0.1uF	0 ohm



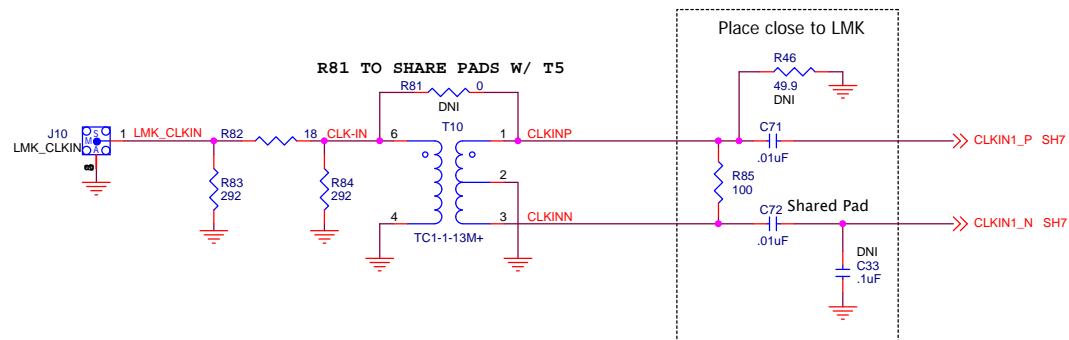
TEXAS INSTRUMENTS

Title		
Size B	Document Number ADC3JXX EVB	Rev C
Date: Monday, July 07, 2014	Sheet 4 of 12	

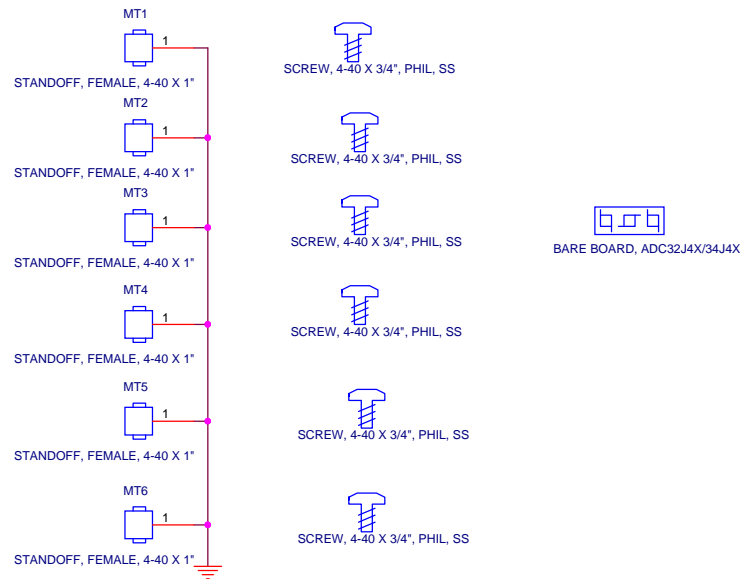
DNI THIS PAGE FOR ADC34JXXEVM




Title			
AMPLIFIER			
Size	Document Number		Rev
B	ADC3XJXX EVM		C
Date:	Monday, July 07, 2014	Sheet	5 of 12

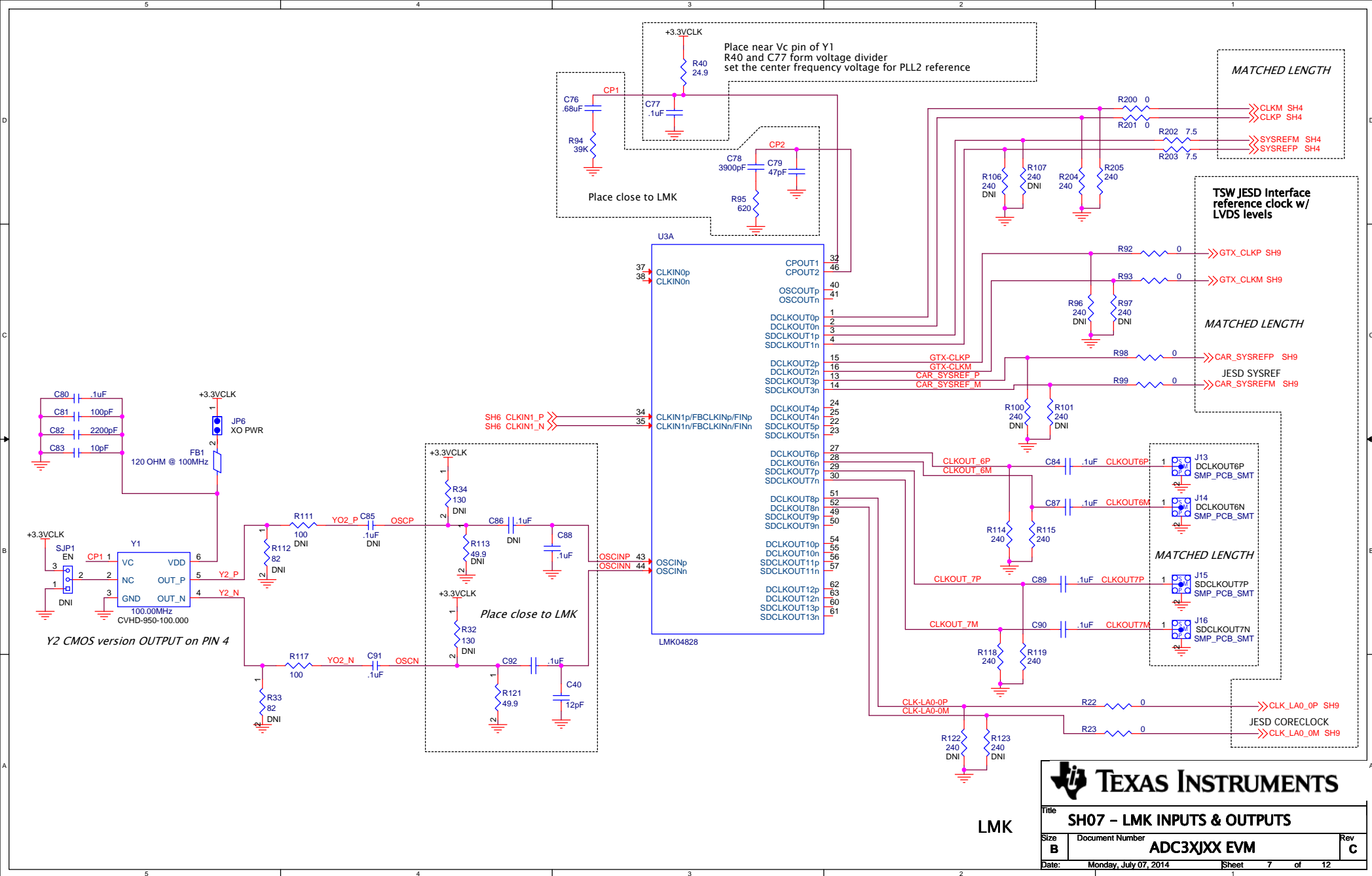


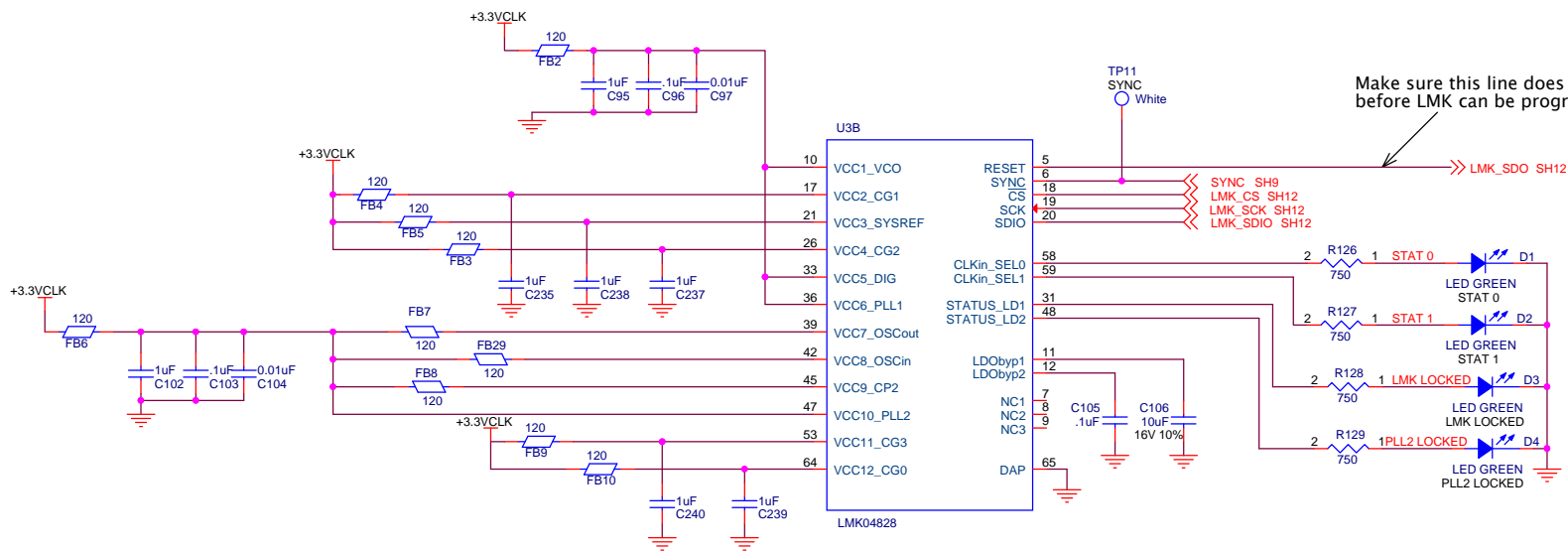
MECHANICAL PARTS



CLOCK INPUT

 TEXAS INSTRUMENTS		
Title SH06 - CLOCK INPUT		
Size B	Document Number ADC3XJXX EVM	Rev C
Date: Monday, July 07, 2014	Sheet 6 of 12	

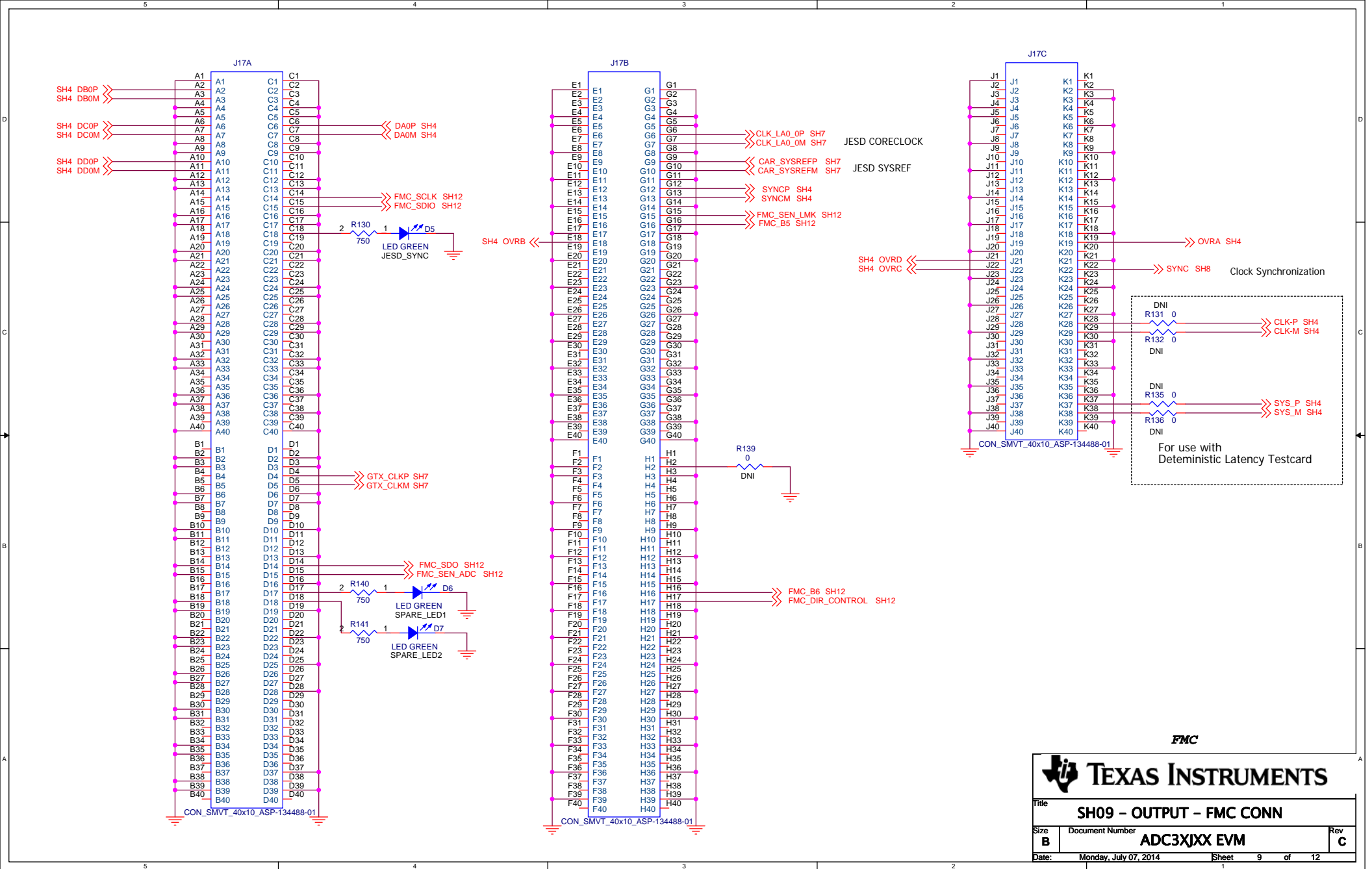




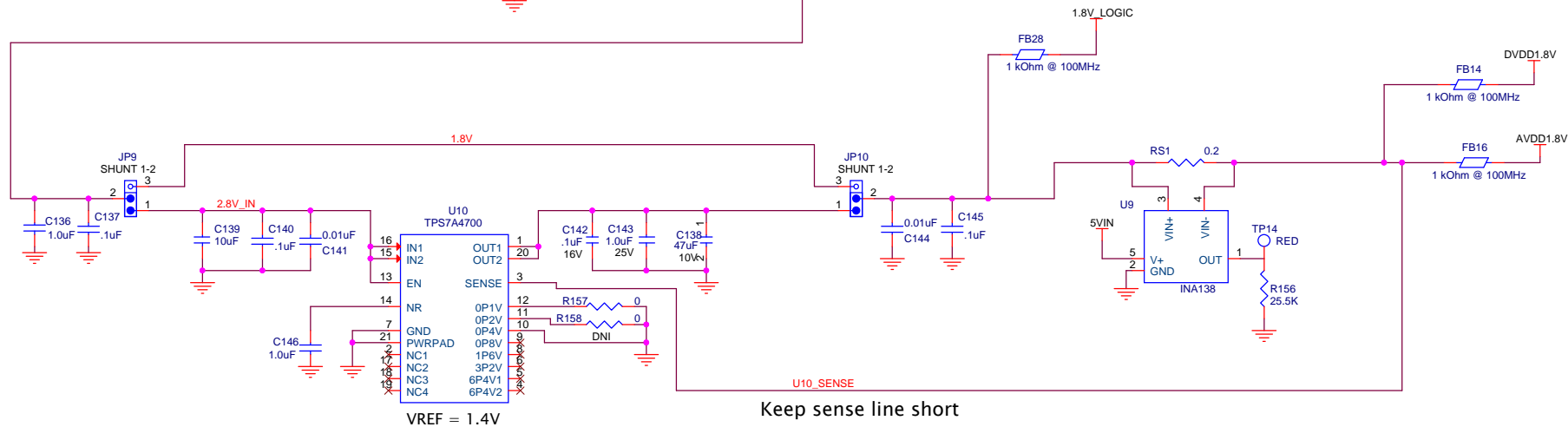
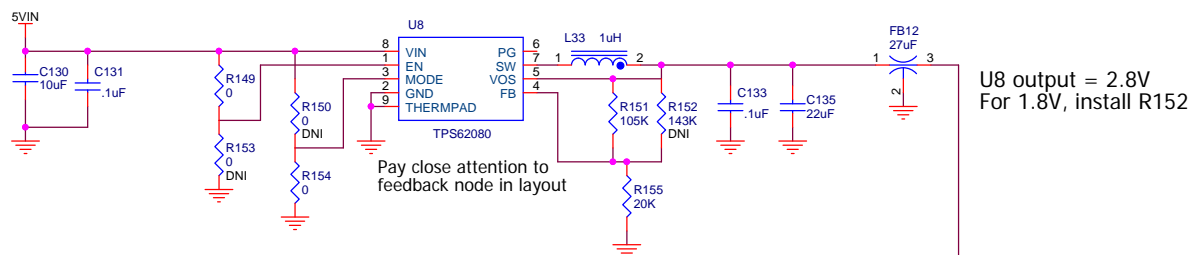
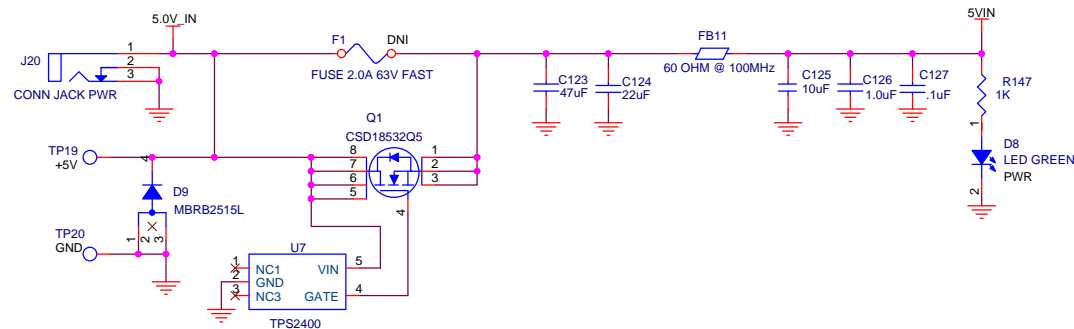
LMK

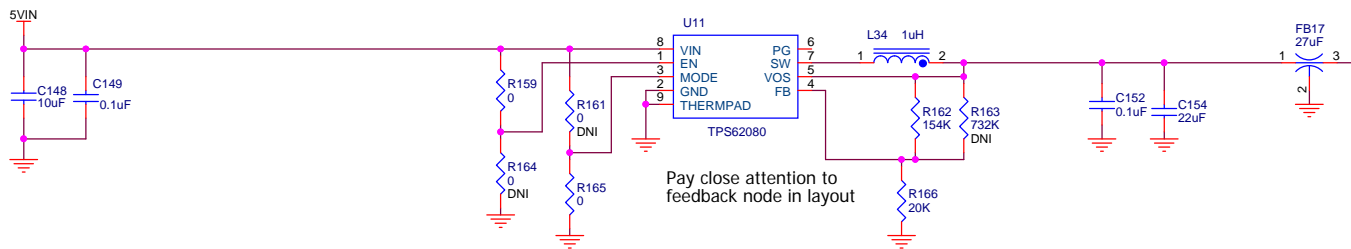


Title		
SH08 - LMK POWER & CONF		
Size	Document Number	Rev
B	ADC3XJXX EVM	C
Date:	Monday, July 07, 2014	
	Sheet	8 of 12

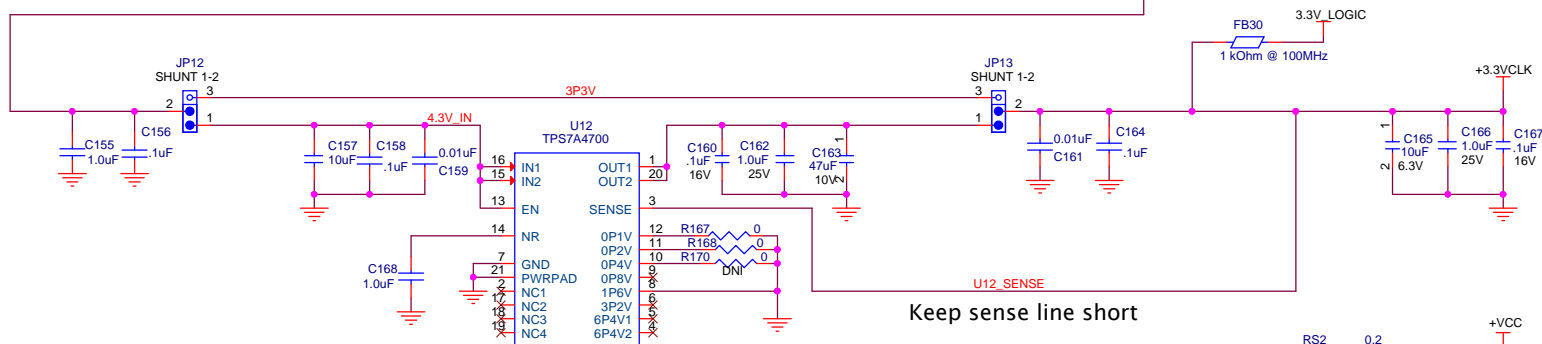


Title		
SH09 - OUTPUT - FMC CONN		
Size	Document Number	Rev
B	ADC3XJXX EVM	C
Date:	Monday, July 07, 2014	Sheet 9 of 12

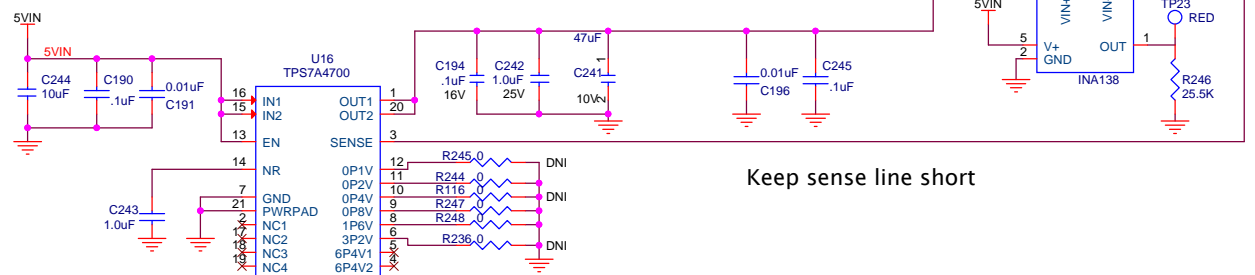




U11 output = 4.0V
For 3.3V, install R163



Keep sense line short



Keep sense line short

Default output is $1.4V + 0.2 + 0.8 + 1.6 = 4V$

3.3V

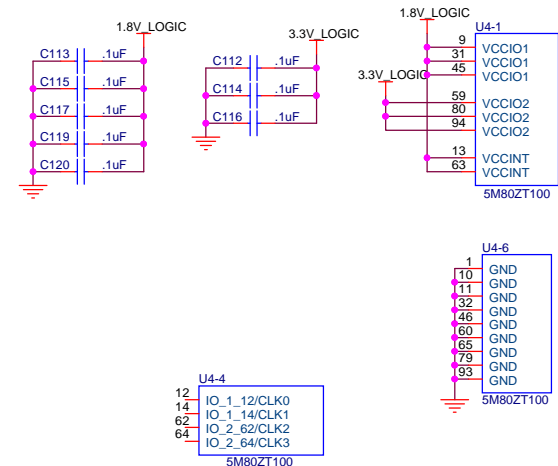
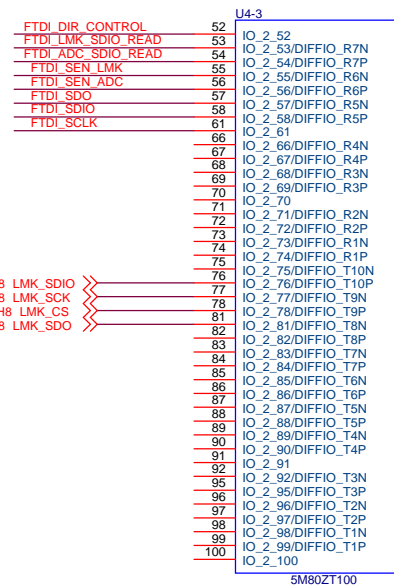
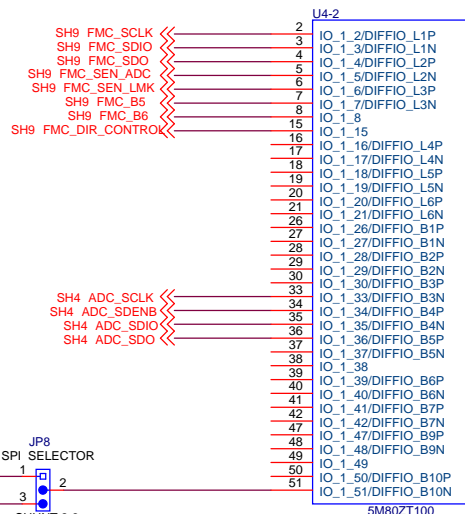
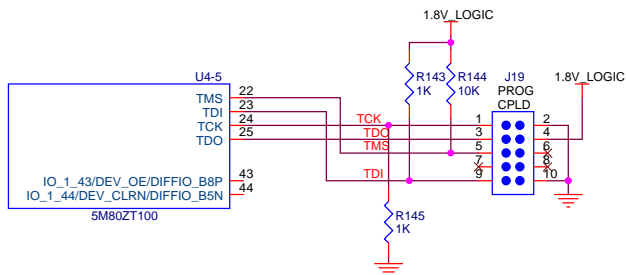
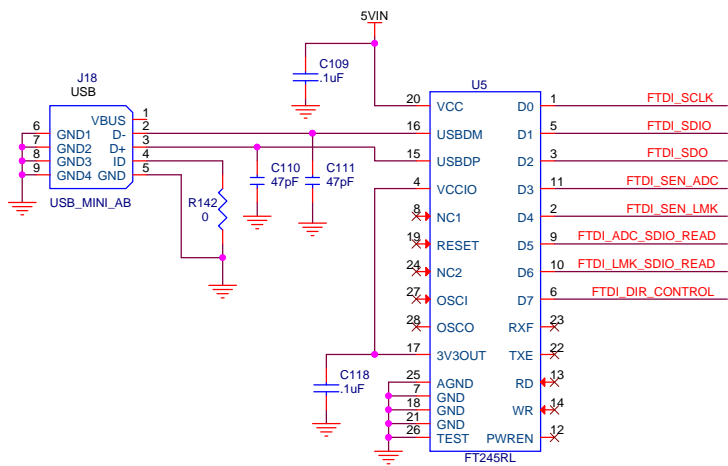
DNI = DO NOT INSTALL

TEXAS INSTRUMENTS

Title: **SH11 - POWER SUPPLIES**

Size: **B** Document Number: **ADC3XJXX EVM** Rev: **C**

Date: **Monday, July 07, 2014** Sheet: **11** of **12**



USB INTERFACE



Title		
SH12 - USB INTERFACE		
Size	Document Number	Rev
B	ADC3XJXX EVM	C
Date:	Monday, July 07, 2014	Sheet 12 of 12