

# NOTES:

- 1) DNI = DO NOT INSTALL

**TEXAS INSTRUMENTS**

Title

TSW30H8X EVM

Drawn: L. Nguyen

Engineer: K. Hsia

Size B

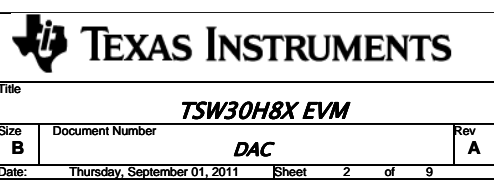
Document Number

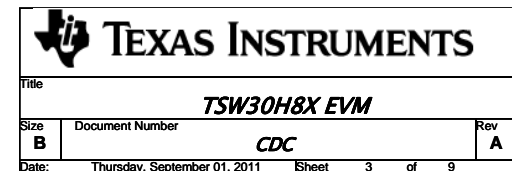
DAC

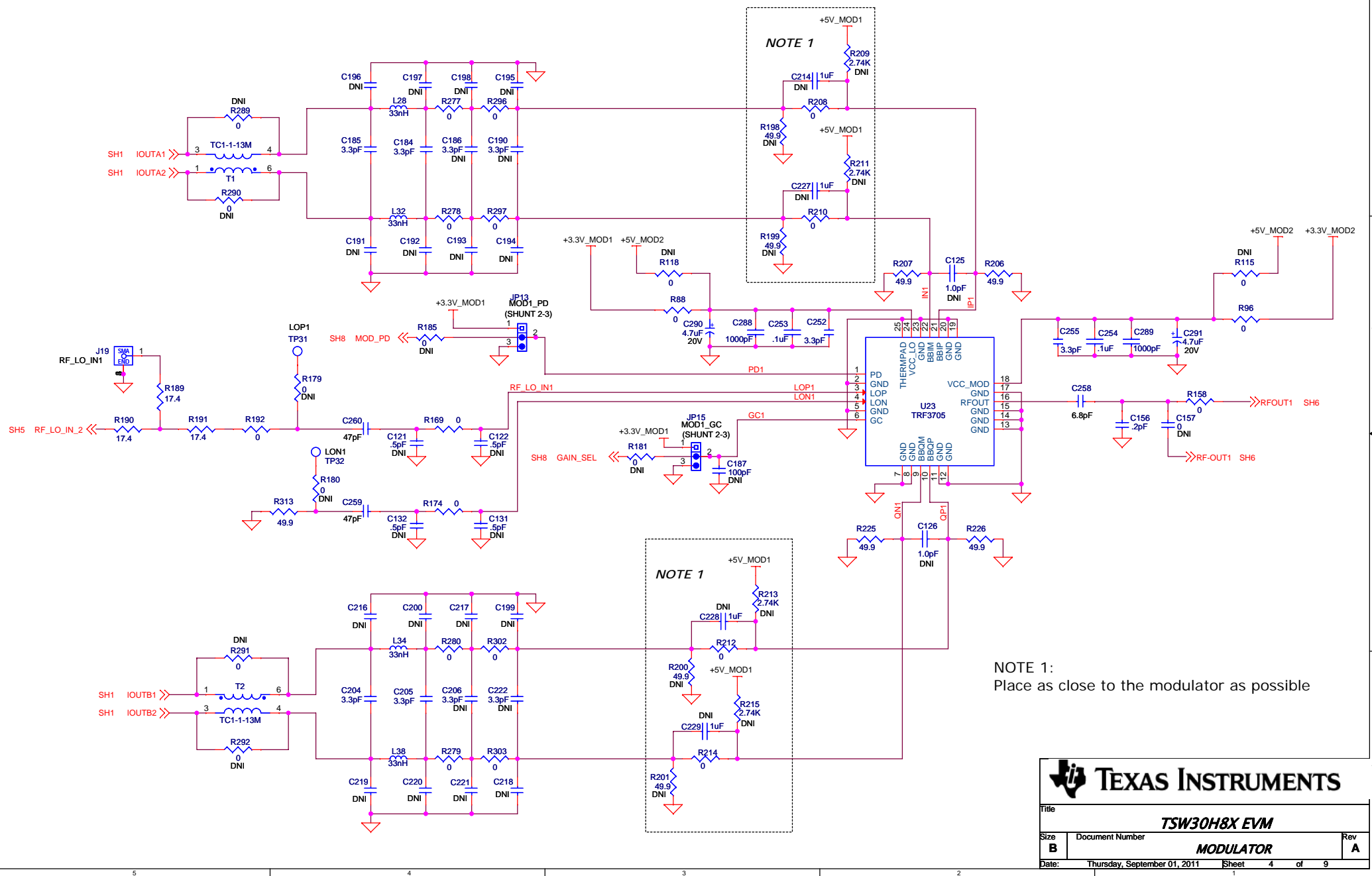
Rev A

Date: Thursday, September 01, 2011


Sheet 1 of 9



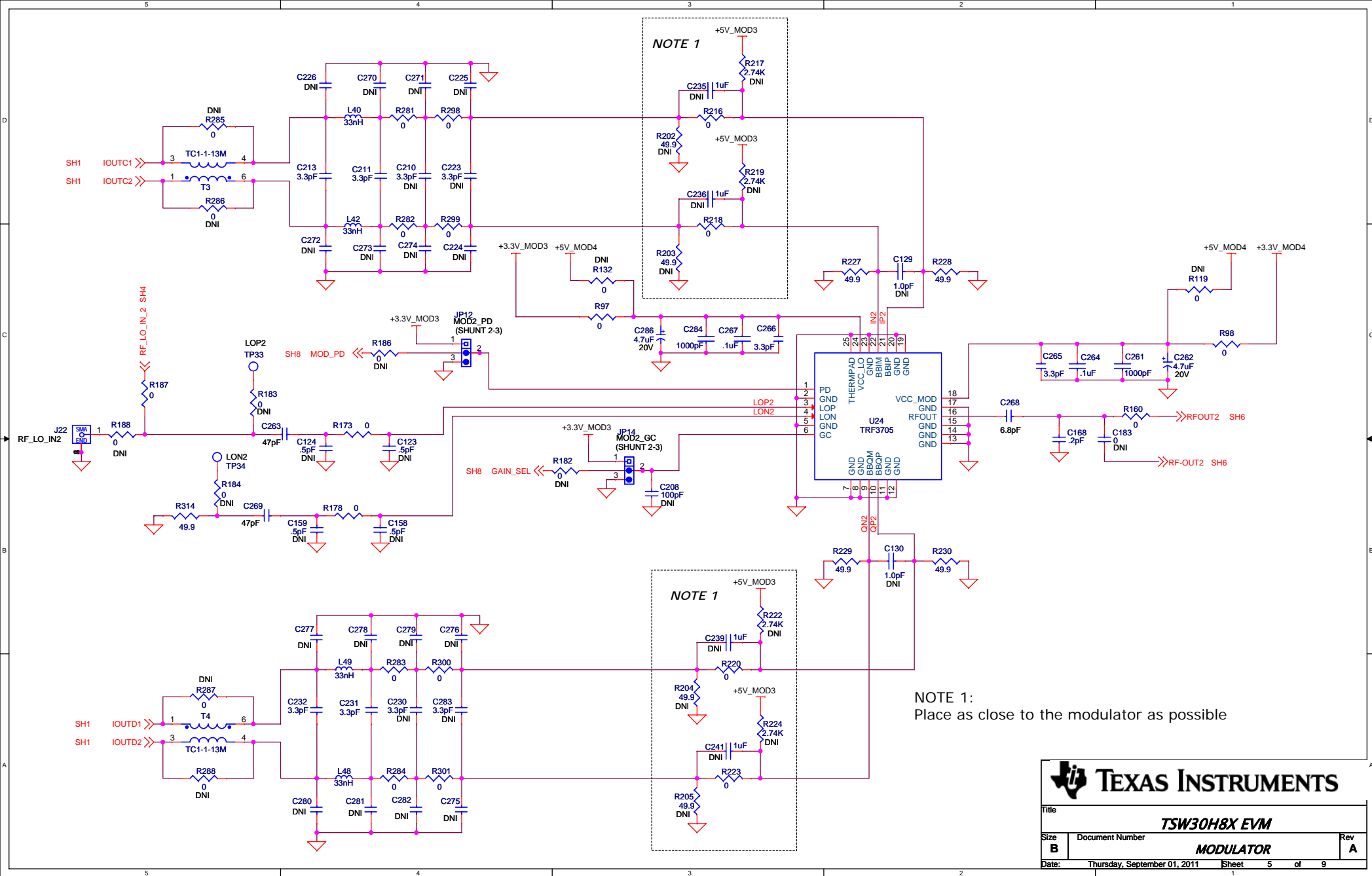




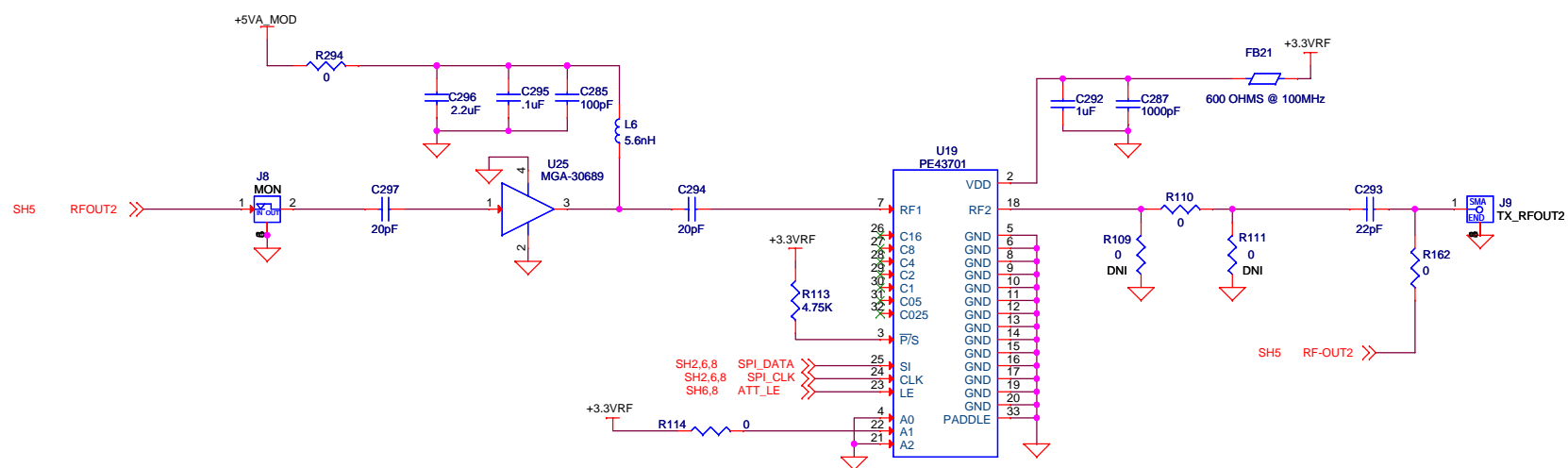
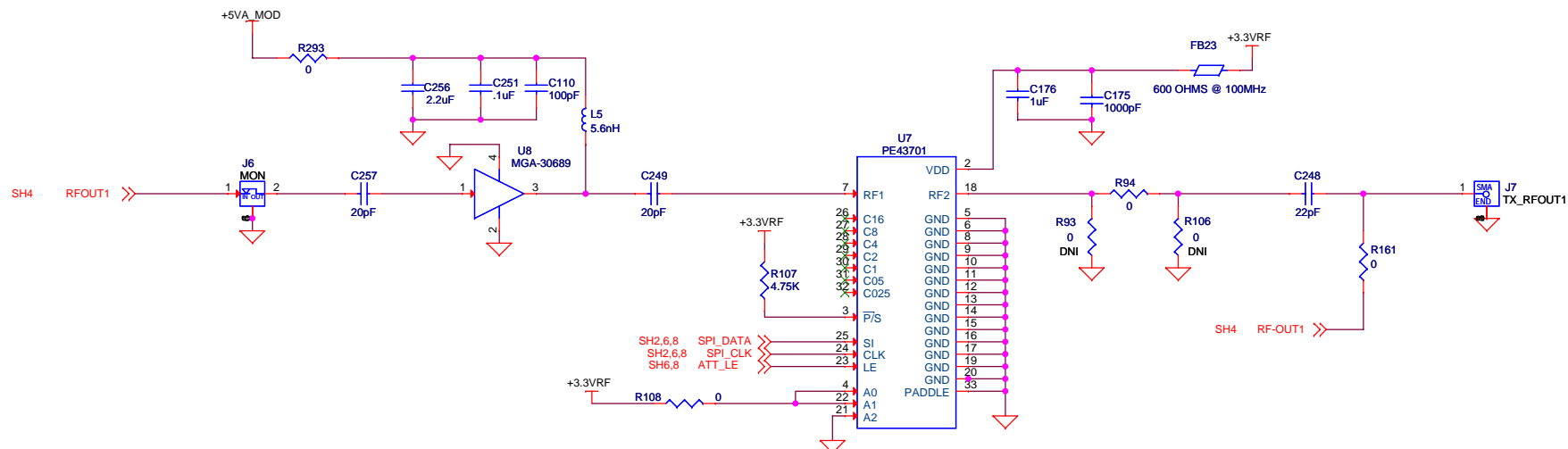
NOTE 1:  
Place as close to the modulator as possible

**TEXAS INSTRUMENTS**

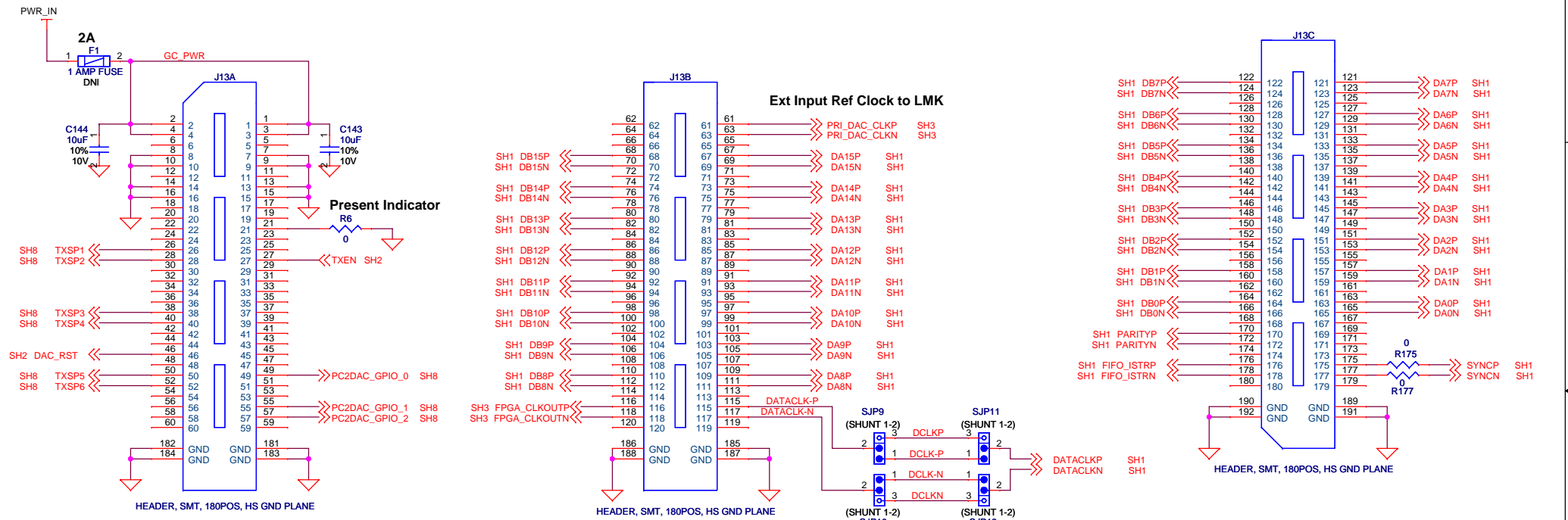
Title		
TSW30H8X EVM		
Size	Document Number	Rev
B	MODULATOR	A
Date:	Thursday, September 01, 2011	Sheet 4 of 9



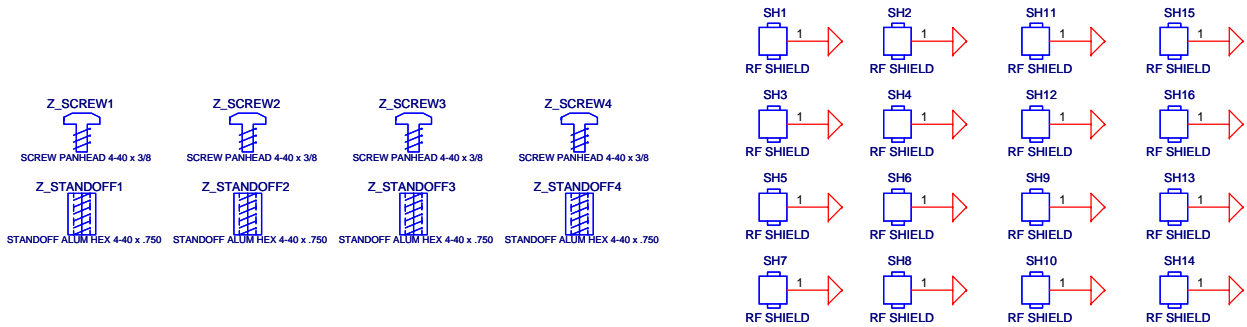
Title		
<b>TSW30H8X EVM</b>		
Size	Document Number	Rev
<b>B</b>	<b>MODULATOR</b>	<b>A</b>
Date:	Thursday, September 01, 2011	Sheet 5 of 9




Title		
TSW30H8X EVM		
Size	Document Number	Rev
B	TX AMPLIFIER AND ATTENUATORS	A
Date:	Thursday, September 01, 2011	Sheet 6 of 9



\*\*\*DCLKP/N are topside traces  
DCLKP/N traces on the bottom side of board are 2" longer than  
DCLK-P/N traces on top side.





TEXAS INSTRUMENTS

Title

Size B

Document Number

Date: Thursday, September 01, 2011

Sheet 7 of 9

Rev A

TSW30H8X EVM

INTERFACE

