

XTR105 具有传感器激励和线性化的 4mA 至 20mA 电流变送器

1 特性

- 低未调整误差
- 两个精准电流源：每个 800 μ A
- 线性化
- 2 线制或者 3 线制 RTD 操作
- 低温漂：0.4 μ V/ $^{\circ}$ C
- 低输出电流噪声：30nA_{pp}
- 高 PSR：110dB (最小值)
- 高 CMR：86dB (最小值)
- 宽电源电压范围：7.5V 至 36V
- 封装：DIP-14 和 SO-14

2 应用

- 现场变送器和传感器
- 工厂自动化
- 与 HART 调制解调器兼容
- 温度和压力传感器
- 工业过程控制
- SCADA 远程数据采集
- 2 线 4mA 至 20mA 电流环
- 电压转电流放大器

3 说明

XTR105 是一款带有两个精准电流源的单片 4mA 至 20mA、2 线制电流发送器。该器件在一个单集成电路上提供针对铂 RTD 温度传感器和桥、仪表放大器以及电流输出电路的完整电流激励。

多用途线性化电流提供一个对 RTD 的第二阶修正，通常可以实现一个 40:1 的线性改进。

仪器放大器增益可针对宽范围的温度或者压力测量进行配置。整个电流发送器的总体未调整误差足够低以允许在未经调整的情况下用于很多应用。这包括零输出电流漂移，和非线性。XTR105 在低至 7.5V 的环路电源电压上运行。

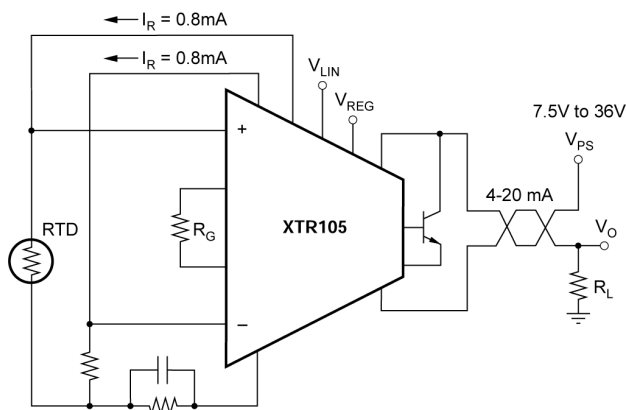
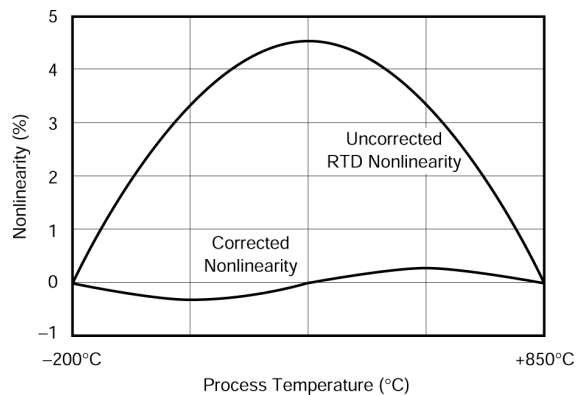
XTR105 采用 DIP-14 和 SO-14 表面贴装型封装，工业温度范围为 -40 $^{\circ}$ C 至 +85 $^{\circ}$ C。

封装信息

| 器件型号 | 封装 ⁽¹⁾ | 封装尺寸 ⁽²⁾ |
|--------|-------------------|---------------------|
| XTR105 | D (SOIC, 14) | 8.65mm × 6mm |
| | N (PDIP, 14) | 19.3mm × 9.4mm |

(1) 有关更多信息，请参阅节 10。

(2) 封装尺寸 (长 × 宽) 为标称值，并包括引脚 (如适用)



使用 XTR105 进行 Pt100 非线性校正



Table of Contents

| | | | |
|---|-----------|--|-----------|
| 1 特性 | 1 | 7 Application and Implementation | 15 |
| 2 应用 | 1 | 7.1 Application Information..... | 15 |
| 3 说明 | 1 | 7.2 Typical Applications..... | 23 |
| 4 Pin Configuration and Functions | 3 | 7.3 Layout..... | 24 |
| 5 Specifications | 4 | 8 Device and Documentation Support | 25 |
| 5.1 Absolute Maximum Ratings ⁽¹⁾ | 4 | 8.1 Documentation Support..... | 25 |
| 5.2 Recommended Operating Conditions..... | 4 | 8.2 接收文档更新通知..... | 25 |
| 5.3 Thermal Information..... | 4 | 8.3 支持资源..... | 25 |
| 5.4 Electrical Characteristics..... | 5 | 8.4 Trademarks..... | 25 |
| 5.5 Typical Characteristics..... | 7 | 8.5 静电放电警告..... | 25 |
| 6 Detailed Description | 10 | 8.6 术语表..... | 25 |
| 6.1 Overview..... | 10 | 9 Revision History | 25 |
| 6.2 Functional Block Diagram..... | 11 | 10 Mechanical, Packaging, and Orderable Information | 26 |
| 6.3 Feature Description..... | 11 | | |
| 6.4 Device Functional Modes..... | 14 | | |

4 Pin Configuration and Functions

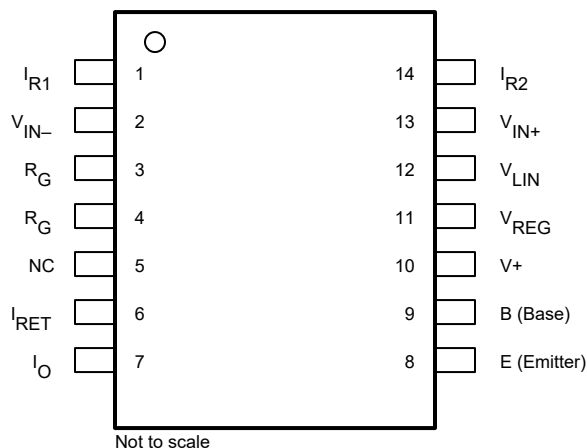


图 4-1. D Package, 14-Pin SOIC, and N Package, 14-Pin PDIP (Top View)

表 4-1. Pin Functions

| PIN | | TYPE | DESCRIPTION |
|------------------|------|--------|---|
| NAME | NO. | | |
| B (Base) | 9 | Output | Base connection for external transistor |
| E (Emitter) | 8 | Input | Emitter connection for external transistor |
| I _O | 7 | Output | Regulated 4mA to 20mA current loop output |
| I _{R1} | 1 | Output | 800μA reference current output, channel 1 |
| I _{R2} | 14 | Output | 800μA reference current output, channel 2 |
| I _{RET} | 6 | Input | Local ground return pin for V _{REG} , V _{LIN} , I _{R1} , and I _{R2} |
| NC | 5 | — | Not internally connected |
| R _G | 3, 4 | — | Input stage gain setting pins. The resistance R _G between pins 3 and 4 sets the gain of the voltage-to-current transfer function |
| V+ | 10 | Power | Loop power supply |
| V _{IN-} | 2 | Input | Negative (inverting) differential voltage input |
| V _{IN+} | 13 | Input | Positive (noninverting) differential voltage input |
| V _{LIN} | 12 | Output | Linearity correction voltage output |
| V _{REG} | 11 | Output | 5.1V regulator voltage output |

5 Specifications

5.1 Absolute Maximum Ratings ⁽¹⁾

| | | MIN | MAX | UNIT |
|------------------|---|------|------------|------|
| V+ | Power supply (referenced to the I _O pin) | | 40 | V |
| V _{IN} | Input voltage, V _{IN+} – V _{IN-} (referenced to the I _O pin) | 0 | V+ | V |
| | Output current limit | | Continuous | |
| T _A | Operating temperature | – 40 | 125 | °C |
| T _J | Junction temperature | | 165 | °C |
| T _{stg} | Storage temperature | – 55 | 125 | °C |
| | Lead temperature (soldering, 10s) | | 300 | °C |

- (1) Operation outside the *Absolute Maximum Ratings* may cause permanent device damage. *Absolute Maximum Ratings* do not imply functional operation of the device at these or any other conditions beyond those listed under *Recommended Operating Conditions*. If used outside the *Recommended Operating Conditions* but within the *Absolute Maximum Ratings*, the device may not be fully functional, and this may affect device reliability, functionality, performance, and shorten the device lifetime.

5.2 Recommended Operating Conditions

over operating free-air temperature range (unless otherwise noted)

| | | MIN | NOM | MAX | UNIT |
|----------------|---|-----|-----|-----|------|
| V+ | Power supply (referenced to the I _O pin) | 7.5 | 24 | 36 | V |
| T _A | Specified temperature | –40 | | 85 | °C |

5.3 Thermal Information

| THERMAL METRICS ⁽¹⁾ | | XTR105 | | UNIT |
|--------------------------------|--|----------|----------|------|
| | | D (SOIC) | N (PDIP) | |
| | | 14 PINS | | |
| R _{θJA} | Junction-to-ambient thermal resistance | 87.3 | 54.4 | °C/W |
| R _{θJC(top)} | Junction-to-case (top) thermal resistance | 47.3 | 31.4 | °C/W |
| R _{θJB} | Junction-to-board thermal resistance | 46.6 | 25.8 | °C/W |
| ψ _{JT} | Junction-to-top characterization parameter | 9.9 | 9.6 | °C/W |
| ψ _{JB} | Junction-to-board characterization parameter | 46.1 | 25.3 | °C/W |
| R _{θJC(bot)} | Junction-to-case (bottom) thermal resistance | N/A | N/A | °C/W |

- (1) For more information about traditional and new thermal metrics, see the [Semiconductor and IC package thermal metrics](#) application note.

5.4 Electrical Characteristics

at $T_A = +25^\circ\text{C}$, $V_+ = 24\text{V}$, and TIP29C external transistor (unless otherwise noted)

| PARAMETER | TEST CONDITIONS | | MIN | TYP | MAX | UNITS |
|--|--|--------------------|---|-----------------------|------|-------------------|
| OUTPUT | | | | | | |
| Output current equation | V _{IN} in volts, R _G in ohms | | I _O = V _{IN} × (40 / R _G) + 4mA | | | |
| Output current, specified range | | | 4 | | 20 | mA |
| Overscale limit | | | 24 | 27 | 30 | mA |
| Underscale limit | I _{REG} = 0V | | 1.8 | 2.2 | 2.6 | mA |
| ZERO OUTPUT ⁽¹⁾ | V _{IN} = 0V, R _G = ∞ | | | 4 | | mA |
| Initial error | XTR105P, XTR105U | | | ±5 | ±25 | μ A |
| | XTR105PA, XTR105UA | | | ±5 | ±50 | |
| vs temperature | T _A = - 40 °C to +85°C | XTR105P, XTR105U | | ±0.07 | ±0.5 | μ A/°C |
| | | XTR105PA, XTR105UA | | ±0.07 | ±0.9 | |
| vs supply voltage, V+ | V+ = 7.5V to 36V | | | 0.04 | 0.2 | μ A/V |
| vs common-mode voltage | V _{CM} = 1.25V to 3.5V ⁽²⁾ | | | 0.02 | | μ A/V |
| vs V _{REG} output current | | | | 0.3 | | μ A/mA |
| Noise, 0.1Hz to 10Hz | | | | 0.03 | | μ A _{PP} |
| SPAN | | | | | | |
| Span equation (transconductance) | | | | S = 40/R _G | | A/V |
| Initial error ⁽³⁾ | Full-scale (V _{IN}) = 50mV | XTR105P, XTR105U | | ±0.05 | ±0.2 | % |
| | | XTR105PA, XTR105UA | | ±0.05 | ±0.4 | |
| vs temperature ⁽³⁾ | T _A = - 40 °C to +85°C | | | ±3 | ±25 | ppm/°C |
| Nonlinearity, ideal input ⁽⁴⁾ | Full-scale (V _{IN}) = 50mV | | | 0.003 | 0.01 | % |
| INPUT ⁽⁵⁾ | | | | | | |
| Offset voltage | V _{CM} = 2V | XTR105P, XTR105U | | ±50 | ±100 | μ V |
| | | XTR105PA, XTR105UA | | ±50 | ±250 | |
| vs temperature | T _A = - 40 °C to +85°C | XTR105P, XTR105U | | ±0.4 | ±1.5 | μ V/°C |
| | | XTR105PA, XTR105UA | | ±0.4 | ±3 | |
| vs supply voltage, V+ | V+ = 7.5V to 36V | | | ±0.3 | ±3 | μ V/V |
| vs common-mode voltage, RTI (CMRR) | V _{CM} = 1.25V to 3.5V ⁽²⁾ | XTR105P, XTR105U | | ±10 | ±50 | μ V/V |
| | | XTR105PA, XTR105UA | | ±10 | ±100 | |
| Common-mode input range ⁽²⁾ | | | 1.25 | | 3.5 | V |
| Input bias current | XTR105P, XTR105U | | | 5 | 25 | nA |
| | XTR105PA, XTR105UA | | | 5 | 50 | |
| vs temperature | T _A = - 40 °C to +85°C | | | 20 | | pA/°C |
| Input offset current | XTR105P, XTR105U | | | ±0.2 | ±3 | nA |
| | XTR105PA, XTR105UA | | | ±0.2 | ±10 | |
| vs temperature | T _A = - 40 °C to +85°C | | | 5 | | pA/°C |
| Impedance, differential | | | | 0.1 1 | | G Ω pF |
| Common-mode | | | | 5 10 | | G Ω pF |
| Noise, 0.1Hz to 10Hz | | | | 0.6 | | μ A _{PP} |

5.4 Electrical Characteristics (续)

at $T_A = +25^\circ\text{C}$, $V_+ = 24\text{V}$, and TIP29C external transistor (unless otherwise noted)

| PARAMETER | TEST CONDITIONS | | MIN | TYP | MAX | UNITS |
|---------------------------------|-----------------------------------|--------------------|----------|------------|------|-------------------|
| CURRENT SOURCES ⁽⁶⁾ | | | | | | |
| Current | | | | 800 | | μ A |
| Accuracy | XTR105P, XTR105U | | | ±0.05 | ±0.2 | % |
| | XTR105PA, XTR105UA | | | ±0.05 | ±0.4 | |
| vs temperature | T _A = - 40 °C to +85°C | XTR105P, XTR105U | | ±15 | ±35 | ppm/°C |
| | | XTR105PA, XTR105UA | | ±15 | ±75 | |
| vs power supply, V+ | V+ = 7.5V to 36V | | | ±10 | ±25 | ppm/V |
| Matching | XTR105P, XTR105U | | | ±0.02 | ±0.1 | % |
| | XTR105PA, XTR105UA | | | ±0.02 | ±0.2 | |
| vs temperature | T _A = - 40 °C to +85°C | XTR105P, XTR105U | | ±3 | ±15 | ppm/°C |
| | | XTR105PA, XTR105UA | | ±3 | ±30 | |
| vs power supply, V+ | V+ = 7.5V to 36V | | | 1 | 10 | ppm/V |
| Compliance voltage | Positive | | (V+) – 3 | (V+) – 2.5 | | V |
| | Negative ⁽²⁾ | | 0 | –0.2 | | |
| Output impedance | | | | 150 | | M Ω |
| Noise, 0.1Hz to 10Hz | | | | 0.003 | | μ A _{PP} |
| V _{REG} ⁽²⁾ | | | | 5.1 | | V |
| Accuracy | | | | ±0.02 | ±0.1 | V |
| vs temperature | T _A = - 40 °C to +85°C | | | ±0.5 | | mV/°C |
| vs supply voltage, V+ | | | | 1 | | mV/V |
| Output current | | | | ±1 | | mA |
| Output impedance | | | | 75 | | Ω |
| LINEARIZATION | | | | | | |
| R _{LIN} (internal) | | | | 1 | | k Ω |
| Accuracy | XTR105P, XTR105U | | | ±0.2 | ±0.5 | % |
| | XTR105PA, XTR105UA | | | ±0.2 | ±1 | |
| vs temperature | T _A = - 40 °C to +85°C | | | ±25 | ±100 | ppm/°C |

(1) Describes accuracy of the 4mA low-scale offset current. Does not include input amplifier effects. Can be trimmed to zero.

(2) Voltage measured with respect to I_{RET} pin.

(3) Does not include initial error or TCR of gain-setting resistor, R_G .

(4) Increasing the full-scale input range improves nonlinearity.

(5) Does not include zero output initial error.

(6) Current source output voltage $V_O = 2\text{V}$, with respect to I_{RET} pin.

5.5 Typical Characteristics

at $T_A = +25^\circ\text{C}$ and $V_+ = 24\text{V}$ (unless otherwise noted)

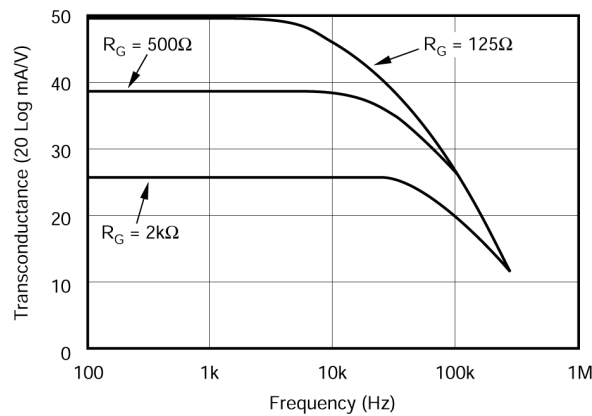


图 5-1. Transconductance vs Frequency

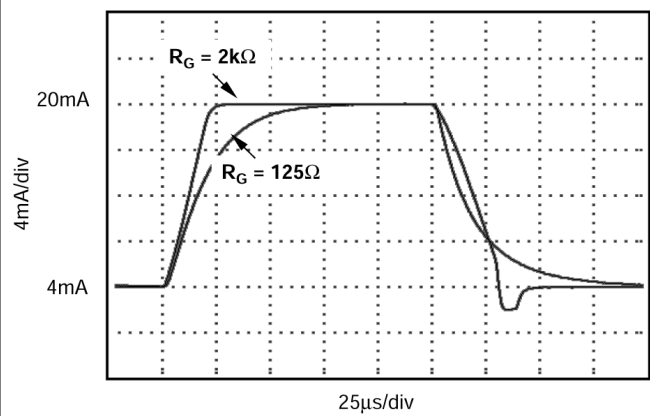


图 5-2. Step Response

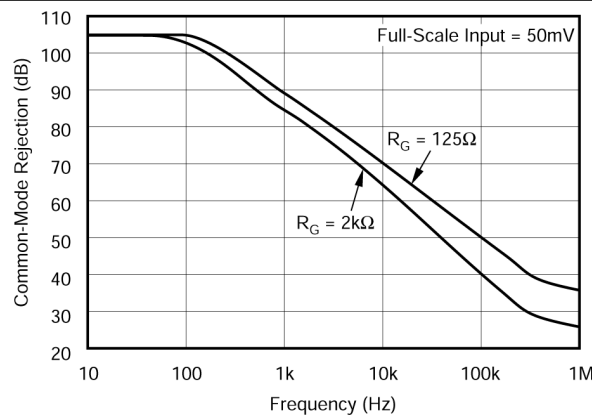


图 5-3. Common-Mode Rejection vs Frequency

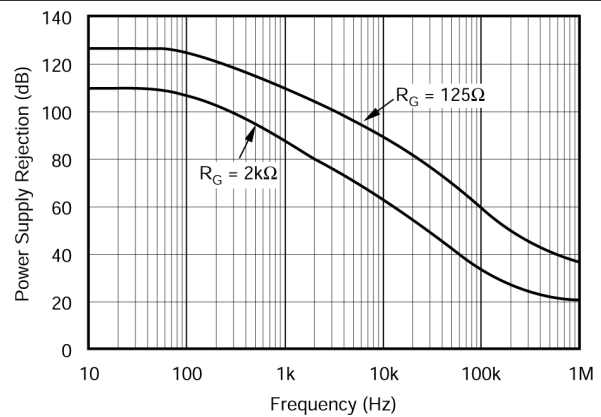


图 5-4. Power-Supply Rejection vs Frequency

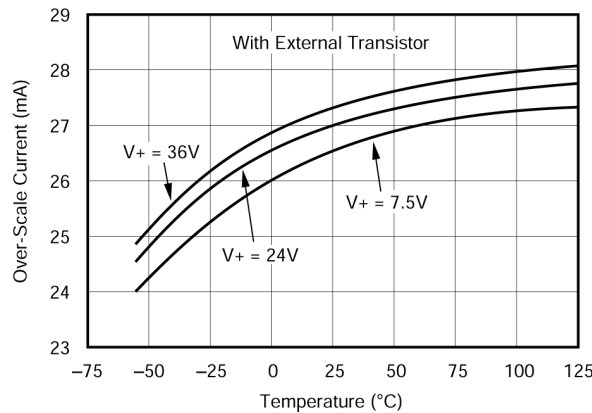


图 5-5. Overscale Current vs Temperature

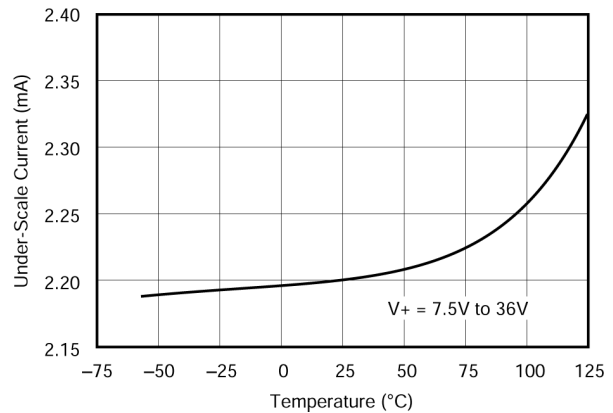


图 5-6. Underscale Current vs Temperature

5.5 Typical Characteristics (continued)

at $T_A = +25^\circ\text{C}$ and $V_+ = 24\text{V}$ (unless otherwise noted)

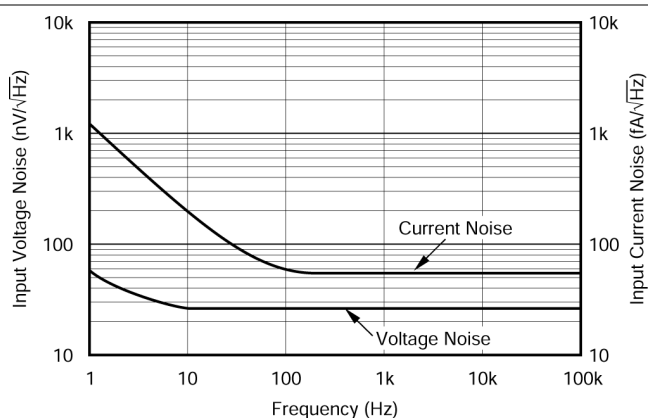


图 5-7. Input Voltage and Current Noise Density vs Frequency

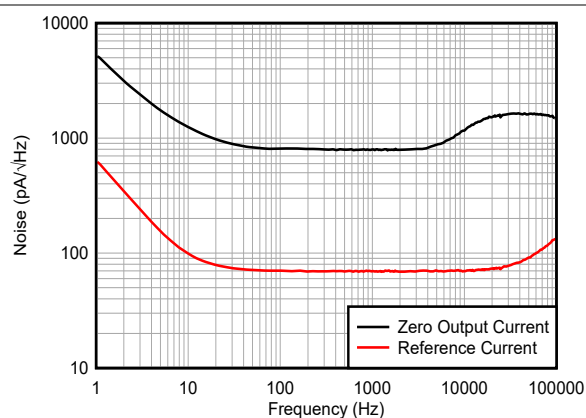


图 5-8. Zero Output and Reference Current Noise vs Frequency

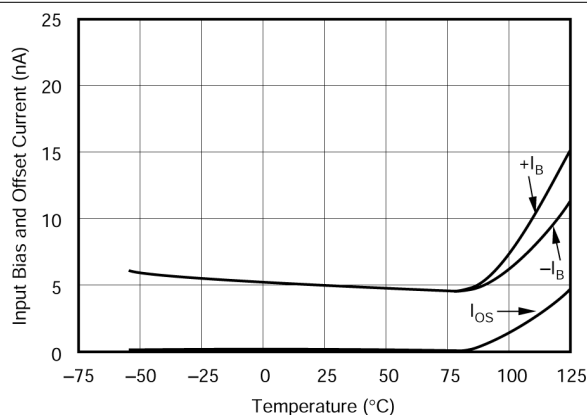


图 5-9. Input Bias and Offset Current vs Temperature

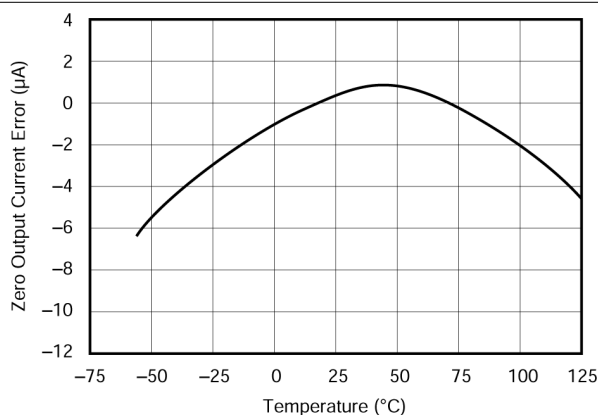


图 5-10. Zero Output Current Error vs Temperature

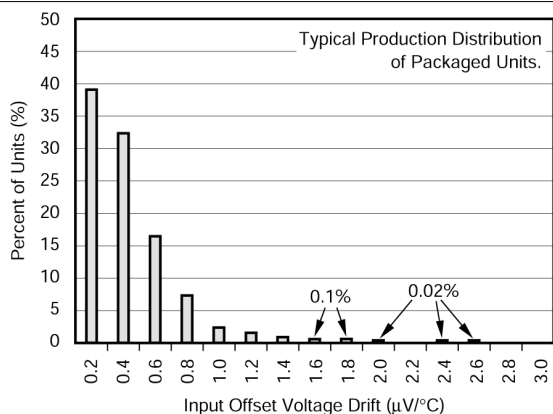


图 5-11. Input Offset Voltage Drift Production Distribution

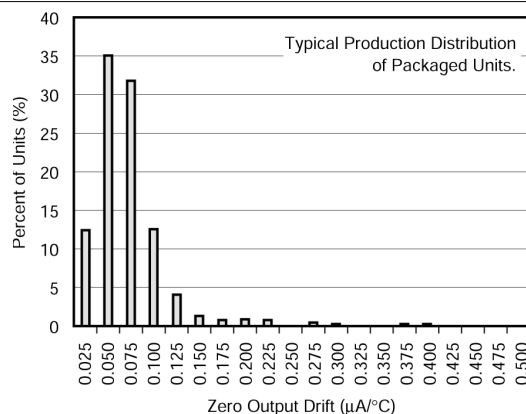


图 5-12. Zero Output Drift Production Distribution

5.5 Typical Characteristics (continued)

at $T_A = +25^\circ\text{C}$ and $V_+ = 24\text{V}$ (unless otherwise noted)

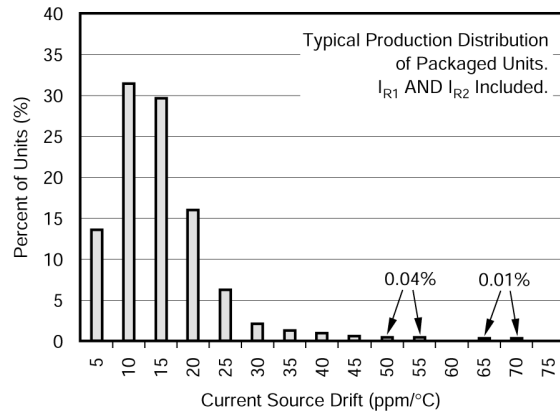


图 5-13. Current Source Drift Production Distribution

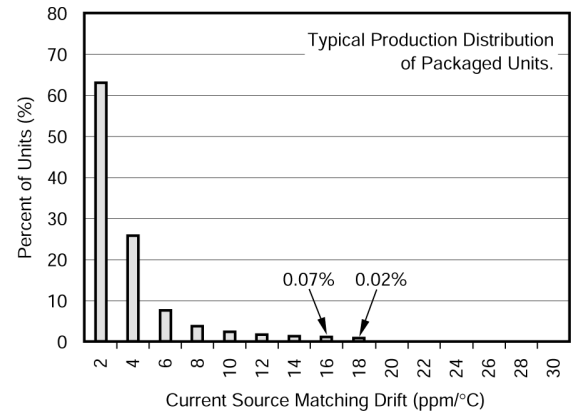


图 5-14. Current Source Matching Drift Production Distribution

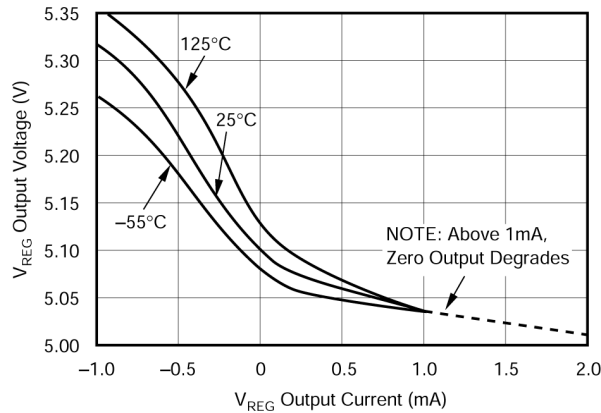


图 5-15. V_{REG} Output Voltage vs V_{REG} Output Current

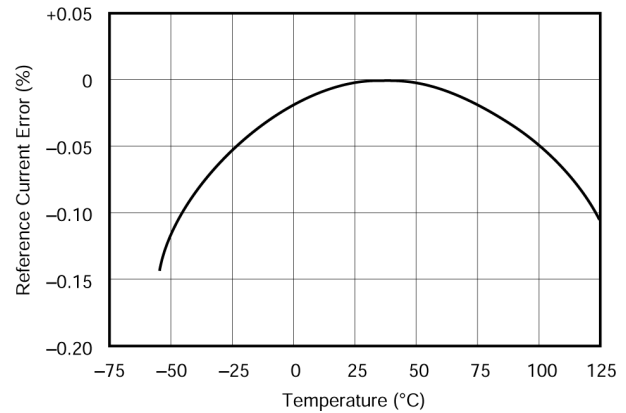


图 5-16. Reference Current Error vs Temperature

6 Detailed Description

6.1 Overview

The XTR105 is a monolithic 4mA-to-20mA, 2-wire current transmitter with a differential voltage input. 图 6-1 shows the simplified schematic of the XTR105. The loop power supply, V_+ , provides power for all circuitry. The output loop current is modulated by the XTR105 and is typically measured as a voltage across a series load resistor (R_L).

The instrumentation amplifier input of the XTR105 measures the voltage difference between the noninverting and inverting inputs. This difference is then gained up according to the value of R_G , and expressed as a regulated current output.

The two matched 0.8mA current sources are typically used to drive an RTD and zero-setting resistor (R_Z). R_Z determines the static offset of the current output and can be adjusted to correct for offset errors. A linearity correction feature is provided to further improve the RTD response. An additional 5.1V voltage regulator output is provided to power external circuitry such as buffer amplifiers.

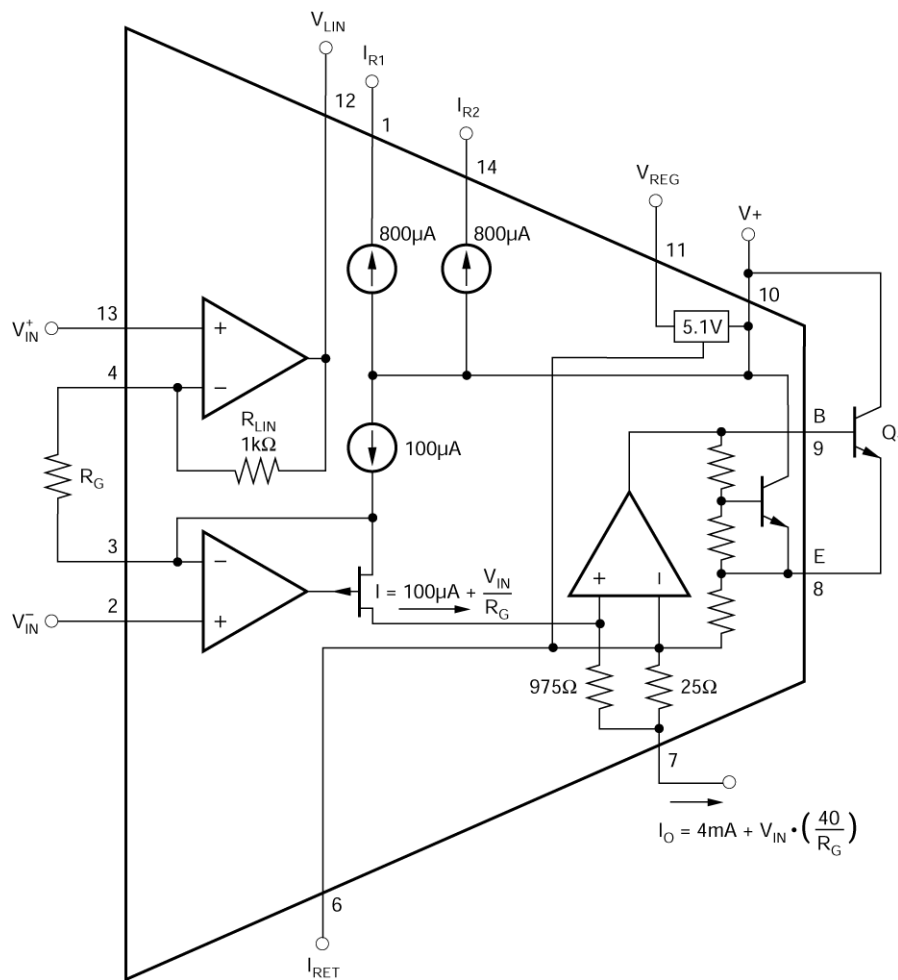
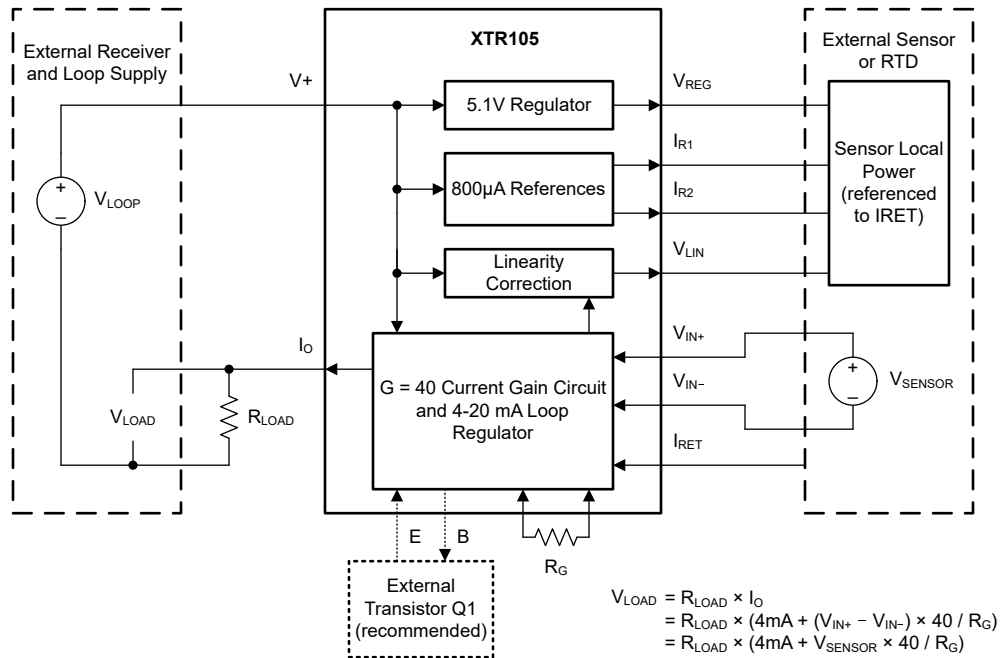


图 6-1. Simplified Schematic

6.2 Functional Block Diagram



6.3 Feature Description

6.3.1 Linearization

RTD temperature sensors are inherently (but predictably) nonlinear. With the addition of one or two external resistors, R_{LIN1} and R_{LIN2} , compensation is possible for most of this nonlinearity by using the V_{LIN} linearity correction feature of the XTR105. This results in a 40:1 improvement in linearity over the uncompensated output.

See [图 7-1](#) for a typical 2-wire RTD application with linearization. Resistor R_{LIN1} provides positive feedback and controls linearity correction. R_{LIN1} is chosen according to the desired temperature range. An equation is given in [图 7-1](#).

In 3-wire RTD connections, an additional resistor, R_{LIN2} , is required. As with the 2-wire RTD application, R_{LIN1} provides positive feedback for linearization. R_{LIN2} provides an offset canceling current to compensate for wiring resistance encountered in remotely located RTDs. R_{LIN1} and R_{LIN2} are chosen such that the currents are equal. This makes the voltage drop in the wiring resistance to the RTD a common-mode signal that is rejected by the XTR105. The nearest standard 1% resistor values for R_{LIN1} and R_{LIN2} are adequate for most applications. [表 7-1](#) provides the 1% resistor values for a 3-wire Pt100 RTD connection.

If no linearity correction is desired, leave the V_{LIN} pin open. With no linearization, $R_G = 2500\text{m} \times V_{FS}$, where V_{FS} = full-scale input range.

6.3.1.1 High-Resistance RTDs

The text and figures thus far have assumed a Pt100 RTD. With higher resistance RTDs, evaluate the temperature range and input voltage variation to maintain proper common-mode biasing of the inputs. As mentioned previously, R_{CM} can be adjusted to provide an additional voltage drop to bias the inputs of the XTR105 within the common-mode input range.

6.3.2 Voltage Regulator

The V_{REG} pin provides an on-chip voltage source of approximately 5.1V and is designed for powering external input circuitry (as shown in 图 6-2). This source is a moderately accurate voltage reference, and is not the same reference used to set the 800 μ A current references. V_{REG} is capable of sourcing approximately 1mA of current. Exceeding 1mA can affect the 4mA zero output.

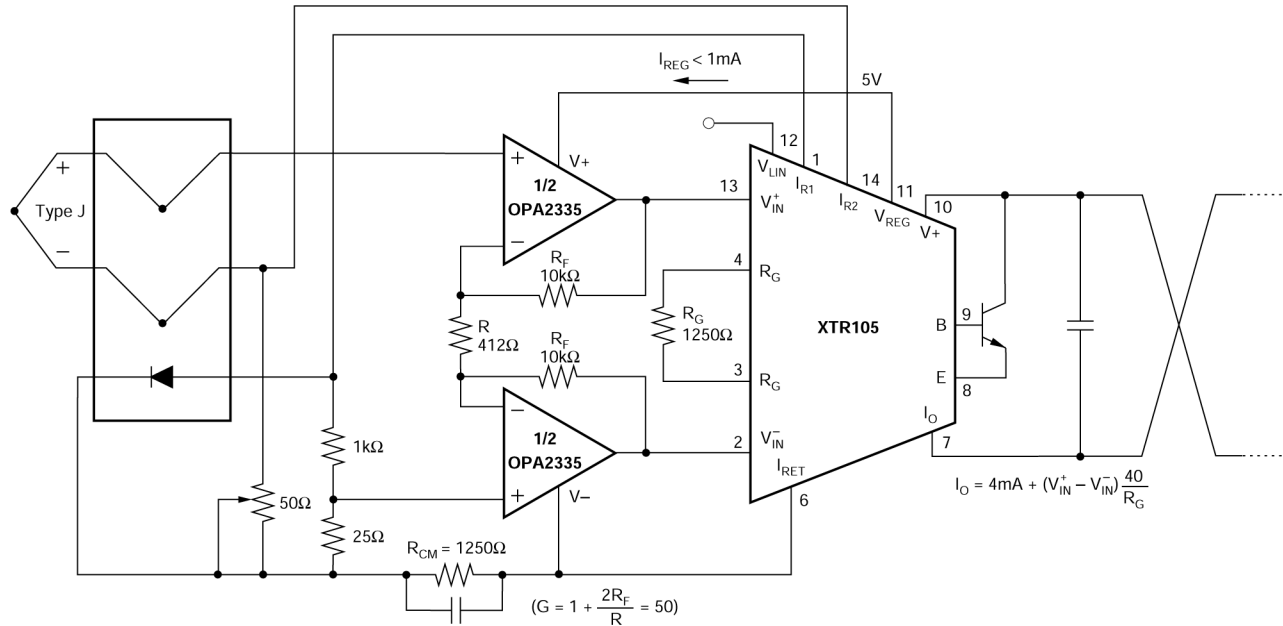


图 6-2. Thermocouple Low Offset, Low Drift Loop Measurement With Diode Cold Junction Compensation

6.3.3 Open-Circuit Protection

Optional transistor Q_2 in 图 6-3 provides predictable behavior with open-circuit RTD connections. If any one of the three RTD connections is broken, the XTR105 output current goes to either the high current limit ($\approx 27\text{mA}$) or low current limit ($\approx 2.2\text{mA}$). This state is easily detected as an out-of-range condition.

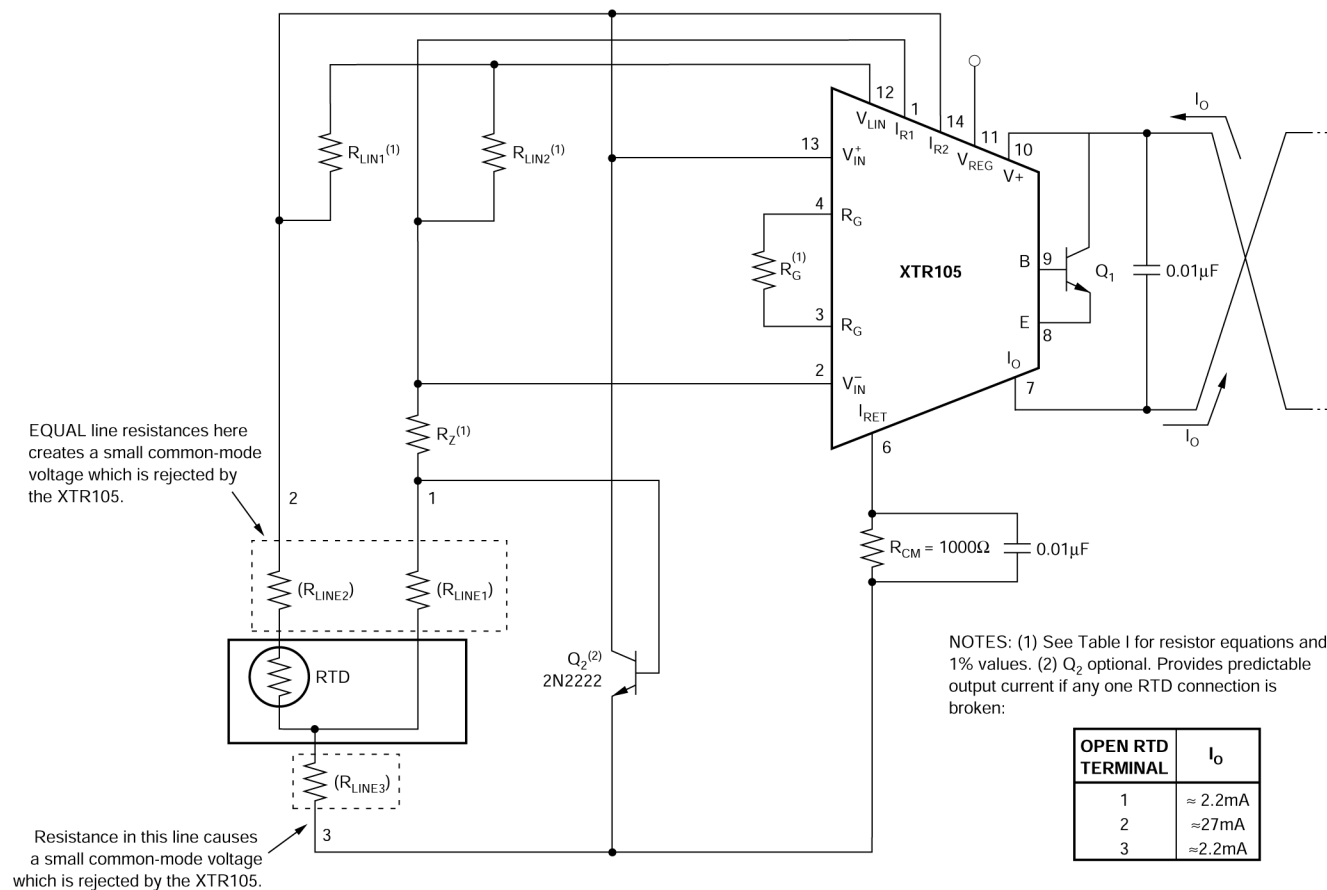


图 6-3. Remotely Located RTDs With a 3-Wire Connection

6.3.4 Reverse-Voltage Protection

The XTR105 low compliance rating (7.5V) permits the use of various voltage protection methods without compromising operating range. 图 6-4 shows a diode bridge circuit that allows normal operation even when the voltage connection lines are reversed. The bridge causes a two diode drop (approximately 1.4V) loss in loop-supply voltage. This results in a compliance voltage of approximately 9V—satisfactory for most applications. If a 1.4V drop in loop supply is too much, a diode can be inserted in series with the loop-supply voltage and the V+ pin. This protects against reverse output connection lines with only a 0.7V loss in loop-supply voltage.

6.3.5 Surge Protection

Remote connections to current transmitters are sometimes subjected to voltage surges. Limit the maximum surge voltage applied to the XTR105 to the lowest practical value. Various zener diodes and surge clamping diodes are specially designed for this purpose. Select a clamp diode with as low a voltage rating as possible for best protection. For example, a 36V protection diode allows proper transmitter operation at normal loop voltages, yet provides an appropriate level of protection against voltage surges. The XTR105 is specified to an absolute maximum loop voltage of 40V.

Most surge protection zener diodes have a diode characteristic in the forward direction that conducts excessive current, possibly damaging receiving-side circuitry, if the loop connections are reversed. If a surge protection diode is used, use a series diode or diode bridge for protection against reversed connections.

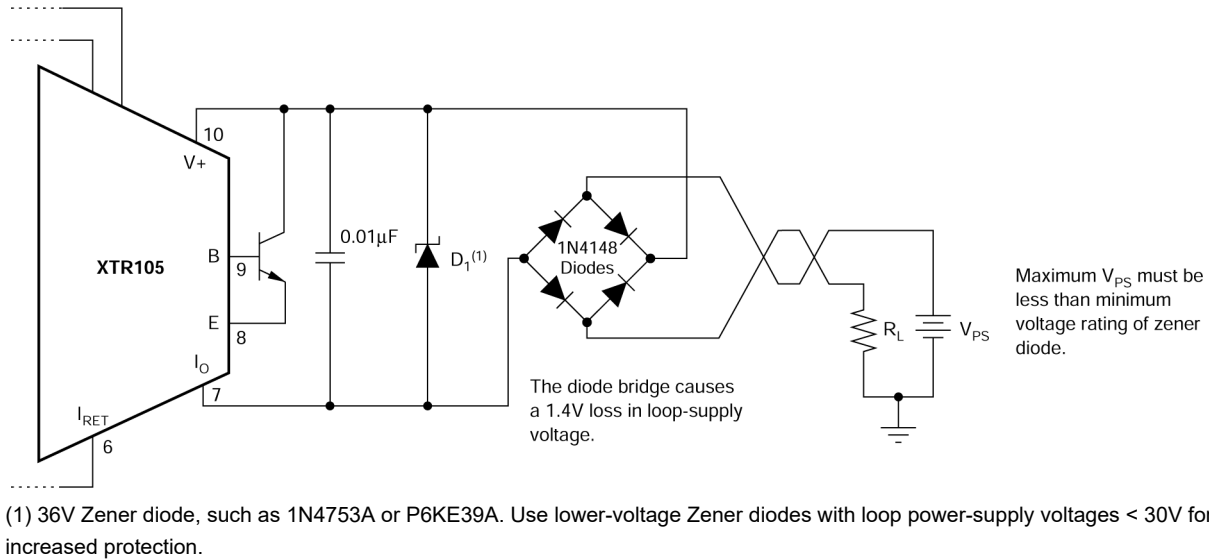


图 6-4. Reverse Voltage Operation and Overvoltage Surge Protection

6.4 Device Functional Modes

The device has one mode of operation that applies when operated within the *Recommended Operating Conditions*.

7 Application and Implementation

备注

以下应用部分中的信息不属于 TI 器件规格的范围，TI 不担保其准确性和完整性。TI 的客户应负责确定器件是否适用于其应用。客户应验证并测试其设计，以确保系统功能。

7.1 Application Information

图 7-1 shows the basic connection diagram for the XTR105. The loop power supply, V_{PS} , provides power for all circuitry. Output loop current is measured as a voltage across the series load resistor, R_L .

Two matched 0.8mA current sources drive the RTD and zero-setting resistor, R_Z . The instrumentation amplifier input of the XTR105 measures the voltage difference between the RTD and R_Z . The value of R_Z is chosen to be equal to the resistance of the RTD at the low-scale (minimum) measurement temperature. R_Z can be adjusted to achieve 4mA output at the minimum measurement temperature to correct for input offset voltage and reference current mismatch of the XTR105.

R_{CM} provides an additional voltage drop to bias the inputs of the XTR105 within the common-mode input range. Bypass R_{CM} with a 0.01 μ F capacitor to minimize common-mode noise. Resistor R_G sets the gain of the instrumentation amplifier according to the desired temperature range. R_{LIN1} provides 2nd-order linearization correction to the RTD, typically achieving a 40:1 improvement in linearity. An additional resistor is required for 3-wire RTD connections (see 图 6-3).

The transfer function through the complete instrumentation amplifier and voltage-to-current converter is:

$$I_O = 4mA + V_{IN} \times (40 / R_G)$$

(V_{IN} in volts, R_G in ohms)

where V_{IN} is the differential input voltage.

A negative input voltage, V_{IN} , causes the output current to be less than 4mA. Increasingly negative V_{IN} causes the output current to limit at approximately 2.2mA. See also typical characteristic *Under-Scale Current vs Temperature*.

Increasingly positive input voltage (greater than the full-scale input) produces increasing output current according to the transfer function, up to the output current limit of approximately 27mA. See also typical characteristic *Over-Scale Current vs Temperature*.

As evident from the transfer function, if no R_G is used the gain is zero and the output is simply the XTR105's zero current. The value of R_G varies slightly for 2-wire RTD and 3-wire RTD connections with linearization. R_G can be calculated from the equations given in 图 7-1 (2-wire RTD connection) and 表 7-1 (3-wire RTD connection).

The I_{RET} pin is the return path for all current from the current sources and V_{REG} . The I_{RET} pin allows any current used in external circuitry to be sensed by the XTR105 and to be included in the output current without causing an error.

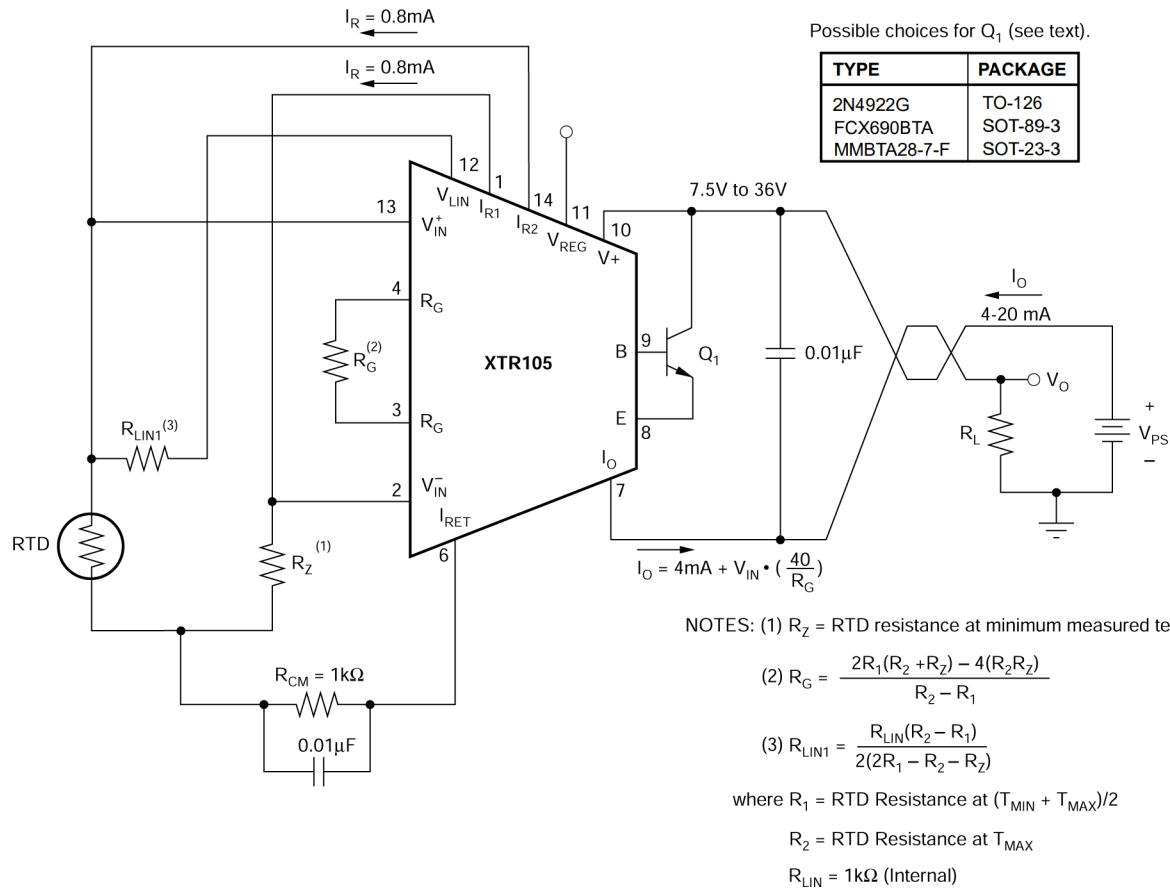


图 7-1. Basic 2-Wire RTD Temperature Measurement Circuit With Linearization

表 7-1. R_Z , R_G , R_{LIN1} , and R_{LIN2} Standard 1% Resistor Values for 3-Wire Pt100 RTD Connection With Linearization

| MEASUREMENT TEMPERATURE SPAN ΔT (°C) | | | | | | | | | | |
|--|-----------------------------|----------------------------|----------------------------|---------------------------|--------------------------|--------------------------|--------------------------|--------------------------|--------------------------|--------------------------|
| T_{MIN} | 100°C | 200°C | 300°C | 400°C | 500°C | 600°C | 700°C | 800°C | 900°C | 1000°C |
| -200°C | 18.7/86.6 15000 16500 | 18.7/169 9760 11500 | 18.7/255 8060 10000 | 18.7/340 6650 8870 | 18.7/422 5620 7870 | 18.7/511 4750 7150 | 18.7/590 4020 6420 | 18.7/665 3480 5900 | 18.7/750 3090 5360 | 18.7/845 2740 4990 |
| -100°C | 60.4/80.6 27400 29400 | 60.4/162 15400 17800 | 60.4/243 10500 13000 | 60.4/324 7870 10200 | 60.4/402 6040 8660 | 60.4/487 4990 7500 | 60.4/562 4220 6490 | 60.4/649 3570 5900 | 60.4/732 3090 5360 | |
| 0°C | 100/78.7 33200 35700 | 100/158 16200 18700 | 100/237 10500 13000 | 100/316 7680 10000 | 100/392 6040 8250 | 100/475 4870 7150 | 100/549 4020 6340 | 100/634 3480 5620 | | |
| 100°C | 137/75 31600 34000 | 137/150 15400 17800 | 137/226 10200 12400 | 137/301 7500 9760 | 137/383 5760 8060 | 137/453 4750 6810 | 137/536 3920 6040 | | | |
| 200°C | 174/73.2 30900 33200 | 174/147 15000 17400 | 174/221 9760 12100 | 174/294 7150 9310 | 174/365 5620 7680 | 174/442 4530 6490 | | | | |
| 300°C | 210/71.5 30100 32400 | 210/143 14700 16500 | 210/215 9530 11500 | 210/287 6980 8870 | 210/357 5360 7320 | | | | | |
| 400°C | 249/68.1 28700 30900 | 249/137 14000 16200 | 249/205 9090 11000 | 249/274 6650 8450 | | | | | | |
| 500°C | 280/66.5 28000 30100 | 280/133 13700 15400 | 280/200 8870 10500 | | | | | | | |
| 600°C | 316/64.9 26700 28700 | 313/130 13000 14700 | | | | | | | | |
| 700°C | 348/61.9 26100 27400 | | | | | | | | | |
| 800°C | 374/60.4 24900 26700 | | | | | | | | | |

$\left[\begin{array}{c} R_Z/R_G \\ R_{LIN1} \\ R_{LIN2} \end{array} \right]$

NOTE: The values listed in this table are 1% resistors (in Ω). Exact values may be calculated from the following equations:

R_Z = RTD resistance at minimum measured temperature.

$$R_G = \frac{2(R_Z - R_1)(R_1 - R_2)}{(R_2 - R_1)}$$

$$R_{LIN1} = \frac{R_{LIN}(R_2 - R_1)}{2(R_1 - R_2 - R_Z)}$$

$$R_{LIN2} = \frac{(R_{LIN} + R_G)(R_2 - R_1)}{2(R_1 - R_2 - R_Z)}$$

where: R_1 = RTD resistance at $(T_{MIN} + T_{MAX})/2$

R_2 = RTD resistance at T_{MAX}

R_{LIN} = 1k Ω (Internal)

EXAMPLE:

The measurement range is -100°C to +200°C for a 3-wire Pt100 RTD connection. Determine the values for R_Z , R_G , R_{LIN1} , and R_{LIN2} . Look up the values from the chart or calculate the values according to the equations provided.

METHOD 1: TABLE LOOK UP

For T_{MIN} = -100°C and ΔT = -300°C, the 1% values are:

$$\begin{array}{ll} R_Z = 60.4\Omega & R_{LIN1} = 10.5k\Omega \\ R_G = 243\Omega & R_{LIN2} = 13k\Omega \end{array}$$

METHOD 2: CALCULATION

Step 1: Determine R_Z , R_1 , and R_2 .

R_Z is the RTD resistance at the minimum measured temperature, T_{MIN} = -100°C. Using Equation 1 at right gives R_Z = 60.25 Ω (1% value is 60.4 Ω).

R_2 is the RTD resistance at the maximum measured temperature, T_{MAX} = 200°C. Using Equation 2 at right gives R_2 = 175.84 Ω .

R_1 is the RTD resistance at the midpoint measured temperature, T_{MID} = $(T_{MIN} + T_{MAX})/2$ = 50°C. R_1 is NOT the average of R_Z and R_2 . Using Equation 2 at right gives R_1 = 119.40 Ω .

Step 2: Calculate R_G , R_{LIN1} , and R_{LIN2} using equations above.

$$\begin{array}{ll} R_G = 242.3\Omega & \text{(1% value is 243}\Omega\text{)} \\ R_{LIN1} = 10.413k\Omega & \text{(1% value is 10.5k}\Omega\text{)} \\ R_{LIN2} = 12.936k\Omega & \text{(1% value is 13k}\Omega\text{)} \end{array}$$

Calculation of Pt100 Resistance Values

(according to DIN IEC 751)

(Equation 1) Temperature range from -200°C to 0°C:

$$R_{(T)} = 100 [1 + 3.90802 \cdot 10^{-3} \cdot T - 0.5802 \cdot 10^{-6} \cdot T^2 - 4.27350 \cdot 10^{-12} (T - 100)^3]$$

(Equation 2) Temperature range from 0°C to +850°C:

$$R_{(T)} = 100 (1 + 3.90802 \cdot 10^{-3} \cdot T - 0.5802 \cdot 10^{-6} \cdot T^2)$$

where: $R_{(T)}$ is the resistance in Ω at temperature T .
 T is the temperature in °C.

NOTE: Most RTD manufacturers provide reference tables for resistance values at various temperatures.

7.1.1 External Transistor

Transistor Q₁ conducts the majority of the signal-dependent 4-20mA loop current. Using an external transistor isolates the majority of the power dissipation from the precision input and reference circuitry of the XTR105, maintaining excellent accuracy.

The external transistor is inside a feedback loop; therefore, the transistor characteristics are not critical. Requirements are: $V_{CEO} = 45V$ min, $\beta = 40$ min, and $P_D = 800mW$. Power dissipation requirements can be lower if the loop power-supply voltage is less than 36V. Some possible choices for Q₁ are listed in 图 7-1.

The XTR105 operates without this external transistor; however, accuracy is somewhat degraded as a result of the internal power dissipation and resulting self-heating. Operation without Q₁ is not recommended for extended temperature ranges. A resistor ($R = 3.3k\Omega$) connected between the I_{RET} pin and the E (emitter) pin is advised for operation below 0°C without Q₁ to support the full 20mA full-scale output, especially with V₊ near 7.5V.

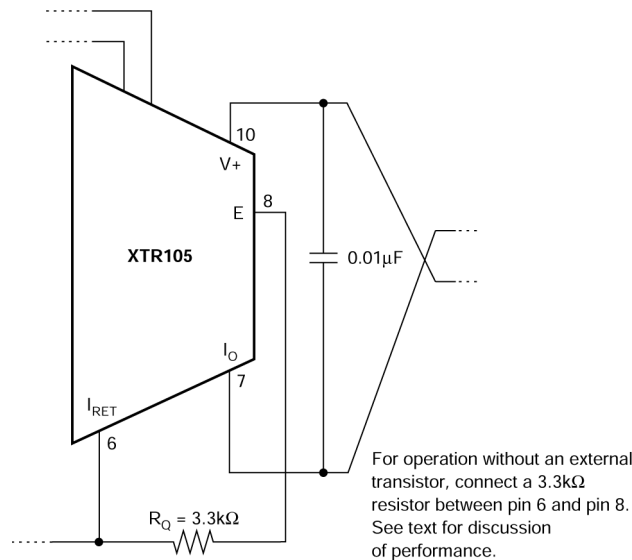


图 7-2. Operation Without an External Transistor

7.1.2 Loop Power Supply

The voltage applied to the XTR105, V₊, is measured with respect to the I_O connection, pin 7. V₊ can range from 7.5V to 36V. The loop-supply voltage, V_{PS}, differs from the voltage applied to the XTR105 according to the voltage drop on the current sensing resistor, R_L (plus any other voltage drop in the line).

If a low loop-supply voltage is used, R_L (including the loop wiring resistance) must be made a relatively low value so that V₊ remains 7.5V or greater for the maximum loop current of 20mA:

$$R_L \max = \left(\frac{(V_+) - 7.5V}{20mA} \right) - R_{WIRING}$$

For loop currents up to 30mA, design for V₊ equal or greater than 7.5V to allow for out-of-range input conditions.

The low operating voltage (7.5V) of the XTR105 allows operation directly from personal computer power supplies (12V ±5%). When used with the RCV420 current loop receiver (see 图 7-3), the load resistor voltage drop is limited to 3V.

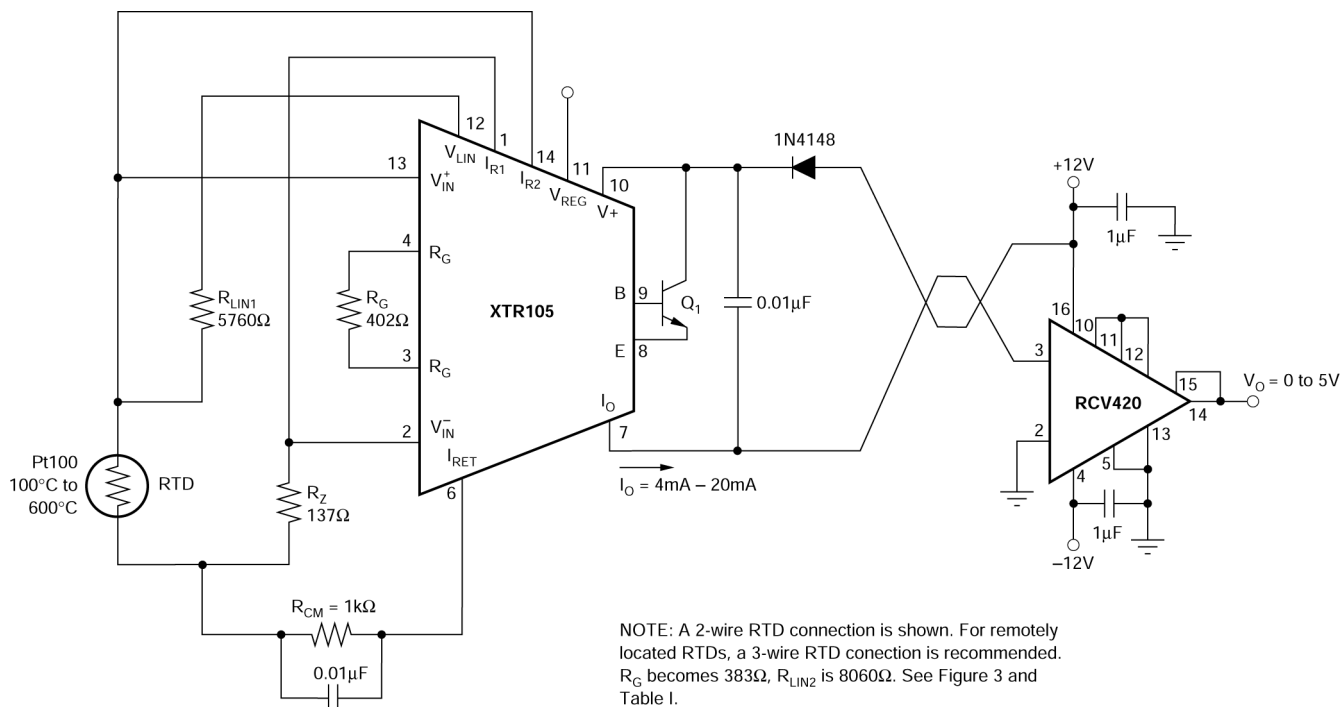


图 7-3. ±12V Powered Transmitter-Receiver Loop

7.1.3 2-Wire and 3-Wire RTD Connections

In 图 7-1, the RTD can be located remotely simply by extending the two connections to the RTD. With this remote 2-wire connection to the RTD, line resistance introduces error. This error can be partially corrected by adjusting the values of R_Z , R_G , and R_{LIN1} .

A better method for remotely located RTDs is the 3-wire RTD connection (see 图 6-3). This circuit offers improved accuracy. R_Z 's current is routed through a third wire to the RTD. Assuming line resistance is equal in RTD lines 1 and 2, this produces a small common-mode voltage that is rejected by the XTR105. A second resistor, R_{LIN2} , is required for linearization.

Note that although the 2-wire and 3-wire RTD connection circuits are very similar, the gain-setting resistor, R_G , has slightly different equations:

$$\text{2-wire: } R_G = \frac{2R_1(R_2 + R_Z) - 4(R_2R_Z)}{R_2 - R_1}$$

$$\text{3-wire: } R_G = \frac{2(R_2 - R_Z)(R_1 - R_Z)}{R_2 - R_1}$$

where

- R_Z = RTD resistance at T_{MIN}
- R_1 = RTD resistance at $(T_{MIN} + T_{MAX}) / 2$
- R_2 = RTD resistance at T_{MAX}

To maintain good accuracy, use at least 1% (or better) resistors for R_G . 表 7-1 provides standard 1% R_G resistor values for a 3-wire Pt100 RTD connection with linearization.

7.1.4 Radio Frequency Interference

The long wire lengths of current loops invite radio frequency (RF) interference. RF can be rectified by the sensitive input circuitry of the XTR105, causing errors. This generally appears as an unstable output current that varies with the position of loop supply or input wiring.

If the RTD sensor is remotely located, the interference can enter at the input terminals. For integrated transmitter assemblies with short connections to the sensor, the interference more likely comes from the current loop connections.

Bypass capacitors on the input reduce or eliminate this input interference. Connect these bypass capacitors to the I_{RET} terminal (see 图 7-4). Although the dc voltage at the I_{RET} terminal is not equal to 0V (at the loop supply, V_{PS}), this circuit point can be considered the transmitter *ground*. The $0.01\mu\text{F}$ capacitor connected between $V+$ and I_O can help minimize output interference.

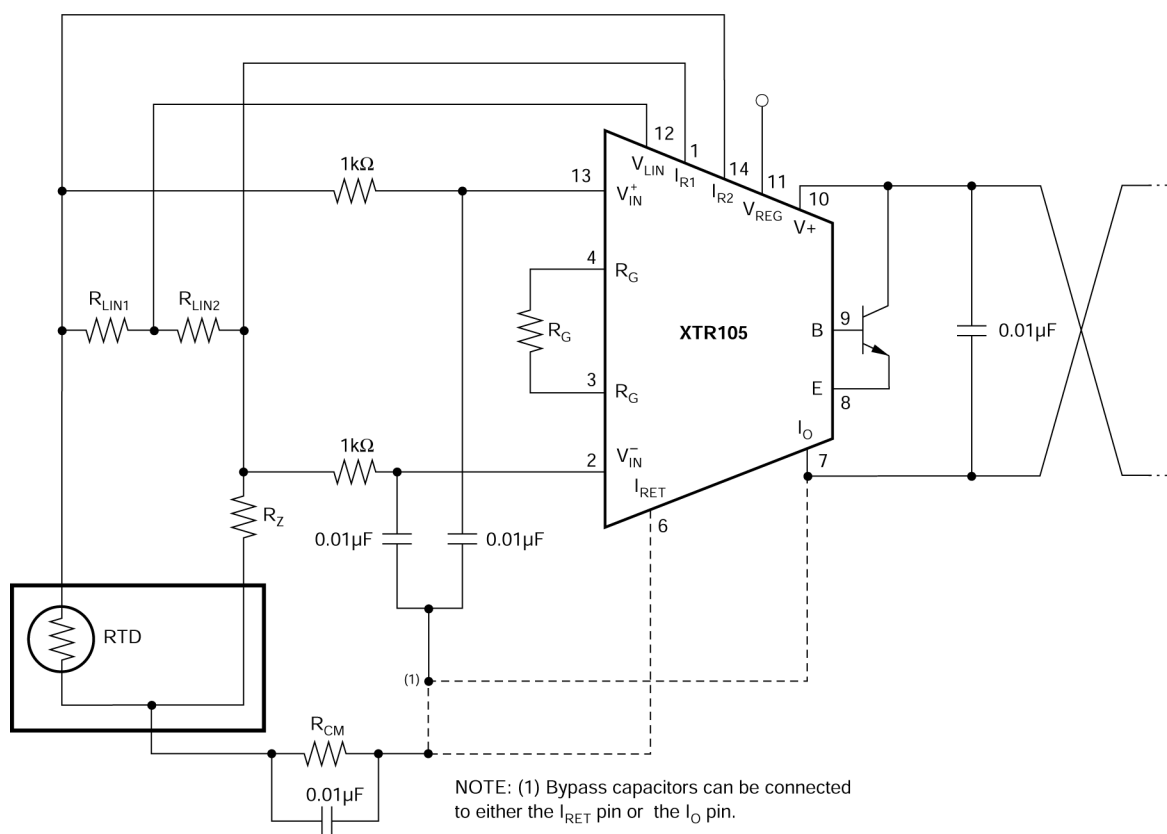


图 7-4. Input Bypassing Technique With Linearization

7.1.5 Error Analysis

Many applications require adjustment of initial errors. Input offset and reference current mismatch errors can be corrected by adjustment of the zero resistor, R_Z . Adjusting the gain-setting resistor, R_G , corrects any errors associated with gain.

表 7-2 shows how to calculate the effect of various error sources on the circuit accuracy. A sample error calculation for a typical RTD measurement circuit (Pt100 RTD, 200°C measurement span) is provided. The results reveal the XTR105 excellent accuracy, in this case 1.1% unadjusted. Adjusting resistors R_G and R_Z for gain and offset errors improves circuit accuracy to 0.32%. These are worst-case errors; maximum values were used in the calculations and all errors were assumed to be positive (additive). The XTR105 achieves performance that is difficult to obtain with discrete circuitry and requires less space.

表 7-2. Error Calculation

| SAMPLE ERROR CALCULATION | | | | |
|--|---|--|------------------------------|---------|
| RTD value at 4mA output (R _{RTD MIN}): 100 Ω | | | | |
| RTD measurement range: 200°C | | | | |
| Ambient temperature range (Δ T _A): 20°C | | | | |
| Supply voltage change (Δ V ₊): 5V | | | | |
| Common-mode voltage change (Δ CM): 0.1V | | | | |
| ERROR SOURCE | ERROR EQUATION | SAMPLE ERROR CALCULATION ⁽¹⁾ | ERROR (ppm of Full Scale) | |
| | | | UNADJ. | ADJUST. |
| INPUT | | | | |
| Input offset voltage | V _{OS} / (V _{IN MAX}) × 10 ⁶ | 100 μ V / (800 μ A × 0.38 Ω /°C × 200°C) × 10 ⁶ | 1645 | 0 |
| vs common-mode | CMRR · Δ CM / (V _{IN MAX}) × 10 ⁶ | 50 μ V / V × 0.1 V / (800 μ A × 0.38 Ω /°C × 200°C) × 10 ⁶ | 82 | 82 |
| Input bias current | I _B / I _{REF} × 10 ⁶ | 0.025 μ A / 800 μ A × 10 ⁶ | 31 | 0 |
| Input offset current | I _{OS} × R _{RTD MIN} / (V _{IN MAX}) × 10 ⁶ | 3nA × 100 Ω / (800 μ A × 0.38 Ω /°C × 200°C) × 10 ⁶ | 5 | 0 |
| Total Input Error: | | | 1763 | 82 |
| EXCITATION | | | | |
| Current reference accuracy | I _{REF} accuracy (%) / 100% × 10 ⁶ | 0.2% / 100% × 10 ⁶ | 2000 | 0 |
| vs supply | (I _{REF} vs V ₊) × Δ V ₊ | 25ppm/V × 5V | 125 | 125 |
| Current reference matching | I _{REF} matching (%) / 100% × 800 μ A × R _{RTD MIN} / (V _{IN MAX}) × 10 ⁶ | 0.1% / 100% × 800 μ A × 100 Ω / (800 μ A × 0.38 Ω /°C × 200°C) × 10 ⁶ | 1316 | 0 |
| vs supply | (I _{REF} matching vs V ₊) × Δ V ₊ × R _{RTD MIN} / (V _{IN MAX}) | 10ppm/V × 5V × 800 μ A × 100 Ω / (800 μ A × 0.38 Ω /°C × 200°C) | 66 | 66 |
| Total Excitation Error: | | | 3507 | 191 |
| GAIN | | | | |
| Span | Span error (%) / 100% × 10 ⁶ | 0.2% / 100% × 10 ⁶ | 2000 | 0 |
| Nonlinearity | Nonlinearity (%) / 100% × 10 ⁶ | 0.01% / 100% × 10 ⁶ | 100 | 100 |
| Total Gain Error: | | | 2100 | 100 |
| OUTPUT | | | | |
| Zero output | (I _{ZERO} - 4mA) / 16000 μ A × 10 ⁶ | 25 μ A / 16000 μ A × 10 ⁶ | 1563 | 0 |
| vs supply | (I _{ZERO} vs V ₊) × Δ V ₊ / 16000 μ A × 10 ⁶ | 0.2 μ A / V × 5V / 16000 μ A × 10 ⁶ | 63 | 63 |
| Total Output Error: | | | 1626 | 63 |
| DRIFT (Δ T _A = 20°C) | | | | |
| Input offset voltage | Drift × Δ T _A / (V _{IN MAX}) × 10 ⁶ | 1.5 μ V /°C × 20°C / (800 μ A × 0.38 Ω /°C × 200°C) × 10 ⁶ | 493 | 493 |
| Input bias current (typical) | Drift × Δ T _A / 800 μ A × 10 ⁶ | 20pA /°C × 20°C / 800 μ A × 10 ⁶ | 0.5 | 0.5 |
| Input offset current (typical) | Drift × Δ T _A × R _{RTD MIN} / (V _{IN MAX}) × 10 ⁶ | 5pA /°C × 20°C × 100W / (800 μ A × 0.38 Ω /°C × 200°C) × 10 ⁶ | 0.2 | 0.2 |
| Current reference accuracy | Drift · Δ T _A | 35ppm /°C × 20°C | 700 | 700 |
| Current reference matching | Drift × Δ T _A × 800 μ A × R _{RTD MIN} / (V _{IN MAX}) | 15ppm /°C × 20°C × 800 μ A × 100 Ω / (800 μ A × 0.38 Ω /°C × 200°C) | 395 | 395 |
| Span | Drift × Δ T _A | 25ppm /°C × 20°C | 500 | 500 |
| Zero output | Drift × Δ T _A / 16000 μ A × 10 ⁶ | 0.5 μ A /°C × 20°C / 16000 μ A × 10 ⁶ | 626 | 626 |
| Total Drift Error: | | | 2715 | 2715 |
| NOISE (0.1Hz to 10Hz, typical) | | | | |
| Input offset voltage | v _n / (V _{IN MAX}) × 10 ⁶ | 0.6 μ V / (800 μ A × 0.38 Ω /°C × 200°C) × 10 ⁶ | 10 | 10 |
| Current reference | I _{REF} noise × R _{RTD MIN} / (V _{IN MAX}) × 10 ⁶ | 3nA × 100 Ω / (800 μ A × 0.38 Ω /°C × 200°C) × 10 ⁶ | 5 | 5 |
| Zero output | I _{ZERO} noise / 16000 μ A × 10 ⁶ | 0.03 μ A / 16000 μ A × 10 ⁶ | 2 | 2 |
| Total Noise Error: | | | 17 | 17 |

表 7-2. Error Calculation (续)

| SAMPLE ERROR CALCULATION | | | | |
|--|----------------|---|------------------------------|-----------------|
| RTD value at 4mA output (R _{RTD MIN}): 100 Ω | | | | |
| RTD measurement range: 200°C | | | | |
| Ambient temperature range (Δ T _A): 20°C | | | | |
| Supply voltage change (Δ V ₊): 5V | | | | |
| Common-mode voltage change (Δ CM): 0.1V | | | | |
| ERROR SOURCE | ERROR EQUATION | SAMPLE ERROR CALCULATION ⁽¹⁾ | ERROR (ppm of Full Scale) | |
| | | | UNADJ. | ADJUST. |
| TOTAL ERROR: | | | 11728 (1.17%) | 3168 (0.32%) |

(1) All errors are minimum and maximum, and referred to input, unless otherwise stated.

7.2 Typical Applications

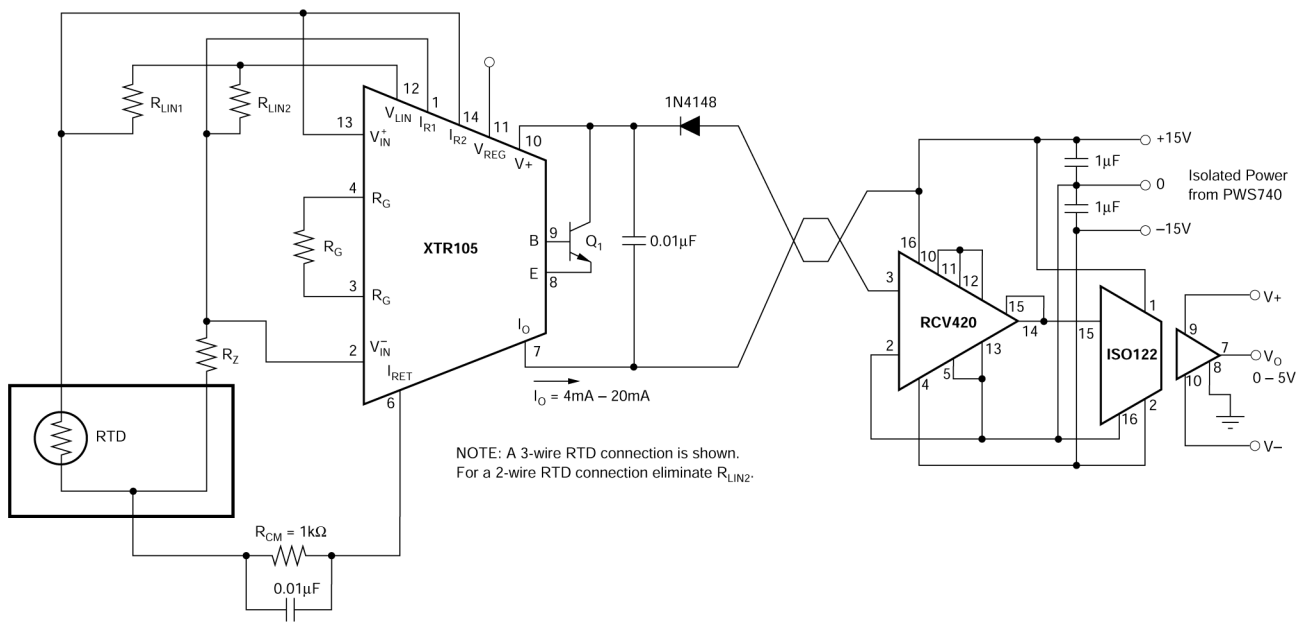


图 7-5. Isolated Transmitter-Receiver Loop

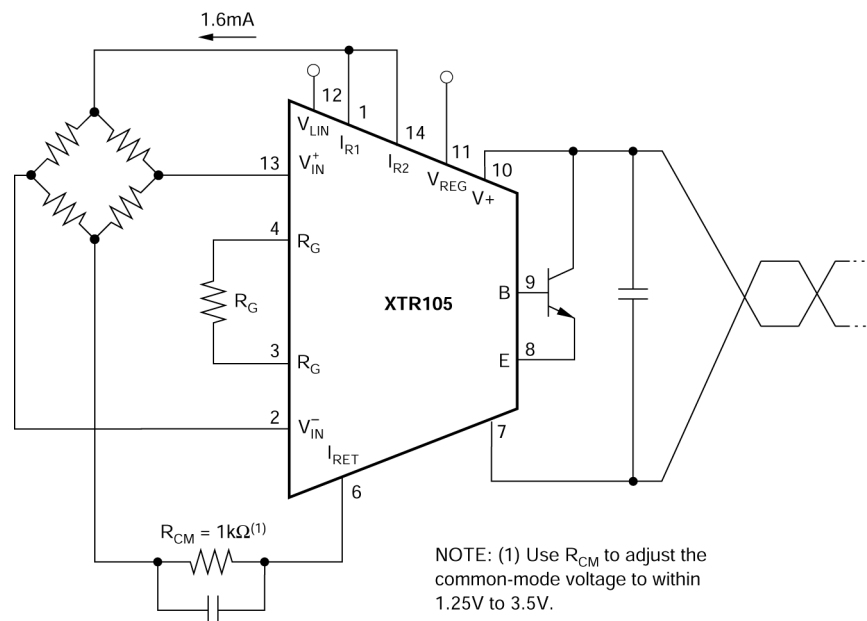


图 7-6. Bridge Input, Current Excitation

7.3 Layout

7.3.1 Layout Guidelines

The XTR105 is typically used with an external transistor (Q_1) to regulate the power dissipation of the 4-20mA loop. This allows the resulting localized self-heating to be distanced from the precision circuitry of the XTR105 and reduces over-temperature drift errors.

The XTR105 can be used without the Q_1 transistor if the application requirements do not lead to violation of the device *Absolute Maximum Requirements*, such as the maximum junction temperature. Calculate the peak power dissipation and multiply by thermal resistance to determine the associated junction temperature rise. Minimize overheat conditions for reliable long-term operation.

Place supply bypass capacitors close to the package and make connections with low-impedance conductors. Reduce trace lengths for R_G to minimize coupled environmental noise. If the loop power supply is electrically noisy, implement filtering using decoupling capacitors and small resistors or dampening inductors in series with $V+$.

8 Device and Documentation Support

TI offers an extensive line of development tools. Tools and software to evaluate the performance of the device, generate code, and develop solutions are listed below.

8.1 Documentation Support

8.1.1 Related Documentation

For related documentation see the following:

- Texas Instruments, [Special Function Amplifiers Precision Labs video series](#) on Current Loop Transmitters
- Texas Instruments, [Analog Linearized 3-Wire PT100 RTD to 2-Wire 4-20mA Current Loop Transmitter reference design](#) with XTR105
- Texas Instruments, [Analog Linearization of Resistance Temperature Detectors](#) technical article
- Texas Instruments, [A Basic Guide to RTD Measurements](#) application note

8.2 接收文档更新通知

要接收文档更新通知，请导航至 [ti.com](#) 上的器件产品文件夹。点击 [通知](#) 进行注册，即可每周接收产品信息更改摘要。有关更改的详细信息，请查看任何已修订文档中包含的修订历史记录。

8.3 支持资源

TI E2E™ 中文支持论坛是工程师的重要参考资料，可直接从专家处获得快速、经过验证的解答和设计帮助。搜索现有解答或提出自己的问题，获得所需的快速设计帮助。

链接的内容由各个贡献者“按原样”提供。这些内容并不构成 TI 技术规范，并且不一定反映 TI 的观点；请参阅 TI 的[使用条款](#)。

8.4 Trademarks

TI E2E™ is a trademark of Texas Instruments.

所有商标均为其各自所有者的财产。

8.5 静电放电警告



静电放电 (ESD) 会损坏这个集成电路。德州仪器 (TI) 建议通过适当的预防措施处理所有集成电路。如果不遵守正确的处理和安装程序，可能会损坏集成电路。

ESD 的损坏小至导致微小的性能降级，大至整个器件故障。精密的集成电路可能更容易受到损坏，这是因为非常细微的参数更改都可能会导致器件与其发布的规格不相符。

8.6 术语表

[TI 术语表](#) 本术语表列出并解释了术语、首字母缩略词和定义。

9 Revision History

注：以前版本的页码可能与当前版本的页码不同

| Changes from Revision B (August 2004) to Revision C (October 2024) | Page |
|--|-------------------|
| • 添加了 引脚配置和功能 、 规格 、 ESD 等级 、 建议运行条件 、 热性能信息 、 详细说明 、 概述 、 功能方框图 、 特性说明 、 器件功能模式 、 应用和实现 、 典型应用 、 布局 、 布局指南 、 器件和文档支持 和 机械 、 封装和可订购信息 部分 | 1 |
| • 向 应用 部分添加了终端设备 | 1 |
| • 更新了整个文档中的表格、图和交叉参考的编号格式 | 1 |
| • Added Pin Functions table | 3 |
| • Moved operating and storage temperature parameters from Electrical Characteristics to Absolute Maximum Ratings | 4 |
| • Changed minimum operating temperature from -55°C to -40°C in Absolute Maximum Ratings | 4 |

| | |
|--|----|
| • Moved specified temperature and power-supply parameters from <i>Electrical Characteristics</i> to <i>Recommended Operating Conditions</i> | 4 |
| • Deleted thermal resistance, θ_{JA} parameters in <i>Electrical Characteristics</i> and replaced with detailed thermal model parameters in <i>Thermal Information</i> | 4 |
| • Updated formatting of <i>Electrical Characteristics</i> table..... | 5 |
| • Changed Voltage accuracy vs temperature typical specification from $\pm 0.2\text{mV}/^\circ\text{C}$ to $\pm 0.5\text{mV}/^\circ\text{C}$ in <i>Electrical Characteristics</i> | 5 |
| • Updated Figure 5-2, <i>Step Response</i> | 7 |
| • Updated Figure 5-8, <i>Zero Output and Reference Current Noise vs Frequency</i> | 7 |
| • Changed description of maximum loop-supply voltage to specified absolute maximum rating in <i>Surge Protection</i> | 14 |
| • Updated suggested Zener diode part numbers in Figure 6-4, <i>Reverse Voltage Operation and Overvoltage Surge Protection</i> | 14 |
| • Updated suggested transistor part numbers in Figure 7-1, <i>Basic 2-Wire RTD Temperature Measurement Circuit with Linearization</i> | 15 |
| • Moved <i>Adjusting Initial Errors</i> into <i>Error Analysis</i> section | 20 |

10 Mechanical, Packaging, and Orderable Information

The following pages include mechanical, packaging, and orderable information. This information is the most current data available for the designated devices. This data is subject to change without notice and revision of this document. For browser-based versions of this data sheet, refer to the left-hand navigation.

PACKAGING INFORMATION

| Orderable part number | Status (1) | Material type (2) | Package Pins | Package qty Carrier | RoHS (3) | Lead finish/ Ball material (4) | MSL rating/ Peak reflow (5) | Op temp (°C) | Part marking (6) |
|------------------------------|---------------|----------------------|----------------|-----------------------|-------------|--------------------------------------|-----------------------------------|--------------|------------------------------|
| XTR105P | Active | Production | PDIP (N) 14 | 25 TUBE | Yes | Call TI | N/A for Pkg Type | -40 to 85 | XTR105P A |
| XTR105P.A | Active | Production | PDIP (N) 14 | 25 TUBE | Yes | Call TI | N/A for Pkg Type | -40 to 85 | XTR105P A |
| XTR105PA | Active | Production | PDIP (N) 14 | 25 TUBE | Yes | Call TI | N/A for Pkg Type | -40 to 85 | XTR105P A |
| XTR105PA.A | Active | Production | PDIP (N) 14 | 25 TUBE | Yes | Call TI | N/A for Pkg Type | -40 to 85 | XTR105P A |
| XTR105U | Obsolete | Production | SOIC (D) 14 | - | - | Call TI | Call TI | -40 to 85 | XTR105U |
| XTR105UA | Obsolete | Production | SOIC (D) 14 | - | - | Call TI | Call TI | -40 to 85 | XTR105U A |
| XTR105UA/2K5 | Active | Production | SOIC (D) 14 | 2500 LARGE T&R | Yes | NIPDAU NIPDAU | Level-3-260C-168 HR | -40 to 85 | (XTR105U, XTR105UA) A |
| XTR105UA/2K5.B | Active | Production | SOIC (D) 14 | 2500 LARGE T&R | Yes | NIPDAU | Level-3-260C-168 HR | -40 to 85 | (XTR105U, XTR105UA) A |

(1) **Status:** For more details on status, see our [product life cycle](#).

(2) **Material type:** When designated, preproduction parts are prototypes/experimental devices, and are not yet approved or released for full production. Testing and final process, including without limitation quality assurance, reliability performance testing, and/or process qualification, may not yet be complete, and this item is subject to further changes or possible discontinuation. If available for ordering, purchases will be subject to an additional waiver at checkout, and are intended for early internal evaluation purposes only. These items are sold without warranties of any kind.

(3) **RoHS values:** Yes, No, RoHS Exempt. See the [TI RoHS Statement](#) for additional information and value definition.

(4) **Lead finish/Ball material:** Parts may have multiple material finish options. Finish options are separated by a vertical ruled line. Lead finish/Ball material values may wrap to two lines if the finish value exceeds the maximum column width.

(5) **MSL rating/Peak reflow:** The moisture sensitivity level ratings and peak solder (reflow) temperatures. In the event that a part has multiple moisture sensitivity ratings, only the lowest level per JEDEC standards is shown. Refer to the shipping label for the actual reflow temperature that will be used to mount the part to the printed circuit board.

(6) **Part marking:** There may be an additional marking, which relates to the logo, the lot trace code information, or the environmental category of the part.

Multiple part markings will be inside parentheses. Only one part marking contained in parentheses and separated by a "~" will appear on a part. If a line is indented then it is a continuation of the previous line and the two combined represent the entire part marking for that device.

Important Information and Disclaimer: The information provided on this page represents TI's knowledge and belief as of the date that it is provided. TI bases its knowledge and belief on information provided by third parties, and makes no representation or warranty as to the accuracy of such information. Efforts are underway to better integrate information from third parties. TI has taken and continues to take reasonable steps to provide representative and accurate information but may not have conducted destructive testing or chemical analysis on incoming materials and chemicals. TI and TI suppliers consider certain information to be proprietary, and thus CAS numbers and other limited information may not be available for release.

In no event shall TI's liability arising out of such information exceed the total purchase price of the TI part(s) at issue in this document sold by TI to Customer on an annual basis.

TAPE AND REEL INFORMATION



*All dimensions are nominal

| Device | Package Type | Package Drawing | Pins | SPQ | Reel Diameter (mm) | Reel Width W1 (mm) | A0 (mm) | B0 (mm) | K0 (mm) | P1 (mm) | W (mm) | Pin1 Quadrant |
|--------------|--------------|-----------------|------|------|--------------------|--------------------|---------|---------|---------|---------|--------|---------------|
| XTR105UA/2K5 | SOIC | D | 14 | 2500 | 330.0 | 16.4 | 6.5 | 9.0 | 2.1 | 8.0 | 16.0 | Q1 |

TAPE AND REEL BOX DIMENSIONS



*All dimensions are nominal

| Device | Package Type | Package Drawing | Pins | SPQ | Length (mm) | Width (mm) | Height (mm) |
|--------------|--------------|-----------------|------|------|-------------|------------|-------------|
| XTR105UA/2K5 | SOIC | D | 14 | 2500 | 353.0 | 353.0 | 32.0 |

TUBE



*All dimensions are nominal

| Device | Package Name | Package Type | Pins | SPQ | L (mm) | W (mm) | T (μm) | B (mm) |
|------------|--------------|--------------|------|-----|--------|--------|--------|--------|
| XTR105P | N | PDIP | 14 | 25 | 506 | 13.97 | 11230 | 4.32 |
| XTR105P.A | N | PDIP | 14 | 25 | 506 | 13.97 | 11230 | 4.32 |
| XTR105PA | N | PDIP | 14 | 25 | 506 | 13.97 | 11230 | 4.32 |
| XTR105PA.A | N | PDIP | 14 | 25 | 506 | 13.97 | 11230 | 4.32 |

D0014A**PACKAGE OUTLINE****SOIC - 1.75 mm max height**

SMALL OUTLINE INTEGRATED CIRCUIT



4220718/A 09/2016

NOTES:

1. All linear dimensions are in millimeters. Dimensions in parenthesis are for reference only. Dimensioning and tolerancing per ASME Y14.5M.
2. This drawing is subject to change without notice.
3. This dimension does not include mold flash, protrusions, or gate burrs. Mold flash, protrusions, or gate burrs shall not exceed 0.15 mm, per side.
4. This dimension does not include interlead flash. Interlead flash shall not exceed 0.43 mm, per side.
5. Reference JEDEC registration MS-012, variation AB.

EXAMPLE BOARD LAYOUT

D0014A

SOIC - 1.75 mm max height

SMALL OUTLINE INTEGRATED CIRCUIT



LAND PATTERN EXAMPLE
SCALE:8X



SOLDER MASK DETAILS

4220718/A 09/2016

NOTES: (continued)

6. Publication IPC-7351 may have alternate designs.

7. Solder mask tolerances between and around signal pads can vary based on board fabrication site.

EXAMPLE STENCIL DESIGN

D0014A

SOIC - 1.75 mm max height

SMALL OUTLINE INTEGRATED CIRCUIT



SOLDER PASTE EXAMPLE
BASED ON 0.125 mm THICK STENCIL
SCALE:8X

4220718/A 09/2016

NOTES: (continued)

8. Laser cutting apertures with trapezoidal walls and rounded corners may offer better paste release. IPC-7525 may have alternate design recommendations.
9. Board assembly site may have different recommendations for stencil design.

N (R-PDIP-T**)

16 PINS SHOWN

PLASTIC DUAL-IN-LINE PACKAGE



| PINS ** DIM | 14 | 16 | 18 | 20 |
|---------------------|------------------|------------------|------------------|------------------|
| A MAX | 0.775 (19,69) | 0.775 (19,69) | 0.920 (23,37) | 1.060 (26,92) |
| A MIN | 0.745 (18,92) | 0.745 (18,92) | 0.850 (21,59) | 0.940 (23,88) |
| MS-001 VARIATION | AA | BB | AC | AD |



4040049/E 12/2002

- NOTES:
- A. All linear dimensions are in inches (millimeters).
 - B. This drawing is subject to change without notice.
 -  Falls within JEDEC MS-001, except 18 and 20 pin minimum body length (Dim A).
 -  The 20 pin end lead shoulder width is a vendor option, either half or full width.

重要通知和免责声明

TI“按原样”提供技术和可靠性数据（包括数据表）、设计资源（包括参考设计）、应用或其他设计建议、网络工具、安全信息和其他资源，不保证没有瑕疵且不做任何明示或暗示的担保，包括但不限于对适销性、某特定用途方面的适用性或不侵犯任何第三方知识产权的暗示担保。

这些资源可供使用 TI 产品进行设计的熟练开发人员使用。您将自行承担以下全部责任：(1) 针对您的应用选择合适的 TI 产品，(2) 设计、验证并测试您的应用，(3) 确保您的应用满足相应标准以及任何其他功能安全、信息安全、监管或其他要求。

这些资源如有变更，恕不另行通知。TI 授权您仅可将这些资源用于研发本资源所述的 TI 产品的相关应用。严禁以其他方式对这些资源进行复制或展示。您无权使用任何其他 TI 知识产权或任何第三方知识产权。您应全额赔偿因在这些资源的使用中对 TI 及其代表造成的任何索赔、损害、成本、损失和债务，TI 对此概不负责。

TI 提供的产品受 [TI 的销售条款](#) 或 [ti.com](#) 上其他适用条款/TI 产品随附的其他适用条款的约束。TI 提供这些资源并不会扩展或以其他方式更改 TI 针对 TI 产品发布的适用的担保或担保免责声明。

TI 反对并拒绝您可能提出的任何其他或不同的条款。

邮寄地址：Texas Instruments, Post Office Box 655303, Dallas, Texas 75265
版权所有 © 2025，德州仪器 (TI) 公司