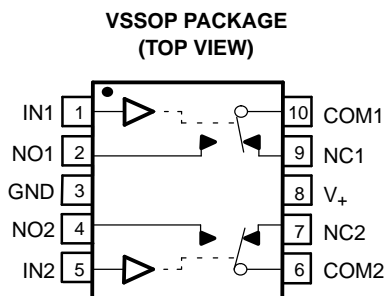


## FEATURES

- Specified Make-Before-Break Switching
- Low ON-State Resistance (1 Ω)
- Control Inputs Are 5.5-V Tolerant
- Low Charge Injection
- Excellent ON-State Resistance Matching
- Low Total Harmonic Distortion (THD)
- 1.65-V to 5.5-V Single-Supply Operation
- Latch-Up Performance Exceeds 100 mA Per JESD 78, Class II
- ESD Performance Tested Per JESD 22
  - 2000-V Human-Body Model (A114-B, Class II)
  - 1000-V Charged-Device Model (C101)

## APPLICATIONS

- Cell Phones
- PDAs
- Portable Instrumentation
- Audio and Video Signal Routing
- Low-Voltage Data Acquisition Systems
- Communication Circuits
- Modems
- Hard Drives
- Computer Peripherals
- Wireless Terminals and Peripherals



## DESCRIPTION

The TS5A23160 is a dual single-pole double-throw (SPDT) analog switch that is designed to operate from 1.65 V to 5.5 V. The device offers a low ON-state resistance and an excellent channel-to-channel ON-state resistance matching. The device has excellent total harmonic distortion (THD) performance and consumes very low power. These features make this device suitable for portable audio applications.

**FUNCTION TABLE**

IN	NC TO COM, COM TO NC	NO TO COM, COM TO NO
L	ON	OFF
H	OFF	ON



Please be aware that an important notice concerning availability, standard warranty, and use in critical applications of Texas Instruments semiconductor products and disclaimers thereto appears at the end of this data sheet.

**TS5A23160**  
**0.9-Ω DUAL SPDT ANALOG SWITCH**  
**5-V/3.3-V 2-CHANNEL 2:1 MULTIPLEXER/DEMULTIPLEXER**

SCDS210A – AUGUST 2005 – REVISED APRIL 2006

**SUMMARY OF CHARACTERISTICS<sup>(1)</sup>**

Configuration	Dual 2:1 Multiplexer/ Demultiplexer (2 × SPDT)
Number of channels	2
ON-state resistance ( $r_{on}$ )	0.9 Ω
ON-state resistance match ( $\Delta r_{on}$ )	0.1 Ω
ON-state resistance flatness ( $r_{on(flat)}$ )	0.15 Ω
Turn-on/turn-off time ( $t_{ON}/t_{OFF}$ )	2.5 ns/6 ns
Make-before-break time ( $t_{MBB}$ )	5.5 ns
Charge injection ( $Q_C$ )	1 pC
Bandwidth (BW)	95 MHz
OFF isolation ( $O_{ISO}$ )	–64 dB at 1 MHz
Crosstalk ( $X_{TALK}$ )	–64 dB at 1 MHz
Total harmonic distortion (THD)	0.004%
Leakage current ( $I_{NC(OFF)}$ )	±20 nA
Power-supply current ( $I_+$ )	0.1 μA
Package option	10-pin VSSOP

(1)  $V_+ = 5\text{ V}$ ,  $T_A = 25^\circ\text{C}$

**ORDERING INFORMATION**

$T_A$	PACKAGE <sup>(1)</sup>		ORDERABLE PART NUMBER	TOP-SIDE MARKING
–40°C to 85°C	VSSOP – DGS (MSOP)	Tape and reel	TS5A23160DGSR	PREVIEW

(1) Package drawings, standard packing quantities, thermal data, symbolization, and PCB design guidelines are available at [www.ti.com/sc/package](http://www.ti.com/sc/package).

## Absolute Maximum Ratings<sup>(1)(2)</sup>

over operating free-air temperature range (unless otherwise noted)

			MIN	MAX	UNIT
V <sub>+</sub>	Supply voltage range <sup>(3)</sup>		−0.5	6.5	V
V <sub>NC</sub> V <sub>NO</sub> V <sub>COM</sub>	Analog voltage range <sup>(3)(4)(5)</sup>		−0.5	V <sub>+</sub> + 0.5	V
I <sub>K</sub>	Analog port diode current	V <sub>NC</sub> , V <sub>NO</sub> , V <sub>COM</sub> < 0 or V <sub>NC</sub> , V <sub>NO</sub> , V <sub>COM</sub> > V <sub>+</sub>	−50	50	mA
I <sub>NC</sub> I <sub>NO</sub> I <sub>COM</sub>	On-state switch current	V <sub>NC</sub> , V <sub>NO</sub> , V <sub>COM</sub> = 0 to V <sub>+</sub>	−200	200	mA
	On-state peak switch current <sup>(6)</sup>		−400	400	
V <sub>I</sub>	Digital input voltage range <sup>(3)(4)</sup>		−0.5	6.5	V
I <sub>IK</sub>	Digital input clamp current	V <sub>I</sub> < 0	−50		mA
I <sub>+</sub>	Continuous current through V <sub>+</sub>			100	mA
I <sub>GND</sub>	Continuous current through GND		−100	100	mA
θ <sub>JA</sub>	Package thermal impedance <sup>(7)</sup>			165	°C/W
T <sub>stg</sub>	Storage temperature range		−65	150	°C

- (1) Stresses above these ratings may cause permanent damage. Exposure to absolute maximum conditions for extended periods may degrade device reliability. These are stress ratings only, and functional operation of the device at these or any other conditions beyond those specified is not implied.
- (2) The algebraic convention, whereby the most negative value is a minimum and the most positive value is a maximum
- (3) All voltages are with respect to ground, unless otherwise specified.
- (4) The input and output voltage ratings may be exceeded if the input and output clamp-current ratings are observed.
- (5) This value is limited to 5.5 V maximum.
- (6) Pulse at 1-ms duration < 10% duty cycle
- (7) The package thermal impedance is calculated in accordance with JESD 51-7.

**TS5A23160**  
**0.9-Ω DUAL SPDT ANALOG SWITCH**  
**5-V/3.3-V 2-CHANNEL 2:1 MULTIPLEXER/DEMULTIPLEXER**

SCDS210A–AUGUST 2005–REVISED APRIL 2006

**Electrical Characteristics for 5-V Supply<sup>(1)</sup>**

$V_+ = 4.5\text{ V to }5.5\text{ V}$ ,  $T_A = -40^\circ\text{C to }85^\circ\text{C}$  (unless otherwise noted)

PARAMETER	SYMBOL	TEST CONDITIONS		T <sub>A</sub>	V <sub>+</sub>	MIN	TYP	MAX	UNIT
Analog Switch									
Analog signal range	V <sub>COM</sub> , V <sub>NO</sub> , V <sub>NC</sub>					0		V <sub>+</sub>	V
Peak ON resistance	r <sub>peak</sub>	0 ≤ (V <sub>NO</sub> or V <sub>NC</sub> ) ≤ V <sub>+</sub> , I <sub>COM</sub> = −100 mA,	Switch ON, See <a href="#">Figure 14</a>	25°C	4.5 V	0.8	1.1		Ω
				Full		1.5			
ON-state resistance	r <sub>on</sub>	V <sub>NO</sub> or V <sub>NC</sub> = 2.5 V, I <sub>COM</sub> = −100 mA,	Switch ON, See <a href="#">Figure 14</a>	25°C	4.5 V	0.7	0.9		Ω
				Full		1.1			
ON-state resistance match between channels	Δr <sub>on</sub>	V <sub>NO</sub> or V <sub>NC</sub> = 2.5 V, I <sub>COM</sub> = −100 mA,	Switch ON, See <a href="#">Figure 14</a>	25°C	4.5 V	0.05	0.1		Ω
				Full		0.1			
ON-state resistance flatness	r <sub>on(flat)</sub>	0 ≤ (V <sub>NO</sub> or V <sub>NC</sub> ) ≤ V <sub>+</sub> , I <sub>COM</sub> = −100 mA,	Switch ON, See <a href="#">Figure 14</a>	25°C	4.5 V	0.15			Ω
				25°C		0.1	0.25		
				Full		0.25			
NC, NO OFF leakage current	I <sub>NC(OFF)</sub> , I <sub>NO(OFF)</sub>	V <sub>NC</sub> or V <sub>NO</sub> = 1 V, V <sub>COM</sub> = 4.5 V, or V <sub>NC</sub> or V <sub>NO</sub> = 4.5 V, V <sub>COM</sub> = 1 V,	Switch OFF, See <a href="#">Figure 15</a>	25°C	5.5 V	−20	2	20	nA
				Full		−150		150	
	I <sub>NC(PWROFF)</sub> , I <sub>NO(PWROFF)</sub>	V <sub>NC</sub> or V <sub>NO</sub> = 0 to 5.5 V, V <sub>COM</sub> = 5.5 V to 0,	Switch OFF, See <a href="#">Figure 15</a>	25°C	0 V	−1		1	μA
				Full		−20		20	
NC, NO ON leakage current	I <sub>NC(ON)</sub> , I <sub>NO(ON)</sub>	V <sub>NC</sub> or V <sub>NO</sub> = 1 V, V <sub>COM</sub> = Open, V <sub>NC</sub> or V <sub>NO</sub> = 4.5 V, V <sub>COM</sub> = Open,	Switch ON, See <a href="#">Figure 16</a>	25°C	5.5 V	−20		20	nA
				Full		−150		150	
COM OFF leakage current	I <sub>COM(PWROFF)</sub>	V <sub>NC</sub> or V <sub>NO</sub> = 0 to 5.5 V, V <sub>COM</sub> = 5.5 V to 0,	Switch OFF, See <a href="#">Figure 15</a>	25°C	0 V	−1	0.1	1	μA
				Full		−20		20	
COM ON leakage current	I <sub>COM(ON)</sub>	V <sub>NC</sub> or V <sub>NO</sub> = Open, V <sub>COM</sub> = 1 V, V <sub>NC</sub> or V <sub>NO</sub> = Open, V <sub>COM</sub> = 4.5 V,	Switch ON, See <a href="#">Figure 16</a>	25°C	5.5 V	−20	2	20	nA
				Full		−150		150	

(1) The algebraic convention, whereby the most negative value is a minimum and the most positive value is a maximum

## Electrical Characteristics for 5-V Supply (continued)

$V_+ = 4.5\text{ V to }5.5\text{ V}$ ,  $T_A = -40^\circ\text{C to }85^\circ\text{C}$  (unless otherwise noted)

PARAMETER	SYMBOL	TEST CONDITIONS		T <sub>A</sub>	V <sub>+</sub>	MIN	TYP	MAX	UNIT
Digital Control Inputs (IN1, IN2) <sup>(2)</sup>									
Input logic high	V <sub>IH</sub>			Full		2.4		5.5	V
Input logic low	V <sub>IL</sub>			Full		0		0.8	V
Input leakage current	I <sub>IH</sub> , I <sub>IL</sub>	V <sub>I</sub> = 5.5 V or 0	25°C	5.5 V	−2		2	nA	
			Full		−1		1	μA	
Dynamic									
Turn-on time	t <sub>ON</sub>	V <sub>COM</sub> = V <sub>+</sub> , R <sub>L</sub> = 50 Ω,  C <sub>L</sub> = 35 pF, See <a href="#">Figure 18</a>	25°C	5 V	1	2.5	5.5	ns	
			Full	4.5 V to 5.5 V	0.5		6.5		
Turn-off time	t <sub>OFF</sub>	V <sub>COM</sub> = V <sub>+</sub> , R <sub>L</sub> = 50 Ω,  C <sub>L</sub> = 35 pF, See <a href="#">Figure 18</a>	25°C	5 V	2	6	10	ns	
			Full	4.5 V to 5.5 V	0.5		13.5		
Make-before break time	t <sub>MBB</sub>	V <sub>COM</sub> = V <sub>+</sub> , R <sub>L</sub> = 50 Ω,  C <sub>L</sub> = 35 pF, See <a href="#">Figure 19</a>	25°C	5 V		5.5		ns	
			Full	4.5 V to 5.5 V	2		9.5		
Charge injection	Q <sub>C</sub>	V <sub>GEN</sub> = 0, R <sub>GEN</sub> = 0,  C <sub>L</sub> = 1 nF, See <a href="#">Figure 23</a>	25°C	5 V		1		pC	
NC, NO OFF capacitance	C <sub>NC(OFF)</sub> , C <sub>NO(OFF)</sub>	V <sub>NC</sub> or V <sub>NO</sub> = V <sub>+</sub> or GND, Switch OFF,  See <a href="#">Figure 17</a>	25°C	5 V		18		pF	
NC, NO ON capacitance	C <sub>NC(ON)</sub> , C <sub>NO(ON)</sub>	V <sub>NC</sub> or V <sub>NO</sub> = V <sub>+</sub> or GND, Switch ON,  See <a href="#">Figure 17</a>	25°C	5 V		55		pF	
COM ON capacitance	C <sub>COM(ON)</sub>	V <sub>COM</sub> = V <sub>+</sub> or GND, Switch ON,  See <a href="#">Figure 17</a>	25°C	5 V		55		pF	
Digital input capacitance	C <sub>I</sub>	V <sub>I</sub> = V <sub>+</sub> or GND,  See <a href="#">Figure 17</a>	25°C	5 V		2		pF	
Bandwidth	BW	R <sub>L</sub> = 50 Ω, Switch ON,  See <a href="#">Figure 20</a>	25°C	5 V		95		MHz	
OFF isolation	O <sub>ISO</sub>	R <sub>L</sub> = 50 Ω, f = 1 MHz,  Switch OFF, See <a href="#">Figure 21</a>	25°C	5 V		−64		dB	
Crosstalk	X <sub>TALK</sub>	R <sub>L</sub> = 50 Ω, f = 1 MHz,  Switch ON, See <a href="#">Figure 22</a>	25°C	5 V		−64		dB	
Total harmonic distortion	THD	R <sub>L</sub> = 600 Ω, C <sub>L</sub> = 50 pF,  f = 20 Hz to 20 kHz, See <a href="#">Figure 24</a>	25°C	5 V		0.004		%	
Supply									
Positive supply current	I <sub>+</sub>	V <sub>I</sub> = V <sub>+</sub> or GND,  Switch ON or OFF	25°C	5.5 V		10		nA	
			Full			0.5		μA	

(2) All unused digital inputs of the device must be held at  $V_+$  or GND to ensure proper device operation. Refer to the TI application report, *Implications of Slow or Floating CMOS Inputs*, literature number SCBA004.

**TS5A23160**  
**0.9-Ω DUAL SPDT ANALOG SWITCH**  
**5-V/3.3-V 2-CHANNEL 2:1 MULTIPLEXER/DEMULTIPLEXER**

SCDS210A–AUGUST 2005–REVISED APRIL 2006

**Electrical Characteristics for 3.3-V Supply<sup>(1)</sup>**

$V_+ = 3\text{ V to }3.6\text{ V}$ ,  $T_A = -40^\circ\text{C to }85^\circ\text{C}$  (unless otherwise noted)

PARAMETER	SYMBOL	TEST CONDITIONS	$T_A$	$V_+$	MIN	TYP	MAX	UNIT
<b>Analog Switch</b>								
Analog signal range	$V_{COM}, V_{NO}, V_{NC}$				0		$V_+$	V
Peak ON resistance	$r_{peak}$	$0 \leq (V_{NO} \text{ or } V_{NC}) \leq V_+$ , $I_{COM} = -100\text{ mA}$ , Switch ON, See <a href="#">Figure 14</a>	25°C Full	3 V		1.3 2	1.6	Ω
ON-state resistance	$r_{on}$	$V_{NO} \text{ or } V_{NC} = 2\text{ V}$ , $I_{COM} = -100\text{ mA}$ , Switch ON, See <a href="#">Figure 14</a>	25°C Full	3 V		1.2 1.7	1.5	Ω
ON-state resistance match between channels	$\Delta r_{on}$	$V_{NO} \text{ or } V_{NC} = 2\text{ V, }0.8\text{ V}$ , $I_{COM} = -100\text{ mA}$ , Switch ON, See <a href="#">Figure 14</a>	25°C Full	3 V		0.01 0.15	0.15	Ω
ON-state resistance flatness	$r_{on(flat)}$	$0 \leq (V_{NO} \text{ or } V_{NC}) \leq V_+$ , $I_{COM} = -100\text{ mA}$ , Switch ON, See <a href="#">Figure 14</a>	25°C Full	3 V		0.2 0.15 0.3		Ω
NC, NO OFF leakage current	$I_{NC(OFF)}, I_{NO(OFF)}$	$V_{NC} \text{ or } V_{NO} = 1\text{ V}$ , $V_{COM} = 3\text{ V}$ , or $V_{NC} \text{ or } V_{NO} = 3\text{ V}$ , $V_{COM} = 1\text{ V}$ , Switch OFF, See <a href="#">Figure 15</a>	25°C Full	3.6 V	-20 -50	2	20 50	nA
			25°C Full	0 V	-1 -15	0.2	1 15	μA
NC, NO ON leakage current	$I_{NC(ON)}, I_{NO(ON)}$	$V_{NC} \text{ or } V_{NO} = 1\text{ V}$ , $V_{COM} = \text{Open}$ , or $V_{NC} \text{ or } V_{NO} = 3\text{ V}$ , $V_{COM} = \text{Open}$ , Switch ON, See <a href="#">Figure 16</a>	25°C Full	3.6 V	-20 -20	2	20 20	nA
COM OFF leakage current	$I_{COM(PWROFF)}$	$V_{NC} \text{ or } V_{NO} = 3.6\text{ V to }0$ , $V_{COM} = 0\text{ to }3.6\text{ V}$ , Switch OFF, See <a href="#">Figure 15</a>	25°C Full	0 V	-1 -15	0.2	1 15	μA
COM ON leakage current	$I_{COM(ON)}$	$V_{NC} \text{ or } V_{NO} = \text{Open}$ , $V_{COM} = 1\text{ V}$ , $V_{NC} \text{ or } V_{NO} = \text{Open}$ , $V_{COM} = 3\text{ V}$ , Switch ON, See <a href="#">Figure 16</a>	25°C Full	3.6 V	-20 -20	2	20 20	nA

(1) The algebraic convention, whereby the most negative value is a minimum and the most positive value is a maximum

## Electrical Characteristics for 3.3-V Supply (continued)

$V_+ = 3\text{ V to }3.6\text{ V}$ ,  $T_A = -40^\circ\text{C to }85^\circ\text{C}$  (unless otherwise noted)

PARAMETER	SYMBOL	TEST CONDITIONS		T <sub>A</sub>	V <sub>+</sub>	MIN	TYP	MAX	UNIT
Digital Control Inputs (IN1, IN2) <sup>(2)</sup>									
Input logic high	V <sub>IH</sub>			Full		2		5.5	V
Input logic low	V <sub>IL</sub>			Full		0		0.8	V
Input leakage current	I <sub>IH</sub> , I <sub>IL</sub>	V <sub>I</sub> = 5.5 V or 0	25°C	3.6 V	−2		2	nA	
			Full		−20		20		
Dynamic									
Turn-on time	t <sub>ON</sub>	V <sub>COM</sub> = V <sub>+</sub> , R <sub>L</sub> = 50 Ω,  C <sub>L</sub> = 35 pF, See <a href="#">Figure 18</a>	25°C	3.3 V	1.5	3.5	6.5	ns	
			Full	3 V to 3.6 V	0.5		8		
Turn-off time	t <sub>OFF</sub>	V <sub>COM</sub> = V <sub>+</sub> , R <sub>L</sub> = 50 Ω,  C <sub>L</sub> = 35 pF, See <a href="#">Figure 18</a>	25°C	3.3 V	2.5	7	11.5	ns	
			Full	3 V to 3.6 V	1		14.5		
Make-before break time	t <sub>MBB</sub>	V <sub>COM</sub> = V <sub>+</sub> , R <sub>L</sub> = 50 Ω,  C <sub>L</sub> = 35 pF, See <a href="#">Figure 19</a>	25°C	3.3 V		5.5		ns	
			Full	3 V to 3.6 V	2		9.5		
Charge injection	Q <sub>C</sub>	V <sub>GEN</sub> = 0, R <sub>GEN</sub> = 0,  C <sub>L</sub> = 1 nF, See <a href="#">Figure 23</a>	25°C	3.3 V		3		pC	
NC, NO OFF capacitance	C <sub>NC(OFF)</sub> , C <sub>NO(OFF)</sub>	V <sub>NC</sub> or V <sub>NO</sub> = V <sub>+</sub> or GND, Switch OFF,  See <a href="#">Figure 17</a>	25°C	3.3 V		18		pF	
NC, NO ON capacitance	C <sub>NC(ON)</sub> , C <sub>NO(ON)</sub>	V <sub>NC</sub> or V <sub>NO</sub> = V <sub>+</sub> or GND, Switch ON,  See <a href="#">Figure 17</a>	25°C	3.3 V		56		pF	
COM ON capacitance	C <sub>COM(ON)</sub>	V <sub>COM</sub> = V <sub>+</sub> or GND, Switch ON,  See <a href="#">Figure 17</a>	25°C	3.3 V		56		pF	
Digital input capacitance	C <sub>I</sub>	V <sub>I</sub> = V <sub>+</sub> or GND,  See <a href="#">Figure 17</a>	25°C	3.3 V		2		pF	
Bandwidth	BW	R <sub>L</sub> = 50 Ω, Switch ON,  See <a href="#">Figure 20</a>	25°C	3.3 V		95		MHz	
OFF isolation	O <sub>ISO</sub>	R <sub>L</sub> = 50 Ω, f = 1 MHz,  Switch OFF, See <a href="#">Figure 21</a>	25°C	3.3 V		−64		dB	
Crosstalk	X <sub>TALK</sub>	R <sub>L</sub> = 50 Ω, f = 1 MHz,  Switch ON, See <a href="#">Figure 22</a>	25°C	3.3 V		−64		dB	
Total harmonic distortion	THD	R <sub>L</sub> = 600 Ω, C <sub>L</sub> = 50 pF,  f = 20 Hz to 20 kHz, See <a href="#">Figure 24</a>	25°C	3.3 V		0.01		%	
Supply									
Positive supply current	I <sub>+</sub>	V <sub>I</sub> = V <sub>+</sub> or GND,  Switch ON or OFF	25°C	3.6 V		10		nA	
			Full			100			

(2) All unused digital inputs of the device must be held at  $V_+$  or GND to ensure proper device operation. Refer to the TI application report, *Implications of Slow or Floating CMOS Inputs*, literature number SCBA004.

**TS5A23160**  
**0.9-Ω DUAL SPDT ANALOG SWITCH**  
**5-V/3.3-V 2-CHANNEL 2:1 MULTIPLEXER/DEMULTIPLEXER**

SCDS210A–AUGUST 2005–REVISED APRIL 2006

**Electrical Characteristics for 2.5-V Supply<sup>(1)</sup>**

$V_+ = 2.3 \text{ V to } 2.7 \text{ V}$ ,  $T_A = -40^\circ\text{C to } 85^\circ\text{C}$  (unless otherwise noted)

PARAMETER	SYMBOL	TEST CONDITIONS	$T_A$	$V_+$	MIN	TYP	MAX	UNIT
<b>Analog Switch</b>								
Analog signal range	$V_{\text{COM}}, V_{\text{NO}}, V_{\text{NC}}$				0		$V_+$	V
Peak ON resistance	$r_{\text{peak}}$	$0 \leq (V_{\text{NO}} \text{ or } V_{\text{NC}}) \leq V_+$ , $I_{\text{COM}} = -8 \text{ mA}$ , Switch ON, See <a href="#">Figure 14</a>	25°C Full	2.3 V		1.8	2.5 2.7	Ω
ON-state resistance	$r_{\text{on}}$	$V_{\text{NO}} \text{ or } V_{\text{NC}} = 1.8 \text{ V}$ , $I_{\text{COM}} = -8 \text{ mA}$ , Switch ON, See <a href="#">Figure 14</a>	25°C Full	2.3 V		1.5	2 2.4	Ω
ON-state resistance match between channels	$\Delta r_{\text{on}}$	$V_{\text{NO}} \text{ or } V_{\text{NC}} = 1.8 \text{ V}$ , $0.8 \text{ V}$ , $I_{\text{COM}} = -8 \text{ mA}$ , Switch ON, See <a href="#">Figure 14</a>	25°C Full	2.3 V		0.15	0.2 0.2	Ω
ON-state resistance flatness	$r_{\text{on(flat)}}$	$0 \leq (V_{\text{NO}} \text{ or } V_{\text{NC}}) \leq V_+$ , $I_{\text{COM}} = -8 \text{ mA}$ , Switch ON, See <a href="#">Figure 14</a>	25°C	2.3 V		0.6		Ω
		$V_{\text{NO}} \text{ or } V_{\text{NC}} = 0.8 \text{ V}$ , $1.8 \text{ V}$ , $I_{\text{COM}} = -8 \text{ mA}$ , Switch ON, See <a href="#">Figure 14</a>	25°C			0.6	1	
			Full				1	
NC, NO OFF leakage current	$I_{\text{NC(OFF)}}, I_{\text{NO(OFF)}}$	$V_{\text{NC}} \text{ or } V_{\text{NO}} = 0.5 \text{ V}$ , $V_{\text{COM}} = 2.3 \text{ V}$ , or $V_{\text{NC}} \text{ or } V_{\text{NO}} = 2.3 \text{ V}$ , $V_{\text{COM}} = 0.5 \text{ V}$ , Switch OFF, See <a href="#">Figure 15</a>	25°C	2.7 V	-20	2	20	μA
			Full		-50		50	
	$I_{\text{NC(PWROFF)}}, I_{\text{NO(PWROFF)}}$	$V_{\text{NC}} \text{ or } V_{\text{NO}} = 0 \text{ to } 2.7 \text{ V}$ , $V_{\text{COM}} = 2.7 \text{ V to } 0$ , Switch OFF, See <a href="#">Figure 15</a>	25°C	0 V	-1	0.1	1	μA
			Full		-10		10	
NC, NO ON leakage current	$I_{\text{NC(ON)}}, I_{\text{NO(ON)}}$	$V_{\text{NC}} \text{ or } V_{\text{NO}} = 0.5 \text{ V}$ , $V_{\text{COM}} = \text{Open}$ , or $V_{\text{NC}} \text{ or } V_{\text{NO}} = 2.3 \text{ V}$ , $V_{\text{COM}} = \text{Open}$ , Switch ON, See <a href="#">Figure 16</a>	25°C	2.7 V	-20	2	20	nA
			Full		-20		20	
COM OFF leakage current	$I_{\text{COM(PWROFF)}}$	$V_{\text{NC}} \text{ or } V_{\text{NO}} = 2.7 \text{ V to } 0$ , $V_{\text{COM}} = 0 \text{ to } 2.7 \text{ V}$ , Switch OFF, See <a href="#">Figure 15</a>	25°C	0 V	-1	0.1	1	nA
			Full		-10		10	
COM ON leakage current	$I_{\text{COM(ON)}}$	$V_{\text{NC}} \text{ or } V_{\text{NO}} = \text{Open}$ , $V_{\text{COM}} = 0.5 \text{ V}$ , $V_{\text{NC}} \text{ or } V_{\text{NO}} = \text{Open}$ , $V_{\text{COM}} = 2.3 \text{ V}$ , Switch ON, See <a href="#">Figure 16</a>	25°C	2.7 V	-20	2	20	nA
			Full		-20		20	

(1) The algebraic convention, whereby the most negative value is a minimum and the most positive value is a maximum



## Electrical Characteristics for 2.5-V Supply (continued)

$V_+ = 2.3 \text{ V to } 2.7 \text{ V}$ ,  $T_A = -40^\circ\text{C to } 85^\circ\text{C}$  (unless otherwise noted)

PARAMETER	SYMBOL	TEST CONDITIONS		T <sub>A</sub>	V <sub>+</sub>	MIN	TYP	MAX	UNIT
Digital Control Inputs (IN1, IN2) <sup>(2)</sup>									
Input logic high	V <sub>IH</sub>			Full		1.8		5.5	V
Input logic low	V <sub>IL</sub>			Full		0		0.6	V
Input leakage current	I <sub>IH</sub> , I <sub>IL</sub>	V <sub>I</sub> = 5.5 V or 0		25°C	2.7 V	−2		2	nA
				Full		−20		20	
Dynamic									
Turn-on time	t <sub>ON</sub>	V <sub>COM</sub> = V <sub>+</sub> , R <sub>L</sub> = 50 Ω,	C <sub>L</sub> = 35 pF, See <a href="#">Figure 18</a>	25°C	2.5 V	2	4.5	8.5	ns
				Full	2.3 V to 2.7 V	1		10.5	
Turn-off time	t <sub>OFF</sub>	V <sub>COM</sub> = V <sub>+</sub> , R <sub>L</sub> = 50 Ω,	C <sub>L</sub> = 35 pF, See <a href="#">Figure 18</a>	25°C	2.5 V	3.5	8.5	13.5	ns
				Full	2.3 V to 2.7 V	1.5		16.5	
Make-before break time	t <sub>MBB</sub>	V <sub>COM</sub> = V <sub>+</sub> , R <sub>L</sub> = 50 Ω,	C <sub>L</sub> = 35 pF, See <a href="#">Figure 19</a>	25°C	2.5 V		6		ns
				Full	2.3 V to 2.7 V	8.5		10	
Charge injection	Q <sub>C</sub>	V <sub>GEN</sub> = 0, R <sub>GEN</sub> = 0,	C <sub>L</sub> = 1 nF, See <a href="#">Figure 23</a>	25°C	2.5 V		4.5		pC
NC, NO OFF capacitance	C <sub>NC(OFF)</sub> , C <sub>NO(OFF)</sub>	V <sub>NC</sub> or V <sub>NO</sub> = V <sub>+</sub> or GND, Switch OFF,	See <a href="#">Figure 17</a>	25°C	2.5 V		18.5		pF
NC, NO ON capacitance	C <sub>NC(ON)</sub> , C <sub>NO(ON)</sub>	V <sub>NC</sub> or V <sub>NO</sub> = V <sub>+</sub> or GND, Switch ON,	See <a href="#">Figure 17</a>	25°C	2.5 V		56.5		pF
COM ON capacitance	C <sub>COM(ON)</sub>	V <sub>COM</sub> = V <sub>+</sub> or GND, Switch ON,	See <a href="#">Figure 17</a>	25°C	2.5 V		56.5		pF
Digital input capacitance	C <sub>I</sub>	V <sub>I</sub> = V <sub>+</sub> or GND,	See <a href="#">Figure 17</a>	25°C	2.5 V		2		pF
Bandwidth	BW	R <sub>L</sub> = 50 Ω, Switch ON,	See <a href="#">Figure 20</a>	25°C	2.5 V		100		MHz
OFF isolation	O <sub>ISO</sub>	R <sub>L</sub> = 50 Ω, f = 1 MHz,	Switch OFF, See <a href="#">Figure 21</a>	25°C	2.5 V		−64		dB
Crosstalk	X <sub>TALK</sub>	R <sub>L</sub> = 50 Ω, f = 1 MHz,	Switch ON, See <a href="#">Figure 22</a>	25°C	2.5 V		−64		dB
Total harmonic distortion	THD	R <sub>L</sub> = 600 Ω, C <sub>L</sub> = 50 pF,	f = 20 Hz to 20 kHz, See <a href="#">Figure 24</a>	25°C	2.5 V		0.020		%
Supply									
Positive supply current	I <sub>+</sub>	V <sub>I</sub> = V <sub>+</sub> or GND,	Switch ON or OFF	25°C	2.7 V	10		50	nA
				Full					

(2) All unused digital inputs of the device must be held at  $V_+$  or GND to ensure proper device operation. Refer to the TI application report, *Implications of Slow or Floating CMOS Inputs*, literature number SCBA004.

**TS5A23160**  
**0.9-Ω DUAL SPDT ANALOG SWITCH**  
**5-V/3.3-V 2-CHANNEL 2:1 MULTIPLEXER/DEMULTIPLEXER**

SCDS210A–AUGUST 2005–REVISED APRIL 2006

**Electrical Characteristics for 1.8-V Supply<sup>(1)</sup>**

$V_+ = 1.65\text{ V to }1.95\text{ V}$ ,  $T_A = -40^\circ\text{C to }85^\circ\text{C}$  (unless otherwise noted)

PARAMETER	SYMBOL	TEST CONDITIONS		T <sub>A</sub>	V <sub>+</sub>	MIN	TYP	MAX	UNIT
Analog Switch									
Analog signal range	V <sub>COM</sub> , V <sub>NO</sub> , V <sub>NC</sub>					0		V <sub>+</sub>	V
Peak ON resistance	r <sub>peak</sub>	0 ≤ (V <sub>NO</sub> or V <sub>NC</sub> ) ≤ V <sub>+</sub> , I <sub>COM</sub> = −2 mA,	Switch ON, See <a href="#">Figure 14</a>	25°C	1.65 V	5		30	Ω
				Full					
ON-state resistance	r <sub>on</sub>	V <sub>NO</sub> or V <sub>NC</sub> = 1.5 V, I <sub>COM</sub> = −2 mA,	Switch ON, See <a href="#">Figure 14</a>	25°C	1.65 V	2	2.5	3.5	Ω
				Full					
ON-state resistance match between channels	Δr <sub>on</sub>	V <sub>NO</sub> or V <sub>NC</sub> = 1.5 V, I <sub>COM</sub> = −8 V mA,	Switch ON, See <a href="#">Figure 14</a>	25°C	1.65 V	0.15	0.4	0.4	Ω
				Full					
ON-state resistance flatness	r <sub>on(flat)</sub>	0 ≤ (V <sub>NO</sub> or V <sub>NC</sub> ) ≤ V <sub>+</sub> , I <sub>COM</sub> = −2 mA,	Switch ON, See <a href="#">Figure 14</a>	25°C	1.65 V	5		1	Ω
				25°C		4.5			
				Full					
NC, NO OFF leakage current	I <sub>NC(OFF)</sub> , I <sub>NO(OFF)</sub>	V <sub>NC</sub> or V <sub>NO</sub> = 0.3 V, V <sub>COM</sub> = 1.65 V, or V <sub>NC</sub> or V <sub>NO</sub> = 1.65 V, V <sub>COM</sub> = 0.3 V,	Switch OFF, See <a href="#">Figure 15</a>	25°C	1.95 V	−20	2	20	nA
				Full		−50	50		
	I <sub>NC(PWROFF)</sub> , I <sub>NO(PWROFF)</sub>	V <sub>NC</sub> or V <sub>NO</sub> = 0 to 1.95 V, V <sub>COM</sub> = 1.95 V to 0,	Switch OFF, See <a href="#">Figure 15</a>	25°C	0 V	−1	0.1	1	μA
				Full		−5	5		
NC, NO ON leakage current	I <sub>NC(ON)</sub> , I <sub>NO(ON)</sub>	V <sub>NC</sub> or V <sub>NO</sub> = 0.3 V, V <sub>COM</sub> = Open, or V <sub>NC</sub> or V <sub>NO</sub> = 1.65 V, V <sub>COM</sub> = Open,	Switch ON, See <a href="#">Figure 16</a>	25°C	1.95 V	−20	2	20	nA
				Full		−20	20		
COM OFF leakage current	I <sub>COM(PWROFF)</sub>	V <sub>NC</sub> or V <sub>NO</sub> = 1.95 V to 0, V <sub>COM</sub> = 0 to 1.95 V,	Switch OFF, See <a href="#">Figure 15</a>	25°C	0 V	−1	0.1	1	μA
				Full		−5	5		
COM ON leakage current	I <sub>COM(ON)</sub>	V <sub>NC</sub> or V <sub>NO</sub> = Open, V <sub>COM</sub> = 0.3 V, V <sub>NC</sub> or V <sub>NO</sub> = Open, V <sub>COM</sub> = 1.65 V,	Switch ON, See <a href="#">Figure 16</a>	25°C	1.95 V	−20	2	20	nA
				Full		−20	20		

(1) The algebraic convention, whereby the most negative value is a minimum and the most positive value is a maximum

## Electrical Characteristics for 1.8-V Supply (continued)

$V_+ = 1.65\text{ V}$  to  $1.95\text{ V}$ ,  $T_A = -40^\circ\text{C}$  to  $85^\circ\text{C}$  (unless otherwise noted)

PARAMETER	SYMBOL	TEST CONDITIONS		T <sub>A</sub>	V <sub>+</sub>	MIN	TYP	MAX	UNIT
Digital Control Inputs (IN1, IN2) <sup>(2)</sup>									
Input logic high	V <sub>IH</sub>			Full		1.5		5.5	V
Input logic low	V <sub>IL</sub>			Full		0		0.6	V
Input leakage current	I <sub>IH</sub> , I <sub>IL</sub>	V <sub>I</sub> = 5.5 V or 0	25°C	1.95 V	−2		2	nA	
			Full		−20		20		
Dynamic									
Turn-on time	t <sub>ON</sub>	V <sub>COM</sub> = V <sub>+</sub> , R <sub>L</sub> = 50 Ω,  C <sub>L</sub> = 35 pF, See <a href="#">Figure 18</a>	25°C	1.8 V	2.5	10	14.5	ns	
			Full	1.65 V to 1.95 V	1		17		
Turn-off time	t <sub>OFF</sub>	V <sub>COM</sub> = V <sub>+</sub> , R <sub>L</sub> = 50 Ω,  C <sub>L</sub> = 35 pF, See <a href="#">Figure 18</a>	25°C	1.8 V	6.5	12.5	21.5	ns	
			Full	1.65 V to 1.95 V	2		24		
Make-before break time	t <sub>MBB</sub>	V <sub>COM</sub> = V <sub>+</sub> , R <sub>L</sub> = 50 Ω,  C <sub>L</sub> = 35 pF, See <a href="#">Figure 19</a>	25°C	1.8 V		6.5		ns	
			Full	1.65 V to 1.95 V	2.5		14		
Charge injection	Q <sub>C</sub>	V <sub>GEN</sub> = 0, R <sub>GEN</sub> = 0,  C <sub>L</sub> = 1 nF, See <a href="#">Figure 23</a>	25°C	1.8 V		5.5		pC	
NC, NO OFF capacitance	C <sub>NC(OFF)</sub> , C <sub>NO(OFF)</sub>	V <sub>NC</sub> or V <sub>NO</sub> = V <sub>+</sub> or GND, Switch OFF,  See <a href="#">Figure 17</a>	25°C	1.8 V		18.5		pF	
NC, NO ON capacitance	C <sub>NC(ON)</sub> , C <sub>NO(ON)</sub>	V <sub>NC</sub> or V <sub>NO</sub> = V <sub>+</sub> or GND, Switch ON,  See <a href="#">Figure 17</a>	25°C	1.8 V		56.5		pF	
COM ON capacitance	C <sub>COM(ON)</sub>	V <sub>COM</sub> = V <sub>+</sub> or GND, Switch ON,  See <a href="#">Figure 17</a>	25°C	1.8 V		56.5		pF	
Digital input capacitance	C <sub>I</sub>	V <sub>I</sub> = V <sub>+</sub> or GND,  See <a href="#">Figure 17</a>	25°C	1.8 V		2		pF	
Bandwidth	BW	R <sub>L</sub> = 50 Ω, Switch ON,  See <a href="#">Figure 20</a>	25°C	1.8 V		100		MHz	
OFF isolation	O <sub>ISO</sub>	R <sub>L</sub> = 50 Ω, f = 1 MHz, Switch OFF, See <a href="#">Figure 21</a>	25°C	1.8 V		−64		dB	
Crosstalk	X <sub>TALK</sub>	R <sub>L</sub> = 50 Ω, f = 1 MHz, Switch ON, See <a href="#">Figure 22</a>	25°C	1.8 V		−64		dB	
Total harmonic distortion	THD	R <sub>L</sub> = 600 Ω, C <sub>L</sub> = 50 pF,  f = 20 Hz to 20 kHz, See <a href="#">Figure 24</a>	25°C	1.8 V		0.060		%	
Supply									
Positive supply current	I <sub>+</sub>	V <sub>I</sub> = V <sub>+</sub> or GND,  Switch ON or OFF	25°C	1.95 V				nA	
			Full		50				

(2) All unused digital inputs of the device must be held at  $V_+$  or GND to ensure proper device operation. Refer to the TI application report, *Implications of Slow or Floating CMOS Inputs*, literature number SCBA004.

## TYPICAL PERFORMANCE

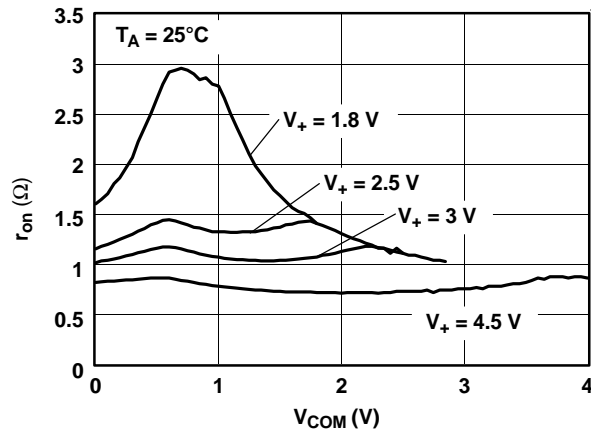


Figure 1.  $r_{on}$  vs  $V_{COM}$

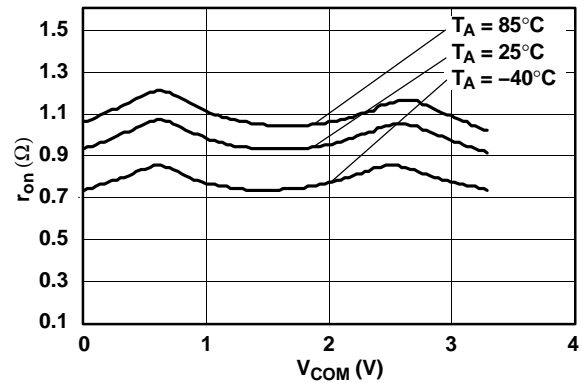


Figure 2.  $r_{on}$  vs  $V_{COM}$  ( $V_+ = 3.3\text{ V}$ )

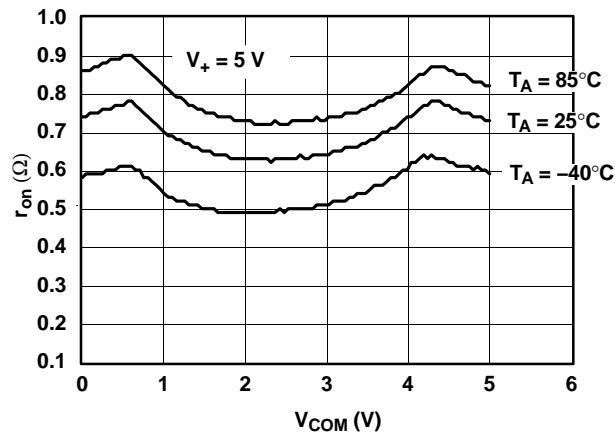


Figure 3.  $r_{on}$  vs  $V_{COM}$

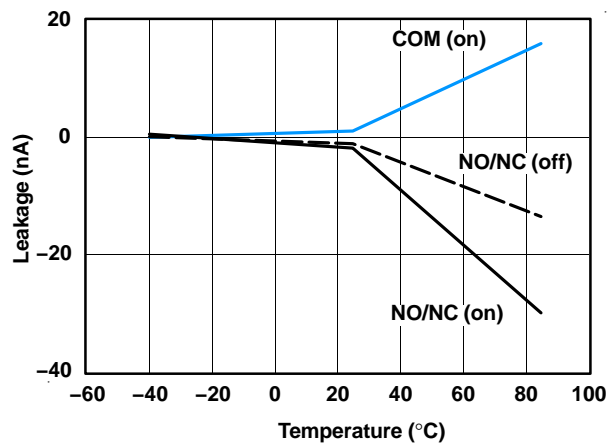


Figure 4. Leakage Current vs Temperature

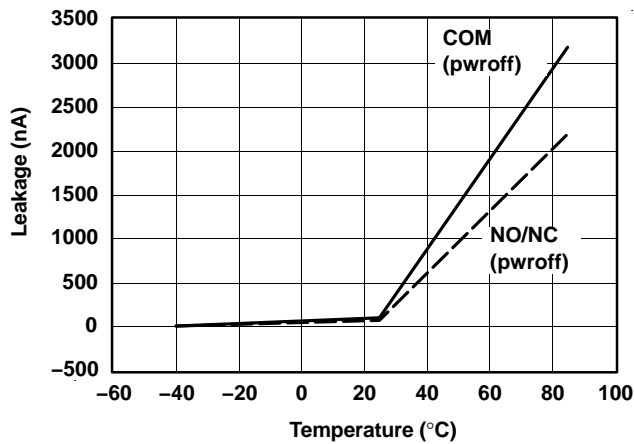


Figure 5. Leakage Current vs Temperature

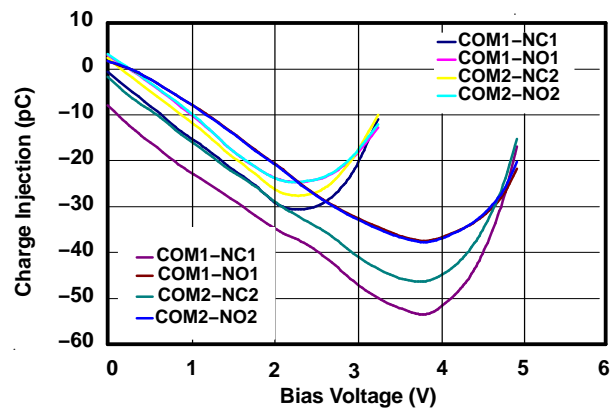


Figure 6. Charge Injection ( $Q_C$ ) vs  $V_{COM}$

# TYPICAL PERFORMANCE (continued)

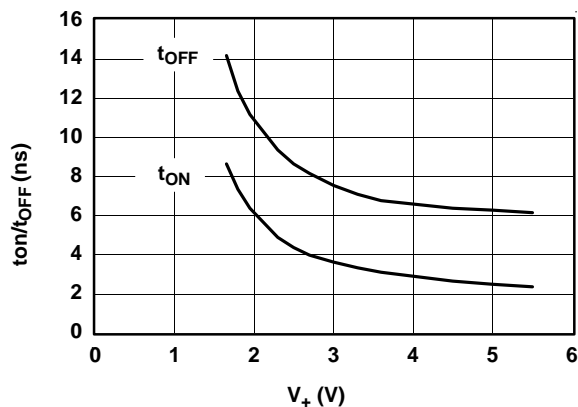


Figure 7. t<sub>ON</sub> and t<sub>OFF</sub> vs Supply Voltage

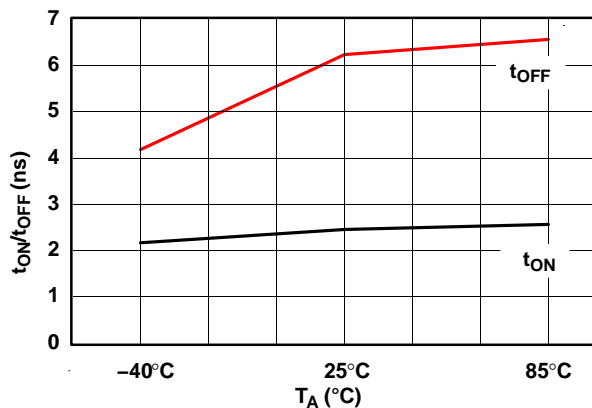


Figure 8. t<sub>ON</sub> and t<sub>OFF</sub> vs Temperature (V<sub>+</sub> = 5 V)

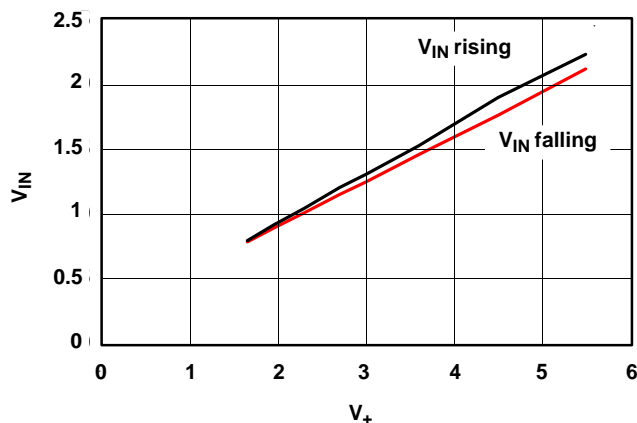


Figure 9. Logic Threshold vs V<sub>+</sub>

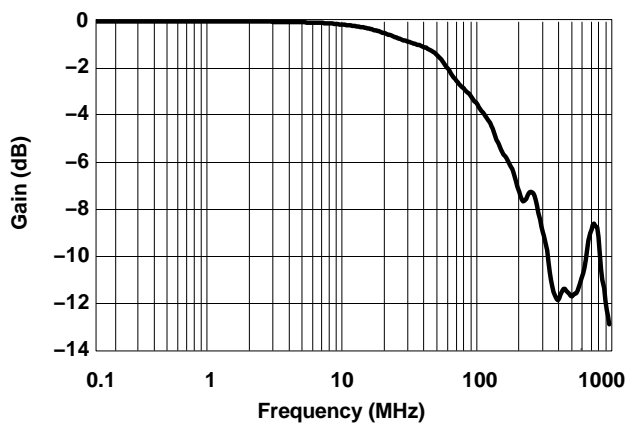


Figure 10. Bandwidth (Gain vs Frequency)  
(V<sub>+</sub> = 5 V)

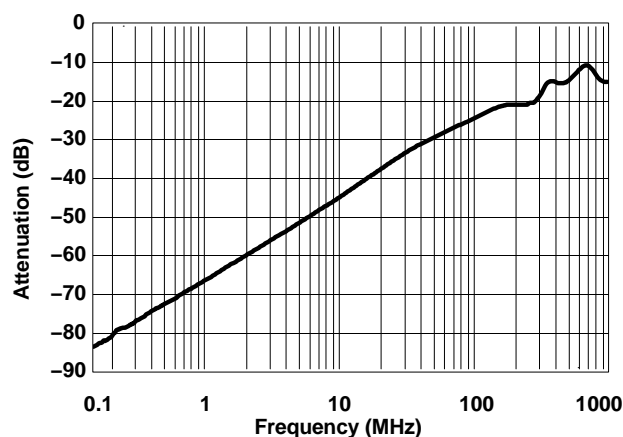


Figure 11. OFF Isolation vs Frequency

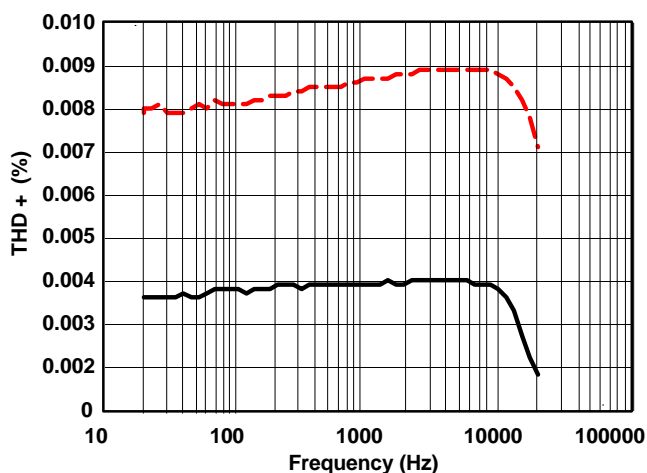
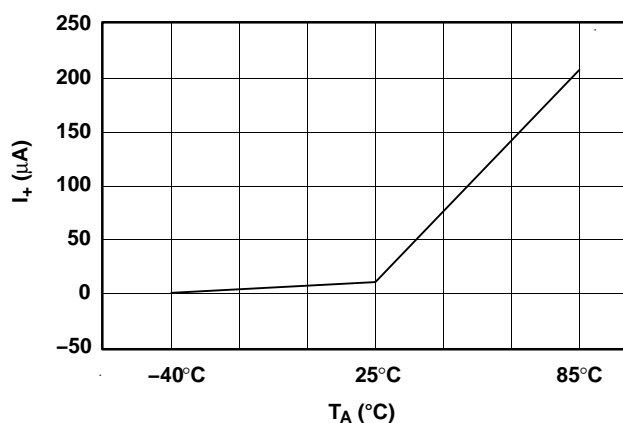


Figure 12. Total Harmonic Distortion  
vs Frequency (V<sub>+</sub> = 5 V)

### TYPICAL PERFORMANCE (continued)



**Figure 13. Power-Supply Current vs Temperature ( $V_+ = 5\text{ V}$ )**

### PIN DESCRIPTION

PIN	NAME	DESCRIPTION
1	IN1	Digital control to connect COM to NO or NC
2	NO1	Normally open
3	GND	Digital ground
4	NO2	Normally open
5	IN2	Digital control to connect COM to NO or NC
6	COM2	Common
7	NC2	Normally closed
8	$V_+$	Power supply
9	NC1	Normally closed
10	COM1	Power supply

## PARAMETER DESCRIPTION

SYMBOL	DESCRIPTION
$V_{COM}$	Voltage at COM
$V_{NC}$	Voltage at NC
$V_{NO}$	Voltage at NO
$r_{on}$	Resistance between COM and NC or COM and NO ports when the channel is ON
$r_{peak}$	Peak on-state resistance over a specified voltage range
$\Delta r_{on}$	Difference of $r_{on}$ between channels in a specific device
$r_{on(flat)}$	Difference between the maximum and minimum value of $r_{on}$ in a channel over the specified range of conditions
$I_{NC(OFF)}$	Leakage current measured at the NC port, with the corresponding channel (NC to COM) in the OFF state under worst-case input and output conditions
$I_{NC(PWROFF)}$	Leakage current measured at the NC port during the power-down condition, $V_+ = 0$
$I_{NO(OFF)}$	Leakage current measured at the NO port, with the corresponding channel (NO to COM) in the OFF state under worst-case input and output conditions
$I_{NO(PWROFF)}$	Leakage current measured at the NO port during the power-down condition, $V_+ = 0$
$I_{NC(ON)}$	Leakage current measured at the NC port, with the corresponding channel (NC to COM) in the ON state and the output (COM) open
$I_{NO(ON)}$	Leakage current measured at the NO port, with the corresponding channel (NO to COM) in the ON state and the output (COM) open
$I_{COM(PWROFF)}$	Leakage current measured at the COM port during the power-down condition, $V_+ = 0$
$I_{COM(ON)}$	Leakage current measured at the COM port, with the corresponding channel (COM to NC or COM to NO) in the ON state and the output (NC or NO) open
$V_{IH}$	Minimum input voltage for logic high for the control input (IN)
$V_{IL}$	Maximum input voltage for logic low for the control input (IN)
$V_I$	Voltage at the control input (IN)
$I_{IH}, I_{IL}$	Leakage current measured at the control input (IN)
$t_{ON}$	Turn-on time for the switch. This parameter is measured under the specified range of conditions and by the propagation delay between the digital control (IN) signal and analog output (COM, NC, or NO) signal when the switch is turning ON.
$t_{OFF}$	Turn-off time for the switch. This parameter is measured under the specified range of conditions and by the propagation delay between the digital control (IN) signal and analog output (COM, NC, or NO) signal when the switch is turning OFF.
$t_{MBB}$	Make-before-break time. This parameter is measured under the specified range of conditions and by the propagation delay between the output of two adjacent analog channels (NC and NO) when the control signal changes state.
$Q_C$	Charge injection is a measurement of unwanted signal coupling from the control (IN) input to the analog (NC, NO, or COM) output. This is measured in coulomb (C) and measured by the total charge induced due to switching of the control input. Charge injection, $Q_C = C_L \times \Delta V_{COM}$ . $C_L$ is the load capacitance and $\Delta V_{COM}$ is the change in analog output voltage.
$C_{NC(OFF)}$	Capacitance at the NC port when the corresponding channel (NC to COM) is OFF
$C_{NO(OFF)}$	Capacitance at the NO port when the corresponding channel (NO to COM) is OFF
$C_{NC(ON)}$	Capacitance at the NC port when the corresponding channel (NC to COM) is ON
$C_{NO(ON)}$	Capacitance at the NO port when the corresponding channel (NO to COM) is ON
$C_{COM(ON)}$	Capacitance at the COM port when the corresponding channel (COM to NC or COM to NO) is ON
$C_I$	Capacitance of control input (IN)
$O_{ISO}$	OFF isolation of the switch is a measurement of OFF-state switch impedance. This is measured in dB in a specific frequency, with the corresponding channel (NC to COM or NO to COM) in the OFF state.
$X_{TALK}$	Crosstalk is a measurement of unwanted signal coupling from an ON channel to an OFF channel (NC to NO or NO to NC). This is measured in a specific frequency and in dB.
BW	Bandwidth of the switch. This is the frequency in which the gain of an ON channel is –3 dB below the DC gain.
THD	Total harmonic distortion describes the signal distortion caused by the analog switch. This is defined as the ratio of root mean square (RMS) value of the second, third, and higher harmonic to the absolute magnitude of the fundamental harmonic.
$I_+$	Static power-supply current with the control (IN) pin at $V_+$ or GND

## PARAMETER MEASUREMENT INFORMATION

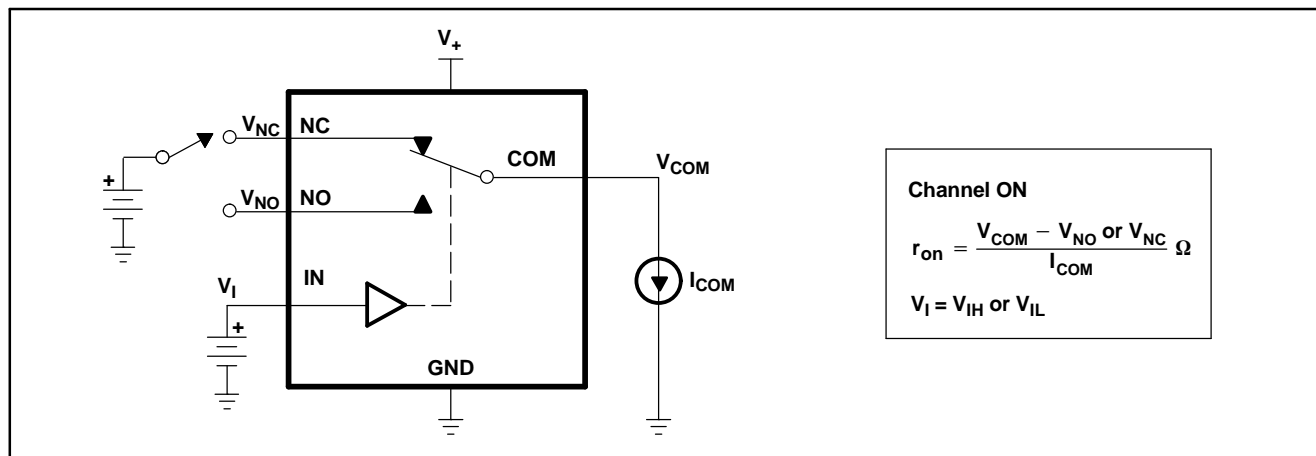


Figure 14. ON-State Resistance ( $r_{on}$ )

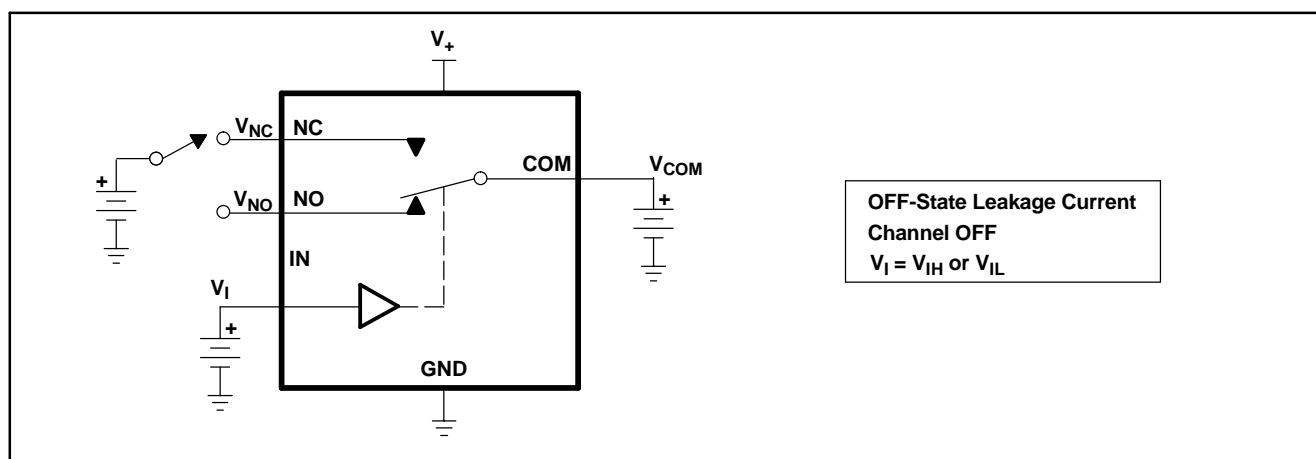


Figure 15. OFF-State Leakage Current ( $I_{NC(OFF)}$ ,  $I_{NC(PWROFF)}$ ,  $I_{NO(OFF)}$ ,  $I_{NO(PWROFF)}$ ,  $I_{COM(OFF)}$ ,  $I_{COM(PWROFF)}$ )

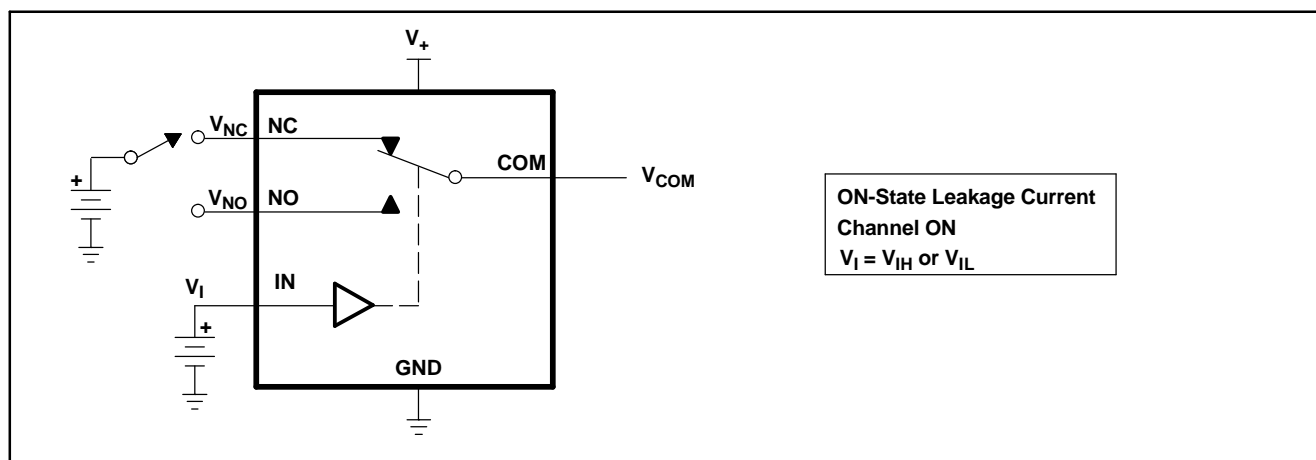


Figure 16. ON-State Leakage Current ( $I_{COM(ON)}$ ,  $I_{NC(ON)}$ ,  $I_{NO(ON)}$ )



## PARAMETER MEASUREMENT INFORMATION (continued)

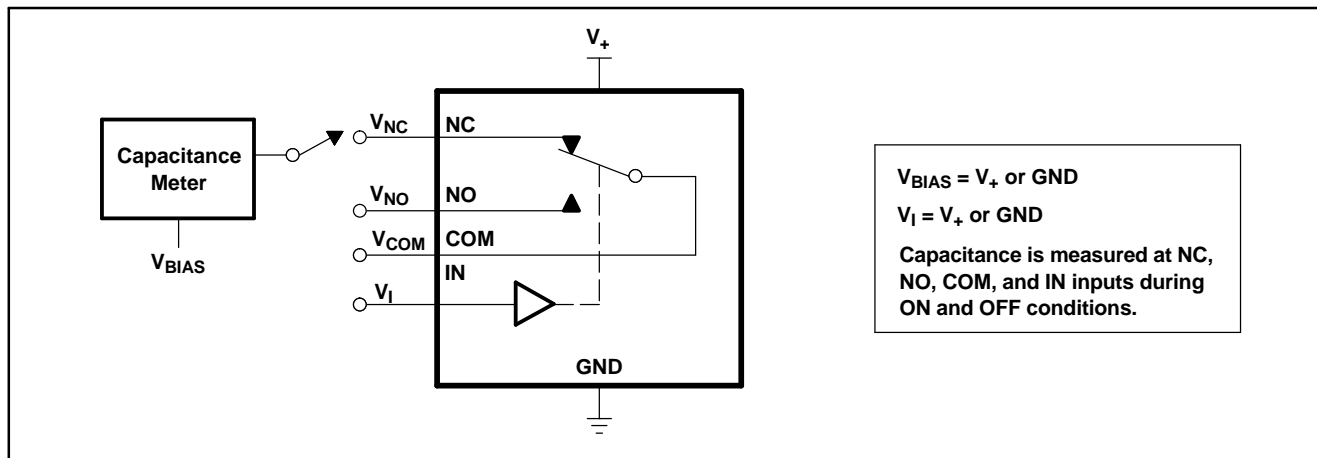
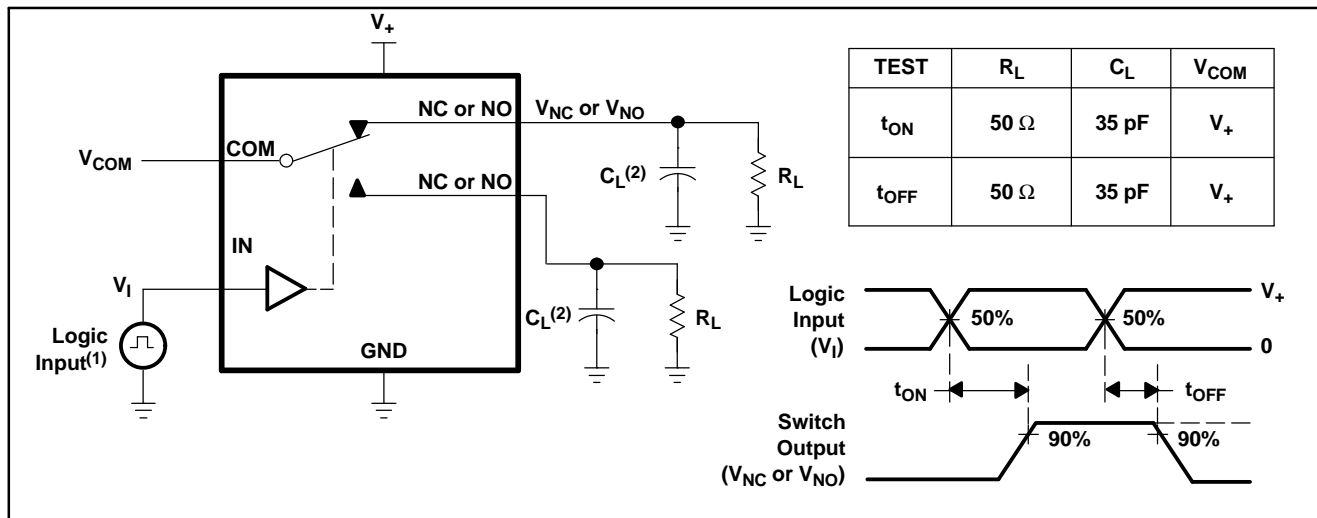


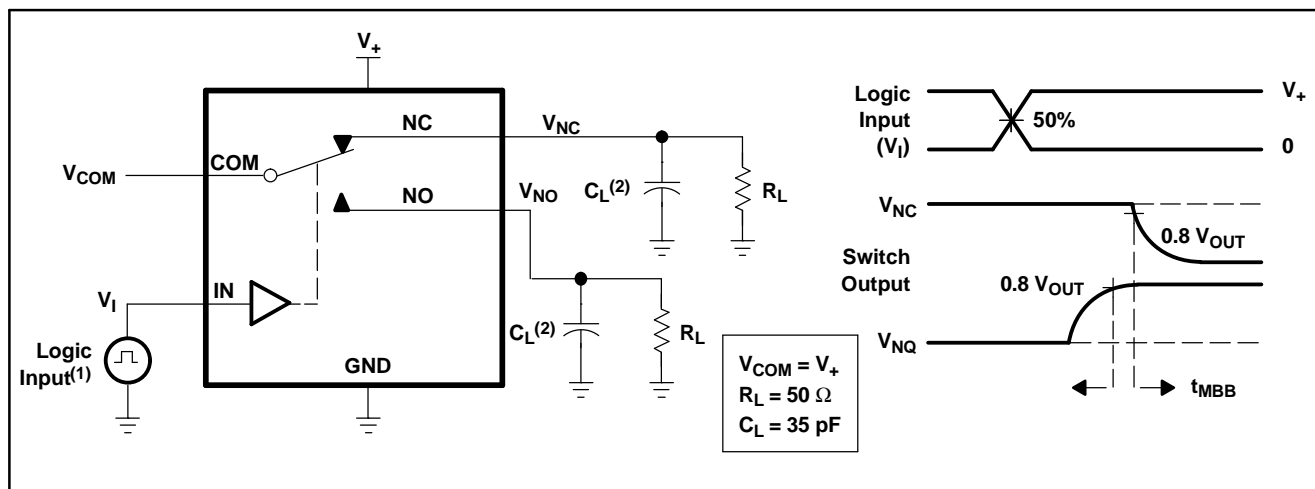
Figure 17. Capacitance ( $C_I$ ,  $C_{COM(ON)}$ ,  $C_{NC(OFF)}$ ,  $C_{NO(OFF)}$ ,  $C_{NC(ON)}$ ,  $C_{NO(ON)}$ )



- A. All input pulses are supplied by generators having the following characteristics:  $PRR \leq 10 \text{ MHz}$ ,  $Z_O = 50 \Omega$ ,  $t_r < 5 \text{ ns}$ ,  $t_f < 5 \text{ ns}$ .
- B.  $C_L$  includes probe and jig capacitance.

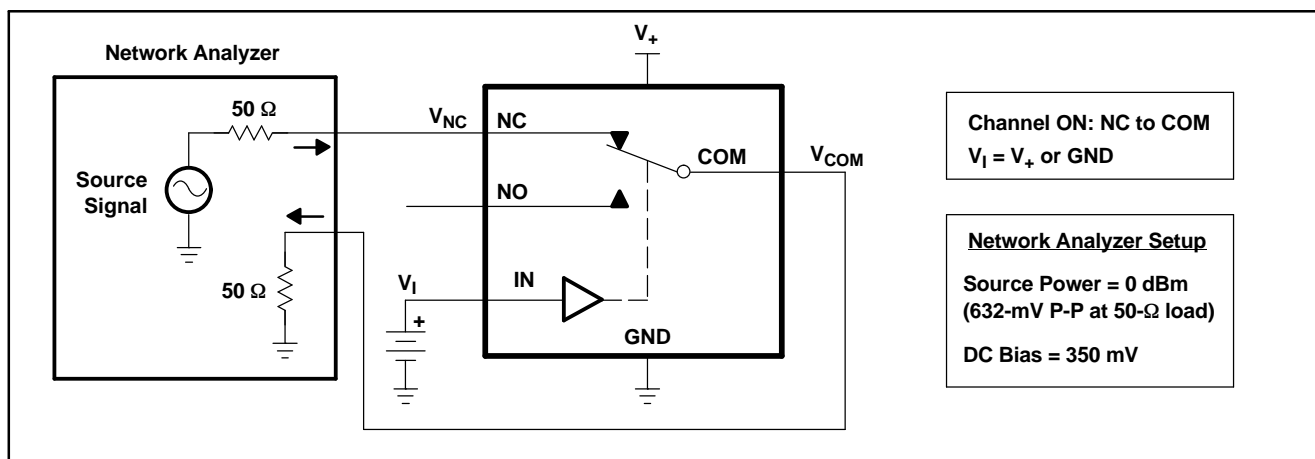
Figure 18. Turn-On ( $t_{ON}$ ) and Turn-Off Time ( $t_{OFF}$ )

**PARAMETER MEASUREMENT INFORMATION (continued)**



- All input pulses are supplied by generators having the following characteristics:  $\text{PRR} \leq 10 \text{ MHz}$ ,  $Z_O = 50 \Omega$ ,  $t_r < 5 \text{ ns}$ ,  $t_f < 5 \text{ ns}$ .
- $C_L$  includes probe and jig capacitance.

**Figure 19. Make-Before-Break Time ( $t_{MBB}$ )**



**Figure 20. Bandwidth (BW)**

PARAMETER MEASUREMENT INFORMATION (continued)

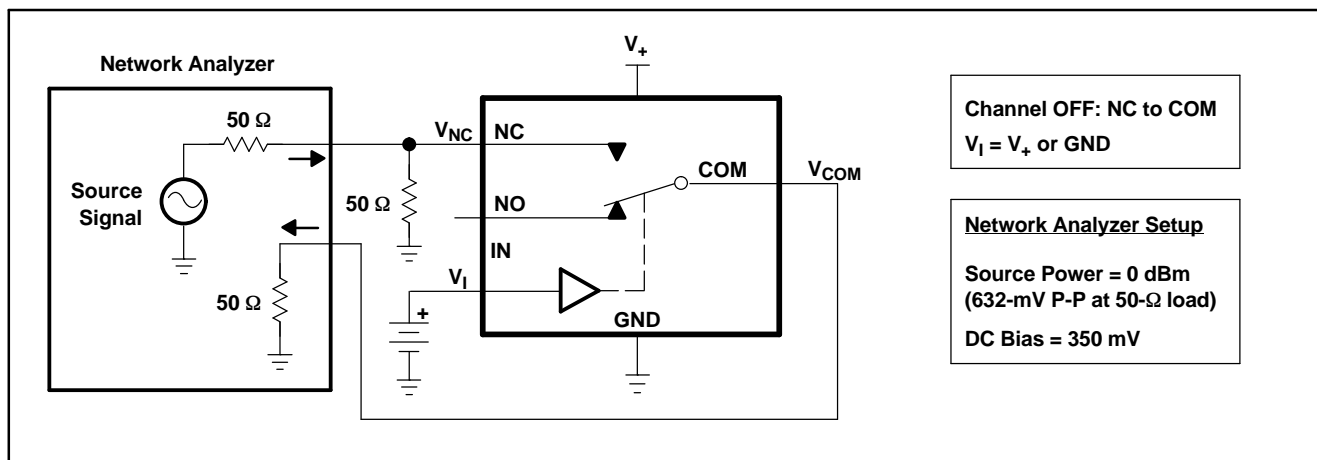
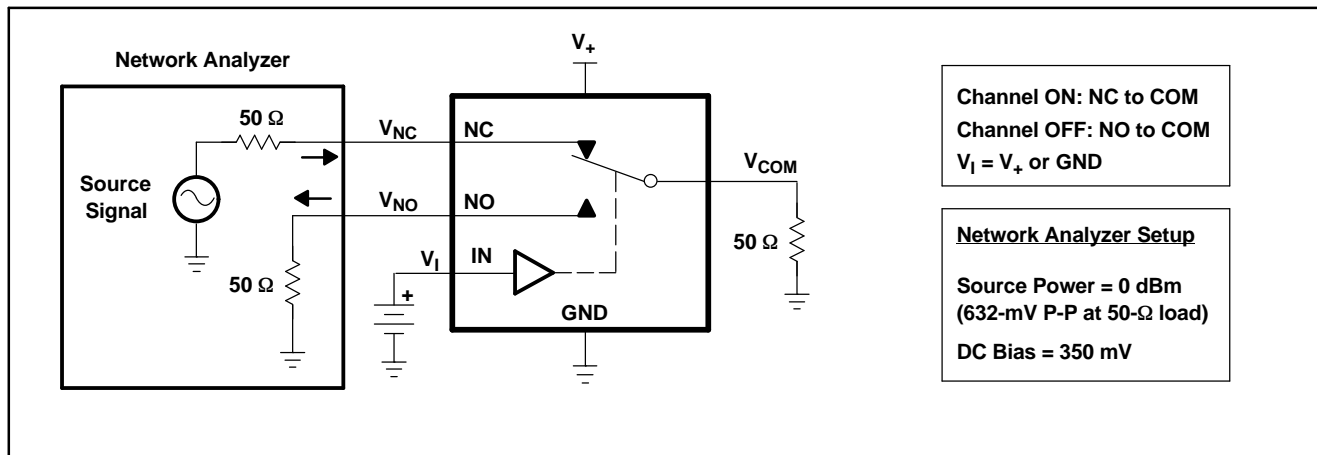


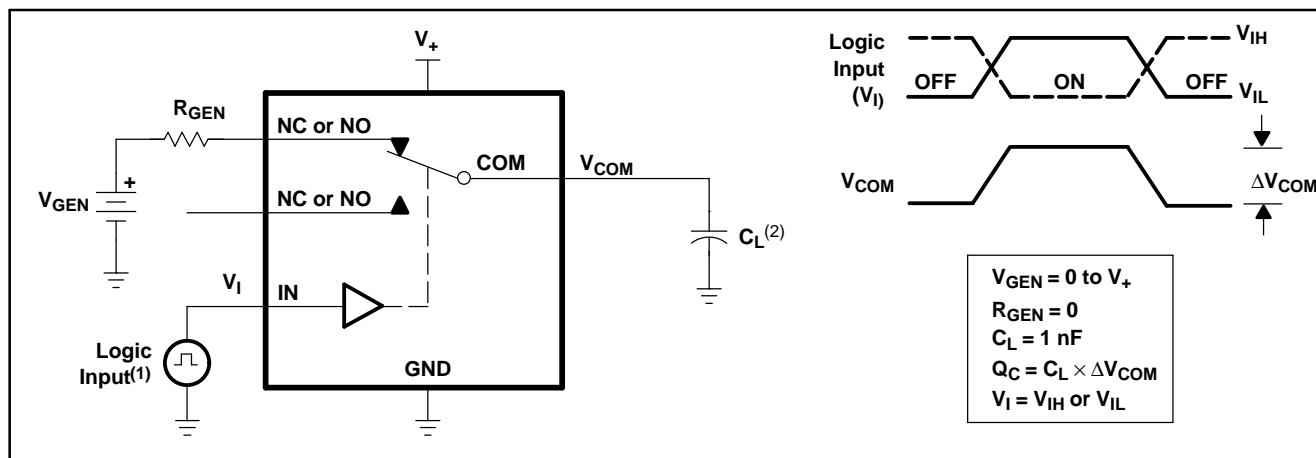
Figure 21. OFF Isolation ( $O_{ISO}$ )



- All input pulses are supplied by generators having the following characteristics:  $PRR \leq 10$  MHz,  $Z_O = 50$   $\Omega$ ,  $t_r < 5$  ns,  $t_f < 5$  ns.
- $C_L$  includes probe and jig capacitance.

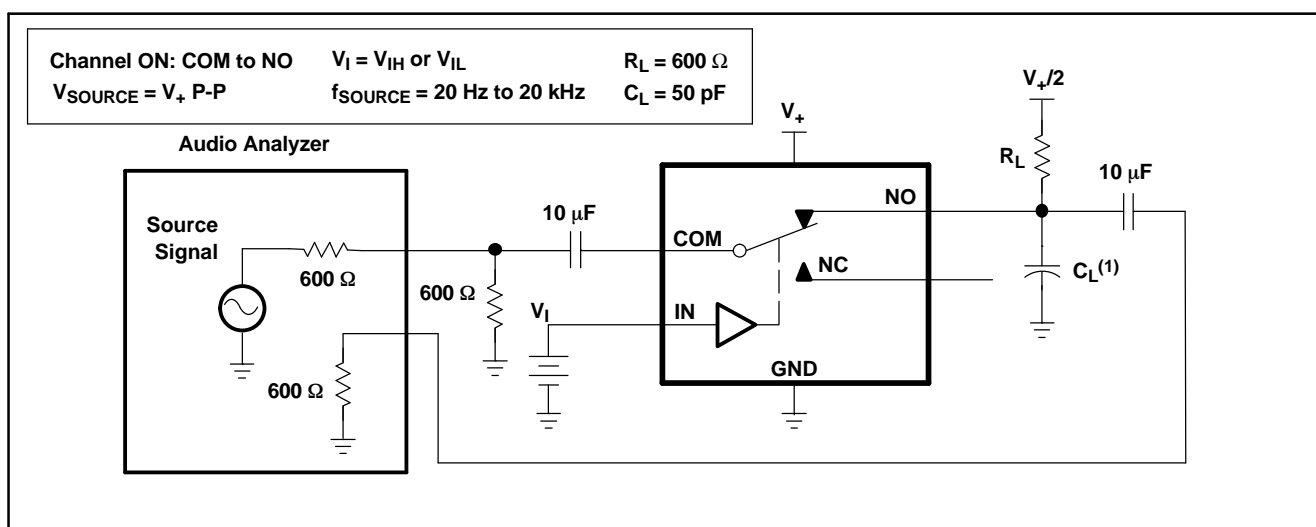
Figure 22. Crosstalk ( $X_{TALK}$ )

**PARAMETER MEASUREMENT INFORMATION (continued)**



A.  $C_L$  includes probe and jig capacitance.

**Figure 23. Charge Injection (QC)**



**Figure 24. Total Harmonic Distortion (THD)**

## PACKAGING INFORMATION

Orderable part number	Status (1)	Material type (2)	Package   Pins	Package qty   Carrier	RoHS (3)	Lead finish/ Ball material (4)	MSL rating/ Peak reflow (5)	Op temp (°C)	Part marking (6)
<a href="#">TS5A23160DGSR</a>	Active	Production	VSSOP (DGS)   10	2500   LARGE T&R	Yes	NIPDAU	Level-1-260C-UNLIM	-40 to 85	JLR
TS5A23160DGSR.B	Active	Production	VSSOP (DGS)   10	2500   LARGE T&R	Yes	NIPDAU	Level-1-260C-UNLIM	-40 to 85	JLR
TS5A23160DGSRG4	Active	Production	VSSOP (DGS)   10	2500   LARGE T&R	Yes	NIPDAU	Level-1-260C-UNLIM	-40 to 85	JLR
TS5A23160DGSRG4.B	Active	Production	VSSOP (DGS)   10	2500   LARGE T&R	Yes	NIPDAU	Level-1-260C-UNLIM	-40 to 85	JLR
<a href="#">TS5A23160DGST</a>	Obsolete	Production	VSSOP (DGS)   10	-	-	Call TI	Call TI	-40 to 85	JLR

<sup>(1)</sup> **Status:** For more details on status, see our [product life cycle](#).

<sup>(2)</sup> **Material type:** When designated, preproduction parts are prototypes/experimental devices, and are not yet approved or released for full production. Testing and final process, including without limitation quality assurance, reliability performance testing, and/or process qualification, may not yet be complete, and this item is subject to further changes or possible discontinuation. If available for ordering, purchases will be subject to an additional waiver at checkout, and are intended for early internal evaluation purposes only. These items are sold without warranties of any kind.

<sup>(3)</sup> **RoHS values:** Yes, No, RoHS Exempt. See the [TI RoHS Statement](#) for additional information and value definition.

<sup>(4)</sup> **Lead finish/Ball material:** Parts may have multiple material finish options. Finish options are separated by a vertical ruled line. Lead finish/Ball material values may wrap to two lines if the finish value exceeds the maximum column width.

<sup>(5)</sup> **MSL rating/Peak reflow:** The moisture sensitivity level ratings and peak solder (reflow) temperatures. In the event that a part has multiple moisture sensitivity ratings, only the lowest level per JEDEC standards is shown. Refer to the shipping label for the actual reflow temperature that will be used to mount the part to the printed circuit board.

<sup>(6)</sup> **Part marking:** There may be an additional marking, which relates to the logo, the lot trace code information, or the environmental category of the part.

Multiple part markings will be inside parentheses. Only one part marking contained in parentheses and separated by a "~" will appear on a part. If a line is indented then it is a continuation of the previous line and the two combined represent the entire part marking for that device.

**Important Information and Disclaimer:**The information provided on this page represents TI's knowledge and belief as of the date that it is provided. TI bases its knowledge and belief on information provided by third parties, and makes no representation or warranty as to the accuracy of such information. Efforts are underway to better integrate information from third parties. TI has taken and continues to take reasonable steps to provide representative and accurate information but may not have conducted destructive testing or chemical analysis on incoming materials and chemicals. TI and TI suppliers consider certain information to be proprietary, and thus CAS numbers and other limited information may not be available for release.

In no event shall TI's liability arising out of such information exceed the total purchase price of the TI part(s) at issue in this document sold by TI to Customer on an annual basis.

## TAPE AND REEL INFORMATION



\*All dimensions are nominal

Device	Package Type	Package Drawing	Pins	SPQ	Reel Diameter (mm)	Reel Width W1 (mm)	A0 (mm)	B0 (mm)	K0 (mm)	P1 (mm)	W (mm)	Pin1 Quadrant
TS5A23160DGSR	VSSOP	DGS	10	2500	330.0	12.4	5.3	3.4	1.4	8.0	12.0	Q1
TS5A23160DGSRG4	VSSOP	DGS	10	2500	330.0	12.4	5.3	3.4	1.4	8.0	12.0	Q1

## TAPE AND REEL BOX DIMENSIONS



\*All dimensions are nominal

Device	Package Type	Package Drawing	Pins	SPQ	Length (mm)	Width (mm)	Height (mm)
TS5A23160DGSR	VSSOP	DGS	10	2500	358.0	335.0	35.0
TS5A23160DGSRG4	VSSOP	DGS	10	2500	358.0	335.0	35.0





# EXAMPLE BOARD LAYOUT

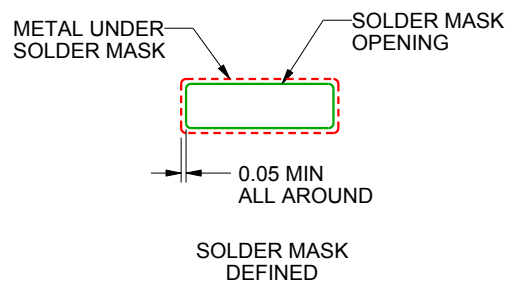
DGS0010A

VSSOP - 1.1 mm max height

SMALL OUTLINE PACKAGE



LAND PATTERN EXAMPLE  
SCALE:10X



SOLDER MASK DETAILS  
NOT TO SCALE

4221984/A 05/2015

NOTES: (continued)

6. Publication IPC-7351 may have alternate designs.

7. Solder mask tolerances between and around signal pads can vary based on board fabrication site.

## EXAMPLE STENCIL DESIGN

DGS0010A

VSSOP - 1.1 mm max height

SMALL OUTLINE PACKAGE



SOLDER PASTE EXAMPLE  
BASED ON 0.125 mm THICK STENCIL  
SCALE:10X

4221984/A 05/2015

NOTES: (continued)

8. Laser cutting apertures with trapezoidal walls and rounded corners may offer better paste release. IPC-7525 may have alternate design recommendations.
9. Board assembly site may have different recommendations for stencil design.

## IMPORTANT NOTICE AND DISCLAIMER

TI PROVIDES TECHNICAL AND RELIABILITY DATA (INCLUDING DATA SHEETS), DESIGN RESOURCES (INCLUDING REFERENCE DESIGNS), APPLICATION OR OTHER DESIGN ADVICE, WEB TOOLS, SAFETY INFORMATION, AND OTHER RESOURCES "AS IS" AND WITH ALL FAULTS, AND DISCLAIMS ALL WARRANTIES, EXPRESS AND IMPLIED, INCLUDING WITHOUT LIMITATION ANY IMPLIED WARRANTIES OF MERCHANTABILITY, FITNESS FOR A PARTICULAR PURPOSE OR NON-INFRINGEMENT OF THIRD PARTY INTELLECTUAL PROPERTY RIGHTS.

These resources are intended for skilled developers designing with TI products. You are solely responsible for (1) selecting the appropriate TI products for your application, (2) designing, validating and testing your application, and (3) ensuring your application meets applicable standards, and any other safety, security, regulatory or other requirements.

These resources are subject to change without notice. TI grants you permission to use these resources only for development of an application that uses the TI products described in the resource. Other reproduction and display of these resources is prohibited. No license is granted to any other TI intellectual property right or to any third party intellectual property right. TI disclaims responsibility for, and you will fully indemnify TI and its representatives against, any claims, damages, costs, losses, and liabilities arising out of your use of these resources.

TI's products are provided subject to [TI's Terms of Sale](#) or other applicable terms available either on [ti.com](https://www.ti.com) or provided in conjunction with such TI products. TI's provision of these resources does not expand or otherwise alter TI's applicable warranties or warranty disclaimers for TI products.

TI objects to and rejects any additional or different terms you may have proposed.

Mailing Address: Texas Instruments, Post Office Box 655303, Dallas, Texas 75265  
Copyright © 2025, Texas Instruments Incorporated