

SN74AHC273-Q1 Automotive Octal D-Type Flip-Flops with Clear

1 Features

- AEC-Q100 qualified for automotive applications:
 - Device temperature grade 1: -40°C to +125°C
 - Device HBM ESD classification level 2
 - Device CDM ESD classification level C4B
- Available in wettable flank QFN package
- Operating range 2V to 5.5V V_{CC}
- Low delay, 18.8ns at 5V, 15pF load
- Supports 130MHz at 5V, 15pF load
- Latch-up performance exceeds 250mA per JESD 17

2 Applications

- Synchronize data to clock
- Simple memory – 8 bits

3 Description

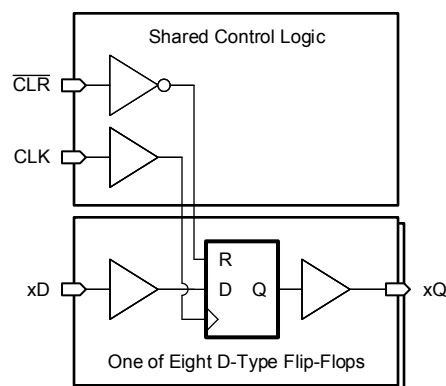
The SN74AHC273-Q1 contains eight positive-edge-triggered D-type flip-flops with a direct active low clear (\overline{CLR}) input.

Information at the data (D) inputs meeting the setup time requirements is transferred to the Q outputs on the positive-going edge of the clock (CLK) pulse. Clock triggering occurs at a particular voltage level and is not related directly to the transition time of the positive-going pulse. When CLK is at either the high or low level, the D input has no effect at the output.

Device Information

| PART NUMBER | PACKAGE ⁽¹⁾ | PACKAGE SIZE ⁽²⁾ | BODY SIZE ⁽³⁾ |
|---------------|------------------------|-----------------------------|--------------------------|
| SN74AHC273-Q1 | PW (TSSOP, 20) | 6.5mm × 6.4mm | 6.5mm × 4.4mm |
| | DGS (VSSOP, 20) | 5.1mm × 4.9mm | 5.1mm × 3.0mm |
| | RKS (VQFN, 20) | 4.5mm × 2.5mm | 4.5mm × 2.5mm |

- (1) For more information, see [Mechanical, Packaging, and Orderable Information](#).
- (2) The package size (length × width) is a nominal value and includes pins, where applicable.
- (3) The body size (length × width) is a nominal value and does not include pins.



Functional Block Diagram



Table of Contents

| | | | |
|--|-----------|--|-----------|
| 1 Features | 1 | 7.4 Device Functional Modes..... | 14 |
| 2 Applications | 1 | 8 Application and Implementation | 15 |
| 3 Description | 1 | 8.1 Application Information..... | 15 |
| 4 Pin Configuration and Functions | 3 | 8.2 Typical Application..... | 15 |
| 5 Specifications | 4 | 8.3 Design Requirements..... | 16 |
| 5.1 Absolute Maximum Ratings..... | 4 | 8.4 Detailed Design Procedure..... | 18 |
| 5.2 ESD Ratings..... | 4 | 8.5 Application Curve..... | 18 |
| 5.3 Recommended Operating Conditions..... | 5 | 8.6 Power Supply Recommendations..... | 18 |
| 5.4 Thermal Information..... | 5 | 8.7 Layout..... | 18 |
| 5.5 Electrical Characteristics..... | 5 | 9 Device and Documentation Support | 20 |
| 5.6 Noise Characteristics..... | 6 | 9.1 Documentation Support..... | 20 |
| 5.7 Timing Characteristics..... | 6 | 9.2 Receiving Notification of Documentation Updates..... | 20 |
| 5.8 Switching Characteristics..... | 7 | 9.3 Support Resources..... | 20 |
| 5.9 Typical Characteristics..... | 8 | 9.4 Trademarks..... | 20 |
| 6 Parameter Measurement Information | 10 | 9.5 Electrostatic Discharge Caution..... | 20 |
| 7 Detailed Description | 11 | 9.6 Glossary..... | 20 |
| 7.1 Overview..... | 11 | 10 Revision History | 20 |
| 7.2 Functional Block Diagram..... | 11 | 11 Mechanical, Packaging, and Orderable Information | 21 |
| 7.3 Feature Description..... | 12 | | |

4 Pin Configuration and Functions

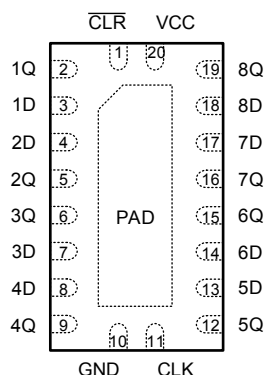


Figure 4-1. SN74AHC273-Q1 RKS Package (Top View)

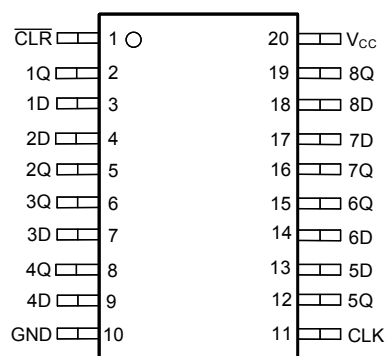


Figure 4-2. SN74AHC273-Q1 PW, DGS Package (Top View)

Pin Functions

| PIN | | TYPE ⁽¹⁾ | DESCRIPTION |
|----------------------------|-----|---------------------|---|
| NAME | NO. | | |
| CLR | 1 | I | Clear for all channels, active low |
| 1Q | 2 | O | Output for channel 1 |
| 1D | 3 | I | Input for channel 1 |
| 2D | 4 | I | Input for channel 2 |
| 2Q | 5 | O | Output for channel 2 |
| 3Q | 6 | O | Output for channel 3 |
| 3D | 7 | I | Input for channel 3 |
| 4D | 8 | I | Input for channel 4 |
| 4Q | 9 | O | Output for channel 4 |
| GND | 10 | G | Ground |
| CLK | 11 | I | Clock for all channels, rising edge triggered |
| 5Q | 12 | O | Output for channel 5 |
| 5D | 13 | I | Input for channel 5 |
| 6D | 14 | I | Input for channel 6 |
| 6Q | 15 | O | Output for channel 6 |
| 7Q | 16 | O | Output for channel 7 |
| 7D | 17 | I | Input for channel 7 |
| 8D | 18 | I | Input for channel 8 |
| 8Q | 19 | O | Output for channel 8 |
| V _{CC} | 20 | P | Postive supply |
| Thermal Pad ⁽²⁾ | | — | The thermal pad can be connected to GND or left floating. Do not connect to any other signal or supply. |

(1) Signal Types: I = Input, O = Output, G = Ground, P = Power.

(2) WRKS package only.

5 Specifications

5.1 Absolute Maximum Ratings

over operating free-air temperature range (unless otherwise noted)⁽¹⁾

| | | | MIN | MAX | UNIT |
|------------------|---|---|------|-----------------------|------|
| V _{CC} | Supply voltage range | | –0.5 | 7 | V |
| V _I | Input voltage range ⁽²⁾ | | –0.5 | 7 | V |
| V _O | Voltage range applied to any output in the high-impedance or power-off state ⁽²⁾ | | –0.5 | 7 | V |
| V _O | Output voltage range ⁽²⁾ | | –0.5 | V _{CC} + 0.5 | V |
| I _{IK} | Input clamp current | V _I < –0.5V | | –20 | mA |
| I _{OK} | Output clamp current | V _O < –0.5V or V _O > V _{CC} + 0.5V | | ±20 | mA |
| I _O | Continuous output current | V _O = 0 to V _{CC} | | ±25 | mA |
| | Continuous output current through V _{CC} or GND | | | ±75 | mA |
| T _{stg} | Storage temperature | | –65 | 150 | °C |

- (1) Operation outside the *Absolute Maximum Ratings* may cause permanent device damage. Absolute maximum ratings do not imply functional operation of the device at these or any other conditions beyond those listed under *Recommended Operating Conditions*. If briefly operating outside the *Recommended Operating Conditions* but within the *Absolute Maximum Ratings*, the device may not sustain damage, but it may not be fully functional. Operating the device in this manner may affect device reliability, functionality, performance, and shorten the device lifetime.
- (2) The input and output voltage ratings may be exceeded if the input and output current ratings are observed.

5.2 ESD Ratings

| | | | VALUE | UNIT |
|--------------------|-------------------------|--|-------|------|
| V _(ESD) | Electrostatic discharge | Human body model (HBM), per AEC Q100-002 HBM ESD Classification Level 2 ⁽¹⁾ | ±2000 | V |
| | | Charged device model (CDM), per AEC Q100-011 CDM ESD Classification Level C4B | ±1000 | |

- (1) AEC Q100-002 indicate that HBM stressing shall be in accordance with the ANSI/ESDA/JEDEC JS-001 specification.

5.3 Recommended Operating Conditions

over operating free-air temperature range (unless otherwise noted)

| Spec | Description | Condition | MIN | MAX | UNIT |
|-----------------|------------------------------------|-------------------------------|------|-----------------|------|
| V _{CC} | Supply voltage | | 2 | 5.5 | V |
| V _{IH} | High-level input voltage | V _{CC} = 2V | 1.5 | | V |
| | | V _{CC} = 3V | 2.1 | | |
| | | V _{CC} = 5.5V | 3.85 | | |
| V _{IL} | Low-Level input voltage | V _{CC} = 2V | | 0.5 | V |
| | | V _{CC} = 3V | | 0.9 | |
| | | V _{CC} = 5.5V | | 1.65 | |
| V _I | Input Voltage | | 0 | 5.5 | V |
| V _O | Ouput Voltage | | 0 | V _{CC} | V |
| I _{OH} | High-level output current | V _{CC} = 2V | | -50 | μA |
| | | V _{CC} = 3.3V ± 0.3V | | -4 | mA |
| | | V _{CC} = 5V ± 0.5V | | -8 | mA |
| I _{OL} | Low-level output current | V _{CC} = 2V | | 50 | μA |
| | | V _{CC} = 3.3V ± 0.3V | | 4 | mA |
| | | V _{CC} = 5V ± 0.5V | | 8 | mA |
| Δt/Δv | Input transition rise or fall rate | V _{CC} = 3.3V ± 0.3V | | 100 | ns/V |
| | | V _{CC} = 5V ± 0.5V | | 20 | ns/V |
| T _A | Operating free-air temperature | | -40 | 125 | °C |

5.4 Thermal Information

| PACKAGE | PINS | THERMAL METRIC ⁽¹⁾ | | | | | | UNIT |
|-------------|------|-------------------------------|-----------------------|------------------|-----------------|-----------------|-----------------------|------|
| | | R _{θJA} | R _{θJC(top)} | R _{θJB} | Ψ _{JT} | Ψ _{JB} | R _{θJC(bot)} | |
| DGS (VSSOP) | 20 | 131.6 | 69.5 | 86.7 | 10.9 | 85.9 | N/A | °C/W |
| PW (TSSOP) | 20 | 116.8 | 58.5 | 78.7 | 12.6 | 77.9 | N/A | °C/W |
| RKS (VQFN) | 20 | 90.4 | 92.2 | 63.4 | 29 | 63.5 | 41.3 | °C/W |

(1) For more information about traditional and new thermal metrics, see the [Semiconductor and IC Package Thermal Metrics](#) application note.

5.5 Electrical Characteristics

over operating free-air temperature range (unless otherwise noted); typical values at T_A = 25°C

| PARAMETER | TEST CONDITIONS | V _{CC} | -40°C to 125°C | | | UNIT |
|-----------------|---|-----------------|----------------------|------------------------|------|------|
| | | | MIN | TYP | MAX | |
| V _{OH} | I _{OH} = -50μA | 2V to 5.5V | V _{CC} -0.1 | V _{CC} - 0.01 | | V |
| | I _{OH} = -4mA | 3V | 2.48 | 2.9 | | |
| | I _{OH} = -8mA | 4.5V | 3.8 | 4.3 | | |
| V _{OL} | I _{OL} = 50μA | 2V to 5.5V | | 0.01 | 0.1 | V |
| | I _{OL} = 4mA | 3V | | 0.1 | 0.44 | |
| | I _{OL} = 8mA | 4.5V | | 0.2 | 0.44 | |
| I _I | V _I = 5.5V or GND and V _{CC} = 0V to 5.5V | 0V to 5.5V | | ±0.001 | ±1 | μA |
| I _{CC} | V _I = V _{CC} or GND, I _O = 0, and V _{CC} = 5.5V | 5.5V | | 0.3 | 40 | μA |
| C _I | V _I = V _{CC} or GND | 5V | | 2 | 10 | pF |
| C _{PD} | No load, F = 1MHz | 5V | | 41 | | pF |

5.6 Noise Characteristics

VCC = 5 V, CL = 50 pF, TA = 25°C

| PARAMETER | DESCRIPTION | MIN | TYP | MAX | UNIT |
|--------------------|---|-----|------|-----|------|
| V _{OL(P)} | Quiet output, maximum dynamic V _{OL} | | 0.8 | | V |
| V _{OL(V)} | Quiet output, minimum dynamic V _{OL} | | -0.2 | | V |
| V _{OH(V)} | Quiet output, minimum dynamic V _{OH} | | 3.8 | | V |
| V _{IH(D)} | High-level dynamic input voltage | 3.5 | | | V |
| V _{IL(D)} | Low-level dynamic input voltage | | | 1.5 | V |

5.7 Timing Characteristics

over recommended operating free-air temperature range (unless otherwise noted)

| PARAMETER | DESCRIPTION | CONDITION | V _{CC} | -40°C to 125°C | | UNIT |
|-----------------|----------------|----------------------|-----------------|----------------|-----|------|
| | | | | MIN | MAX | |
| t _W | Pulse duration | CLR low | 2V | 2.9 | | ns |
| t _W | Pulse duration | CLK | 2V | 4.4 | | ns |
| t _{SU} | Setup time | Data before CLK edge | 2V | 6.2 | | ns |
| t _{SU} | Setup time | CLR before CLK edge | 2V | 2.2 | | ns |
| t _H | Hold time | Data after CLK edge | 2V | 0 | | ns |
| t _W | Pulse duration | CLR low | 3.3V | 3.9 | | ns |
| t _W | Pulse duration | CLK | 3.3V | 3.9 | | ns |
| t _{SU} | Setup time | Data before CLK edge | 3.3V | 3 | | ns |
| t _{SU} | Setup time | CLR before CLK edge | 3.3V | 1 | | ns |
| t _H | Hold time | Data after CLK edge | 3.3V | 0 | | ns |
| t _W | Pulse duration | CLR low | 5V | 3.9 | | ns |
| t _W | Pulse duration | CLK | 5V | 3.9 | | ns |
| t _{SU} | Setup time | Data before CLK edge | 5V | 1.8 | | ns |
| t _{SU} | Setup time | CLR before CLK edge | 5V | 0.6 | | ns |
| t _H | Hold time | Data after CLK edge | 5V | 0 | | ns |

5.8 Switching Characteristics

$C_L = 50\text{pF}$; over operating free-air temperature range; typical values measured at $T_A = 25^\circ\text{C}$ (unless otherwise noted). See *Parameter Measurement Information*

| PARAMETER | FROM (INPUT) | TO (OUTPUT) | LOAD CAPACITANCE | V_{CC} | -40°C to 125°C | | | UNIT |
|-------------|-------------------------|----------------|---------------------|----------|----------------|------|------|------|
| | | | | | MIN | TYP | MAX | |
| f_{\max} | | | $C_L = 15\text{pF}$ | 2V | 65 | 125 | | MHz |
| | | | | 3.3V | 80 | 245 | | MHz |
| | | | | 5V | 130 | 300 | | MHz |
| | | | $C_L = 50\text{pF}$ | 2V | 50 | 120 | | MHz |
| | | | | 3.3V | 50 | 170 | | MHz |
| | | | | 5V | 90 | 200 | | MHz |
| t_{PLH} | CLK | Q | $C_L = 15\text{pF}$ | 2V | 7.5 | 12 | 17.8 | ns |
| t_{PHL} | CLK | Q | $C_L = 15\text{pF}$ | 2V | 7.3 | 12.4 | 18.8 | ns |
| t_{PHL} | $\overline{\text{CLR}}$ | Q | $C_L = 15\text{pF}$ | 2V | 7.5 | 12.1 | 17.9 | ns |
| t_{PLH} | CLK | Q | $C_L = 15\text{pF}$ | 3.3V | 5.4 | 7.7 | 10.9 | ns |
| t_{PHL} | CLK | Q | $C_L = 15\text{pF}$ | 3.3V | 4.8 | 7.4 | 10.9 | ns |
| t_{PHL} | $\overline{\text{CLR}}$ | Q | $C_L = 15\text{pF}$ | 3.3V | 5 | 7.5 | 10.8 | ns |
| t_{PLH} | CLK | Q | $C_L = 15\text{pF}$ | 5V | 4.4 | 6 | 8 | ns |
| t_{PHL} | CLK | Q | $C_L = 15\text{pF}$ | 5V | 3.7 | 5.3 | 7.6 | ns |
| t_{PHL} | $\overline{\text{CLR}}$ | Q | $C_L = 15\text{pF}$ | 5V | 4 | 5.4 | 7.5 | ns |
| t_{PLH} | CLK | Q | $C_L = 50\text{pF}$ | 2V | 9.3 | 14.8 | 21.7 | ns |
| t_{PHL} | CLK | Q | $C_L = 50\text{pF}$ | 2V | 8.9 | 14.8 | 22.2 | ns |
| t_{PHL} | $\overline{\text{CLR}}$ | Q | $C_L = 50\text{pF}$ | 2V | 9.5 | 14.8 | 21.5 | ns |
| t_{PLH} | CLK | Q | $C_L = 50\text{pF}$ | 3.3V | 6.6 | 9.6 | 13.6 | ns |
| t_{PHL} | CLK | Q | $C_L = 50\text{pF}$ | 3.3V | 6 | 9.1 | 13.3 | ns |
| t_{PHL} | $\overline{\text{CLR}}$ | Q | $C_L = 50\text{pF}$ | 3.3V | 6.7 | 9.5 | 13.3 | ns |
| t_{PLH} | CLK | Q | $C_L = 50\text{pF}$ | 5V | 5.4 | 7.4 | 10 | ns |
| t_{PHL} | CLK | Q | $C_L = 50\text{pF}$ | 5V | 4.7 | 6.7 | 9.4 | ns |
| t_{PHL} | $\overline{\text{CLR}}$ | Q | $C_L = 50\text{pF}$ | 5V | 5.3 | 7.1 | 9.5 | ns |
| $t_{sk(o)}$ | | | $C_L = 50\text{pF}$ | 2V | | 0.2 | 0.3 | ns |
| $t_{sk(o)}$ | | | $C_L = 50\text{pF}$ | 3.3V | | 0.2 | 0.4 | ns |
| $t_{sk(o)}$ | | | $C_L = 50\text{pF}$ | 5V | | 0.2 | 0.3 | ns |

5.9 Typical Characteristics

$T_A = 25^\circ\text{C}$ (unless otherwise noted)

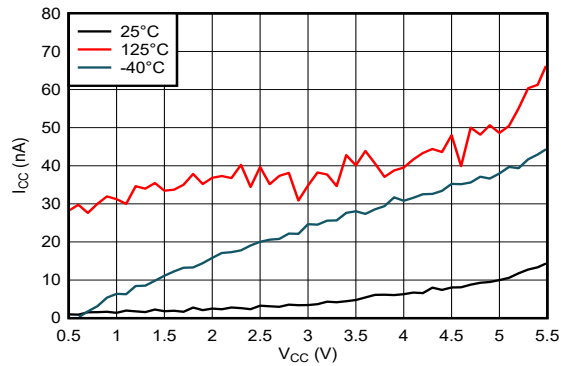


Figure 5-1. Supply Current Across Supply Voltage

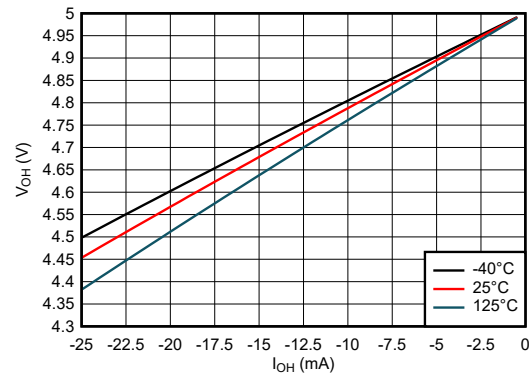


Figure 5-2. Output Voltage vs Current in HIGH State; 5V Supply

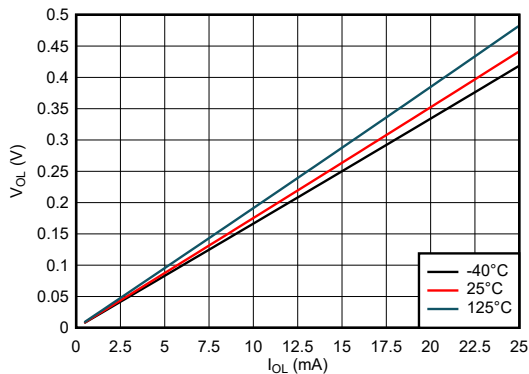


Figure 5-3. Output Voltage vs Current in LOW State; 5V Supply

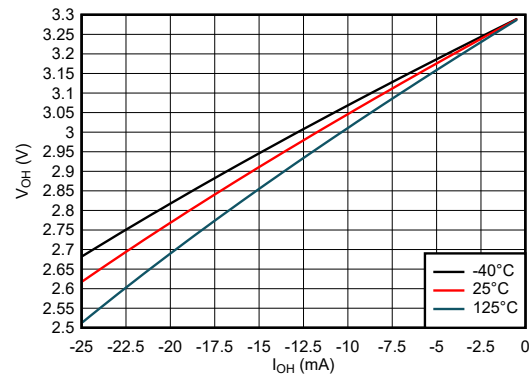


Figure 5-4. Output Voltage vs Current in HIGH State; 3.3V Supply

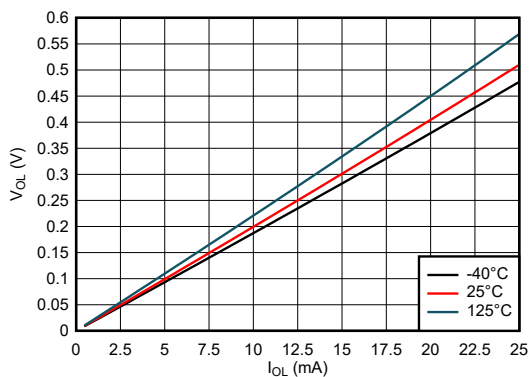


Figure 5-5. Output Voltage vs Current in LOW State; 3.3V Supply

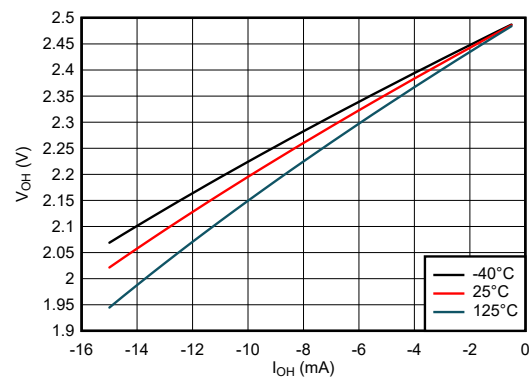


Figure 5-6. Output Voltage vs Current in HIGH State; 2.5V Supply

5.9 Typical Characteristics (continued)

$T_A = 25^\circ\text{C}$ (unless otherwise noted)

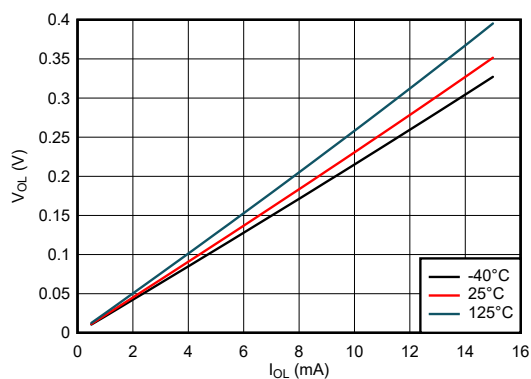


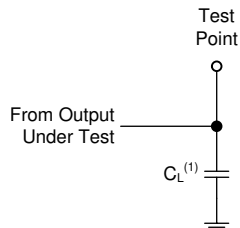
Figure 5-7. Output Voltage vs Current in LOW State; 2.5V Supply

6 Parameter Measurement Information

Phase relationships between waveforms were chosen arbitrarily. All input pulses are supplied by generators having the following characteristics: $PRR \leq 1\text{MHz}$, $Z_O = 50\Omega$, $t_t < 2.5\text{ns}$.

For clock inputs, f_{max} is measured when the input duty cycle is 50%.

The outputs are measured one at a time with one input transition per measurement.



(1) C_L includes probe and test-fixture capacitance.

Figure 6-1. Load Circuit for Push-Pull Outputs

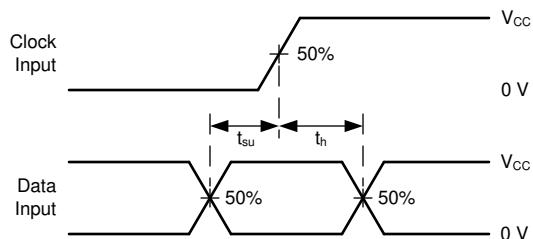


Figure 6-3. Voltage Waveforms, Setup and Hold Times

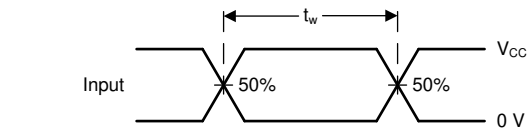
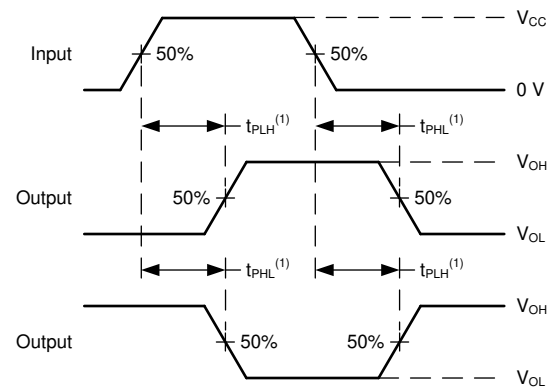
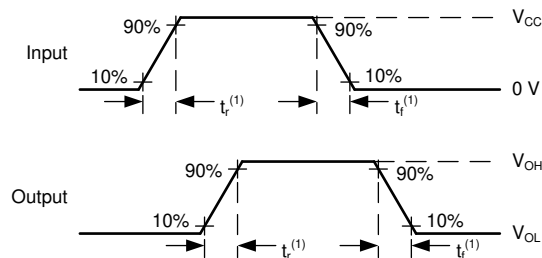


Figure 6-2. Voltage Waveforms, Pulse Duration



(1) The greater between t_{PLH} and t_{PHL} is the same as t_{pd} .

Figure 6-4. Voltage Waveforms Propagation Delays



(1) The greater between t_r and t_f is the same as t_t .

Figure 6-5. Voltage Waveforms, Input and Output Transition Times

7 Detailed Description

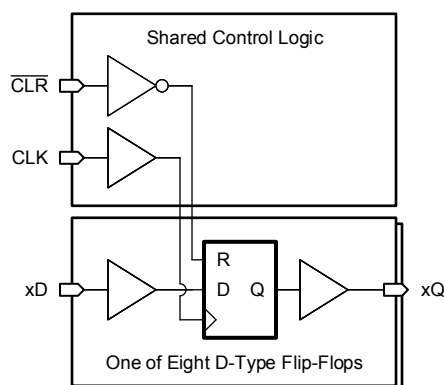
7.1 Overview

The SN74AHC273-Q1 contains 8 positive-edge-triggered D-type flip-flops with shared direct active low clear ($\overline{\text{CLR}}$) input.

Information at the data (D) inputs meeting the setup time requirements is transferred to the (Q) outputs on the positive-going edge of the clock (CLK) pulse. Clock triggering occurs at a particular voltage level and is not related directly to the transition time of the positive-going pulse. When CLK is at either the high or low level or transitioning from a high level to a low level, the D input has no effect at the output.

Information at the data (Q) outputs can be asynchronously cleared with a low level input through the clear ($\overline{\text{CLR}}$) pin.

7.2 Functional Block Diagram



7.3 Feature Description

7.3.1 Balanced CMOS Push-Pull Outputs

This device includes balanced CMOS push-pull outputs. The term *balanced* indicates that the device can sink and source similar currents. The drive capability of this device may create fast edges into light loads, so routing and load conditions should be considered to prevent ringing. Additionally, the outputs of this device are capable of driving larger currents than the device can sustain without being damaged. It is important to limit the output power of the device to avoid damage due to overcurrent. The electrical and thermal limits defined in the [Absolute Maximum Ratings](#) must be followed at all times.

Unused push-pull CMOS outputs must be left disconnected.

7.3.2 Standard CMOS Inputs

This device includes standard CMOS inputs. Standard CMOS inputs are high impedance and are typically modeled as a resistor in parallel with the input capacitance given in the [Electrical Characteristics](#). The worst case resistance is calculated with the maximum input voltage, given in the [Absolute Maximum Ratings](#), and the maximum input leakage current, given in the [Electrical Characteristics](#), using Ohm's law ($R = V \div I$).

Standard CMOS inputs require that input signals transition between valid logic states quickly, as defined by the input transition time or rate in the [Recommended Operating Conditions](#) table. Failing to meet this specification will result in excessive power consumption and could cause oscillations. More details can be found in [Implications of Slow or Floating CMOS Inputs](#).

Do not leave standard CMOS inputs floating at any time during operation. Unused inputs must be terminated at V_{CC} or GND. If a system will not be actively driving an input at all times, then a pull-up or pull-down resistor can be added to provide a valid input voltage during these times. The resistor value will depend on multiple factors; a 10k Ω resistor, however, is recommended and will typically meet all requirements.

7.3.3 Wettable Flanks

This device includes wettable flanks for at least one package. See the *Features* section on the front page of the data sheet where packages include this feature.

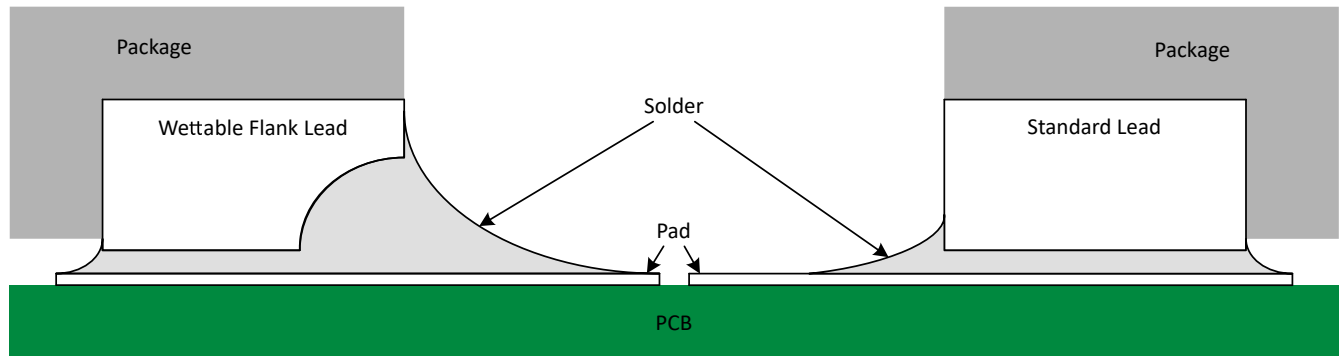


Figure 7-1. Simplified Cutaway View of Wettable-Flank QFN Package and Standard QFN Package After Soldering

Wettable flanks help improve side wetting after soldering, which makes QFN packages easier to inspect with automatic optical inspection (AOI). As shown in [Figure 7-1](#), a wettable flank can be dimpled or step-cut to provide additional surface area for solder adhesion which assists in reliably creating a side fillet. See the mechanical drawing for additional details.

7.3.4 Clamp Diode Structure

As Figure 7-2 shows, the outputs to this device have both positive and negative clamping diodes, and the inputs to this device have negative clamping diodes only.

CAUTION

Voltages beyond the values specified in the *Absolute Maximum Ratings* table can cause damage to the device. The input and output voltage ratings may be exceeded if the input and output clamp-current ratings are observed.

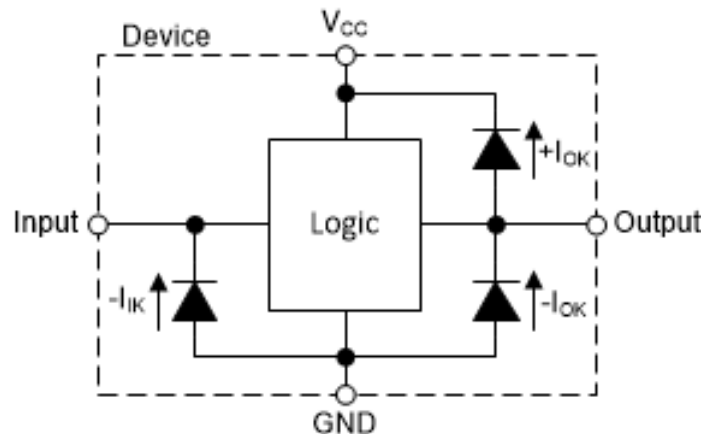


Figure 7-2. Electrical Placement of Clamping Diodes for Each Input and Output

7.4 Device Functional Modes

Table 7-1. Function Table

| INPUTS ⁽¹⁾ | | | OUTPUT ⁽²⁾ |
|-----------------------|---------|---|-----------------------|
| CLR | CLK | D | Q |
| L | X | X | L |
| H | L, H, ↓ | X | Q ₀ |
| H | ↑ | L | L |
| H | ↑ | H | H |

- (1) L = input low, H = input high, ↑ = input transitioning from low to high, ↓ = input transitioning from high to low, X = do not care
 (2) L = output low, H = output high, Q₀ = previous state

8 Application and Implementation

Note

Information in the following applications sections is not part of the TI component specification, and TI does not warrant its accuracy or completeness. TI's customers are responsible for determining suitability of components for their purposes, as well as validating and testing their design implementation to confirm system functionality.

8.1 Application Information

The SN74AHC273-Q1 is used to synchronize incoming data to the system clock on an 8-bit bus.

8.2 Typical Application

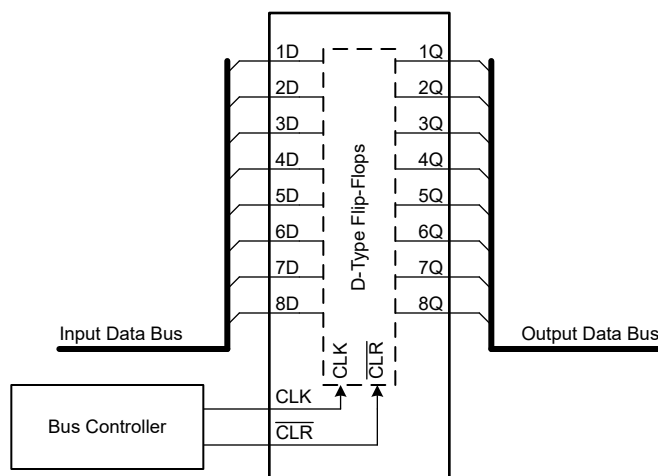


Figure 8-1. Typical Application Diagram

8.3 Design Requirements

8.3.1 Power Considerations

Ensure the desired supply voltage is within the range specified in the [Recommended Operating Conditions](#). The supply voltage sets the device's electrical characteristics of the device as described in the [Electrical Characteristics](#) section.

The positive voltage supply must be capable of sourcing current equal to the total current to be sourced by all outputs of the SN74AHC273-Q1 plus the maximum static supply current, I_{CC} , listed in the [Electrical Characteristics](#), and any transient current required for switching. The logic device can only source as much current that is provided by the positive supply source. Ensure the maximum total current through V_{CC} listed in the [Absolute Maximum Ratings](#) is not exceeded.

The ground must be capable of sinking current equal to the total current to be sunk by all outputs of the SN74AHC273-Q1 plus the maximum supply current, I_{CC} , listed in the [Electrical Characteristics](#), and any transient current required for switching. The logic device can only sink as much current that can be sunk into its ground connection. Ensure the maximum total current through GND listed in the [Absolute Maximum Ratings](#) is not exceeded.

The SN74AHC273-Q1 can drive a load with a total capacitance less than or equal to 50pF while still meeting all of the data sheet specifications. Larger capacitive loads can be applied; however, it is not recommended to exceed 50pF.

The SN74AHC273-Q1 can drive a load with total resistance described by $R_L \geq V_O / I_O$, with the output voltage and current defined in the [Electrical Characteristics](#) table with V_{OH} and V_{OL} . When outputting in the HIGH state, the output voltage in the equation is defined as the difference between the measured output voltage and the supply voltage at the V_{CC} pin.

Total power consumption can be calculated using the information provided in the [CMOS Power Consumption and Cpd Calculation application note](#).

Thermal increase can be calculated using the information provided in the [Thermal Characteristics of Standard Linear and Logic \(SLL\) Packages and Devices application note](#).

CAUTION

The maximum junction temperature, $T_{J(max)}$ listed in the [Absolute Maximum Ratings](#), is an additional limitation to prevent damage to the device. Do not violate any values listed in the [Absolute Maximum Ratings](#). These limits are provided to prevent damage to the device.

8.3.2 Input Considerations

Input signals must cross $V_{IL(max)}$ to be considered a logic LOW, and $V_{IH(min)}$ to be considered a logic HIGH. Do not exceed the maximum input voltage range found in the [Absolute Maximum Ratings](#).

Unused inputs must be terminated to either V_{CC} or ground. The unused inputs can be directly terminated if the input is completely unused, or they can be connected with a pull-up or pull-down resistor if the input will be used sometimes, but not always. A pull-up resistor is used for a default state of HIGH, and a pull-down resistor is used for a default state of LOW. The drive current of the controller, leakage current into the SN74AHC273-Q1 (as specified in the [Electrical Characteristics](#)), and the desired input transition rate limits the resistor size. A 10kΩ resistor value is often used due to these factors.

The SN74AHC273-Q1 has CMOS inputs and thus requires fast input transitions to operate correctly, as defined in the [Recommended Operating Conditions](#) table. Slow input transitions can cause oscillations, additional power consumption, and reduction in device reliability.

Refer to the [Feature Description](#) section for additional information regarding the inputs for this device.

8.3.3 Output Considerations

The positive supply voltage is used to produce the output HIGH voltage. Drawing current from the output will decrease the output voltage as specified by the V_{OH} specification in the [Electrical Characteristics](#). The ground voltage is used to produce the output LOW voltage. Sinking current into the output will increase the output voltage as specified by the V_{OL} specification in the [Electrical Characteristics](#).

Push-pull outputs that could be in opposite states, even for a very short time period, should never be connected directly together. This can cause excessive current and damage to the device.

Two channels within the same device with the same input signals can be connected in parallel for additional output drive strength.

Unused outputs can be left floating. Do not connect outputs directly to V_{CC} or ground.

Refer to the [Feature Description](#) section for additional information regarding the outputs for this device.

8.4 Detailed Design Procedure

1. Add a decoupling capacitor from V_{CC} to GND. The capacitor needs to be placed physically close to the device and electrically close to both the V_{CC} and GND pins. An example layout is shown in the *Layout* section.
2. Verify that the capacitive load at the output is $\leq 50\text{pF}$. This is not a hard limit; by design, however, it will optimize performance. This can be accomplished by providing short, appropriately sized traces from the SN74AHC273-Q1 to one or more of the receiving devices.
3. Verify that the resistive load at the output is larger than $(V_{CC} / I_{O(max)})\Omega$. Doing this prevents the maximum output current from the *Absolute Maximum Ratings* from being violated. Most CMOS inputs have a resistive load measured in $M\Omega$; much larger than the minimum calculated previously.
4. Thermal issues are rarely a concern for logic gates; the power consumption and thermal increase, however, can be calculated using the steps provided in the [CMOS Power Consumption and Cpd Calculation application note](#).

8.5 Application Curve

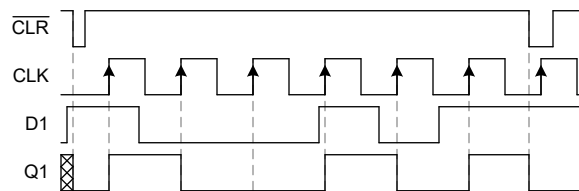


Figure 8-2. Application Timing Diagram, One Data Channel Shown

8.6 Power Supply Recommendations

The power supply can be any voltage between the minimum and maximum supply voltage rating listed in the [Recommended Operating Conditions](#).

Each V_{CC} terminal should have a good bypass capacitor to prevent power disturbance. For the SN74AHC273-Q1, a $0.1\mu\text{F}$ bypass capacitor is recommended. To reject different frequencies of noise, use multiple bypass capacitors in parallel. Capacitors with values of $0.1\mu\text{F}$ and $1\mu\text{F}$ are commonly used in parallel.

8.7 Layout

8.7.1 Layout Guidelines

- Bypass capacitor placement
 - Place near the positive supply terminal of the device
 - Provide an electrically short ground return path
 - Use wide traces to minimize impedance
 - Keep the device, capacitors, and traces on the same side of the board whenever possible
- Signal trace geometry
 - 8mil to 12mil trace width
 - Lengths less than 12cm to minimize transmission line effects
 - Avoid 90° corners for signal traces
 - Use an unbroken ground plane below signal traces
 - Flood fill areas around signal traces with ground
 - Parallel traces must be separated by at least 3x dielectric thickness
 - For traces longer than 12cm
 - Use impedance controlled traces
 - Source-terminate using a series damping resistor near the output
 - Avoid branches; buffer each signal that must branch separately

8.7.2 Layout Example

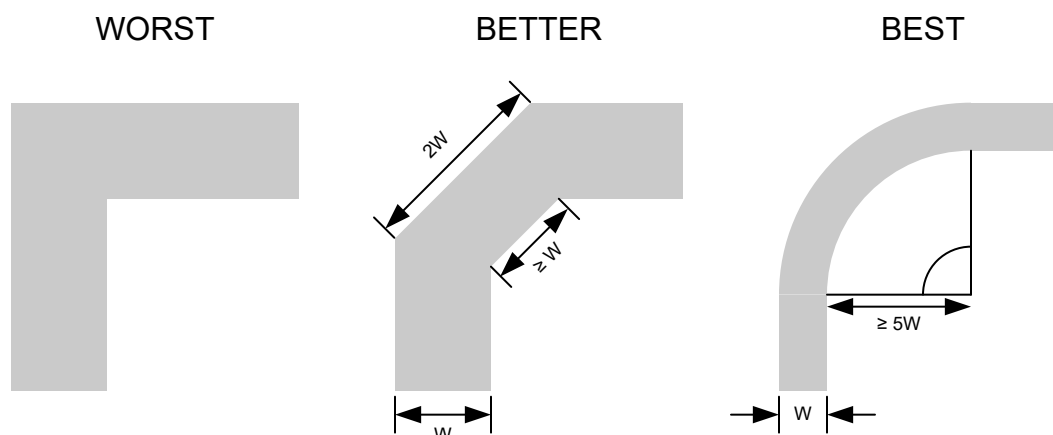


Figure 8-3. Example Trace Corners for Improved Signal Integrity

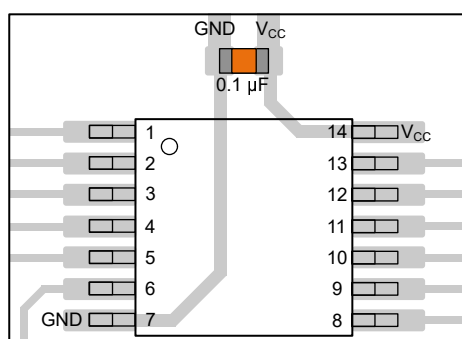


Figure 8-4. Example Bypass Capacitor Placement for TSSOP and Similar Packages

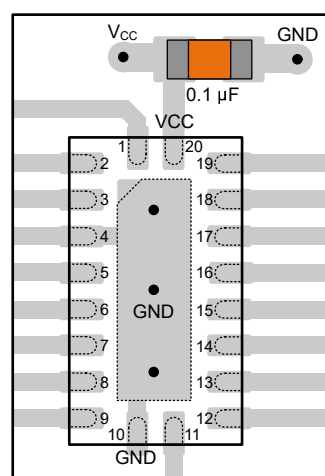


Figure 8-5. Example Bypass Capacitor Placement for WQFN and Similar Packages

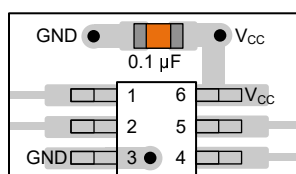


Figure 8-6. Example Bypass Capacitor Placement for SOT, SC70 and Similar Packages

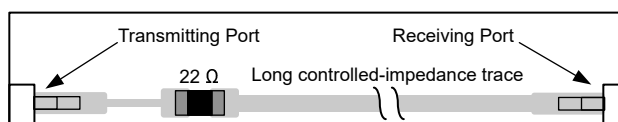


Figure 8-7. Example Damping Resistor Placement for Improved Signal Integrity

9 Device and Documentation Support

TI offers an extensive line of development tools. Tools and software to evaluate the performance of the device, generate code, and develop solutions are listed below.

9.1 Documentation Support

9.1.1 Related Documentation

For related documentation, see the following:

- Texas Instruments, [CMOS Power Consumption and \$C_{pd}\$ Calculation application note](#)
- Texas Instruments, [Designing With Logic application note](#)
- Texas Instruments, [Thermal Characteristics of Standard Linear and Logic \(SLL\) Packages and Devices application note](#)

9.2 Receiving Notification of Documentation Updates

To receive notification of documentation updates, navigate to the device product folder on [ti.com](https://www.ti.com). Click on *Notifications* to register and receive a weekly digest of any product information that has changed. For change details, review the revision history included in any revised document.

9.3 Support Resources

TI E2E™ [support forums](#) are an engineer's go-to source for fast, verified answers and design help — straight from the experts. Search existing answers or ask your own question to get the quick design help you need.

Linked content is provided "AS IS" by the respective contributors. They do not constitute TI specifications and do not necessarily reflect TI's views; see TI's [Terms of Use](#).

9.4 Trademarks

TI E2E™ is a trademark of Texas Instruments.

All trademarks are the property of their respective owners.

9.5 Electrostatic Discharge Caution



This integrated circuit can be damaged by ESD. Texas Instruments recommends that all integrated circuits be handled with appropriate precautions. Failure to observe proper handling and installation procedures can cause damage.

ESD damage can range from subtle performance degradation to complete device failure. Precision integrated circuits may be more susceptible to damage because very small parametric changes could cause the device not to meet its published specifications.

9.6 Glossary

[TI Glossary](#) This glossary lists and explains terms, acronyms, and definitions.

10 Revision History

NOTE: Page numbers for previous revisions may differ from page numbers in the current version.

| DATE | REVISION | NOTES |
|-----------|----------|-----------------|
| July 2025 | * | Initial Release |

11 Mechanical, Packaging, and Orderable Information

The following pages include mechanical, packaging, and orderable information. This information is the most current data available for the designated devices. This data is subject to change without notice and revision of this document. For browser-based versions of this data sheet, refer to the left-hand navigation.

PACKAGING INFORMATION

| Orderable part number | Status (1) | Material type (2) | Package Pins | Package qty Carrier | RoHS (3) | Lead finish/ Ball material (4) | MSL rating/ Peak reflow (5) | Op temp (°C) | Part marking (6) |
|------------------------------------|---------------|----------------------|------------------|-----------------------|-------------|--------------------------------------|-----------------------------------|--------------|---------------------|
| SN74AHC273QDGSRQ1 | Active | Production | VSSOP (DGS) 20 | 5000 LARGE T&R | Yes | NIPDAU | Level-1-260C-UNLIM | - | HA273Q |
| SN74AHC273QPWRQ1 | Active | Production | TSSOP (PW) 20 | 3000 LARGE T&R | Yes | NIPDAU | Level-1-260C-UNLIM | - | AHC273Q |
| SN74AHC273QWRKSRQ1 | Active | Production | VQFN (RKS) 20 | 3000 LARGE T&R | Yes | NIPDAU | Level-1-260C-UNLIM | - | AHC273Q |

⁽¹⁾ **Status:** For more details on status, see our [product life cycle](#).

⁽²⁾ **Material type:** When designated, preproduction parts are prototypes/experimental devices, and are not yet approved or released for full production. Testing and final process, including without limitation quality assurance, reliability performance testing, and/or process qualification, may not yet be complete, and this item is subject to further changes or possible discontinuation. If available for ordering, purchases will be subject to an additional waiver at checkout, and are intended for early internal evaluation purposes only. These items are sold without warranties of any kind.

⁽³⁾ **RoHS values:** Yes, No, RoHS Exempt. See the [TI RoHS Statement](#) for additional information and value definition.

⁽⁴⁾ **Lead finish/Ball material:** Parts may have multiple material finish options. Finish options are separated by a vertical ruled line. Lead finish/Ball material values may wrap to two lines if the finish value exceeds the maximum column width.

⁽⁵⁾ **MSL rating/Peak reflow:** The moisture sensitivity level ratings and peak solder (reflow) temperatures. In the event that a part has multiple moisture sensitivity ratings, only the lowest level per JEDEC standards is shown. Refer to the shipping label for the actual reflow temperature that will be used to mount the part to the printed circuit board.

⁽⁶⁾ **Part marking:** There may be an additional marking, which relates to the logo, the lot trace code information, or the environmental category of the part.

Multiple part markings will be inside parentheses. Only one part marking contained in parentheses and separated by a "~" will appear on a part. If a line is indented then it is a continuation of the previous line and the two combined represent the entire part marking for that device.

Important Information and Disclaimer: The information provided on this page represents TI's knowledge and belief as of the date that it is provided. TI bases its knowledge and belief on information provided by third parties, and makes no representation or warranty as to the accuracy of such information. Efforts are underway to better integrate information from third parties. TI has taken and continues to take reasonable steps to provide representative and accurate information but may not have conducted destructive testing or chemical analysis on incoming materials and chemicals. TI and TI suppliers consider certain information to be proprietary, and thus CAS numbers and other limited information may not be available for release.

In no event shall TI's liability arising out of such information exceed the total purchase price of the TI part(s) at issue in this document sold by TI to Customer on an annual basis.

OTHER QUALIFIED VERSIONS OF SN74AHC273-Q1 :

- Catalog : [SN74AHC273](#)

- Military : [SN54AHC273](#)

NOTE: Qualified Version Definitions:

- Catalog - TI's standard catalog product
- Military - QML certified for Military and Defense Applications

TAPE AND REEL INFORMATION



*All dimensions are nominal

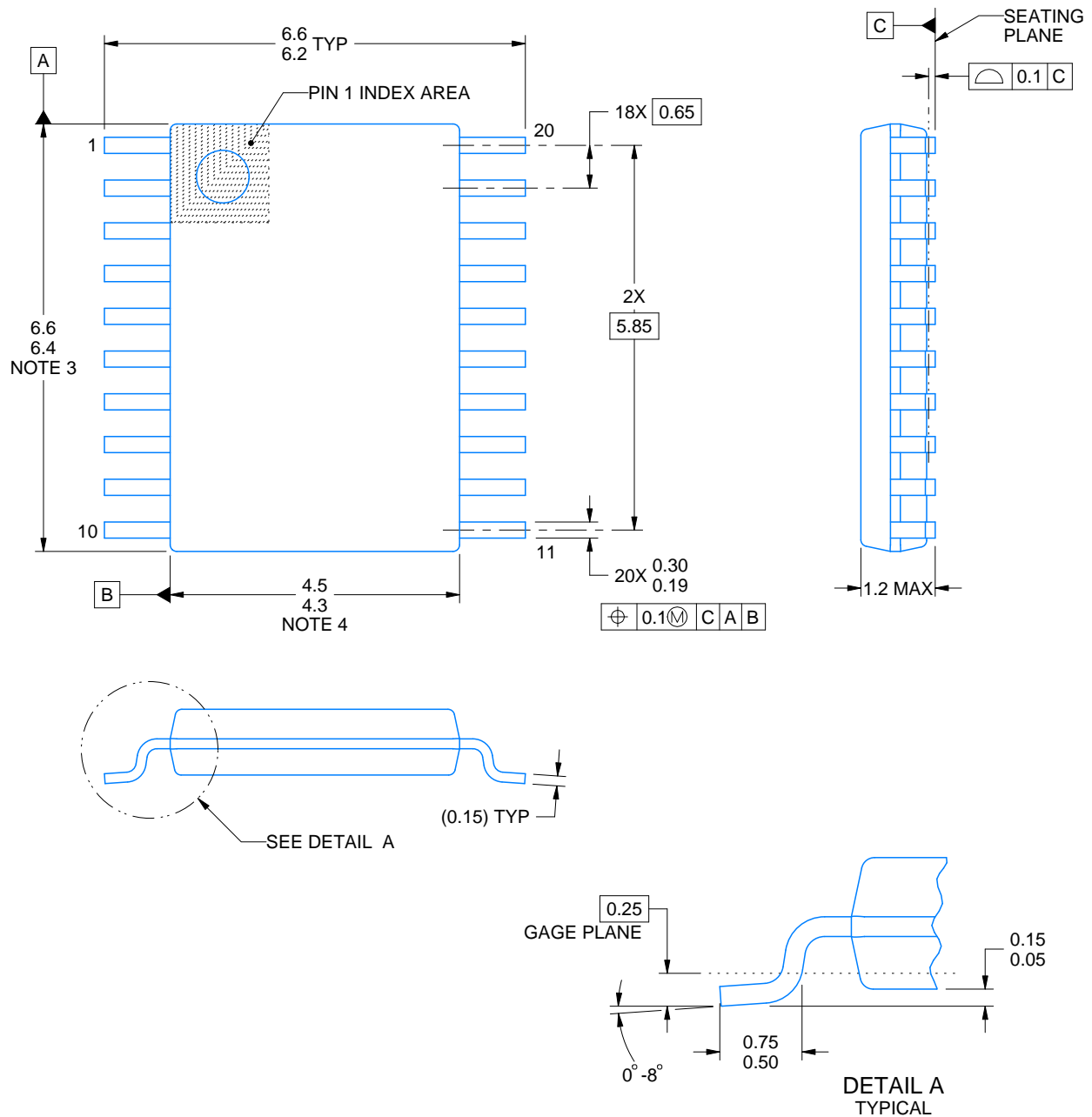
| Device | Package Type | Package Drawing | Pins | SPQ | Reel Diameter (mm) | Reel Width W1 (mm) | A0 (mm) | B0 (mm) | K0 (mm) | P1 (mm) | W (mm) | Pin1 Quadrant |
|--------------------|--------------|-----------------|------|------|--------------------|--------------------|---------|---------|---------|---------|--------|---------------|
| SN74AHC273QDGSRQ1 | VSSOP | DGS | 20 | 5000 | 330.0 | 16.4 | 5.4 | 5.4 | 1.45 | 8.0 | 16.0 | Q1 |
| SN74AHC273QPWRQ1 | TSSOP | PW | 20 | 3000 | 330.0 | 16.4 | 6.95 | 7.0 | 1.4 | 8.0 | 16.0 | Q1 |
| SN74AHC273QWRKSRQ1 | VQFN | RKS | 20 | 3000 | 180.0 | 12.4 | 2.8 | 4.8 | 1.2 | 4.0 | 12.0 | Q1 |

TAPE AND REEL BOX DIMENSIONS



*All dimensions are nominal

| Device | Package Type | Package Drawing | Pins | SPQ | Length (mm) | Width (mm) | Height (mm) |
|--------------------|--------------|-----------------|------|------|-------------|------------|-------------|
| SN74AHC273QDGSRQ1 | VSSOP | DGS | 20 | 5000 | 353.0 | 353.0 | 32.0 |
| SN74AHC273QPWRQ1 | TSSOP | PW | 20 | 3000 | 353.0 | 353.0 | 32.0 |
| SN74AHC273QWRKSRQ1 | VQFN | RKS | 20 | 3000 | 210.0 | 185.0 | 35.0 |



4220206/A 02/2017

NOTES:

1. All linear dimensions are in millimeters. Any dimensions in parenthesis are for reference only. Dimensioning and tolerancing per ASME Y14.5M.
2. This drawing is subject to change without notice.
3. This dimension does not include mold flash, protrusions, or gate burrs. Mold flash, protrusions, or gate burrs shall not exceed 0.15 mm per side.
4. This dimension does not include interlead flash. Interlead flash shall not exceed 0.25 mm per side.
5. Reference JEDEC registration MO-153.

EXAMPLE BOARD LAYOUT

PW0020A

TSSOP - 1.2 mm max height

SMALL OUTLINE PACKAGE



LAND PATTERN EXAMPLE
EXPOSED METAL SHOWN
SCALE: 10X



4220206/A 02/2017

NOTES: (continued)

6. Publication IPC-7351 may have alternate designs.
7. Solder mask tolerances between and around signal pads can vary based on board fabrication site.

EXAMPLE STENCIL DESIGN

PW0020A

TSSOP - 1.2 mm max height

SMALL OUTLINE PACKAGE



SOLDER PASTE EXAMPLE
BASED ON 0.125 mm THICK STENCIL
SCALE: 10X

4220206/A 02/2017

NOTES: (continued)

8. Laser cutting apertures with trapezoidal walls and rounded corners may offer better paste release. IPC-7525 may have alternate design recommendations.
9. Board assembly site may have different recommendations for stencil design.



4226367/A 10/2020

NOTES:

PowerPAD is a trademark of Texas Instruments.

1. All linear dimensions are in millimeters. Any dimensions in parenthesis are for reference only. Dimensioning and tolerancing per ASME Y14.5M.
2. This drawing is subject to change without notice.
3. This dimension does not include mold flash, protrusions, or gate burrs. Mold flash, protrusions, or gate burrs shall not exceed 0.15 mm per side.
4. No JEDEC registration as of September 2020.
5. Features may differ or may not be present.

EXAMPLE BOARD LAYOUT

DGS0020A

VSSOP - 1.1 mm max height

SMALL OUTLINE PACKAGE



4226367/A 10/2020

NOTES: (continued)

6. Publication IPC-7351 may have alternate designs.
7. Solder mask tolerances between and around signal pads can vary based on board fabrication site.
8. This package is designed to be soldered to a thermal pad on the board. For more information, see Texas Instruments literature numbers SLMA002 (www.ti.com/lit/slma002) and SLMA004 (www.ti.com/lit/slma004).
9. Size of metal pad may vary due to creepage requirement.
10. Vias are optional depending on application, refer to device data sheet. It is recommended that vias under paste be filled, plugged or tented.

EXAMPLE STENCIL DESIGN

DGS0020A

VSSOP - 1.1 mm max height

SMALL OUTLINE PACKAGE



SOLDER PASTE EXAMPLE
BASED ON 0.125 mm THICK STENCIL
SCALE: 16X

4226367/A 10/2020

NOTES: (continued)

11. Laser cutting apertures with trapezoidal walls and rounded corners may offer better paste release. IPC-7525 may have alternate design recommendations.
12. Board assembly site may have different recommendations for stencil design.

GENERIC PACKAGE VIEW

RKS 20

VQFN - 1 mm max height

2.5 x 4.5, 0.5 mm pitch

PLASTIC QUAD FLATPACK - NO LEAD

This image is a representation of the package family, actual package may vary.
Refer to the product data sheet for package details.



IMPORTANT NOTICE AND DISCLAIMER

TI PROVIDES TECHNICAL AND RELIABILITY DATA (INCLUDING DATA SHEETS), DESIGN RESOURCES (INCLUDING REFERENCE DESIGNS), APPLICATION OR OTHER DESIGN ADVICE, WEB TOOLS, SAFETY INFORMATION, AND OTHER RESOURCES "AS IS" AND WITH ALL FAULTS, AND DISCLAIMS ALL WARRANTIES, EXPRESS AND IMPLIED, INCLUDING WITHOUT LIMITATION ANY IMPLIED WARRANTIES OF MERCHANTABILITY, FITNESS FOR A PARTICULAR PURPOSE OR NON-INFRINGEMENT OF THIRD PARTY INTELLECTUAL PROPERTY RIGHTS.

These resources are intended for skilled developers designing with TI products. You are solely responsible for (1) selecting the appropriate TI products for your application, (2) designing, validating and testing your application, and (3) ensuring your application meets applicable standards, and any other safety, security, regulatory or other requirements.

These resources are subject to change without notice. TI grants you permission to use these resources only for development of an application that uses the TI products described in the resource. Other reproduction and display of these resources is prohibited. No license is granted to any other TI intellectual property right or to any third party intellectual property right. TI disclaims responsibility for, and you will fully indemnify TI and its representatives against, any claims, damages, costs, losses, and liabilities arising out of your use of these resources.

TI's products are provided subject to [TI's Terms of Sale](#) or other applicable terms available either on [ti.com](https://www.ti.com) or provided in conjunction with such TI products. TI's provision of these resources does not expand or otherwise alter TI's applicable warranties or warranty disclaimers for TI products.

TI objects to and rejects any additional or different terms you may have proposed.

Mailing Address: Texas Instruments, Post Office Box 655303, Dallas, Texas 75265
Copyright © 2025, Texas Instruments Incorporated