



## 目录

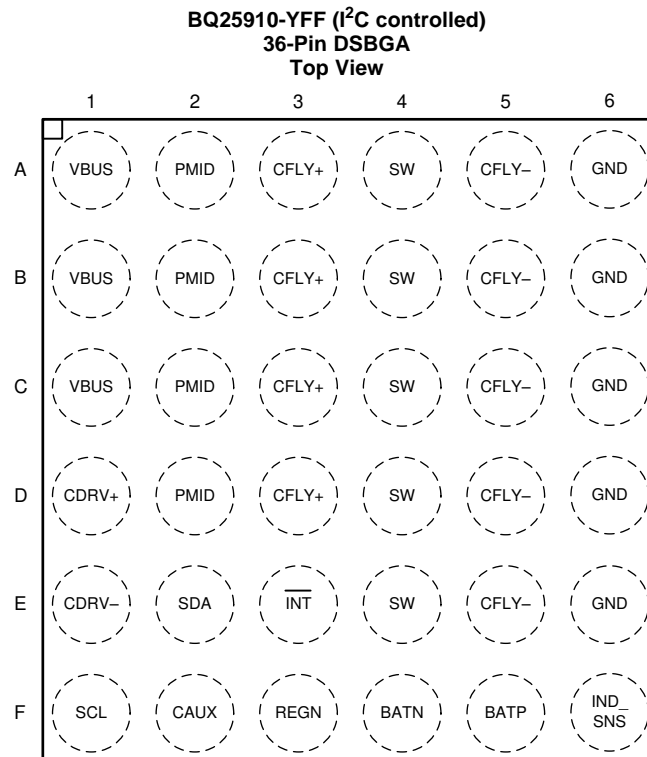
<b>1</b>	<b>特性</b>	<b>1</b>	7.5	Programming	24
<b>2</b>	<b>应用</b>	<b>1</b>	7.6	Register Maps	28
<b>3</b>	<b>说明</b>	<b>1</b>	<b>8</b>	<b>Application and Implementation</b>	<b>43</b>
<b>4</b>	<b>修订历史记录</b>	<b>2</b>	8.1	Application Information	43
<b>5</b>	<b>Pin Configuration and Functions</b>	<b>3</b>	8.2	Typical Application	43
<b>6</b>	<b>Specifications</b>	<b>5</b>	<b>9</b>	<b>Power Supply Recommendations</b>	<b>50</b>
6.1	Absolute Maximum Ratings	5	<b>10</b>	<b>Layout</b>	<b>51</b>
6.2	ESD Ratings	5	10.1	Layout Guidelines	51
6.3	Recommended Operating Conditions	6	10.2	Layout Example	52
6.4	Thermal Information	6	<b>11</b>	<b>器件和文档支持</b>	<b>53</b>
6.5	Electrical Characteristics	7	11.1	器件支持	53
6.6	Timing Requirements	10	11.2	接收文档更新通知	53
6.7	Typical Characteristics	11	11.3	社区资源	53
<b>7</b>	<b>Detailed Description</b>	<b>13</b>	11.4	商标	53
7.1	Overview	13	11.5	静电放电警告	53
7.2	Functional Block Diagram	14	11.6	Glossary	53
7.3	Feature Description	14	<b>12</b>	<b>机械、封装和可订购信息</b>	<b>53</b>
7.4	Device Functional Modes	21			

## 4 修订历史记录

Changes from Revision A (February 2018) to Revision B	Page
• 已更改 $t_{BAT\_LOWV\_DGL}$ from 20 ms to 170 ms in Timing Requirements section	11
• Changed DEV_REV default value from 0b001 to 0b010 in REG0D register <a href="#">Part Information Register (Address = Dh)</a> [reset = 0Ah]	42

Changes from Original (September 2017) to Revision A	Page
• 已更改 将“预告信息”更改为“生产数据”	1

## 5 Pin Configuration and Functions



(1) Top View = Xray through a soldered down part with A1 starting in upper left hand corner.

### Pin Functions

PIN		I/O	DESCRIPTION
NAME	NO.		
BATN	F4	AI	<b>Negative Battery Sense Terminal</b> – Kelvin connect via 100-Ω resistor as close as possible to negative battery terminal
BATP	F5	AI	<b>Positive Battery Sense Terminal</b> – Kelvin connect via 100-Ω resistor as close as possible to positive battery terminal
CAUX	F2	P	<b>Auxiliary Capacitor</b> – Bypass CAUX to GND with at least a 4.7-μF, 10-V ceramic capacitor
CDRV+	D1	P	<b>Gate Drive Supply Positive Terminal</b> – CDRV is used to generate multilevel gate drive rails. Connect a 220-nF, 6.3-V ceramic capacitor across CDRV+ and CDRV-.
CDRV-	E1	P	<b>Gate Drive Supply Negative Terminal</b> – CDRV is used to generate multilevel gate drive rails. Connect a 220-nF, 6.3-V ceramic capacitor across DRV+ and DRV-.
CFLY+	A3	P	<b>Flying Capacitor Positive Terminal</b> – Connect 20-μF, 16-V ceramic capacitor across CFLY+ and CFLY-. Refer to <a href="#">Application and Implementation</a> section for more information on selecting CFLY.
	B3		
	C3		
	D3		
CFLY-	A5	P	<b>Flying Capacitor Negative Terminal</b> – Connect 20-μF, 16-V ceramic capacitor across CFLY+ and CFLY-. Refer to <a href="#">Application and Implementation</a> section for more information on selecting CFLY.
	B5		
	C5		
	D5		
	E5		
GND	A6	-	<b>Ground Return</b>
	B6		
	C6		
	D6		
	E6		
IND_SNS	F6	AI	<b>Output Inductor Sense Input</b> – Kelvin connect as close as possible to the output of the switched inductor.
$\overline{\text{INT}}$	E3	DO	<b>Open-Drain Interrupt Output</b> – Connect $\overline{\text{INT}}$ to the logic rail via a 10-kΩ resistor. The $\overline{\text{INT}}$ pin sends active low, 256-μs pulse to the host to report charger device status and fault.
PMID	A2	P	<b>Reverse Blocking MOSFET and QHSA MOSFET Connection</b> – Given the total input capacitance, place 1 μF on VBUS, and the rest on PMID, as close to the device as possible. Typical value: 10-μF, 25-V ceramic capacitor
	B2		
	C2		
	D2		
REGN	F3	P	<b>Gate Drive Supply</b> – Bias supply for internal MOSFETs driver and device. Bypass REGN to GND with a 4.7-μF, 10-V ceramic capacitor.
SCL	F1	DI	<b>I<sup>2</sup>C Interface Open-Drain Clock Line</b> – Connect SCL to the logic rail through a 10-kΩ resistor.
SDA	E2	DIO	<b>I<sup>2</sup>C Interface Open-Drain Data Line</b> – Connect SDA to the logic rail through a 10-kΩ resistor.
SW	A4	P	<b>Inductor Connection</b> – Connect to the switched side of the external inductor (Recommended: 330 nH for up to 9-V applications or 470 nH for up to 12-V applications). Refer to <a href="#">Application and Implementation</a> section for more information on selecting inductor.
	B4		
	C4		
	D4		
	E4		
VBUS	A1	P	<b>Input Supply</b> – VBUS is connected to the external DC supply. Bypass VBUS to GND with at least 1-μF, 25-V ceramic capacitor, placed as close to the device as possible.
	B1		
	C1		

## 6 Specifications

### 6.1 Absolute Maximum Ratings

over operating free-air temperature range (unless otherwise noted)<sup>(1)</sup>

			MIN	MAX	UNIT
Voltage range (with respect to GND)	VBUS (converter not switching)		–2	20	V
	PMID (converter not switching)		–0.3	20	V
	CDRV+, CDRV–		–0.3	20	V
	CFLY+		–0.3	16 <sup>(2)</sup>	V
	CFLY+ to SW, SW to CFLY–, CFLY– to GND, CAUX to GND	DC	–0.3	7	V
		Pulse < 30ns	–0.3	11	V
	BATP, BATN, IND_SNS		–0.3	6	V
	REGN		–0.3	6	V
Voltage range (with respect to GND)	SDA, SCL, /INT		–0.3	6	V
Output sink current	/INT			6	mA
Junction Temperature, T <sub>J</sub>			–40	150	°C
Storage temperature, T <sub>stg</sub>			–40	150	°C

- (1) Stresses beyond those listed under *Absolute Maximum Ratings* may cause permanent damage to the device. These are stress ratings only, which do not imply functional operation of the device at these or any other conditions beyond those indicated under *Recommended Operating Conditions*. Exposure to absolute-maximum-rated conditions for extended periods may affect device reliability.
- (2) This condition is contingent on the fact that  $0V < V_{CFLY} < 8V$

### 6.2 ESD Ratings

			VALUE	UNIT
V <sub>(ESD)</sub>	Electrostatic discharge	Human body model (HBM), per ANSI/ESDA/JEDEC JS-001 <sup>(1)</sup>	±2000	V
		Charged device model (CDM), per JEDEC specification JESD22-C101 <sup>(2)</sup>	±250	V

- (1) JEDEC document JEP155 states that 500-V HBM allows safe manufacturing with a standard ESD control process.
- (2) JEDEC document JEP157 states that 250-V CDM allows safe manufacturing with a standard ESD control process.

### 6.3 Recommended Operating Conditions

over operating free-air temperature range (unless otherwise noted)<sup>(1)</sup>

		MIN	NOM	MAX	UNIT
V <sub>VBUS</sub>	Input voltage	3.9		14 <sup>(1)</sup>	V
I <sub>VBUS</sub>	Average input current (VBUS)			3.3	A
I <sub>SW</sub>	Average output current (SW)			6	A
V <sub>BAT</sub>	Battery voltage (BATP - BATN)			4.775	V
T <sub>A</sub>	Operating free-air temperature	–40		85	°C

- (1) The inherent switching noise voltage spikes should not exceed the absolute maximum rating on either CFLY+, SW, or CFLY- pins. A tight layout minimizes switching noise.

### 6.4 Thermal Information

THERMAL METRIC <sup>(1)</sup>		BQ25910	UNIT
		YFF (DSBGA)	
		36-PINS	
R <sub>θJA</sub>	Junction-to-ambient thermal resistance	52.8	°C/W
R <sub>θJC(top)</sub>	Junction-to-case (top) thermal resistance	0.3	°C/W
R <sub>θJB</sub>	Junction-to-board thermal resistance	11.1	°C/W
Ψ <sub>JT</sub>	Junction-to-top characterization parameter	0.2	°C/W
Ψ <sub>JB</sub>	Junction-to-board characterization parameter	11.1	°C/W

- (1) For more information about traditional and new thermal metrics, see the Semiconductor and IC Package Thermal Metrics application report, [SPRA953](#).

## 6.5 Electrical Characteristics

$V_{VBUS\_UVLOZ} < V_{VBUS} < V_{VBUS\_OV}$  and  $V_{VBUS} > V_{BAT} + V_{SLEEP}$ ,  $T_J = -40^{\circ}\text{C}$  to  $+125^{\circ}\text{C}$ , and  $T_J = 25^{\circ}\text{C}$  for typical values (unless otherwise noted)

PARAMETER		TEST CONDITIONS	MIN	TYP	MAX	UNIT
QUIESCENT CURRENTS						
I <sub>BAT</sub>	Battery discharge current (BATP, BATN, SW)	VBAT = 4.5V, VBUS = 0 - 5V, SCL, SDA = 0V or 1.8V, T <sub>J</sub> < 85°C, EN_CHG = 0	6.5		10	μA
I <sub>VBUS_HIZ</sub>	Input supply current (VBUS) in HIZ	VBUS = 5V, High-Z Mode, no battery			30	μA
		VBUS < V <sub>VBUS_OV</sub> , High-Z Mode, no battery			50	μA
I <sub>VBUS</sub>	Input supply current (VBUS)	VBUS > V <sub>SLEEPZ</sub> , V <sub>BAT</sub> = 3.8V, ICHG = 0A, converter not switching			20	μA
		VBUS > V <sub>SLEEPZ</sub> , V <sub>BAT</sub> = 3.8V, converter switching, IOUT = 0A	13			mA
VBUS / VBAT POWER UP						
V <sub>VBUS_OP</sub>	VBUS operating range		3.9		14	V
V <sub>VBUS_UVLOZ</sub>	VBUS rising for active I2C, no battery	VBUS rising	3.6			V
V <sub>SLEEP</sub>	Enter sleep mode threshold	VBUS falling, VBUS - VBAT, VBAT = 4V, T <sub>J</sub> = 0°C - 85°C	15	60	110	mV
V <sub>SLEEPZ</sub>	Exit sleep mode threshold	VBUS rising, VBUS - VBAT, VBAT = 4V, T <sub>J</sub> = 0°C - 85°C	115	220	275	mV
V <sub>VBUS_OV</sub>	VBUS over-voltage rising threshold	VBUS rising	14	14.3	14.7	V
	VBUS over-voltage falling threshold	VBUS falling	13.3	13.65	14	V
V <sub>BAT_UVLOZ</sub>	Battery for active I2C, no VBUS		2.3			V
V <sub>POORSRC</sub>	Bad adapter detection threshold		3.7			V
I <sub>POORSRC</sub>	Bad adapter detection current source		20			mA
POWER-PATH						
R <sub>ON_QBLK</sub> (QBLK)	Top reverse blocking MOSFET on-resistance between VBUS and PMID (QBLK)	T <sub>J</sub> = -40°C - 125°C	14		22	mΩ
R <sub>ON_QHSA</sub> (Q1)	Outer, high-side switching MOSFET on-resistance between PMID and CFLY+ (Q1)	T <sub>J</sub> = -40°C - 125°C	22		40	mΩ
R <sub>ON_QHSB</sub> (Q3)	Inner, high-side switching MOSFET on-resistance between CFLY+ and SW (Q3)	T <sub>J</sub> = -40°C - 125°C	12		20	mΩ
R <sub>ON_QLSB</sub> (Q4)	Inner, low-side switching MOSFET on-resistance between SW and CFLY- (Q4)	T <sub>J</sub> = -40°C - 125°C	8		13	mΩ
R <sub>ON_QLSA</sub> (Q2)	Outer, low-side switching MOSFET on-resistance between CFLY- and GND (Q2)	T <sub>J</sub> = -40°C - 125°C	8		13	mΩ
BATTERY CHARGER						
V <sub>REG_RANGE</sub>	Typical charge voltage regulation range		3.5		4.775	V
V <sub>REG_STEP</sub>	Typical charge voltage regulation step		5			mV
V <sub>REG_ACC</sub>	Charge voltage regulation accuracy	VREG = 4.2V or 4.35V or 4.4V, T <sub>J</sub> = -40°C - 85°C	-0.4		0.4	%
I <sub>CHG_RANGE</sub>	Typical charge current regulation range		1000		6000	mA
I <sub>CHG_STEP</sub>	Typical charge current regulation step		50			mA
I <sub>CHG_ACC</sub>	Charge current regulation accuracy	ICHG = 2A, 3A, 4A, 5A, 6A, T <sub>J</sub> = -40°C - 85°C	-10		10	%

## Electrical Characteristics (continued)

$V_{VBUS\_UVLOZ} < V_{VBUS} < V_{VBUS\_OV}$  and  $V_{VBUS} > V_{BAT} + V_{SLEEP}$ ,  $T_J = -40^{\circ}\text{C}$  to  $+125^{\circ}\text{C}$ , and  $T_J = 25^{\circ}\text{C}$  for typical values (unless otherwise noted)

PARAMETER		TEST CONDITIONS	MIN	TYP	MAX	UNIT
I <sub>TERM_ACC</sub>	Termination current regulation accuracy	VBUS = 9V, ICHG = 4A, ITERM = 1.0A, T <sub>J</sub> = 0°C - 85°C	0.9	1	1.1	A
V <sub>BAT_SHORT</sub>	Short battery voltage falling threshold	VBAT falling	1.85	2.00	2.15	V
V <sub>BAT_LOWV</sub>	VBAT LOWV Rising threshold to start fast-charging	VBAT rising, VBATLOW = 3.2V	3.1	3.2	3.3	V
	VBAT LOWV Falling threshold to stop fast-charging	VBAT falling, VBATLOW = 3.2V	2.9	3	3.1	V
V <sub>BAT_LOWV</sub>	VBAT LOWV Rising threshold to start fast-charging	VBAT rising, VBATLOW = 3.5V	3.4	3.5	3.6	V
	VBAT LOWV Falling threshold to stop fast-charging	VBAT falling, VBATLOW = 3.5V	3.2	3.3	3.4	V
R <sub>BATP</sub>	BATP Input resistance	VBAT = 4V, VBUS = 5V, EN_CHG = 0	0.6			MΩ
R <sub>BATN</sub>	BATN Input resistance	VBAT = 4V, VBUS = 5V, EN_CHG = 0	0.6			MΩ
INPUT VOLTAGE / CURRENT REGULATION						
V <sub>INDPM_RANGE</sub>	Input voltage regulation range		3.9	14		V
V <sub>INDPM_STEP</sub>	Input voltage regulation step		100			mV
V <sub>INDPM_ACC</sub>	Input voltage regulation accuracy	VINDPM = 4.3V	4.121	4.3	4.447	V
		VINDPM = 7.8V	7.566	7.8	8.034	V
		VINDPM = 10.8V	10.476	10.8	11.124	V
I <sub>INDPM_RANGE</sub>	Input current regulation range		500	3600		mA
I <sub>INDPM_STEP</sub>	Input current regulation step		100			mA
I <sub>INDPM_ACC</sub>	Input current regulation accuracy	IINDPM = 500mA, T <sub>J</sub> = −40°C - 85°C	410	500		mA
		IINDPM = 1500mA, T <sub>J</sub> = −40°C - 85°C	1275	1500		mA
		IINDPM = 2500mA, T <sub>J</sub> = −40°C - 85°C	2125	2500		mA
		IINDPM = 3000mA, T <sub>J</sub> = −40°C - 85°C	2540	3000		mA
BATTERY OVER-VOLTAGE PROTECTION						
V <sub>BAT_OVP</sub>	Battery over-voltage rising threshold	VBAT rising, as percentage of VREG	102	104	106	%
	Battery over-voltage falling threshold	VBAT falling, as percentage of VREG	100	102	103	%
THERMAL REGULATION AND THERMAL SHUTDOWN						
T <sub>REG</sub>	Junction temperature regulation accuracy	TREG = 80°C	80			°C
		TREG = 120°C	120			°C
T <sub>SHUT</sub>	Thermal Shutdown Rising threshold	Temperature Increasing	150			°C
	Thermal Shutdown Falling threshold	Temperature Decreasing	120			°C
BUCK MODE OPERATION						
F <sub>SW</sub>	PWM switching frequency	Switching-node frequency	1.35	1.5	1.65	MHz
D <sub>MAX</sub>	Maximum PWM Duty Cycle		97			%
REGN LDO						
V <sub>REGN</sub>	REGN LDO output voltage	V <sub>VBUS</sub> = 12V, I <sub>REGN</sub> = 40mA	4.85	5		V
		V <sub>VBUS</sub> = 5V, I <sub>REGN</sub> = 20mA	4.7	4.8		V
I <sub>REGN</sub>	REGN LDO current limit	V <sub>VBUS</sub> = 5V, V <sub>REGN</sub> = 3.8V	50			mA

## Electrical Characteristics (continued)

$V_{VBUS\_UVLOZ} < V_{VBUS} < V_{VBUS\_OV}$  and  $V_{VBUS} > V_{BAT} + V_{SLEEP}$ ,  $T_J = -40^{\circ}\text{C}$  to  $+125^{\circ}\text{C}$ , and  $T_J = 25^{\circ}\text{C}$  for typical values (unless otherwise noted)

PARAMETER		TEST CONDITIONS	MIN	TYP	MAX	UNIT
<b>I2C INTERFACE (SCL, SDA)</b>						
$V_{IH}$	Input high threshold level, SDA and SCL	Pull-up rail 1.8V	1.3			V
$V_{IL}$	Input low threshold level, SDA and SCL	Pull-up rail 1.8V			0.4	V
$V_{OL}$	Output low threshold level, SDA	Sink current = 5mA			0.4	V
$I_{BIAS}$	High level leakage current, SDA and SCL	Pull-up rail 1.8V			1	$\mu\text{A}$
<b>LOGIC OUTPUT PIN (/INT)</b>						
$V_{OL}$	Output low threshold level	Sink current = 5mA			0.4	V
$I_{OUT\_BIAS}$	High level leakage current	Pull-up rail 1.8V			1	$\mu\text{A}$

## 6.6 Timing Requirements

PARAMETER		TEST CONDITIONS	MIN	TYP	MAX	UNIT
<b>VBUS/BAT POWER UP</b>						
$t_{VBUS\_OV}$	VBUS OVP reaction time	VBUS rising above $V_{BUS\_OV}$ threshold to converter turn off		200		ns
$t_{POORSRC}$	Bad adapter detection duration			30		ms
<b>BATTERY CHARGER</b>						
$t_{BAT\_LOWV\_DGL}$	Deglitchg time for BAT_LOWV comparator	VBAT crossing VBAT_LOWV threshold (rising and falling)		170		ms
$t_{TERM\_DGL}$	Deglitch time for charge termination	Charge current falling below $I_{TERM}$		250		ms
$t_{BATOVP\_DGL}$	Deglitch time for battery over-voltage to disable charge			1		$\mu$ s
$t_{SAFETY}$	Charge Safety Timer Accuracy	CHG_TIMER[1:0] = 12 hours	10.8	12	13.2	hr
<b>I2C INTERFACE</b>						
$f_{SCL}$	SCL clock frequency				1000	kHz
<b>DIGITAL CLOCK AND WATCHDOG TIMER</b>						
$f_{DIG}$	Digital clock	REGN LDO enabled	1.35	1.5	1.65	MHz
$t_{WDT}$	Watchdog Reset time	WATCHDOG[1:0] = 160s, REGN LDO enabled	136	160		sec

## 6.7 Typical Characteristics

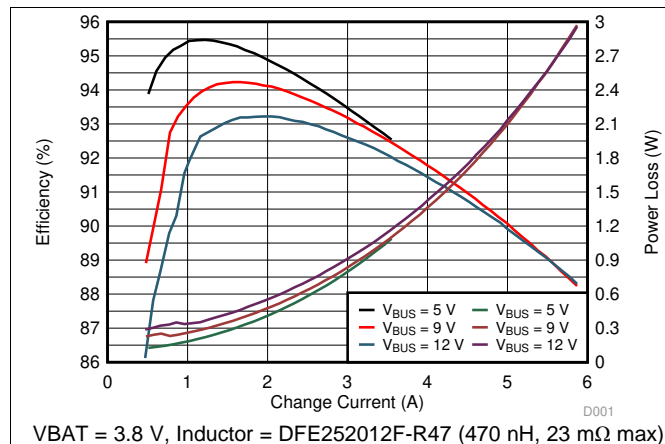


图 1. Charge Efficiency vs Charge Current

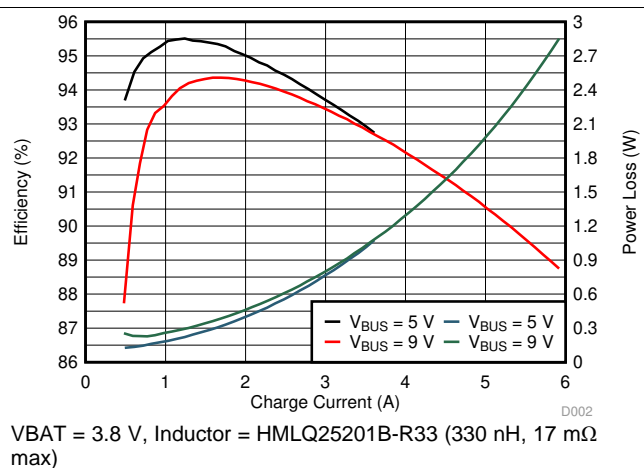


图 2. Charge Efficiency vs Charge Current

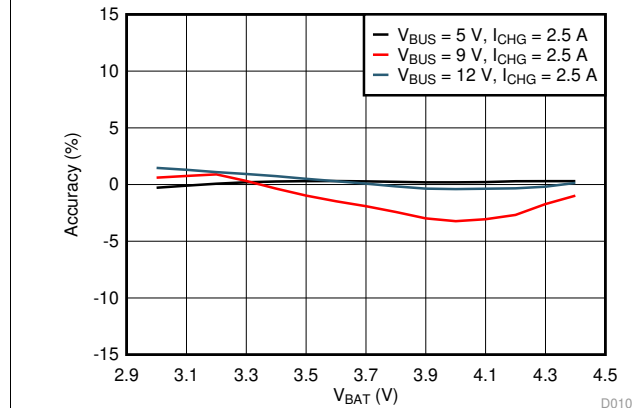


图 3. Charge Current Accuracy vs Battery Voltage

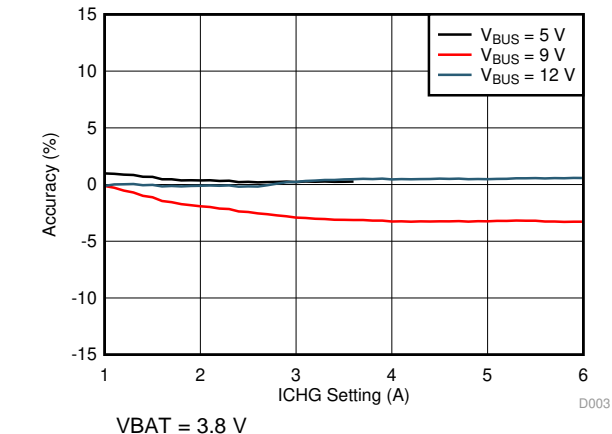


图 4. Charge Current Accuracy vs I²C ICHG Setting

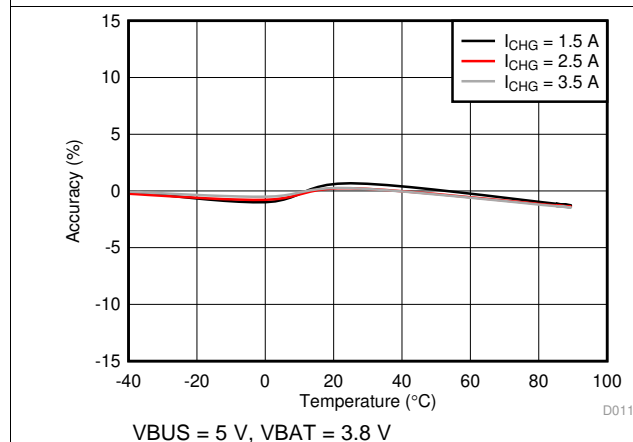


图 5. Charge Current Accuracy vs Temperature

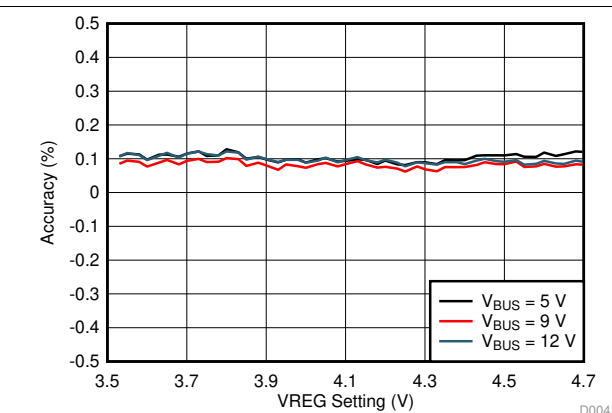


图 6. Battery Voltage Regulation Accuracy vs I²C VREG Setting

## Typical Characteristics (接下页)

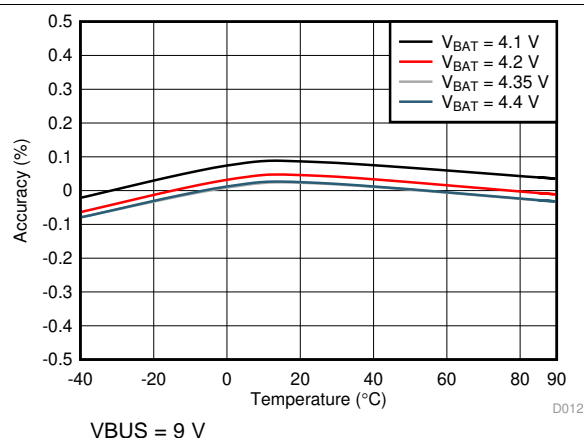


图 7. Battery Voltage Regulation Accuracy vs Temperature

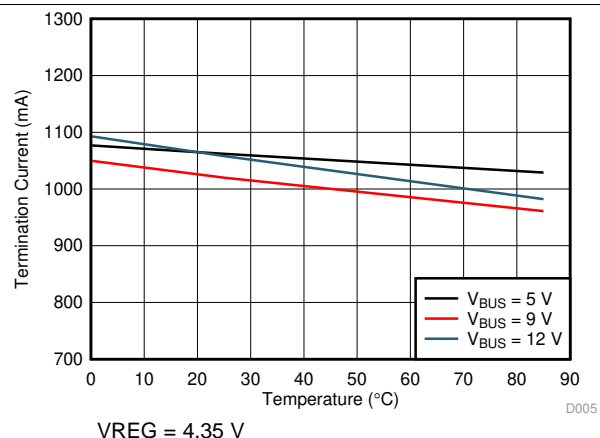


图 8. Termination Current vs Temperature

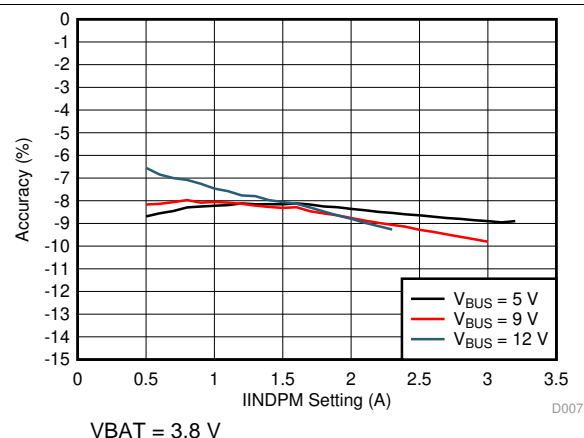


图 9. Input Current Limit Accuracy vs I<sup>2</sup>C IINDPM Setting

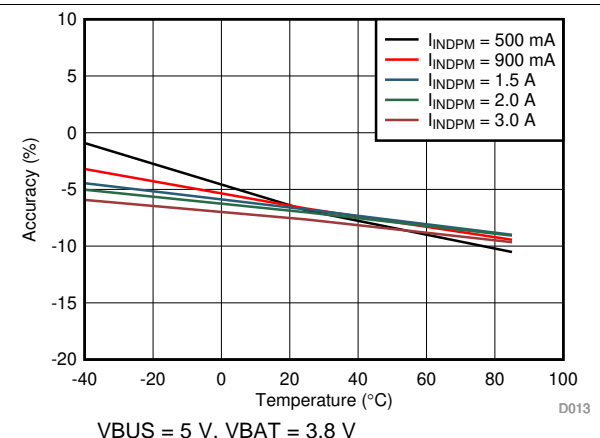


图 10. Input Current Limit Accuracy vs Temperature

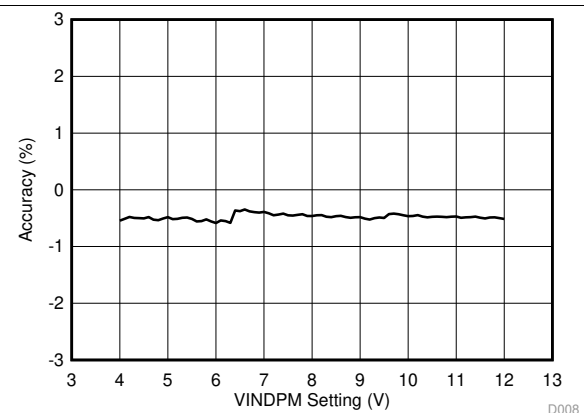


图 11. Input Voltage Limit Accuracy vs I<sup>2</sup>C VINDPM Setting

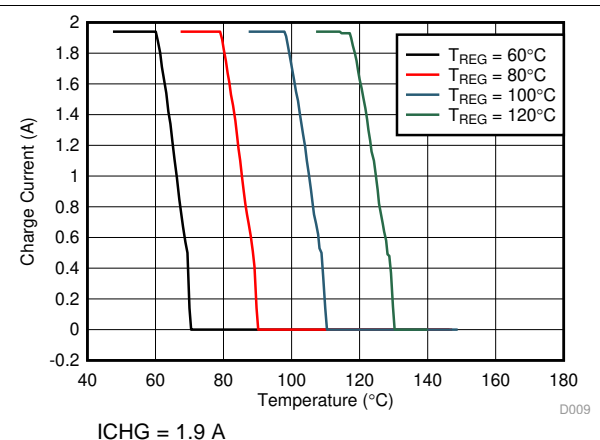


图 12. Charge Current vs Temperature

## 7 Detailed Description

### 7.1 Overview

The BQ25910 is an integrated three-level switch-mode parallel battery charge management device for single cell Li-ion and Li-polymer batteries. Utilization of the three-level converter maintains highest switch-mode operation efficiency while reducing solution footprint and increasing power density. The device supports fast charging with high input voltage for a wide range of portable devices. The solution integrates reverse-blocking FET ( $Q_{BLK}$ ), and four switching FETs ( $Q_{HSA}$ ,  $Q_{HSB}$ ,  $Q_{LSB}$ ,  $Q_{LSA}$ ). The I<sup>2</sup>C serial interface with charging and system settings makes the device a truly flexible solution.

The device supports a wide range of input sources, including standard USB host port, USB charging port, and USB compliant adjustable high voltage adapter. The device is compliant with USB 2.0 and USB 3.0 power specifications with input current and voltage regulation.

After initiating a charging cycle with host control, the device completes a charging cycle without software control. It automatically detects battery voltage and charges the battery in two-phases: constant current and constant voltage. At the end of the charging cycle, the charger automatically terminates when the charge current is below a preset limit (termination current) in the constant voltage phase.

The device provides various safety features for battery charging, including charging safety timer, battery over-voltage, and over-current protections. Thermal regulation reduces charge current when the device junction temperature exceeds 120°C (programmable via I<sup>2</sup>C). The  $\overline{INT}$  output immediately notifies the host when the charger changes state or a fault occurs.

The BQ25910 is available in space-saving 36-bump 2.41 x 2.44 mm<sup>2</sup> WCSP.

## 7.2 Functional Block Diagram

The device is a highly integrated 6-A three-level switch-mode parallel battery charger for single-cell Li-ion and Li-polymer batteries. It integrates a reverse-blocking FET (QBLK), four switching FETs for three-level operation (QHSA – QLSA), and bootstrap cap control to drive HS gates.

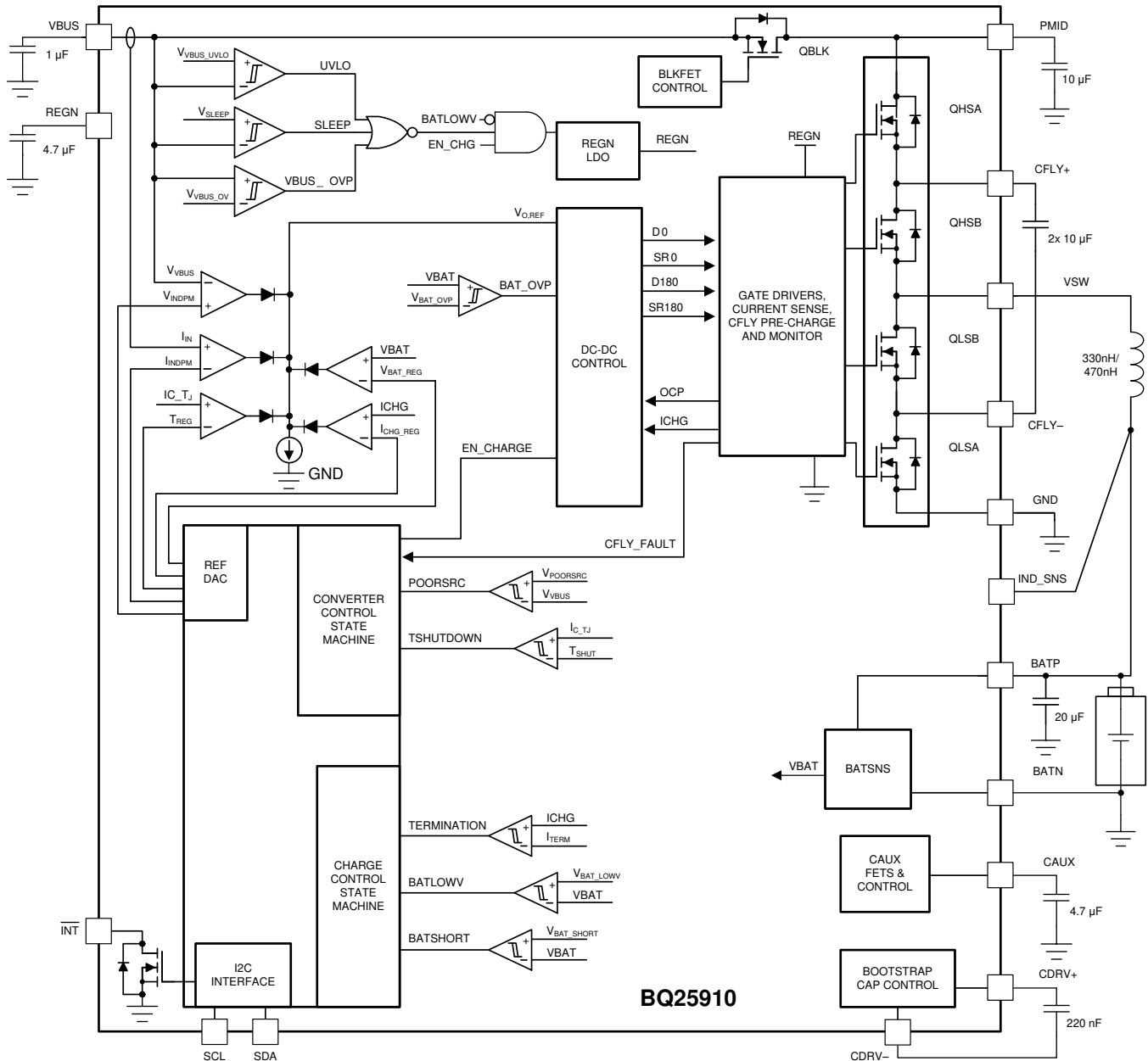


图 13. BQ25910 I²C Controlled Functional Block Diagram

## 7.3 Feature Description

### 7.3.1 Device Power-On-Reset (POR)

The internal bias circuits are powered from the higher voltage of VBUS and VBAT. When  $V_{VBUS}$  rises above  $V_{VBUS\_UVLO}$ , or  $V_{BAT}$  rises above  $V_{BAT\_UVLO}$ , the sleep comparator and battery depletion comparator are active. I²C interface is ready for communication and all the registers are reset to default value. The host can access all the registers after POR.

## Feature Description (接下页)

### 7.3.2 Device Power Up from Battery without Input Source

If only battery is present, the device consumes up to  $I_{BAT}$  quiescent current. The REGN LDO stays off to minimize the current draw. I<sup>2</sup>C interface is ready for communication as long as  $V_{BAT}$  is above  $V_{BAT\_UVLOZ}$ .

### 7.3.3 Device Power Up from Input Source

When an input source is plugged in, and the EN\_CHG bit is set to 1, the device checks the input source voltage and battery voltage to turn on REGN LDO, all the bias circuits and begin charging. The startup sequence from input source is as listed:

1. Power up REGN LDO
2. Poor source qualification
3. C<sub>FLY</sub> and C<sub>AUX</sub> pre-charging routine
4. Converter Power-up

### 7.3.4 Power Up REGN LDO

The REGN LDO supplies internal bias circuits and power FET gate drivers. The pull-up rail of  $\overline{INT}$  can be connected to REGN as well. The REGN LDO is enabled when all the following conditions are met:

1. VBUS above  $V_{BUS\_UVLOZ}$
2. VBUS above  $V_{BAT} + V_{SLEEPZ}$
3. VBUS below  $V_{VBUS\_OV}$
4.  $V_{BAT}$  above  $V_{BAT\_LOWV}$
5. EN\_CHG bit = 1
6. ICHG  $\neq$  0 A

If one of the above conditions is not met, the device is in high impedance mode (HIZ) with REGN LDO off. The device draws less than  $I_{VBUS\_HIZ}$  from VBUS in this state.

### 7.3.5 Poor Source Qualification

After REGN LDO powers up, the device checks the current capability of the input source. The input source has to meet the following requirements in order to operate the buck converter:

1. VBUS voltage below  $V_{VBUS\_OV}$
2. VBUS voltage above  $V_{POORSRC}$  when pulling  $I_{POORSRC}$  (typical 20 mA)

Once the conditions are met, the status register bit PG\_STAT is set high and the  $\overline{INT}$  pin is pulsed to signal the host. If VBUS\_OV is detected (condition 1 above), the device automatically retries detection once the over-voltage fault goes away. If a poor source is detected (condition 2 above), the device repeats poor source qualification routine every 2 seconds. After 7 consecutive failures, the device sets POORSRC\_STAT, sends an  $\overline{INT}$  pulse to notify the host, goes to HIZ mode and resets EN\_CHG bit. Adapter re-plugin and/or EN\_CHG toggle is required to restart device operation.

### 7.3.6 Converter Power-Up

Prior to converter switching, the flying and auxiliary capacitors, C<sub>FLY</sub>, and C<sub>AUX</sub> are charged to VBUS/2. After the capacitors have been pre-charged, the converter is enabled and the switching FETs Q<sub>HSA</sub> – Q<sub>LSB</sub> start switching. As a battery charger, the device deploys a highly-efficient 750-kHz three-level step-down switching regulator. The fixed frequency oscillator keeps tight control of the switching frequency under all conditions of input voltage, battery voltage, charge current and temperature, simplifying output filter design.

The charge current is soft-started into the desired value by starting from 300 mA and increasing the current up to ICHG programmed value over time. This "soft-start" also applies when increasing the ICHG register value while charging.

## Feature Description (接下页)

### 7.3.7 Three-Level Buck Converter Theory of Operation

The three-level converter is a combination of a switched capacitor and a switched inductor circuit. Assuming the flying capacitor,  $C_{FLY}$ , remains balanced at  $V_{IN}/2$ , the  $V_{SW}$  node can be presented with three different voltages:  $V_{IN}$ ,  $V_{IN}/2$ , and GND. The gate driving scheme is similar to a two-phase buck converter. The outer FETs (QHSA and QLSA) are driven with a complimentary signal with duty cycle  $D = V_{OUT}/V_{IN}$ . The inner FETs (QHSB and QLSB) are driven with a second complimentary signal of equal duty cycle, but phase shifted by  $180^\circ$ . By employing this driving scheme, there is a smooth transition around 50% duty ratio, where the  $V_{SW}$  node moves from presenting GND and  $V_{IN}/2$  to presenting  $V_{IN}$  and  $V_{IN}/2$ .

The three-level can achieve higher efficiency which cannot be easily obtained using traditional buck converter. The high efficiency is due to reduced inductor ripple (volt-seconds), reduced switching loss, and use of a compact inductor with lower DCR. The device integrates low  $R_{DS(ON)}$  FETs to optimize conduction loss. It also integrates control circuit to monitor  $C_{FLY}$  stability and pre-conditioning.

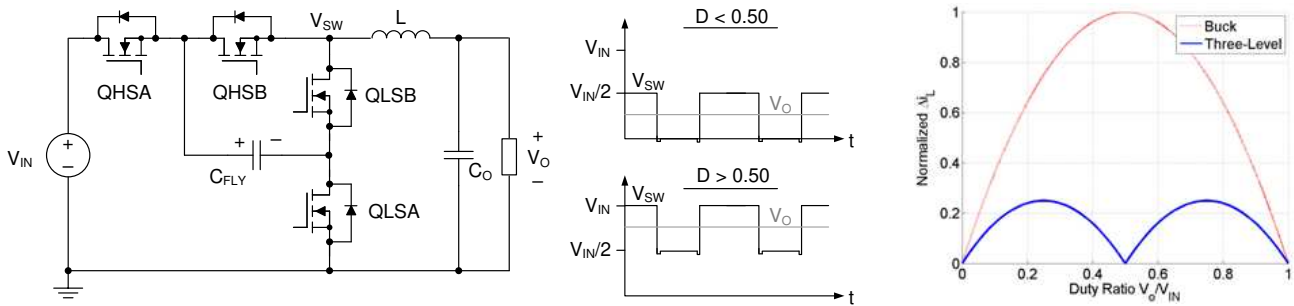


图 14. (a) Three-Level Buck Converter Circuit, (b) Time-Domain  $V_{SW}$  and  $V_O$  Waveforms, and (c) Inductor Current Ripple Comparison Across Duty Ratio

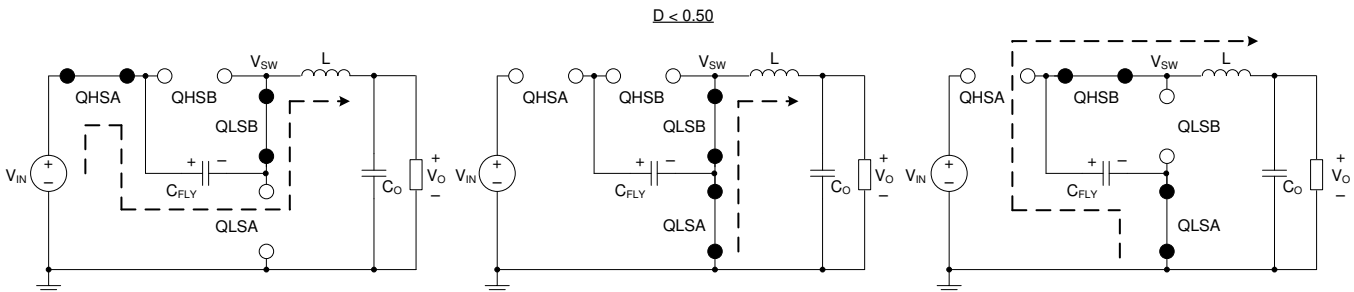


图 15. Three-Level Buck Converter States for Duty Ratios  $< 0.50$

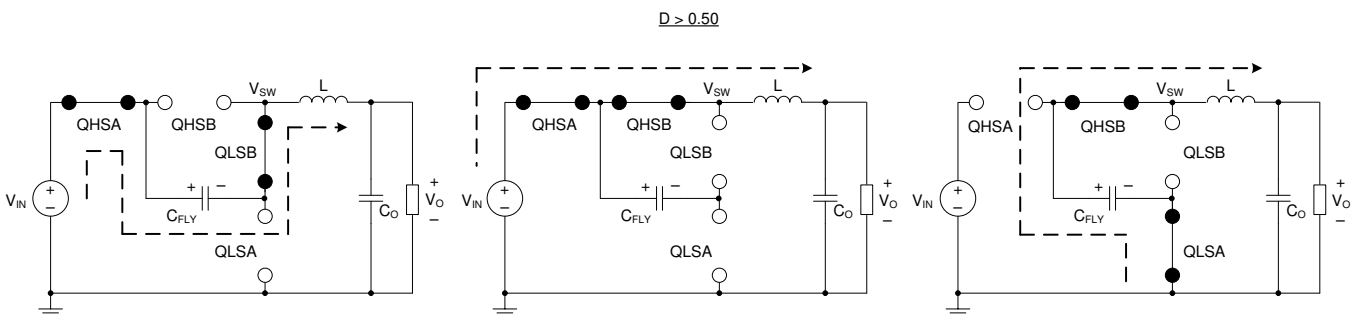


图 16. Three-Level Buck Converter States for Duty Ratios  $> 0.50$

## Feature Description (接下页)

### 7.3.8 Host Mode and Default Mode

#### 7.3.8.1 Host Mode and Default Mode in BQ25910

The BQ25910 is a host controlled charger, and will automatically shut off when the I<sup>2</sup>C watchdog timer is not reset within the timer period. In default (HIZ) mode, the device automatically disables charging until the host writes the EN\_CHG bit high again and resets the watchdog timer via the WD\_RST bit. When the charger is in default mode, WD\_STAT bit is HIGH. When the charger is in host mode, WD\_STAT bit is LOW.

After power-on-reset, the device starts in default mode with watchdog timer expired. All the registers are in the default settings. In default mode, the device remains in HIZ mode and will not charge the battery.

Writing a 1 to the WD\_RST bit forces the charger out of default mode and into host mode. All the device parameters can be programmed by the host. To keep the device in host mode, the host has to reset the watchdog timer by writing 1 to WD\_RST bit before the watchdog timer expires (WD\_STAT bit is set), or disable watchdog timer by setting WATCHDOG bits = 00.

When the watchdog timer is expired (WD\_STAT bit = 1), the device returns to default mode and registers are reset to default values except as detailed in the I<sup>2</sup>C register section. As long as the watchdog timer is expired (WD\_STAT bit = 1), the device remains in Default Mode without charging the battery, regardless of the EN\_CHG bit state. In order to enable charge after watchdog expired, write WD\_RST = 1, and EN\_CHG = 1.

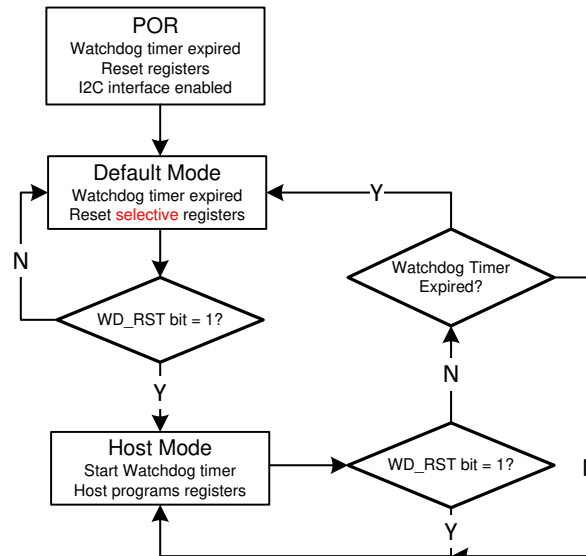


图 17. Watchdog Timer Flow Chart

The REG\_RST bit can be used to reset all of the registers (except STATUS registers) to their default value at any time.

### 7.3.9 Battery Charging Management

The device charges single-cell Li-Ion battery with up to 6-A charge current for high-capacity battery.

#### 7.3.9.1 Autonomous Charging Cycle

When battery charging is enabled (EN\_CHG bit = 1) and the battery is above  $V_{BAT\_LOWV}$ , the device autonomously completes a charging cycle. The device default charging parameters are listed in 表 1. The host can always control the charging operations and optimize the charging parameters by writing to the corresponding registers through I<sup>2</sup>C.

## Feature Description (接下页)

**表 1. Charging Parameter Default Settings**

PARAMETER	VALUE
VBAT to start fast charge (VBATLOWV)	3.5 V
Charging voltage (VREG)	4.350 V
Charging current (ICHG)	3.500 A
Termination current (ITERM)	1.000 A
Safety timer (CHG_TIMER)	12 hours

A new charge cycle starts when the following conditions are valid:

- Converter starts
- Battery charging is enabled by EN\_CHG bit, and ICHG register is not 0 mA
- Battery voltage above  $V_{BAT\_LOWV}$
- No safety timer fault

The charger device automatically terminates the charging cycle when the charging current is below termination threshold, and device not in DPM mode or thermal regulation. Once termination is detected, an  $\overline{INT}$  is asserted to the host and the EN\_CHG bit gets reset to zero. After the charge is done, EN\_CHG bit can initiate a new charging cycle.

Once a charging cycle is complete, an  $\overline{INT}$  pulse is asserted to notify the host. In addition the status register (CHRG\_STAT) indicates the different charging phases (any change in CHRG\_STAT will generate an  $\overline{INT}$  to notify the host):

- 000: Charging disable
- 001: Reserved
- 010: Reserved
- 011: Fast charge (constant current mode)
- 100: Taper charge (constant voltage mode)
- 101: Reserved
- 110: Reserved
- 111: Reserved

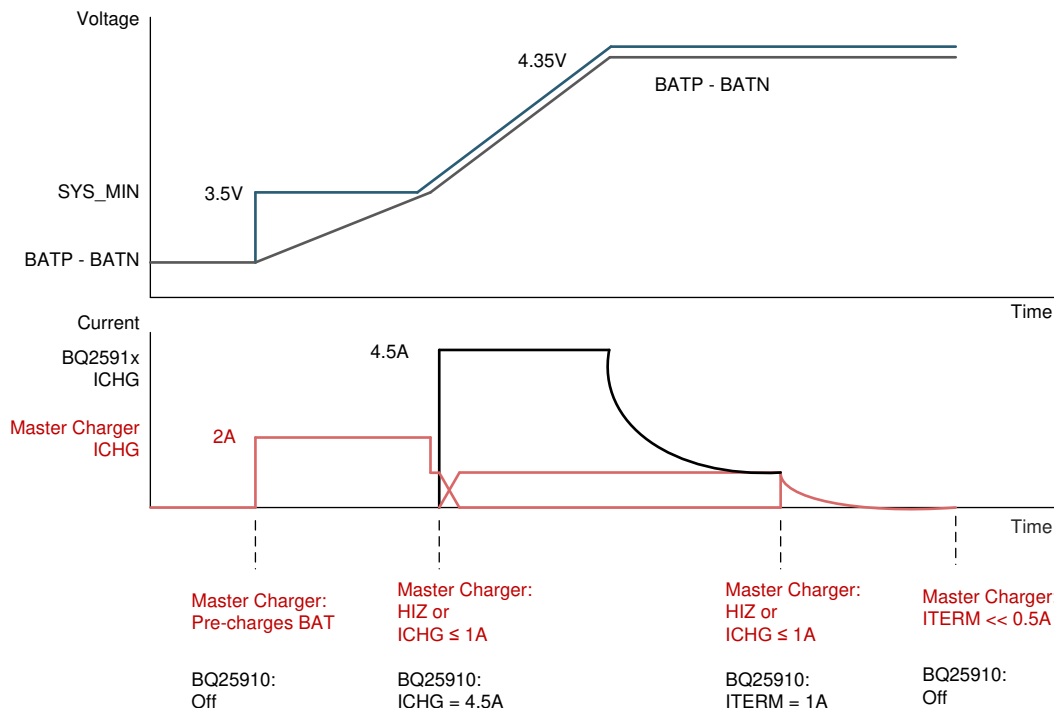
### 7.3.10 Master Charger and Parallel Charger Interactions

A master charger is required in the system to manage pre-charging and full termination of the battery. The BQ25910 monitors the battery voltage and compares it to  $V_{BAT\_LOWV}$  to ensure battery can safely take fast-charge current. Once the BQ25910 turns on and begins fast-charging, the host has two options: disable (HIZ) the master charger, or continue running the master charger along with the parallel charger.

For the first option, once battery voltage reaches  $V_{BAT\_LOWV}$ , the master charger maintains the BATFET on to supply system from battery (EN\_HIZ = 1 on master charger), and the BQ25910 provides both the charge current and system current if required. It is recommended to select  $V_{BAT\_LOWV}$  equal to minimum system voltage in order to maintain system operation during transition. The BQ25910 will then fast-charge the battery up to VREG and continue to regulate voltage while battery current tapers down. After the BQ25910 detects termination, the host can re-enable the master charger to regulate battery voltage in CV mode down to lower termination currents.

The second mode of operation requires both chargers to stay on. In order to maximize efficiency, it is recommended to run the master charger at lower charge current than the BQ25910. For example, the master charger might be set at 1 A and the BQ25910 at 3.5 A to achieve total charge current of 4.5 A. In this mode of operation, the master charger provides mostly system current, while the BQ25910 provides mostly charge current. In this mode of operation, the BQ25910 can select  $V_{BAT\_LOWV}$  as low as the battery dictates for fast-charge, since the master charger can maintain system voltage regulation and ensure system continues to operate through the transition. After the BQ25910 detects termination, the master charger automatically continues to regulate battery voltage in CV mode down to lower termination current.

图 18 shows both options with charge current for each device as well as battery voltage.



**图 18. Master Charger and BQ25910 Handoff**

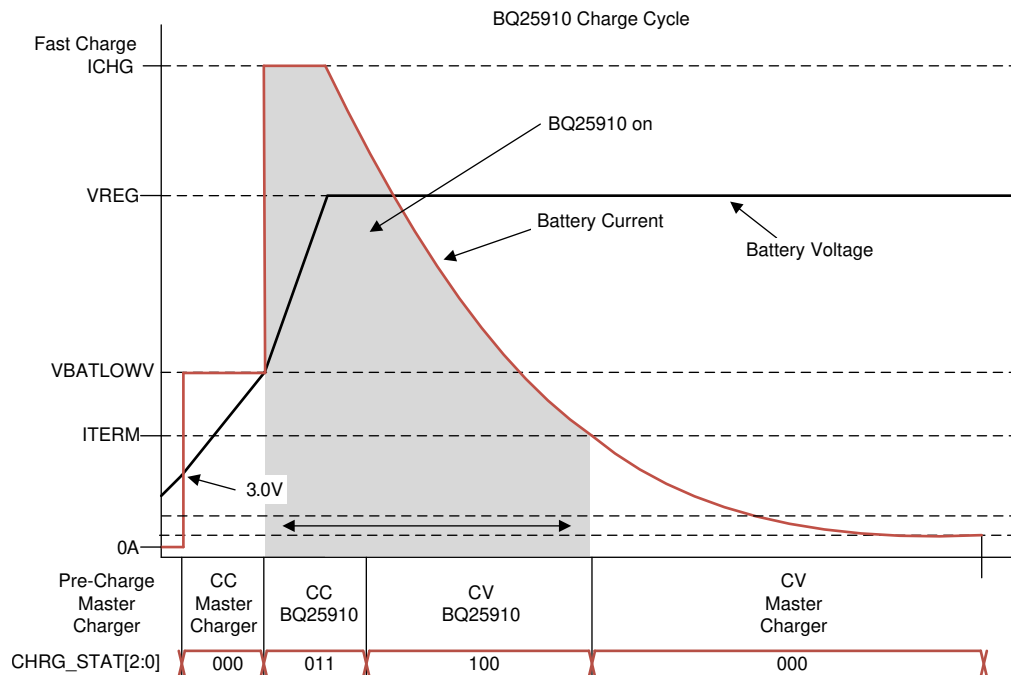
### 7.3.11 Battery Charging Profile

The device charges the battery in two phases: constant current, and constant voltage. At the beginning of a charging cycle, the device checks the battery voltage and regulates current / voltage as needed. If the battery voltage is below  $V_{BAT\_LOWV}$ , it is the master charger responsibility to increase  $V_{BAT}$  up to  $V_{BAT\_LOWV}$  so the parallel charger can initiate fast charging. As  $BAT$  increases to  $V_{BAT\_LOWV}$ , the master charger can stay in HIZ and the BQ25910 can start fast-charging the battery with up-to 6-A  $ICHG$ . Alternatively, the master charger can remain on to maintain the system load from adapter, while the BQ25910 charges the battery. The default charging settings can be found in [表 2](#).

**表 2. Battery Charger Setting**

VBAT	CHARGING CURRENT	REG DEFAULT SETTING	CHRG_STAT
< 2 V	Master controlled (IBATSHORT )	BQ25910 off	000
2 V – $V_{BAT\_LOWV}$	Master controlled (IPRECHG )	BQ25910 off	000
> $V_{BAT\_LOWV}$	ICHG	3.500 A	011
VREG	TAPER down to ITERM	4.350 V	100

If the charger device is in DPM regulation or thermal regulation during charging, the charging current can be less than the programmed value. In this case, termination is temporarily disabled and the charging safety timer is counted at half the clock rate.



**图 19. Battery Charging Profile Highlighting Parallel Charger Region of Operation**

After the device signals charge termination done (CHRG\_TERM\_FLAG = 1), the master charger may choose to continue charging in CV mode or finish the charging cycle completely. The BQ25910 will not start a re-charge cycle automatically, and a toggle on EN\_CHG bit is required to restart a charge cycle.

### 7.3.11.1 Charging Termination

The device terminates a charge cycle when the battery voltage is at VREG, and the current is below termination current (ITERM). After the charging cycle is completed, the converter turns off and enters HIZ mode. At this point, the master charger can continue charging the battery down to a lower termination current, or just provide the system load from the adapter through its buck converter.

When termination occurs, the status register CHRG\_STAT is set to 000, the CHRG\_TERM\_FLAG is set to 1, and an INT pulse is asserted to the host. The CHRG\_TERM\_FLAG should be used to determine if termination was detected. Termination is temporarily disabled when the charger device is in input current, input voltage or thermal regulation.

Termination can be disabled by writing 0 to EN\_TERM bit prior to charge termination. In this case, the device will continue regulating the battery voltage to VREG value until the safety timer runs out or until the EN\_CHG bit is cleared.

### 7.3.11.2 Differential Battery Voltage Remote Sensing

For high current charging systems, resistance between the charger output and battery cell terminal such as board routing, connector, MOSFETs and sense resistor can force the charging process to move from constant current to constant voltage too early, thereby increasing charge time. To speed up the charging cycle, the device provides differential remote sensing terminals for battery positive and negative terminals, which can extend the constant current charge time to deliver maximum power to the battery.

The device regulates  $BATP - BATN = V_{BAT}$  to the programmed VREG voltage. By connecting the sense terminals as close to the battery as possible, the charger can deliver maximum charging power to battery. The kelvin connections to the battery can be made via a 100-Ω resistor.

### 7.3.11.3 Charging Safety Timer

The device has built-in safety timer to prevent extended charging cycle due to abnormal battery conditions. The user can program fast charge safety timer through I<sup>2</sup>C (CHG\_TIMER bits). When safety timer expires, the TMR\_FLAG bit is set to 1, and an INT pulse is asserted to the host. The safety timer feature can be disabled via I<sup>2</sup>C using EN\_TIMER bit.

During input voltage, current or thermal regulation, the safety timer counts at half clock rate as the actual charge current is likely to be below the register setting. For example, if the charger is in input current regulation (IINDPM\_STAT = 1) throughout the whole charging cycle, and the safety timer is set to 5 hours, then the timer will expire in 10 hours. This half clock rate feature can be disabled by setting TMR2X\_EN = 0. Changing the TMR2X\_EN bit while the device is running has no effect on the safety timer count, other than forcing the timer to count at half the rate under the conditions dictated above.

## 7.4 Device Functional Modes

### 7.4.1 Lossless Current Sensing

In high current charging systems, extra resistance between the charger output and the battery contribute to power loss and temperature rise. The BQ25910 regulates the output current without the need of a sense resistor, thereby reducing system power loss and operating temperature. Switching FET current information is used in conjunction to inductor DCR sensing to regulate output current accurately. For optimal operation, the voltage drop across the DCR should be below 180 mV. For example, to achieve 6-A charging, the DCR should be below 30 mΩ. In addition to lossless current regulation, the switching FET current is monitored on a cycle-by-cycle basis to ensure safe operation.

### 7.4.2 Dynamic Power Management

To meet maximum current limit in USB spec and avoid over-loading the adapter, the device features Dynamic Power Management (DPM), which continuously monitors the input current and input voltage. When input source is over-loaded, either the current exceeds the input current limit (IINDPM) or the voltage falls below the input voltage limit (VINDPM). The device then reduces the charge current until the input current falls below the input current limit and the input voltage rises above the input voltage limit.

During DPM mode, the status register bits VINDPM\_STAT (VINDPM) and/or IINDPM\_STAT (IINDPM) is/are set to 1. [Figure 20](#) shows the IINDPM response with 9-V/1.33-A (12-W) adapter, 4.0-V battery, 3.5-A charge current, and BQ25910 in CV mode.

## Device Functional Modes (接下页)

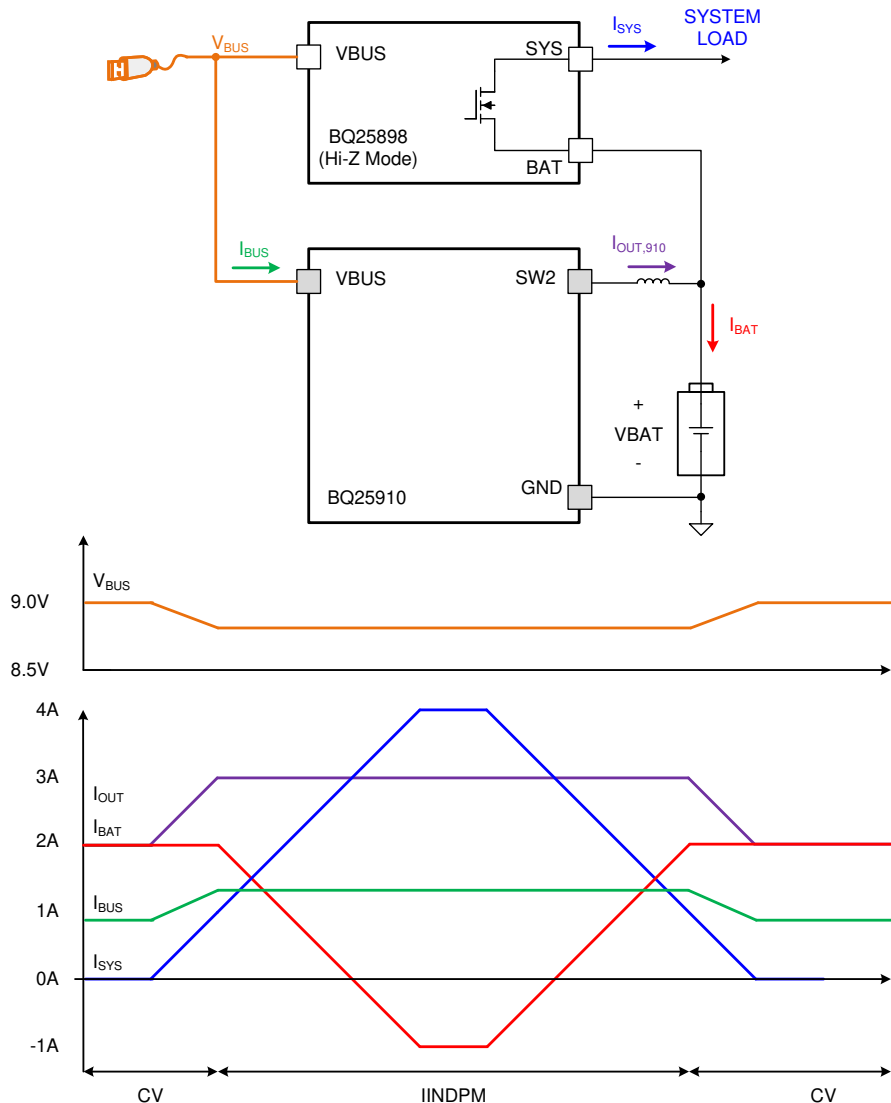


图 20. DPM Response

### 7.4.3 Interrupt to Host ( $\overline{\text{INT}}$ )

In some applications, the host does not always monitor the charger operation. The  $\overline{\text{INT}}$  pin notifies the system host on the device operation. By default, the following events will generate an active-low, 256- $\mu\text{s}$   $\overline{\text{INT}}$  pulse.

- Good input source detected (three conditions below met)
  - $V_{\text{VBUS}} > V_{\text{BAT}}$  (not in sleep)
  - $V_{\text{VBUS}} < V_{\text{VBUS\_OV}}$
  - $V_{\text{VBUS}} > V_{\text{POORSRC}}$  (typ 3.7 V) when  $I_{\text{POORSRC}}$  (typ 20 mA) current is applied (not a poor source)
- Good input source removed
- POORSRC routine failed 7 consecutive times (connected adaptor was found to be a poor source)
- Capacitor pre-charge routine failed (CFLY / CAUX failed to pre-charge)
- Entering IINDPM regulation
- Entering VINDPM regulation
- Entering device Junction Temperature Regulation

## Device Functional Modes (接下页)

8. I<sup>2</sup>C Watchdog timer expired
  - At initial power-up, this  $\overline{\text{INT}}$  gets asserted to signal I<sup>2</sup>C is ready for communication
9. Charger changes state (CHRG\_STAT value change)
10. VBUS over-voltage detected
11. Junction temperature shutdown (TSHUT)
12. Battery over-voltage detected (BATOVP)
13. CFLY fault detected
14. Charge Safety Timer Expired

Each one of these  $\overline{\text{INT}}$  sources can be masked off to prevent  $\overline{\text{INT}}$  pulses from being sent out when they occur. Three bits exist for each one of these events:

- The STAT bit holds the current status of each  $\overline{\text{INT}}$  source
- The FLAG bit holds information on which source produced an  $\overline{\text{INT}}$ , regardless of current status.
- The MASK bit is used to prevent the device from sending out  $\overline{\text{INT}}$  for each particular event.

When one of the above conditions occurs, the device sends out an  $\overline{\text{INT}}$  pulse and keeps track of which source generated the  $\overline{\text{INT}}$  via the FLAG registers. The FLAG register bits are automatically reset to zero after the host reads them, and a new edge on STAT bit is required to re-assert the FLAG.

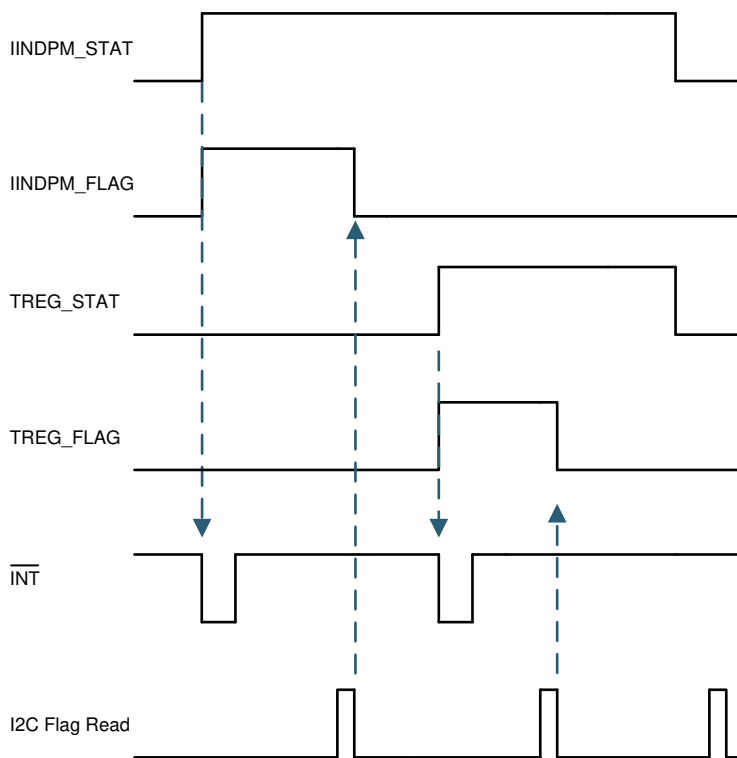


图 21.  $\overline{\text{INT}}$  Generation Behavior Example

## 7.4.4 Protections

### 7.4.4.1 Voltage and Current Monitoring

The device closely monitors the input and output voltage, as well as switching FET currents for safe buck mode operation.

## Device Functional Modes (接下页)

### 7.4.4.1.1 Input Over-Voltage ( $V_{VBUS\_OV}$ )

The valid input voltage range for buck mode operation is  $V_{VBUS\_OP}$ . If VBUS voltage exceeds  $V_{VBUS\_OV}$ , the device stops switching immediately to protect the power FETs. During input over-voltage, an INT pulse is asserted to signal the host, and the VBUS\_OVP\_STAT and VBUS\_OVP\_FLAG fault register bits get set. The device automatically starts switching again when the over-voltage condition goes away.

### 7.4.4.1.2 Input Under-Voltage ( $V_{POOR\_SRC}$ )

The valid input voltage range for buck mode operation is  $V_{VBUS\_OP}$ . If VBUS voltage falls below  $V_{POOR\_SRC}$ , the device stops switching. During input under-voltage, an INT pulse is asserted to signal the host, and the PG\_STAT bit gets cleared. The PG\_FLAG bit will get set to signal this event. The device automatically attempts to restart switching when the under-voltage condition goes away.

### 7.4.4.1.3 Flying Capacitor Over- or Under-Voltage Protection ( $V_{CFLY\_OVP}$ and $V_{CFLY\_UVP}$ )

Under normal operating conditions the flying capacitor is balanced by the converter. However, during line transients or other failures, capacitor mis-balance is possible. The device constantly monitors the flying capacitor voltage. If VCFLY exceeds the protection limits, the device stops switching immediately. When this fault is detected, an INT pulse is asserted to notify the host, and the CFLY\_STAT and CFLY\_FLAG fault register bits get set. The device automatically attempts to re-balance the cap and resumes charging if successful. If the device fails to re-balance CFLY, the CAP\_COND\_STAT and CAP\_COND\_FLAG fault register bits get set, and an EN\_CHG toggle is required to re-attempt charging.

### 7.4.4.1.4 Over Current Protection

The device monitors the outer switching FET current on a cycle-by-cycle basis. If an over-current is detected, the device responds by forcing the switching FETs to immediately discharge the inductor current and attempt current ramp-up once again.

### 7.4.4.2 Thermal Regulation and Thermal Shutdown

The device monitors internal junction temperature  $T_J$  to avoid overheating the chip and limits the device surface temperature in buck mode. When the internal junction temperature exceeds the preset thermal regulation limit (TREG bits), the device reduces charge current. A wide thermal regulation range from 60°C to 120°C allows the user to optimize the system thermal performance.

During thermal regulation, the actual charging current is usually below the programmed value in ICHG registers. Therefore, termination is disabled, the safety timer runs at half the clock rate, the status register TREG\_STAT bit goes high, and an INT is asserted to the host.

Additionally, the device has thermal shutdown to turn off the converter when device surface temperature exceeds  $T_{SHUT}$ . The fault register TSHUT\_STAT is set and an INT pulse is asserted to the host. The converter turns back on when device temperature is below  $T_{SHUT\_HYS}$ .

### 7.4.4.3 Battery Protection

#### 7.4.4.3.1 Battery Over-Voltage Protection (BATOVP)

The battery over-voltage limit is clamped at 4% above the battery regulation voltage. When battery over-voltage occurs, the charger device immediately disables charge. The fault register BATOVP\_STAT bit goes high and an INT pulse is asserted to signal the host.

## 7.5 Programming

### 7.5.1 Serial Interface

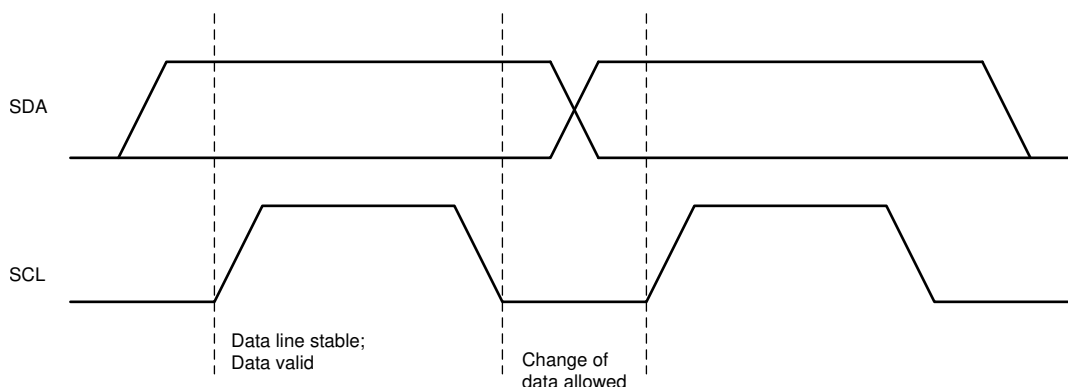
The device uses I<sup>2</sup>C compatible interface for flexible charging parameter programming and instantaneous device status reporting. I<sup>2</sup>C is a bi-directional 2-wire serial interface. Only two open-drain bus lines are required: a serial data line (SDA), and a serial clock line (SCL). Devices can be considered as masters or slaves when performing data transfers. A master is a device which initiates a data transfer on the bus and generates the clock signals to permit that transfer. At that time, any device addressed is considered a slave.

## Programming (接下页)

The device operates as a slave device with address 4BH, receiving control inputs from the master device like micro-controller or digital signal processor through REG00-REG0D. Register read beyond REG0D (0x0D) returns 0xFF. The I<sup>2</sup>C interface supports both standard mode (up to 100 kbits/s), and fast mode (up to 400 kbits/s). When the bus is free, both lines are HIGH. The SDA and SCL pins are open drain and must be connected to the positive supply voltage via a current source or pull-up resistor.

### 7.5.2 Data Validity

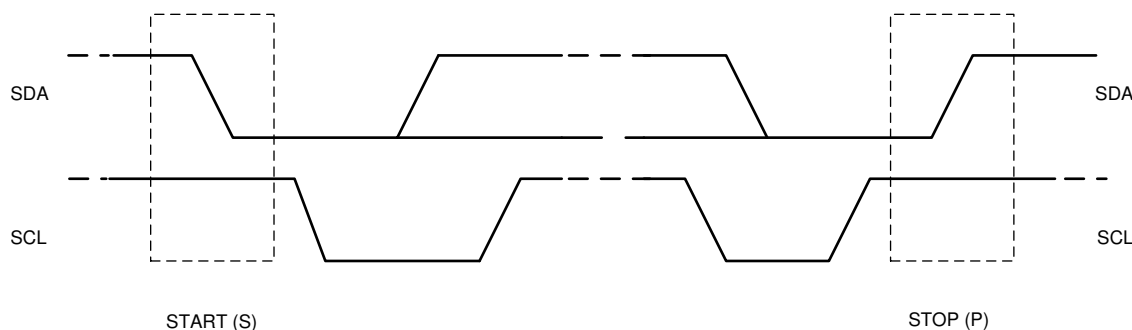
The data on the SDA line must be stable during the HIGH period of the clock. The HIGH or LOW state of the data line can only change when the clock signal on SCL line is LOW. One clock pulse is generated for each data bit transferred.



## 图 22. Bit Transfers on the I<sup>2</sup>C Bus

### 7.5.3 START and STOP Conditions

All transactions begin with a START (S) and are terminated with a STOP (P). A HIGH to LOW transition on the SDA line while SCL is HIGH defines a START condition. A LOW to HIGH transition on the SDA line when the SCL is HIGH defines a STOP condition. START and STOP conditions are always generated by the master. The bus is considered busy after the START condition, and free after the STOP condition.



### 图 23. START and STOP Conditions on the I<sup>2</sup>C Bus

### 7.5.4 Byte Format

Every byte on the SDA line must be 8 bits long. The number of bytes to be transmitted per transfer is unrestricted. Each byte has to be followed by an ACKNOWLEDGE (ACK) bit. Data is transferred with the Most Significant Bit (MSB) first. If a slave cannot receive or transmit another complete byte of data until it has performed some other function, it can hold the SCL line low to force the master into a wait state (clock stretching). Data transfer then continues when the slave is ready for another byte of data and releases the SCL line.

## Programming (接下页)

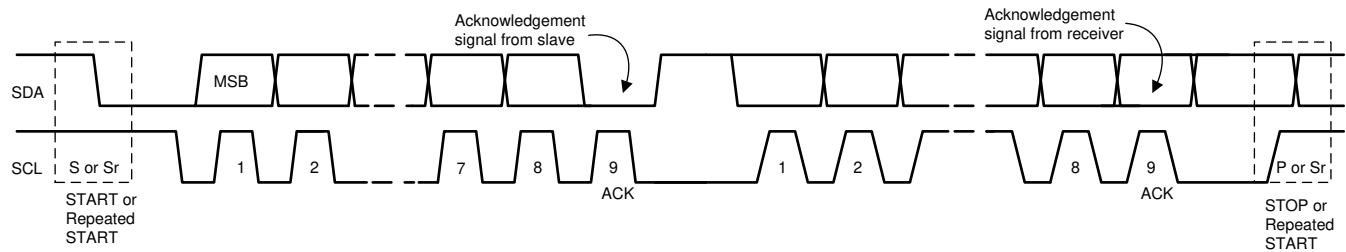


图 24. Data Transfer on the I<sup>2</sup>C Bus

### 7.5.5 Acknowledge (ACK) and Not Acknowledge (NACK)

The ACK signaling takes place after byte. The ACK bit allows the receiver to signal the transmitter that the byte was successfully received and another byte may be sent. All clock pulses, including the acknowledge 9th clock pulse, are generated by the master. The transmitter releases the SDA line during the acknowledge clock pulse so the receiver can pull the SDA line LOW and it remains stable LOW during the HIGH period of this 9th clock pulse. A NACK is signaled when the SDA line remains HIGH during the 9th clock pulse. The master can then generate either a STOP to abort the transfer or a repeated START to start a new transfer.

### 7.5.6 Slave Address and Data Direction Bit

After the START signal, a slave address is sent. This address is 7 bits long, followed by the 8 bit as a data direction bit (bit R/W). A zero indicates a transmission (WRITE) and a one indicates a request for data (READ). The device 7-bit address is defined as 1001 011' (0x4BH) by default. The address bit arrangement for 4BH is shown in 图 25.

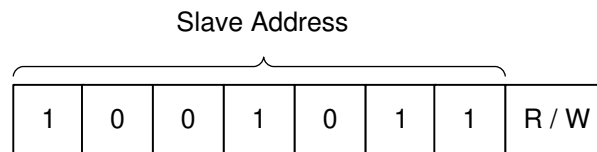


图 25. 14: 7-Bit Addressing (4BH)

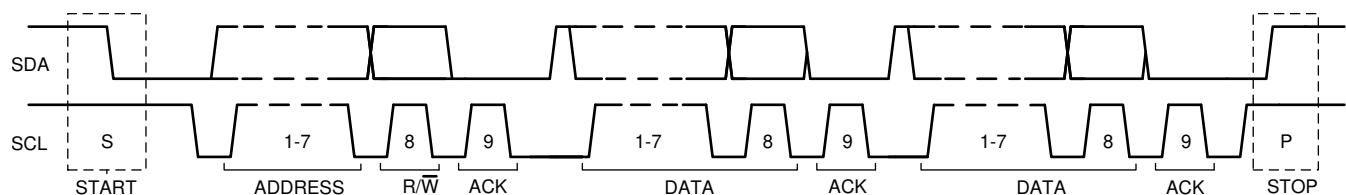


图 26. Complete Data Transfer on I<sup>2</sup>C Bus

### 7.5.7 Single Read and Write



图 27. Single Write

## Programming (接下页)

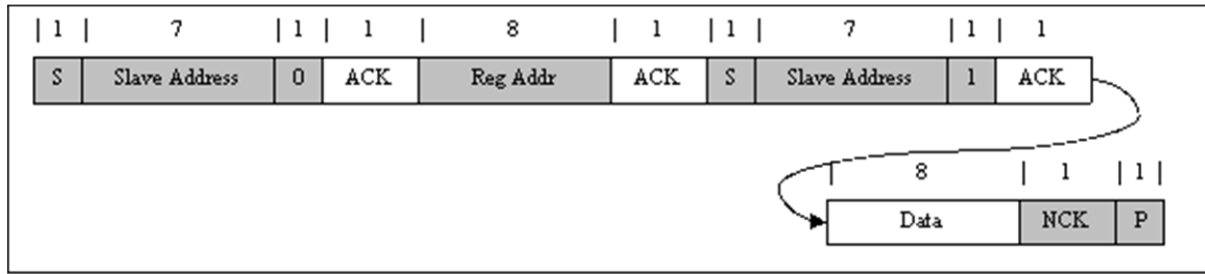


图 28. Single Read

If the register address is not defined, the charger device sends back NACK and returns to the idle state.

### 7.5.8 Multi-Read and Multi-Write

The charger device supports multi-read and multi-write of all registers.

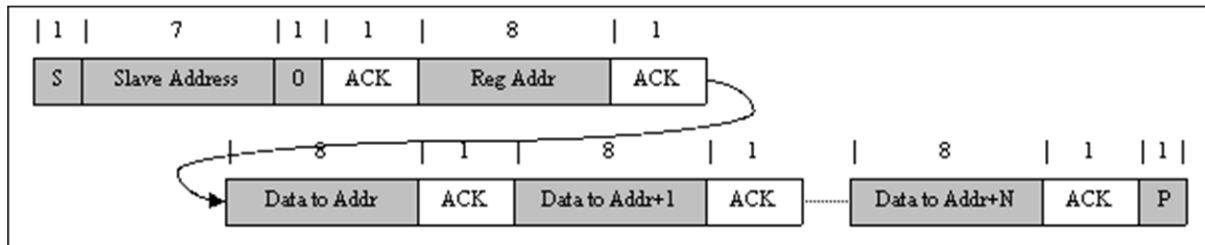


图 29. Multi-Write

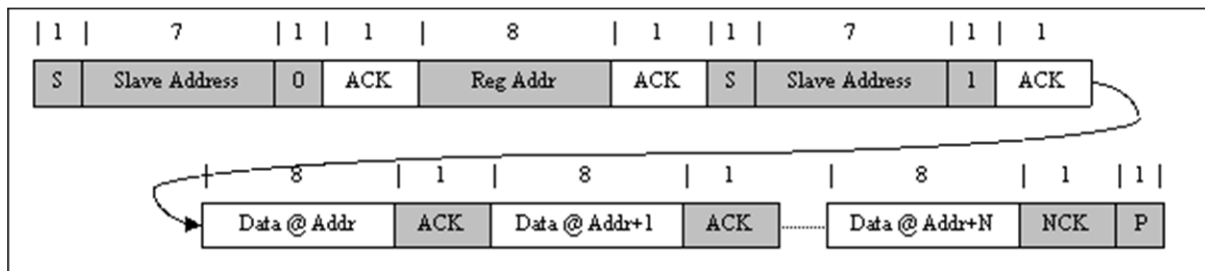


图 30. Multi-Read

## 7.6 Register Maps

### 7.6.1 I<sup>2</sup>C Registers

Table 3 lists the memory-mapped registers for the I<sup>2</sup>C. All register offset addresses not listed in Table 3 should be considered as reserved locations and the register contents should not be modified.

**Table 3. I<sup>2</sup>C Register Summary Table**

Address	Access Type	Acronym	Register Name	Section
0h	R/W	REG00	Battery Voltage Limit	<a href="#">Go</a>
1h	R/W	REG01	Charge Current Limit	<a href="#">Go</a>
2h	R/W	REG02	Input Voltage Limit	<a href="#">Go</a>
3h	R/W	REG03	Input Current Limit	<a href="#">Go</a>
4h	R/W	REG04	RESERVED	<a href="#">Go</a>
5h	R/W	REG05	Charger Control 1	<a href="#">Go</a>
6h	R/W	REG06	Charger Control 2	<a href="#">Go</a>
7h	R	REG07	INT Status	<a href="#">Go</a>
8h	R	REG08	FAULT Status	<a href="#">Go</a>
9h	R	REG09	INT Flag	<a href="#">Go</a>
Ah	R	REG0A	FAULT Flag	<a href="#">Go</a>
Bh	R/W	REG0h	INT Mask	<a href="#">Go</a>
Ch	R/W	REG0C	FAULT Mask	<a href="#">Go</a>
Dh	R/W	REG0D	Part Information	<a href="#">Go</a>

Complex bit access types are encoded to fit into small table cells. Table 4 shows the codes that are used for access types in this section.

**Table 4. I<sup>2</sup>C Access Type Codes**

Access Type	Code	Description
<b>Read Type</b>		
R	R	Read
<b>Write Type</b>		
W	W	Write
<b>Reset Value</b>		
-n		Value after reset
-X		Undefined value

### 7.6.1.1 Battery Voltage Regulation Limit Register (Address = 0h) [reset = AAh]

REG00 is shown in [Figure 31](#) and described in [Table 5](#).

Return to [Summary Table](#).

**Figure 31. REG00 Register**

7	6	5	4	3	2	1	0
VREG[7:0]							
R/W-AAh							

**Table 5. REG00 Register Field Descriptions**

Bit	Field	Type	Reset by REG_RST	Reset by WATCHDOG	Description
7	VREG[7]	R/W	Yes	Yes	640 mV
6	VREG[6]	R/W	Yes	Yes	320 mV
5	VREG[5]	R/W	Yes	Yes	160 mV
4	VREG[4]	R/W	Yes	Yes	80 mV
3	VREG[3]	R/W	Yes	Yes	40 mV
2	VREG[2]	R/W	Yes	Yes	20 mV
1	VREG[1]	R/W	Yes	Yes	10 mV
0	VREG[0]	R/W	Yes	Yes	5 mV

Charge voltage limit:  
Offset: 3.5 V  
Range: 3.5 V to 4.775 V  
Default 4.35 V

### 7.6.1.2 Charger Current Limit Register (Address = 1h) [reset = 46h]

REG01 is shown in [Figure 32](#) and described in [Table 6](#).

Return to [Summary Table](#).

**Figure 32. REG01 Register**

7	6	5	4	3	2	1	0
RESERVED	ICHG[6:0]						
R/W-0h	R/W-46h						

**Table 6. REG01 Register Field Descriptions**

Bit	Field	Type	Reset by REG_RST	Reset by WATCHDOG	Description
7	RESERVED	R/W	Yes	Yes	Reserved bit always reads 0h
6	ICHG[6]	R/W	Yes	Yes	3200 mA
5	ICHG[5]	R/W	Yes	Yes	1600 mA
4	ICHG[4]	R/W	Yes	Yes	800 mA
3	ICHG[3]	R/W	Yes	Yes	400 mA
2	ICHG[2]	R/W	Yes	Yes	200 mA
1	ICHG[1]	R/W	Yes	Yes	100 mA
0	ICHG[0]	R/W	Yes	Yes	50 mA

Fast charge current limit  
Offset: 0 mA  
Range: 0 mA to 6000 mA  
Default: 3500 mA  
NOTE: ICHG > 6 A (78h) clamped to 6 A  
ICHG < 300 mA (06h) clamped to 0 A

### 7.6.1.3 Input Voltage Limit Register (Address = 2h) [reset = 04h]

REG02 is shown in [Figure 33](#) and described in [Table 7](#).

Return to [Summary Table](#).

**Figure 33. REG02 Register**

7	6	5	4	3	2	1	0
RESERVED	VINDPM[6:0]						
R/W-0h	R/W-04h						

**Table 7. REG02 Register Field Descriptions**

Bit	Field	Type	Reset by REG_RST	Reset by WATCHDOG	Description
7	RESERVED	R/W	Yes	No	Reserved bit always reads 0h
6	VINDPM[6]	R/W	Yes	No	6400 mV
5	VINDPM[5]	R/W	Yes	No	3200 mV
4	VINDPM[4]	R/W	Yes	No	1600 mV
3	VINDPM[3]	R/W	Yes	No	800 mV
2	VINDPM[2]	R/W	Yes	No	400 mV
1	VINDPM[1]	R/W	Yes	No	200 mV
0	VINDPM[0]	R/W	Yes	No	100 mV

Absolute input-voltage limit  
Offset: 3.9 V  
Range: 3.9 V to 14 V  
Default: 4.3 V  
NOTE: VINDPM > 14 V (65h) clamped to 14 V

### 7.6.1.4 Input Current Limit Register (Address = 3h) [reset = 13h]

REG03 is shown in [Figure 34](#) and described in [Table 8](#).

Return to [Summary Table](#).

**Figure 34. REG03 Register**

7	6	5	4	3	2	1	0
RESERVED		INDPM[5:0]					
R/W-0h		R/W-13h					

**Table 8. REG03 Register Field Descriptions**

Bit	Field	Type	Reset by REG_RST	Reset by WATCHDOG	Description
7-6	RESERVED	R/W	Yes	No	Reserved bit always reads 0h
5	INDPM[5]	R/W	Yes	No	3200 mA
4	INDPM[4]	R/W	Yes	No	1600 mA
3	INDPM[3]	R/W	Yes	No	800 mA
2	INDPM[2]	R/W	Yes	No	400 mA
1	INDPM[1]	R/W	Yes	No	200 mA
0	INDPM[0]	R/W	Yes	No	100 mA

Input current limit  
Offset: 500 mA  
Range: 500 mA to 3600 mA  
Default: 2400 mA  
NOTE: INDPM > 3600 mA (1Fh) clamped to 3600mA

### 7.6.1.5 Reserved Register (Address = 4h) [reset = 03h]

REG04 is shown in [Figure 35](#) and described in [Table 9](#).

Return to [Summary Table](#).

**Figure 35. REG04 Register**

7	6	5	4	3	2	1	0
RESERVED							
R/W-0h				R/W-3h			

**Table 9. REG04 Register Field Descriptions**

Bit	Field	Type	Reset by REG_RST	Reset by WATCHDOG	Description
7-0	RESERVED	R/W	Yes	Yes	Reserved bit always reads 03h

### 7.6.1.6 Charger Control 1 Register (Address = 5h) [reset = 9Dh]

REG05 is shown in [Figure 36](#) and described in [Table 10](#).

Return to [Summary Table](#).

When the WATCHDOG[1:0] bits change (writing the same value does not change these bits), the internal counter is reset. The same applies for the CHG\_TIMER bits (changing the value in the register will reset the CHG\_TIMER).

**Figure 36. REG05 Register**

7	6	5	4	3	2	1	0
EN_TERM	WD_RST	WATCHDOG[1:0]		EN_TIMER	CHG_TIMER[1:0]		TMR2X_EN
R/W-1h	R/W-0h	R/W-1h		R/W-1h	R/W-2h		R/W-1h

**Table 10. REG05 Register Field Descriptions**

Bit	Field	Type	Reset by REG_RST	Reset by WATCHDOG	Description
7	EN_TERM	R/W	Yes	Yes	Termination control 0h = Disable termination 1h = Enable termination
6	WD_RST	R/W	Yes	Yes	I <sup>2</sup> C watchdog-timer reset 0h = Normal 1h = Reset (bit returns to 0 after time reset)
5-4	WATCHDOG[1:0]	R/W	Yes	Yes	I <sup>2</sup> C watchdog-timer settings 0h = Disable watchdog timer 1h = 40 s 2h = 80 s 3h = 160 s
3	EN_TIMER	R/W	Yes	Yes	Charging safety-timer enable 0h = Disable 1h = Enable
2-1	CHG_TIMER[1:0]	R/W	Yes	Yes	Fast-charge safety timer setting 0h = 5 hours 1h = 8 hours 2h = 12 hours 3h = 20 hours
0	TMR2X_EN	R/W	Yes	Yes	Safety timer behavior during DPM or TREG 0h = Safety timer always counts normally 1h = Safety timer count slowed by 2x during input DPM or TREG

### 7.6.1.7 Charger Control 2 Register (Address = 6h) [reset = 33h]

REG06 is shown in [Figure 37](#) and described in [Table 11](#).

Return to [Summary Table](#).

When the watchdog timer expires (WD\_STAT = 1h), the EN\_CHG bit is held in reset. To enable the charger after the watchdog expires, write a value of 1h to the WD\_RST bit and a value of 1h to the EN\_CHG bit.

**Figure 37. REG06 Register**

7	6	5	4	3	2	1	0
RESERVED		TREG[1:0]		EN_CHG	RESERVED	VBATLOWV[1:0]	
R/W-0h		R/W-3h		R/W-0h	R/W-0h	R/W-3h	

**Table 11. REG06 Register Field Descriptions**

Bit	Field	Type	Reset by REG_RST	Reset by WATCHDOG	Description
7-6	RESERVED	R/W	Yes	Yes	Reserved bit always reads 0h
5-4	TREG[1:0]	R/W	Yes	Yes	Thermal regulation threshold 0h = 60°C 1h = 80°C 2h = 100°C 3h = 120°C
3	EN_CHG	R/W	Yes	Yes	Charger enable configuration 0h = Charger disabled 1h = Charger enabled
2	RESERVED	R/W	Yes	Yes	Reserved bit always reads 0h
1-0	VBATLOWV[1:0]	R/W	Yes	No	V <sub>BAT_LOWV</sub> threshold to start charging at ICHG programmed setting: 0h = 2.6 V 1h = 2.9 V 2h = 3.2 V 3h = 3.5 V

### 7.6.1.8 INT Status Register (Address = 7h) [reset = X]

REG07 is shown in [Figure 38](#) and described in [Table 12](#).

Return to [Summary Table](#).

**Figure 38. REG07 Register**

7	6	5	4	3	2	1	0
PG_STAT	INDPM_STAT	VINDPM_STAT	TREG_STAT	WD_STAT	CHRG_STAT[2:0]		
R-X	R-X	R-X	R-X	R-X	R-X		

**Table 12. REG07 Register Field Descriptions**

Bit	Field	Type	Reset by REG_RST	Reset by WATCHDOG	Description
7	PG_STAT	R	Yes	Yes	Power-good status 0h = Not power good 1h = Power good
6	INDPM_STAT	R	Yes	Yes	INDPM status 0h = Normal 1h = In INDPM regulation
5	VINDPM_STAT	R	Yes	Yes	VINDPM status 0h = Normal 1h = In VINDPM regulation
4	TREG_STAT	R	Yes	Yes	Device thermal-regulation status 0h = Normal 1h = In thermal regulation
3	WD_STAT	R	Yes	No	I <sup>2</sup> C watchdog-timer status 0h = Normal 1h = Watchdog timer expired
2-0	CHRG_STAT[2:0]	R	Yes	Yes	Charge status 0h = Not charging 1h = Reserved 2h = Reserved 3h = Fast charging (CC mode) 4h = Taper charging (CV mode) 5h = Reserved 6h = Reserved 7h = Reserved

### 7.6.1.9 FAULT Status Register (Address = 8h) [reset = X]

REG08 is shown in [Figure 39](#) and described in [Table 13](#).

Return to [Summary Table](#).

When the watchdog timer expires (WD\_STAT = 1h), the VBUS\_OVP\_STAT, TSHUT\_STAT, BATOVP\_STAT, and CFLY\_STAT bits are held in reset until the watchdog fault is cleared (WD\_RST bit = 1h, or changing the WATCHDOG[1:0] bits).

**Figure 39. REG08 Register**

7	6	5	4	3	2	1	0
VBUS_OVP_STAT	TSHUT_STAT	BATOVP_STAT	CFLY_STAT	RESERVED	CAP_COND_STAT	POORSRC_STAT	RESERVED
R-X	R-X	R-X	R-X	R-0h	R-X	R-X	R-0h

**Table 13. REG08 Register Field Descriptions**

Bit	Field	Type	Reset by REG_RST	Reset by WATCHDOG	Description
7	VBUS_OVP_STAT	R	Yes	Yes	Input-overvoltage status 0h = Normal 1h = Device in overvoltage protection
6	TSHUT_STAT	R	Yes	Yes	Device temperature-shutdown status 0h = Normal 1h = Device in thermal-shutdown protection
5	BATOVP_STAT	R	Yes	Yes	Battery overvoltage status 0h = Normal 1h = BATOVP (VBAT > VBATOVP)
4	CFLY_STAT	R	Yes	Yes	Flying capacitor status 0h = Normal 1h = Flying capacitor fault (VCFLY_UVP or OVP)
3	Reserved	R	Yes	Yes	Reserved bit always reads 0
2	CAP_COND_STAT	R	Yes	Yes	Capacitor precondition status 0h = Normal 1h = CFLY or CAUX precondition failed
1	POORSRC_STAT	R	Yes	Yes	Poor-source-detection status 0h = Normal 1h = POORSRC routine failed 7 consecutive times
0	RESERVED	R	Yes	Yes	Reserved bit always reads 0

### 7.6.1.10 INT Flag Status Register (Address = 9h) [reset = 00h]

REG09 is shown in [Figure 40](#) and described in [Table 14](#).

Return to [Summary Table](#).

All bits in REG09 are automatically cleared after a read.

**Figure 40. REG09 Register**

7	6	5	4	3	2	1	0
PG_FLAG	INDPM_FLAG	VINDPM_FLAG	TREG_FLAG	WD_FLAG	CHRG_TERM_FL AG	RESERVED	CHRG_FLAG
R-0h	R-0h	R-0h	R-0h	R-0h	R-0h	R-0h	R-0h

**Table 14. REG09 Register Field Descriptions**

Bit	Field	Type	Reset by REG_RST	Reset by WATCHDOG	Description
7	PG_FLAG	R	Yes	No	Power-good INT flag 0h = Normal 1h = PG-signal toggle detected
6	INDPM_FLAG	R	Yes	No	INDPM-regulation INT flag 0h = Normal 1h = INDPM-signal rising edge detected
5	VINDPM_FLAG	R	Yes	No	VINDPM-regulation INT flag 0h = Normal 1h = VINDPM-signal rising edge detected
4	TREG_FLAG	R	Yes	No	Device temperature-regulation INT flag 0h = Normal 1h = TREG-signal rising edge detected
3	WD_FLAG	R	Yes	No	I <sup>2</sup> C-watchdog INT flag 0h = Normal 1h = WD_STAT-signal rising edge detected
2	CHRG_TERM_FLAG	R	Yes	No	Charger-termination INT flag 0h = Normal 1h = Charger-termination signal rising edge detected
1	RESERVED	R	Yes	No	Reserved bit always reads 0
0	CHRG_FLAG	R	Yes	No	Charger status INT flag 0h = Normal 1h = CHRG_STAT[2:0] bits changed (transition to any state)

### 7.6.1.11 FAULT Flag Register (Address = Ah) [reset = 00h]

REG0A is shown in [Figure 41](#) and described in [Table 15](#).

Return to [Summary Table](#).

All bits in REG0A are automatically cleared after a read.

**Figure 41. REG0A Register**

7	6	5	4	3	2	1	0
VBUS_OVP_FLAG	TSHUT_FLAG	BATOV_P_FLAG	CFLY_FLAG	TMR_FLAG	CAP_COND_FLAG	POORSRC_FLAG	RESERVED
R-0h	R-0h	R-0h	R-0h	R-0h	R-0h	R-0h	R-0h

**Table 15. REG0A Register Field Descriptions**

Bit	Field	Type	Reset by REG_RST	Reset by WATCHDOG	Description
7	VBUS_OVP_FLAG	R	Yes	No	Input-overvoltage INT flag 0h = Normal 1h = VBUS_OVP signal rising edge detected
6	TSHUT_FLAG	R	Yes	No	Thermal-shutdown INT flag 0h = Normal 1h = TSHUT signal rising edge detected
5	BATOV_P_FLAG	R	Yes	No	Battery-overvoltage INT flag 0h = Normal 1h = BATOV_P signal rising edge detected
4	CFLY_FLAG	R	Yes	No	Flying capacitor fault INT flag 0h = Normal 1h = Flying capacitor fault signal rising edge detected
3	TMR_FLAG	R	Yes	No	Charger safety-timer fault INT flag 0h = Normal 1h = Charger safety-timer expired rising edge
2	CAP_COND_FLAG	R	Yes	No	Capacitor precondition fault INT flag 0h = Normal 1h = CAP_COND_STAT signal rising edge detected
1	POORSRC_FLAG	R	Yes	No	Poor-source-fault INT flag 0h = Normal 1h = POORSRC_STAT signal rising edge detected
0	RESERVED	R	Yes	No	Reserved bit always reads 0

### 7.6.1.12 INT Mask Register (Address = Bh) [reset = 00h]

REG0h is shown in [Figure 42](#) and described in [Table 16](#).

Return to [Summary Table](#).

**Figure 42. REG0h Register**

7	6	5	4	3	2	1	0
PG_MASK	INDPM_MASK	VINDPM_MASK	TREG_MASK	WD_MASK	CHRG_TERM_MASK	RESERVED	CHRG_MASK
R/W-0h	R/W-0h	R/W-0h	R/W-0h	R/W-0h	R/W-0h	R/W-0h	R/W-0h

**Table 16. REG0h Register Field Descriptions**

Bit	Field	Type	Reset by REG_RST	Reset by WATCHDOG	Description
7	PG_MASK	R/W	Yes	No	Power-good INT mask 0h = PG toggle produces INT pulse 1h = PG toggle does not produce INT pulse
6	INDPM_MASK	R/W	Yes	No	INDPM-regulation INT mask 0h = INDPM entry produces INT pulse 1h = INDPM entry does not produce INT pulse
5	VINDPM_MASK	R/W	Yes	No	VINDPM-regulation INT mask 0h = VINDPM entry produces INT pulse 1h = VINDPM entry does not produce INT pulse
4	TREG_MASK	R/W	Yes	No	Device temperature-regulation INT mask 0h = TREG entry produces INT pulse 1h = TREG entry does not produce INT pulse
3	WD_MASK	R/W	Yes	No	I <sup>2</sup> C watchdog-timer INT mask 0h = WD_STAT rising edge produces INT pulse 1h = WD_STAT rising edge does not produce INT pulse
2	CHRG_TERM_MASK	R/W	Yes	No	Charger-termination INT mask 0h = CHRG-termination detection produces INT pulse 1h = CHRG-termination detection does not produce INT pulse
1	RESERVED	R/W	Yes	No	Reserved bit always reads 0
0	CHRG_MASK	R/W	Yes	No	Charger-status INT mask 0h = CHRG_STAT[2:0] bit change produces INT pulse 1h = CHRG_STAT[2:0] bit change does not produce INT pulse

### 7.6.1.13 FAULT Mask Register (Address = Ch) [reset = 00h]

REG0C is shown in [Figure 43](#) and described in [Table 17](#).

Return to [Summary Table](#).

**Figure 43. REG0C Register**

7	6	5	4	3	2	1	0
VBUS_OVP_MASK	TSHUT_MASK	BATOV_P_MASK	CFLY_MASK	TMR_MASK	CAP_COND_MASK	POORSRC_MASK	RESERVED
R/W-0h	R/W-0h	R/W-0h	R/W-0h	R/W-0h	R/W-0h	R/W-0h	R/W-0h

**Table 17. REG0C Register Field Descriptions**

Bit	Field	Type	Reset by REG_RST	Reset by WATCHDOG	Description
7	VBUS_OVP_MASK	R/W	Yes	No	Input overvoltage INT mask 0h = VBUS_OVP rising edge produces INT pulse 1h = VBUS_OVP rising edge does not produce INT pulse
6	TSHUT_MASK	R/W	Yes	No	Thermal-shutdown INT mask 0h = TSHUT rising edge produces INT pulse 1h = TSHUT rising edge does not produce INT pulse
5	BATOV_P_MASK	R/W	Yes	No	Battery-overvoltage INT mask 0h = BATOV_P rising edge produces INT pulse 1h = BATOV_P rising edge does not produce INT pulse
4	CFLY_MASK	R/W	Yes	No	Flying capacitor fault INT mask 0h = CFLY-fault rising edge produces INT pulse 1h = CFLY-fault rising edge does not produce INT pulse
3	TMR_MASK	R/W	Yes	No	Charger safety-timer fault INT mask 0h = Timer expired rising edge produces INT pulse 1h = Timer expired rising edge does not produce INT pulse
2	CAP_COND_MASK	R/W	Yes	No	Capacitor precondition-fault INT mask 0h = CAP_COND_FLAG rising edge produces INT pulse 1h = CAP_COND_FLAG rising edge does not produce INT pulse
1	POORSRC_MASK	R/W	Yes	No	Poor-source-fault INT mask 0h = POORSRC_FLAG rising edge produces INT pulse 1h = POORSRC_FLAG rising edge does not produce INT pulse
0	RESERVED	R/W	Yes	No	Reserved bit always reads 0

### 7.6.1.14 Part Information Register (Address = Dh) [reset = 0Ah]

REG0D is shown in [Figure 44](#) and described in [Table 18](#).

Return to [Summary Table](#).

**Figure 44. REG0D Register**

7	6	5	4	3	2	1	0
REG_RST	PN[3:0]				DEV_REV[2:0]		
R/W-0h	R-1h				R-2h		

**Table 18. REG0D Register Field Descriptions**

Bit	Field	Type	Reset by REG_RST	Reset by WATCHDOG	Description
7	REG_RST	R/W	No	No	Register preset 0h = Keep the current register settings 1h = Reset to default register values and reset the safety timer NOTE: This bit resets to 0 after the register reset is complete.
6-3	PN[3:0]	R	No	No	Part number 1h = BQ25910
2-0	DEV_REV[2:0]	R	No	No	Device revision: 2h

## 8 Application and Implementation

注

Information in the following applications sections is not part of the TI component specification, and TI does not warrant its accuracy or completeness. TI's customers are responsible for determining suitability of components for their purposes. Customers should validate and test their design implementation to confirm system functionality.

### 8.1 Application Information

A typical application consists of the device configured as an I<sup>2</sup>C controlled single cell, parallel battery charger for Li-Ion and Li-polymer batteries used in a wide range of smartphones and other portable devices. It integrates an input reverse-block FET (QBLK), four switching FETs for three-level operation (QHSA – QLSA), and a bootstrap cap control to drive HS gates.

### 8.2 Typical Application

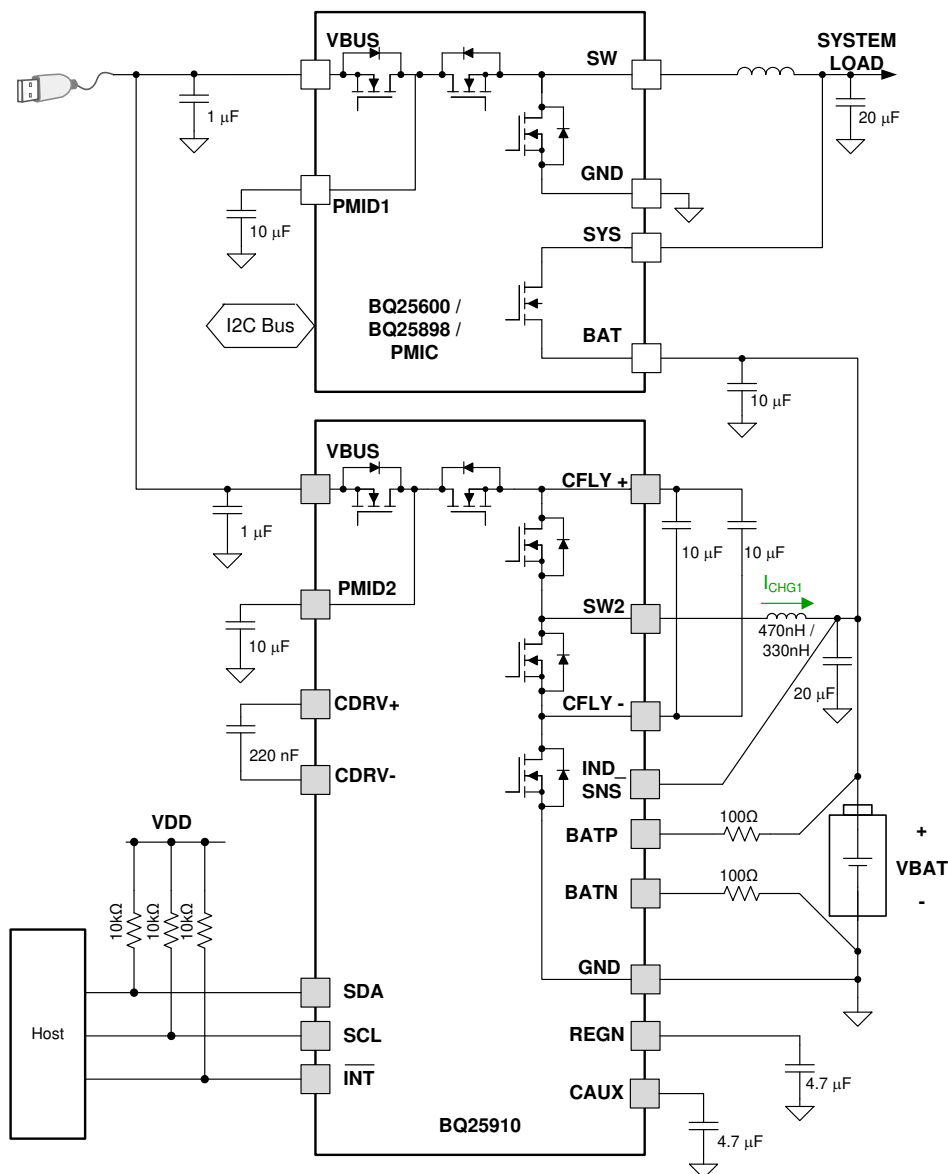


图 45. BQ25910 Application Test Configuration

## Typical Application (接下页)

### 8.2.1 Design Requirements

For this design example, use the parameters shown in 表 19.

表 19. Design Parameters

PARAMETER	VALUE
Input Voltage Range	3.9 V to 14 V
Input Current Limit	2.4 A
Fast Charge Current	3.5 A
Battery Regulation Voltage	4.35 V

### 8.2.2 Detailed Design Procedure

#### 8.2.2.1 External Passive Recommendation

The following part numbers are recommended for correct operation of BQ25910.

表 20. Recommended External Components

PASSIVE	UP TO 9VBUS ±10%	UP TO 12VBUS ±10%
Inductor	HMLQ25201B-R33	DFE252012F-R47
	MPIM252010E-R33	DFE252010F-R47
CFLY (10 μF, X5R, 16 V)	2x GRM188R61C106MAALD	
CAUX (4.7 μF, X5R, 16 V)	1x GRM155R61A475MEAAD	

#### 8.2.2.2 Inductor Selection

The BQ25910 is a three-level converter with a fixed switching frequency of 750 kHz, allowing the use of small inductor and capacitor values. The inductor saturation current should be higher than the output current ( $I_{CHG}$ ) plus half the ripple current ( $I_{RIPPLE}$ ):

$$I_{SAT} \geq I_{CHG} + \frac{I_{RIPPLE}}{2} \quad (1)$$

The inductor ripple current depends on input voltage ( $V_{BUS}$ ), duty cycle ( $D = V_{BAT}/V_{BUS}$ ), switching frequency ( $f_{sw}$ ) and inductance ( $L$ ):

$$I_{RIPPLE} = \frac{VBUS \left( 0.5 \times |D - 0.5| - (D - 0.5)^2 \right)}{L f_{sw}} \quad (2)$$

The maximum inductor ripple current happens with  $D = 1/3$  or  $D = 2/3$ . The recommended value of inductance is 330 nH for 9-V applications or 470 nH for 12-V applications (750 kHz).

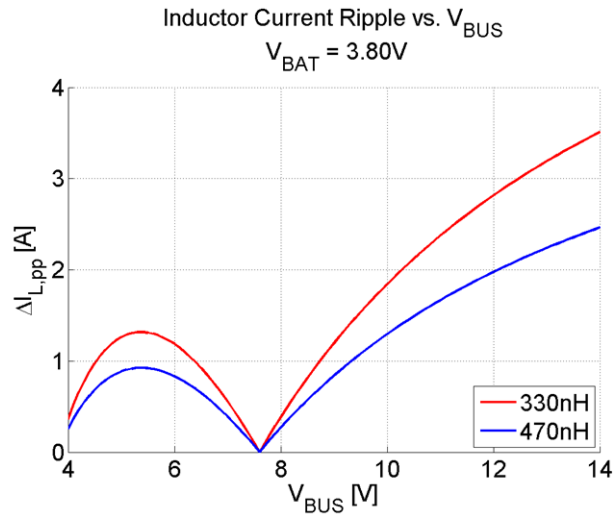


图 46. Inductor Current Ripple as function of  $V_{BUS}$  with Fixed  $V_{BAT}$

表 21. Recommended Inductor values

VBUS	INDUCTOR VALUE
3.9 V < VBUS < 10 V	330 nH
3.9 V < VBUS < 14 V	470 nH

### 8.2.2.3 Input Capacitor

Input capacitor should have enough ripple current rating to absorb input switching ripple current. The worst case RMS current occurs when duty cycle is 0.5. If the converter does not operate at 50% duty cycle, then the worst case capacitor RMS current  $I_{CIN}$  occurs where the duty cycle is closest to 50% and can be estimated by the following equation:

$$I_{CIN} = I_{CHG} \sqrt{D(1-D)} \quad (3)$$

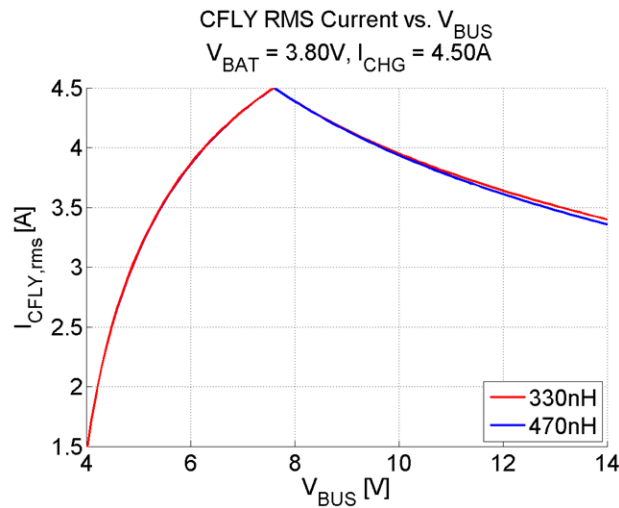
Low ESR ceramic capacitor such as X7R or X5R is preferred for input decoupling capacitor and should be placed as close as possible to PMID and GND pins. Voltage rating of the capacitor must be higher than normal input voltage level. 25-V rating or higher capacitor is preferred for 12-V input voltage. 10- $\mu$ F capacitance is suggested for up-to 6-A charging current.

### 8.2.2.4 Flying Capacitor

Flying capacitor selection must meet criteria related to current ripple and voltage ripple. Just as the input capacitor, the flying capacitor should also have enough ripple current rating to absorb the RMS current through it:

$$I_{CFLY} = \sqrt{2(0.5 - |D - 0.5|) \left( I_{CHG}^2 + \frac{I_{RIPPLE}^2}{12} \right)} \quad (4)$$

This function becomes maximum when  $D = 0.5$ , because at that point the capacitor is in series with the inductor for a complete switching cycle, and their RMS currents are the same. The flying capacitor should be sized to handle the full charge current in the scenario where  $D = 0.5$ .

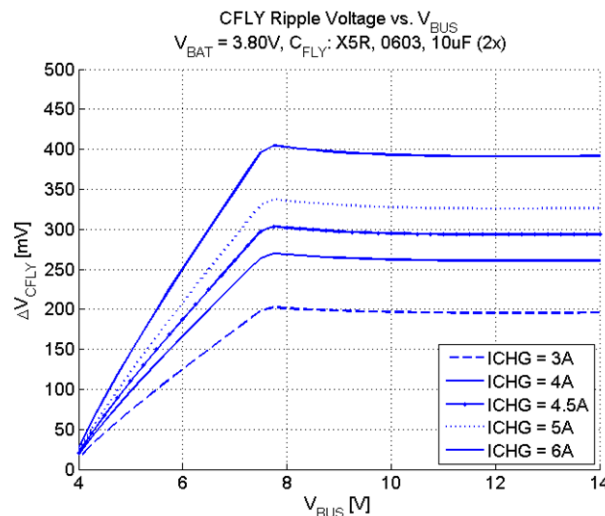


**图 47. Flying Capacitor RMS Current vs.  $V_{BUS}$  with Fixed  $V_{BAT}$  and  $I_{CHG}$**

Additionally, the flying capacitor voltage ripple should be kept under 10% of  $V_{BUS}/2$  to ensure loop stability. This quantity is given by the following equation:

$$\Delta V_{CFLY} = \frac{I_{CHG} (0.5 - |D - 0.5|)}{C_{FLY} f_{SW}} \quad (5)$$

It is recommended to use at least two 16-V, 10- $\mu$ F, low ESR ceramic capacitors in parallel to achieve both RMS current rating and maintain voltage ripple <10% in the flying capacitor for up-to 6-A charge current application. The following curve shows what the ripple voltage of CFLY might look like for such a configuration by taking into account voltage derating of the capacitor and plugging the effective capacitance value into equation above at different charge currents and  $V_{BUS}$  voltages.



**图 48. Flying Capacitor Ripple Voltage vs.  $V_{BUS}$  with Fixed  $V_{BAT}$**

**表 22. Recommended CFLY Values**

CHARGE CURRENT	CFLY CONFIGURATION
$I_{CHG} < 3.5 \text{ A}$	1 x 0603 (10 $\mu$ F, X5R, 16 V)
$I_{CHG} > 3.5 \text{ A}$	2 x 0603 (10 $\mu$ F, X5R, 16 V)

### 8.2.2.5 Output Capacitor

Output capacitor also should have enough ripple current rating to absorb output switching ripple current. The output capacitor RMS current  $I_{COUT}$  is given:

$$I_{COUT} = \frac{I_{RIPPLE}}{2\sqrt{3}} \approx 0.29 \times I_{RIPPLE} \quad (6)$$

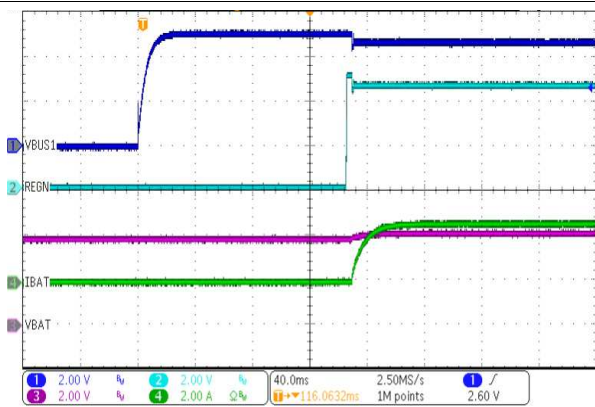
The output capacitor voltage ripple can be calculated as follows:

$$\Delta V_{SYS} = \frac{I_{RIPPLE}}{16C_O f_{SW}} \quad (7)$$

At certain input/output voltage and switching frequency, the voltage ripple can be reduced by increasing the output filter LC. The preferred ceramic capacitor is 20  $\mu$ F, 6.3 V or higher rating, X7R or X5R.

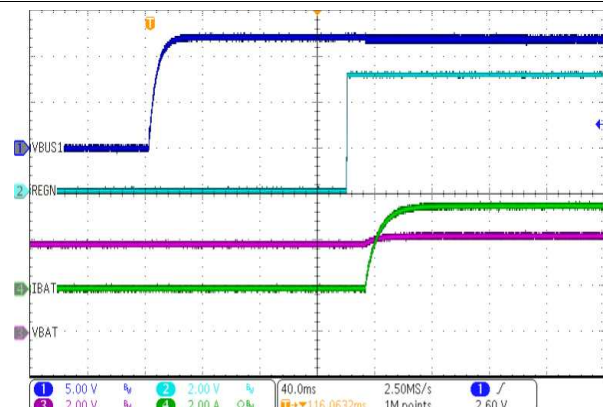
### 8.2.3 Application Curves

CBUS = 1  $\mu$ F, CPMID = 10  $\mu$ F, CBAT = 20  $\mu$ F, CFLY = 20  $\mu$ F, L = DFE252012F-R47 (470 nH) (unless otherwise noted)



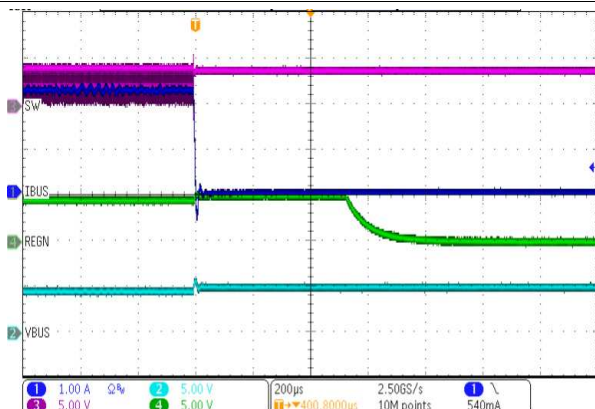
VBUS = 5 V, VBAT = 3.8 V

图 49. Adapter Power Up with Charge Enabled



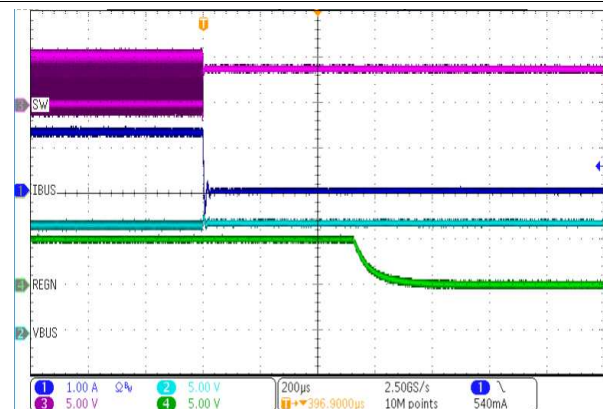
VBUS = 12 V, VBAT = 3.8 V

图 50. HV Adapter Power Up with Charge Enabled



VBUS = 5 V, VBAT = 3.5 V, ICHG = 3 A

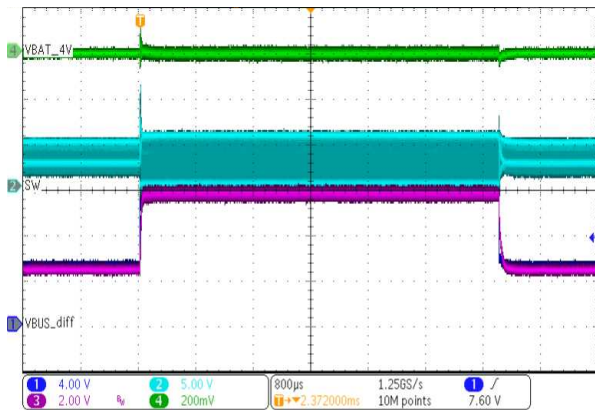
图 51. Charge Disable



VBUS = 12 V, VBAT = 3.5 V, ICHG = 4 A

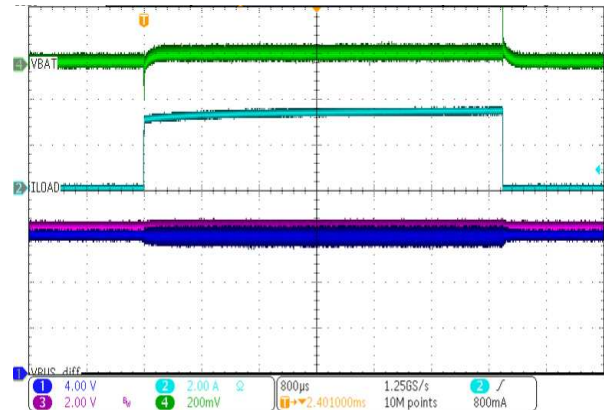
图 52. HV Adapter Charge Disable

CBUS = 1  $\mu$ F, CPMID = 10  $\mu$ F, CBAT = 20  $\mu$ F, CFLY = 20  $\mu$ F, L = DFE252012F-R47 (470 nH) (unless otherwise noted)



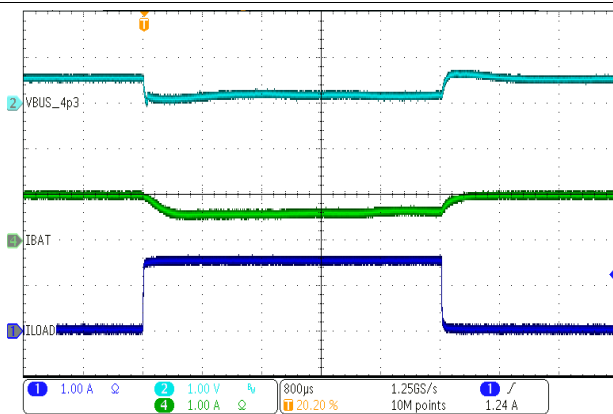
VBUS = 5 V  $\rightarrow$  12 V  $\rightarrow$  5 V, VBAT = 4 V, ICHG = 1 A  
CH 1 = VBUS, CH2 = SW, CH3 = CFLY differential, CH4 = VBAT

图 53. Line Transient Response in CC Mode



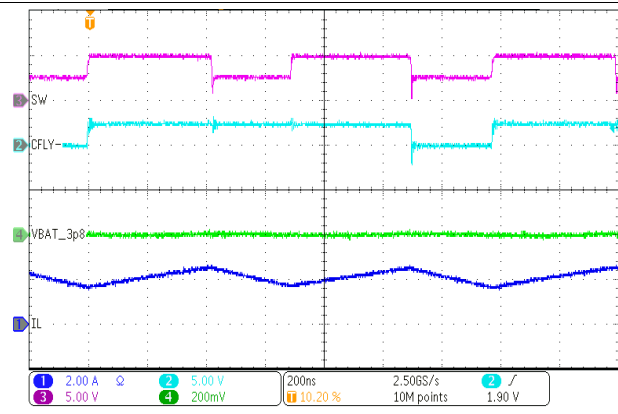
VBUS = 12 V, VBAT = 4.35 V, ICHG = 4 A, IBAT = 1 A  $\rightarrow$  4 A  $\rightarrow$  1 A  
CH 1 = VBUS, CH2 = ILOAD, CH3 = CFLY differential, CH4 = VBAT

图 54. Load Transient Response in CV Mode



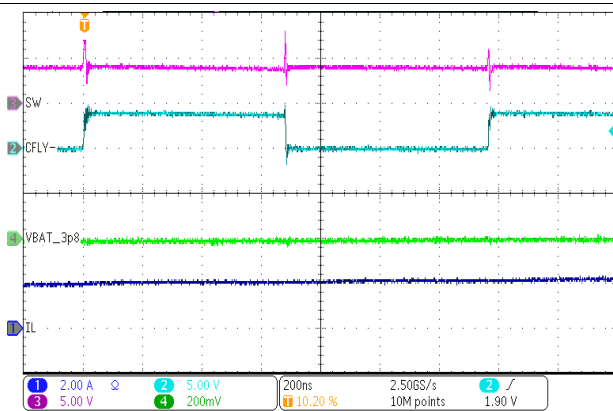
VBAT = 4.1 V, VINDPM = 4.3 V

图 55. VINDPM Response



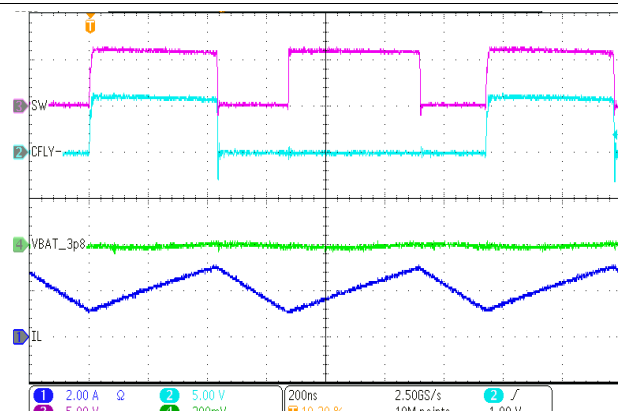
VBUS = 5 V, VBAT = 3.8 V, ICHG = 2 A, (D > 50%)

图 56. PWM Switching Waveform



VBUS = 8 V, VBAT = 3.8 V, ICHG = 2 A, (D approx. 50%)

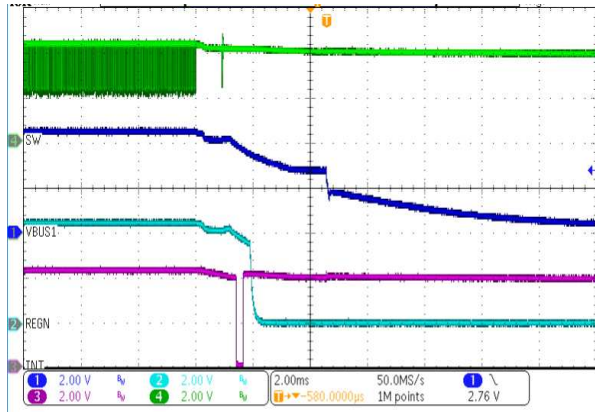
图 57. PWM Switching Waveform



VBUS = 12 V, VBAT = 3.8 V, ICHG = 2 A (D < 50%)

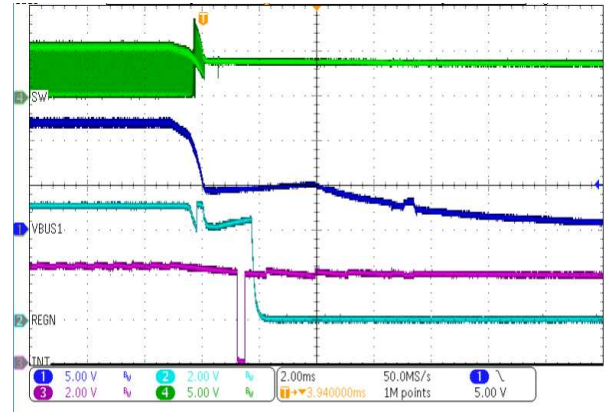
图 58. PWM Switching Waveform

CBUS = 1  $\mu$ F, CPMID = 10  $\mu$ F, CBAT = 20  $\mu$ F, CFLY = 20  $\mu$ F, L = DFE252012F-R47 (470 nH) (unless otherwise noted)



VBUS = 5 V, VBAT = 3.8 V

图 59. Adapter Removal



VBUS = 12 V, VBAT = 3.8 V

图 60. Adapter Removal

## 9 Power Supply Recommendations

In order to charge single-cell Li-Ion battery, the device requires a power supply between 3.9 V and 14 V with at least 500-mA current rating connected to VBUS. Additionally, a single-cell Li-Ion battery with voltage  $> V_{BAT\_LOWV}$  should be connected between at the output of the switched inductor, between BATP and BATN terminals.

## 10 Layout

### 10.1 Layout Guidelines

The switching node rise and fall times should be minimized for minimum switching loss. Proper layout of the components to minimize high frequency current path loops is important to prevent electrical and magnetic field radiation and high-frequency resonant problems. Here is a PCB layout priority list for proper layout. Layout PCB according to this specific order is essential.

1. Utilize at least four-layer board for optimal layout, and assign one layer as solid ground plane near the IC to minimize high-frequency current path
2. Place flying capacitor as close to CLFY+ and CLFY– bumps as possible. Minimize the copper area of this trace to lower electrical and magnetic field radiation but make the trace wide enough to carry the charging current. Do not use multiple layers in parallel for this connection.
3. Place input capacitor as close as possible to PMID bumps and PGND bumps and use solid GND plane underneath the IC. Use plenty of vias close to PMID capacitor GND terminal and IC PGND bumps to ensure low parasitic connection to GND plane.
4. Place inductor input terminal as close to SW bumps as possible. Minimize the copper area of this trace to lower electrical and magnetic field radiation but make the trace wide enough to carry the charging current.
5. Put output capacitor near to the inductor and the device. Ground connections need to be tied to the device ground with a short copper trace connection or GND plane.
6. Decoupling capacitors should be placed next to the device and make trace connection as short as possible.
7. Ensure that there are sufficient thermal vias directly under bumps of the power FETs, connecting to copper on other layers.
8. The via size and number should be enough for a given current path.
9. Route BATP and BATN away from switching nodes such as SW and CFLY+, CFLY–.

Refer to the EVM design and [图 61](#) for the recommended component placement with trace and via locations.

## 10.2 Layout Example

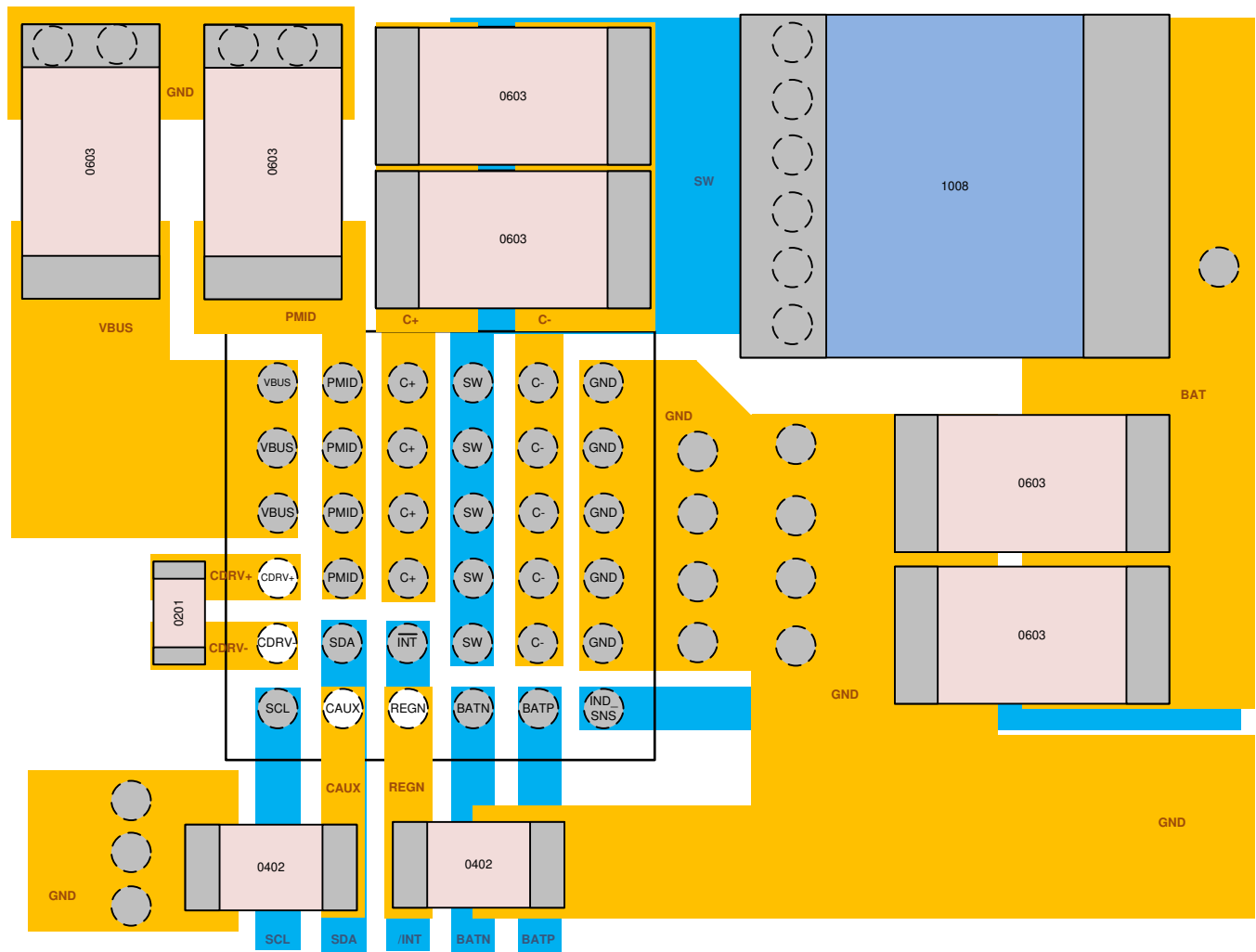


图 61. BQ25910 PCB Layout Example

## 11 器件和文档支持

### 11.1 器件支持

#### 11.1.1 第三方产品免责声明

##### 11.1.1.1 第三方产品免责声明

TI 发布的与第三方产品或服务有关的信息，不能构成与此类产品或服务或保修的适用性有关的认可，不能构成此类产品或服务单独或与任何 TI 产品或服务一起的表示或认可。

### 11.2 接收文档更新通知

要接收文档更新通知，请导航至 [ti.com](http://ti.com) 上的器件产品文件夹。单击右上角的通知我进行注册，即可每周接收产品信息更改摘要。有关更改的详细信息，请查看任何已修订文档中包含的修订历史记录。

### 11.3 社区资源

TI E2E™ [support forums](#) are an engineer's go-to source for fast, verified answers and design help — straight from the experts. Search existing answers or ask your own question to get the quick design help you need.

Linked content is provided "AS IS" by the respective contributors. They do not constitute TI specifications and do not necessarily reflect TI's views; see TI's [Terms of Use](#).

### 11.4 商标

E2E is a trademark of Texas Instruments.

All other trademarks are the property of their respective owners.

### 11.5 静电放电警告



ESD 可能会损坏该集成电路。德州仪器 (TI) 建议通过适当的预防措施处理所有集成电路。如果不遵守正确的处理措施和安装程序，可能会损坏集成电路。

ESD 的损坏小至导致微小的性能降级，大至整个器件故障。精密的集成电路可能更容易受到损坏，这是因为非常细微的参数更改都可能会导致器件与其发布的规格不相符。

### 11.6 Glossary

[SLYZ022](#) — *TI Glossary*.

This glossary lists and explains terms, acronyms, and definitions.

## 12 机械、封装和可订购信息

以下页面包含机械、封装和可订购信息。这些信息是指定器件的最新可用数据。数据如有变更，恕不另行通知，且不会对此文档进行修订。如需获取此数据表的浏览器版本，请查看左侧的导航栏。

## PACKAGING INFORMATION

Orderable part number	Status (1)	Material type (2)	Package   Pins	Package qty   Carrier	RoHS (3)	Lead finish/ Ball material (4)	MSL rating/ Peak reflow (5)	Op temp (°C)	Part marking (6)
<a href="#">BQ25910YFFR</a>	Active	Production	DSBGA (YFF)   36	3000   LARGE T&R	Yes	SNAGCU	Level-1-260C-UNLIM	-40 to 85	BQ25910
BQ25910YFFR.A	Active	Production	DSBGA (YFF)   36	3000   LARGE T&R	Yes	SNAGCU	Level-1-260C-UNLIM	-40 to 85	BQ25910
<a href="#">BQ25910YFFT</a>	Active	Production	DSBGA (YFF)   36	250   SMALL T&R	Yes	SNAGCU	Level-1-260C-UNLIM	-40 to 85	BQ25910
BQ25910YFFT.A	Active	Production	DSBGA (YFF)   36	250   SMALL T&R	Yes	SNAGCU	Level-1-260C-UNLIM	-40 to 85	BQ25910

<sup>(1)</sup> **Status:** For more details on status, see our [product life cycle](#).

<sup>(2)</sup> **Material type:** When designated, preproduction parts are prototypes/experimental devices, and are not yet approved or released for full production. Testing and final process, including without limitation quality assurance, reliability performance testing, and/or process qualification, may not yet be complete, and this item is subject to further changes or possible discontinuation. If available for ordering, purchases will be subject to an additional waiver at checkout, and are intended for early internal evaluation purposes only. These items are sold without warranties of any kind.

<sup>(3)</sup> **RoHS values:** Yes, No, RoHS Exempt. See the [TI RoHS Statement](#) for additional information and value definition.

<sup>(4)</sup> **Lead finish/Ball material:** Parts may have multiple material finish options. Finish options are separated by a vertical ruled line. Lead finish/Ball material values may wrap to two lines if the finish value exceeds the maximum column width.

<sup>(5)</sup> **MSL rating/Peak reflow:** The moisture sensitivity level ratings and peak solder (reflow) temperatures. In the event that a part has multiple moisture sensitivity ratings, only the lowest level per JEDEC standards is shown. Refer to the shipping label for the actual reflow temperature that will be used to mount the part to the printed circuit board.

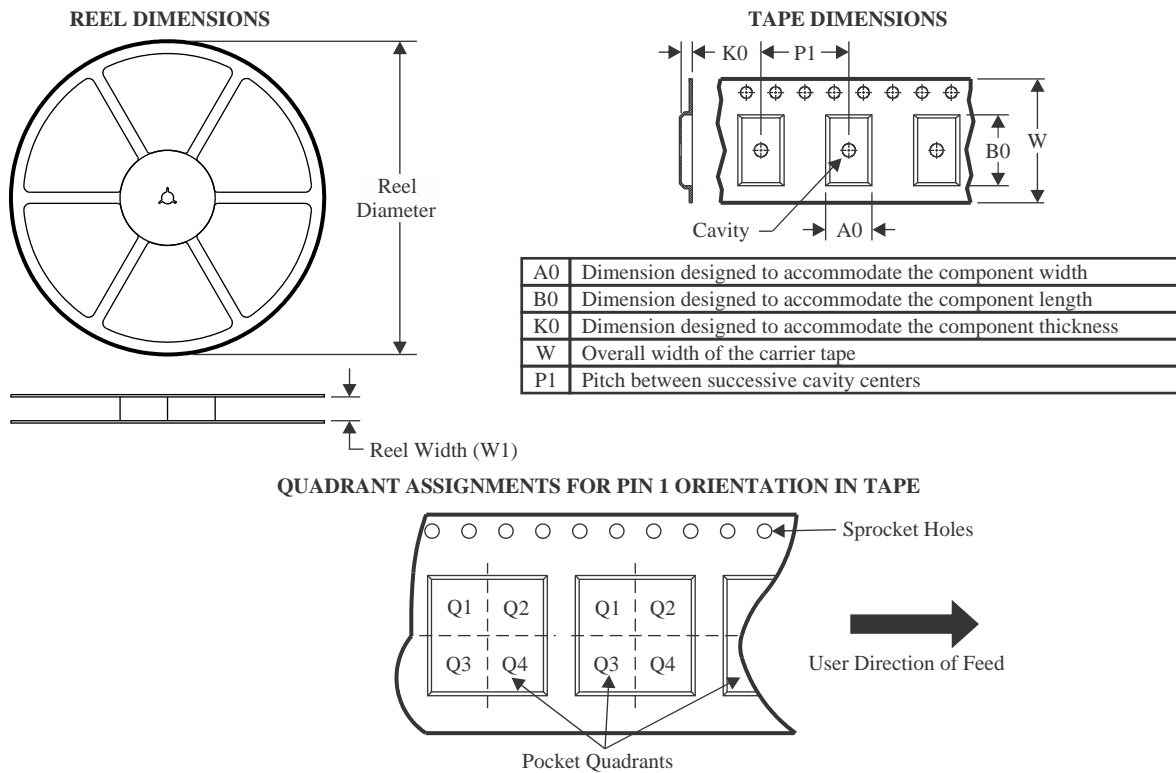
<sup>(6)</sup> **Part marking:** There may be an additional marking, which relates to the logo, the lot trace code information, or the environmental category of the part.

Multiple part markings will be inside parentheses. Only one part marking contained in parentheses and separated by a "~" will appear on a part. If a line is indented then it is a continuation of the previous line and the two combined represent the entire part marking for that device.

**Important Information and Disclaimer:** The information provided on this page represents TI's knowledge and belief as of the date that it is provided. TI bases its knowledge and belief on information provided by third parties, and makes no representation or warranty as to the accuracy of such information. Efforts are underway to better integrate information from third parties. TI has taken and continues to take reasonable steps to provide representative and accurate information but may not have conducted destructive testing or chemical analysis on incoming materials and chemicals. TI and TI suppliers consider certain information to be proprietary, and thus CAS numbers and other limited information may not be available for release.

In no event shall TI's liability arising out of such information exceed the total purchase price of the TI part(s) at issue in this document sold by TI to Customer on an annual basis.

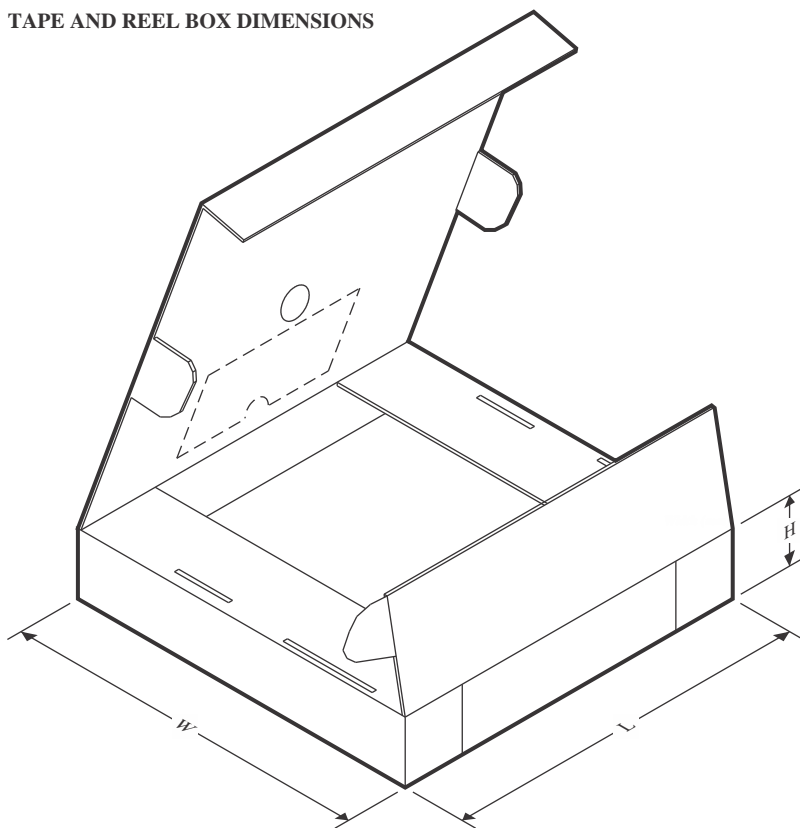
## TAPE AND REEL INFORMATION



\*All dimensions are nominal

Device	Package Type	Package Drawing	Pins	SPQ	Reel Diameter (mm)	Reel Width W1 (mm)	A0 (mm)	B0 (mm)	K0 (mm)	P1 (mm)	W (mm)	Pin1 Quadrant
BQ25910YFFR	DSBGA	YFF	36	3000	180.0	8.4	2.54	2.54	0.76	4.0	8.0	Q1
BQ25910YFFR	DSBGA	YFF	36	3000	180.0	8.4	2.54	2.54	0.76	4.0	8.0	Q1
BQ25910YFFT	DSBGA	YFF	36	250	180.0	8.4	2.54	2.54	0.76	4.0	8.0	Q1
BQ25910YFFT	DSBGA	YFF	36	250	180.0	8.4	2.54	2.54	0.76	4.0	8.0	Q1

## TAPE AND REEL BOX DIMENSIONS



\*All dimensions are nominal

Device	Package Type	Package Drawing	Pins	SPQ	Length (mm)	Width (mm)	Height (mm)
BQ25910YFFR	DSBGA	YFF	36	3000	182.0	182.0	20.0
BQ25910YFFR	DSBGA	YFF	36	3000	182.0	182.0	20.0
BQ25910YFFT	DSBGA	YFF	36	250	182.0	182.0	20.0
BQ25910YFFT	DSBGA	YFF	36	250	182.0	182.0	20.0

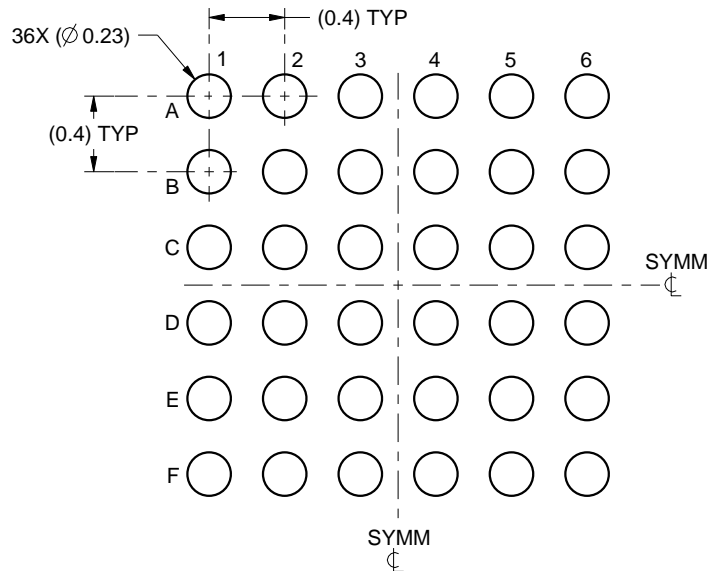


# EXAMPLE BOARD LAYOUT

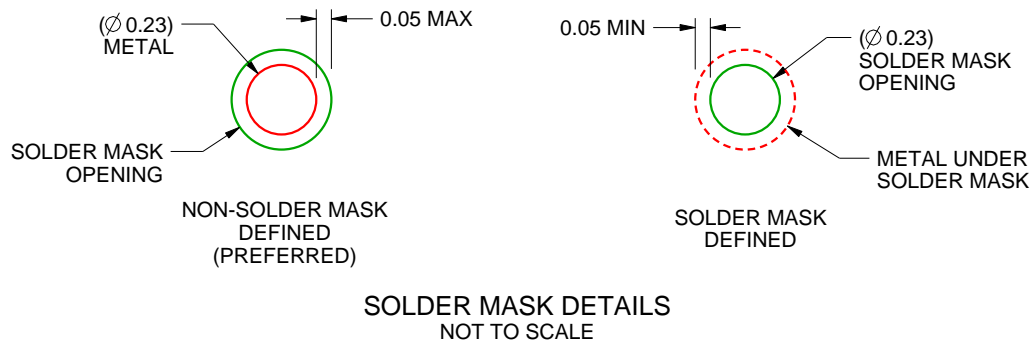
YFF0036

DSBGA - 0.625 mm max height

DIE SIZE BALL GRID ARRAY



LAND PATTERN EXAMPLE  
SCALE:25X



4222008/A 03/2015

NOTES: (continued)

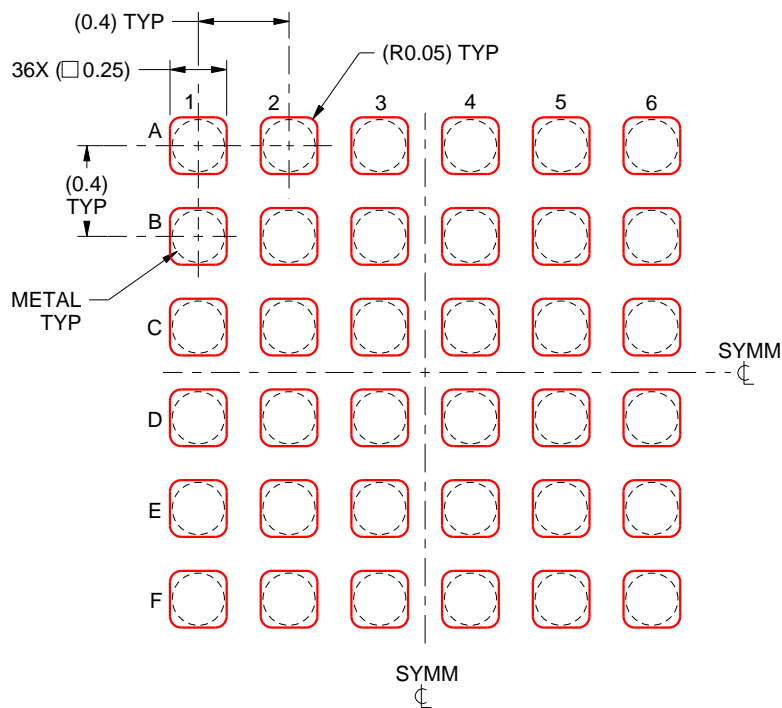
- Final dimensions may vary due to manufacturing tolerance considerations and also routing constraints. For more information, see Texas Instruments literature number SNVA009 ([www.ti.com/lit/snva009](http://www.ti.com/lit/snva009)).

# EXAMPLE STENCIL DESIGN

YFF0036

DSBGA - 0.625 mm max height

DIE SIZE BALL GRID ARRAY



SOLDER PASTE EXAMPLE  
BASED ON 0.1 mm THICK STENCIL  
SCALE:30X

4222008/A 03/2015

NOTES: (continued)

4. Laser cutting apertures with trapezoidal walls and rounded corners may offer better paste release.

## 重要通知和免责声明

TI“按原样”提供技术和可靠性数据（包括数据表）、设计资源（包括参考设计）、应用或其他设计建议、网络工具、安全信息和其他资源，不保证没有瑕疵且不做任何明示或暗示的担保，包括但不限于对适销性、与某特定用途的适用性或不侵犯任何第三方知识产权的暗示担保。

这些资源可供使用 TI 产品进行设计的熟练开发人员使用。您将自行承担以下全部责任：(1) 针对您的应用选择合适的 TI 产品，(2) 设计、验证并测试您的应用，(3) 确保您的应用满足相应标准以及任何其他安全、安保法规或其他要求。

这些资源如有变更，恕不另行通知。TI 授权您仅可将这些资源用于研发本资源所述的 TI 产品的相关应用。严禁以其他方式对这些资源进行复制或展示。您无权使用任何其他 TI 知识产权或任何第三方知识产权。对于因您对这些资源的使用而对 TI 及其代表造成的任何索赔、损害、成本、损失和债务，您将全额赔偿，TI 对此概不负责。

TI 提供的产品受 [TI 销售条款](#)、[TI 通用质量指南](#) 或 [ti.com](#) 上其他适用条款或 TI 产品随附的其他适用条款的约束。TI 提供这些资源并不会扩展或以其他方式更改 TI 针对 TI 产品发布的适用的担保或担保免责声明。除非德州仪器 (TI) 明确将某产品指定为定制产品或客户特定产品，否则其产品均为按确定价格收入目录的标准通用器件。

TI 反对并拒绝您可能提出的任何其他或不同的条款。

版权所有 © 2025，德州仪器 (TI) 公司

最后更新日期：2025 年 10 月